

DESG.	DIMENSION	TOL.	REMARK
A	7/8	±.015	SHAFT LG. FROM MTG. SURFACE
B	3/8	±.005	BUSH. LG.
C	—	±.015	FLAT LG. (IF REQ.)
D	—	±2°	FLAT ANGLE (IF REQ.)
E	—	±.002	FLAT (IF REQUIRED)
F	.531	±.010	KEY LOCATION (IF REQ.)
G	180°		KEY LOCATION (IF REQ.)
M	5/32	±.010	
N	1/8	±.093	REAR SCR. EXT.
Q	1/8	±.031	REAR SHAFT EXT.
R	3/8		1st SEC. SPACING

TMC PART NUMBER: SW-412 STAMP ON FRONT PLATE  
 FRONT PLATE SHAPE: ROUND  OR OBLONG

MECHANICAL SPECIFICATIONS:

NUMBER OF SECTIONS- 1  
 NUMBER OF POSITIONS- 7  
 ANGLE OF THROW- 30°

CONTACTS:

SHORTING TYPE, SECTIONS 1ST  
 NON SHORTING TYPE, SECTIONS —  
 SILVER PLATED BRASS, SECTIONS —  
 SILVER ALLOY, SECTIONS —

WAFERS:

BAKELITE, SECTIONS —  
 CERAMIC, SECTIONS —  
 MYCALEX, SECTIONS —  
 IMPREGNATION (IF REQ.) —

FINISH REQUIREMENTS:

ARMY — NAVY — COMMERCIAL —  
 SALT TEST (IF REQ.) —

HARDWARE, TO BE SUPPLIED BY MANUFACTURER:

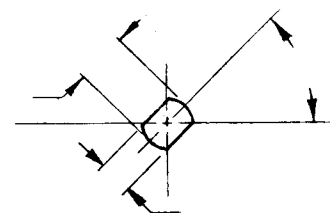
1 QUAN. 3/8 -32 NUTS 1/2 ACROSS FLATS  
 MATERIAL BRASS PLATING NICKEL  
 1 QUAN. 3/8 INTERNAL TOOTH LOCKWASHER  
 MATERIAL BRONZE PLATING NICKEL

ELECTRICAL SPECIFICATIONS:

MAXIMUM RATED VOLTAGE 110  
 MAXIMUM RATED CURRENT 1

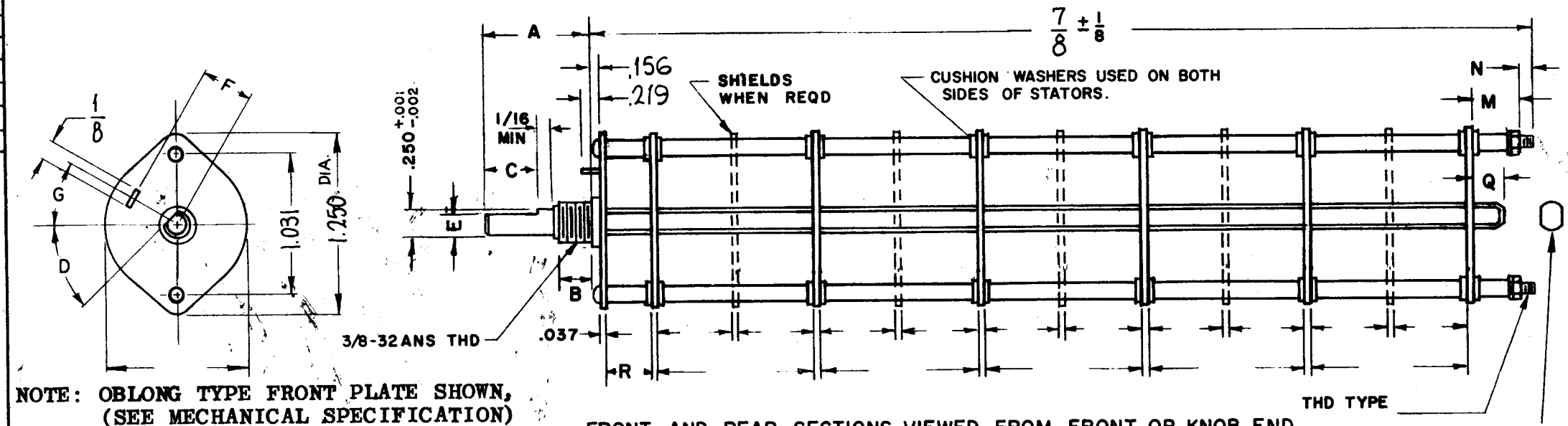
NOTE:

FOR S401-13 ("F" TYPE) SWITCHES, THE SHAFT POSITION MUST BE SPECIFIED ON DETAIL "XX" BELOW.

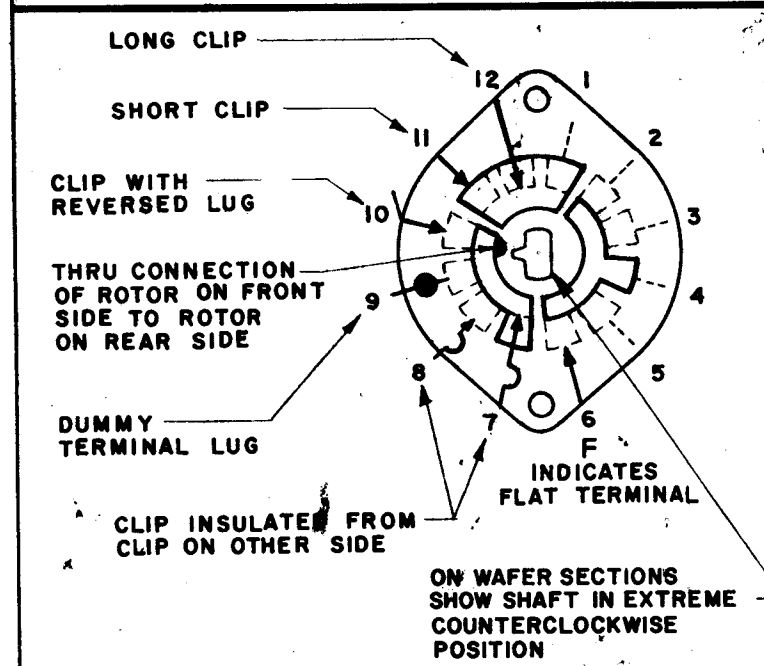


— DETAIL "XX" —

NOTES



NOTE: OBLONG TYPE FRONT PLATE SHOWN,  
 (SEE MECHANICAL SPECIFICATION)



SYMBOLS USED IN MARKING PRINT

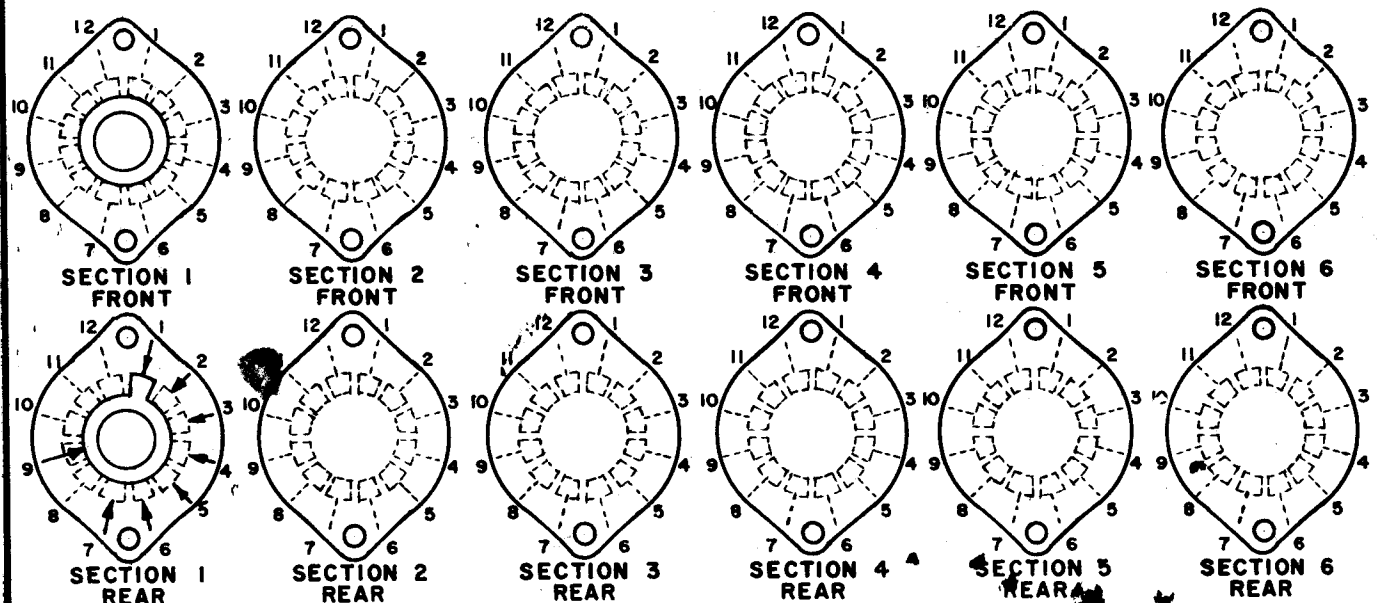
1	TSTE-10K	ASS'Y. NO.
Q'TY./UNIT	MODEL USED ON	
SCALE	CODE	
	C	

THE CONTENTS OF THIS DRAWING ARE THE EXCLUSIVE PROPERTY OF THE TECHNICAL MATERIEL CORP. ITS UNAUTHORIZED USE OR REPRODUCTION IN WHOLE OR IN PART IS STRICTLY FORBIDDEN.

REVISIONS						
BYM	DESCRIPTION	DATE	E.M.N. NO.	DRAFT	CHKD	APPD
X1	REDRAWN, REVISED	8-27-65	X1	MLY		MLY
Ø	ORIGINAL RELEASE FOR PRODUCTION	9-14-66	Ø	HCA		HCA
A	"M" DIM WAS 1/8; SIL PLATED BRASS DEL.	7-11-66	16515	LW		LW

FRONT AND REAR SECTIONS VIEWED FROM FRONT OR KNOB END OF SWITCH IN EXTREME COUNTERCLOCKWISE POSITION.

SEE NOTE (DET. "XX")



## SWITCH, ROTARY - 12 POINT TYPE

MATERIAL	THE TECHNICAL MATERIEL CORP. MAMARONECK, NEW YORK			
FINISH	TITLE SWITCH, ROTARY			
UNLESS OTHERWISE SPECIFIED DIMENSIONS ARE IN INCHES AND INCLUDE CHEMICALLY APPLIED OR PLATED FINISHES	DRAWN	DATE	FINAL APPROVAL	DATE
	CHECKED	DATE		
DECIMALS .X ± .05 .XX ± .01 .XXX ± .005	TOLERANCES	FRACTIONS ± 1/64 ANGLES ± 0° 30'	ELECT. DES.	DATE
			MECH. DES.	DATE
			SHEET	REV. LTR.