

DESG.	DIMENSION	TOL.	REMARK
A	1"	±.015	SHAFT LG. FROM MTG. SURFACE
B	3/8	±.005	BUSH. LG.
C	3/8	±.015	FLAT LG. (IF REQ.)
D	240°	±2°	FLAT ANGLE (IF REQ.)
E	7/32	±.002	FLAT ( IF REQUIRED )
F	17/32	±.010	KEY LOCATION (IF REQ.)
G	180°		KEY LOCATION (IF REQ.)
M	5/32	±.010	
N	1/8	±.093	REAR SCR. EXT.
Q	3/16	±.031	REAR SHAFT EXT.
R	3/8		1st SEC. SPACING

TMC PART NUMBER: SW- 423 STAMP ON FRONT PLATE

FRONT PLATE SHAPE: ROUND X OR OBLONG

MECHANICAL SPECIFICATIONS:

NUMBER OF SECTIONS- 1

NUMBER OF POSITIONS- 3

ANGLE OF THROW- 60

CONTACTS:

SHORTING TYPE, SECTIONS

NON SHORTING TYPE, SECTIONS ONE

SILVER PLATED BRASS, SECTIONS

SILVER ALLOY, SECTIONS ONE

WAFERS:

BAKELITE, SECTIONS ONE

CERAMIC, SECTIONS

MYCALEX, SECTIONS

IMPREGNATION (IF REQ.)

FINISH REQUIREMENTS:

ARMY NAVY COMMERCIAL

SALT TEST ( IF REQ. ) 200 Hr SALT SPRAY

HARDWARE, TO BE SUPPLIED BY MANUFACTURER:

1 QUAN. 3/8 -32 NUTS 1/2 ACROSS FLATS

MATERIAL ST. STL. PLATING PASSIVATED

1 QUAN. 3/8 INTERNAL TOOTH LOCKWASHER

MATERIAL ST. STL. PLATING PASSIVATED

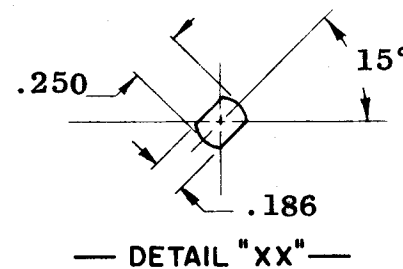
ELECTRICAL SPECIFICATIONS:

MAXIMUM RATED VOLTAGE 110 VAC

MAXIMUM RATED CURRENT .5 AMP

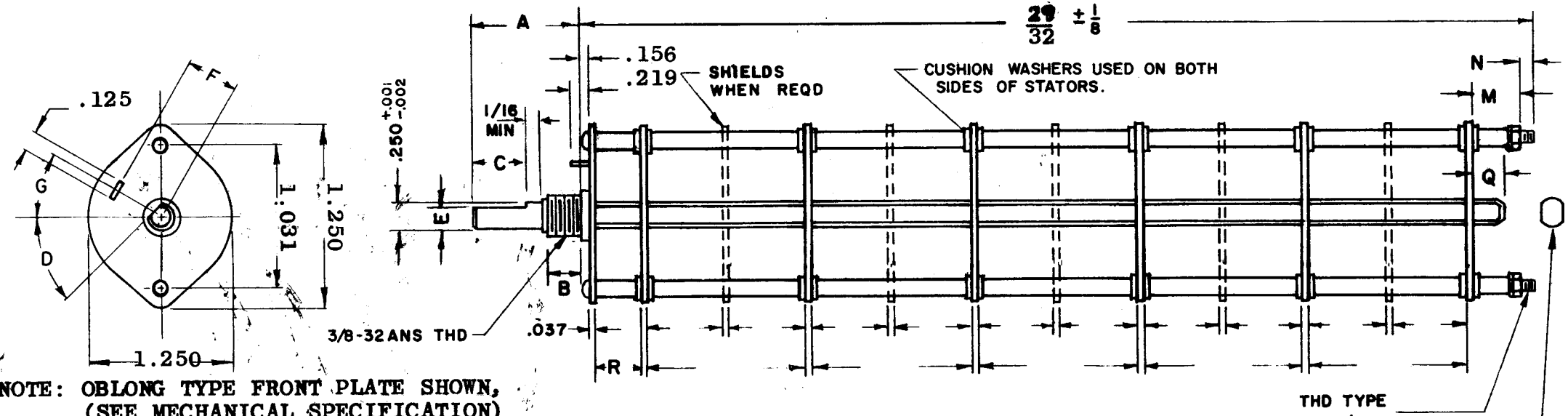
NOTE:

FOR S401-13 ("F" TYPE) SWITCHES, THE SHAFT POSITION MUST BE SPECIFIED ON DETAIL "XX" BELOW.

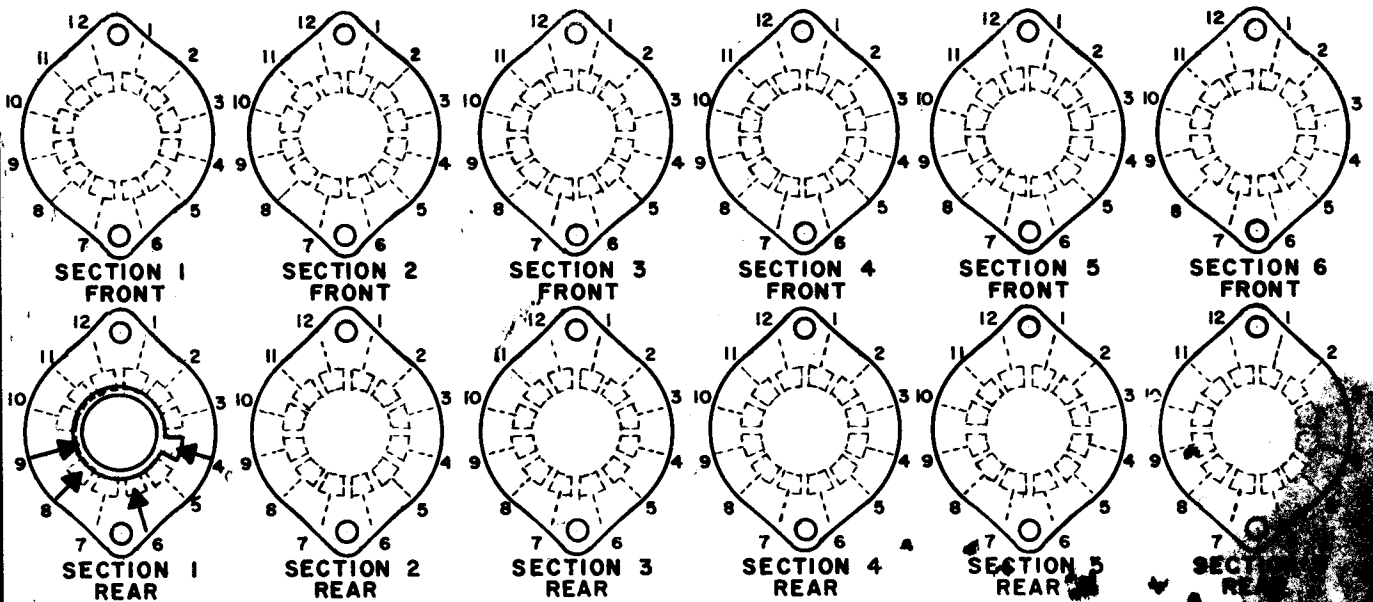
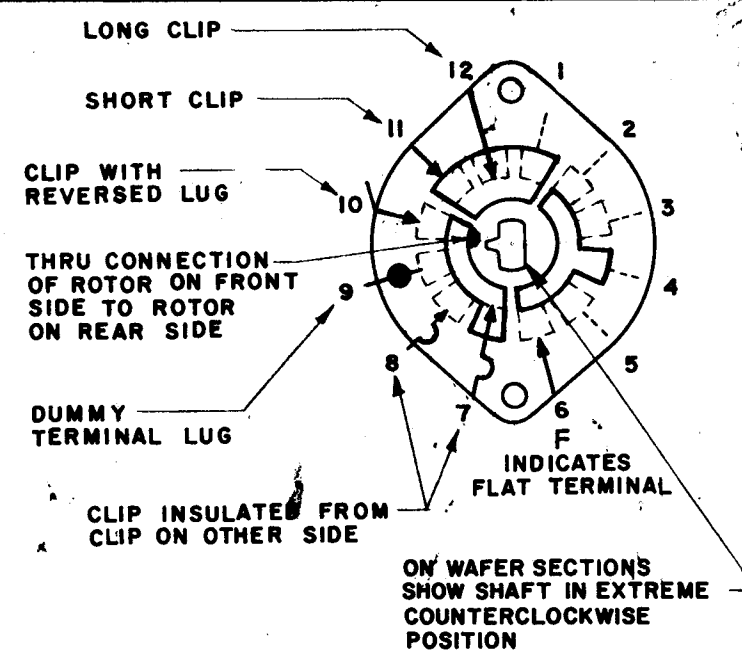


NOTES

REVISIONS						
SYM	DESCRIPTION	DATE	E.M.N. NO.	DRAFT	CHKD	APPD
X1	REVISED & DRAWN	5/27/66	X1	JC		
Ø	ORIGINAL RELEASE FOR PRODUCTION	6/2/66	Ø	CV		
A	DIM 29/32 ± 1/8 WAS 25/32 ± 1/8	10/24/66	17081	LHW		



FRONT AND REAR SECTIONS VIEWED FROM FRONT OR KNOB END \* 4/40 OF SWITCH IN EXTREME COUNTERCLOCKWISE POSITION.



SYMBOLS USED IN MARKING PRINT

TIS-3		
Q'TY./UNIT	MODEL USED ON	ASS'Y. NO.
SCALE	CODE	

THE CONTENTS OF THIS DRAWING ARE THE EXCLUSIVE PROPERTY OF THE TECHNICAL MATERIEL CORP. ITS UNAUTHORIZED USE OR REPRODUCTION IN WHOLE OR IN PART IS STRICTLY FORBIDDEN.

## SWITCH, ROTARY - 12 POINT TYPE

MATERIAL		THE TECHNICAL MATERIEL CORP. MAMARONECK, NEW YORK			
FINISH		TITLE SWITCH, ROTARY			
UNLESS OTHERWISE SPECIFIED DIMENSIONS ARE IN INCHES AND INCLUDE, CHEMICALLY APPLIED OR PLATED FINISHES		DRAWN JC	DATE 5-27-66	FINAL APPROVAL	DATE
DECIMALS .X ± .05 .XX ± .01 .XXX ± .005		CHECKED J. J. De	DATE 5-31-66	SW 423	A
FRACTIONS ± 1/64 ANGLES ± 0° 30'		ELECT. DES.	DATE		
TOLERANCES		MECH. DES.	DATE	SHEET	REV. LTR.