

DESIG.	DIMENSION	TOL.	REMARKS
A	~		Foot mount only
B	~		Foot mount only
C	2		Flange mount only
D	2-1/2		Flange mount only
E	2-3/8	1/32	Max. over clips
F	.500	1/32	From rear plate to shaft end
G	~		Total length for foot mount
H	~		Foot mount only
J	1-15/32	MAX.	
K	.734	1/32	
L	13/64	1/32	Last wafer to rear plate
M	3-5/16	MAX.	Total length (to end of rear plate)
N	~		Size 3-1 5/32 Size 5-1 9/16
P	~	MAX.	FOOT MOUNT ONLY

Switch Specifications

Mechanical

Rotation of Solenoid (viewed from solenoid end): CW CCW
 No. of sections: 3
 No. of positions: 12
 Angle of throw: 30°
 Type Mounting: Flange Foot
 Solenoid Connections: Solder lug Wire

Contacts:

Notch Homing type Sections 1
 Non-shorting, Sections 2 & 3
 Silver plated Brass
 Silver alloy

Wafer material: Phenolic Other
 Finish: Comm. 50hr. OR 100hr. salt spray
 Opr. temp.:

Wafer Type:

Electrical Specs.

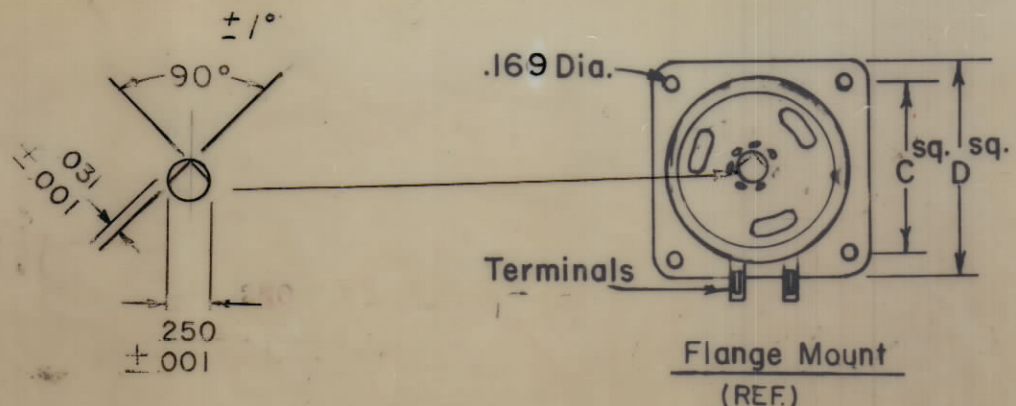
Current rating: Carry 10 amps resistive max.
 Break @ 24 volts: 5 amp resistive max.
 Break @ 115 volts: 1 amp resistive max.
 Dielectric Strength: 1000v clip to clip, 500v insulated clips back to back.

Coil Specifications

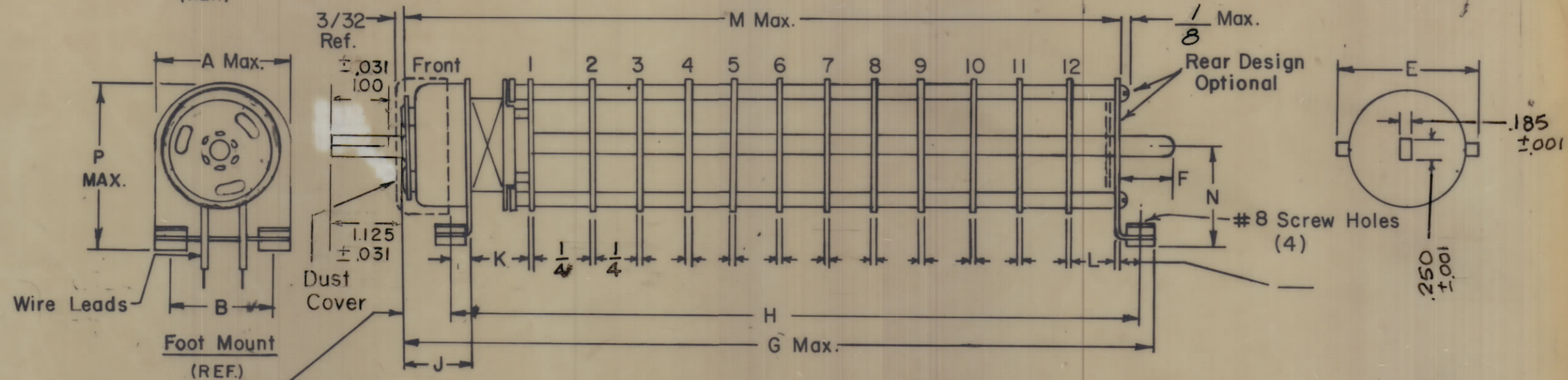
Solenoid Size: 65
 Coil Resistance @ 20° C.: 2.23~2.5%
 Voltage: 26 VDC
 Gross Starting Torque @ 20° C: 18.6 in.lbs
 Duty Cycle: 1/10
 Rotary Stroke Angle: 35°
 Electric Strength: 1200 VRMS
 Dust Cover: with w/out

NOTES:

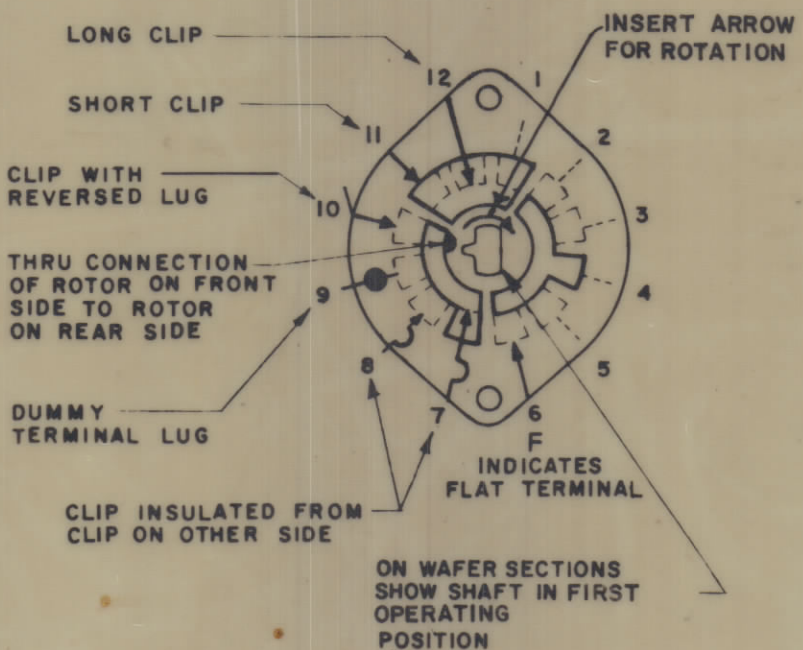
- View wafers from solenoid end of switch.
- Rear side of wafer viewed as if looking through wafers, from solenoid end.
- Orientation of wafer is with Pin 1 in the one o'clock position, as viewed from the solenoid end with solenoid connecting wires or terminals facing down.
- Rotation is in direction of arrow viewed from solenoid end.
- Wafers shown in No. 1 position.



Flange Mount (REF)

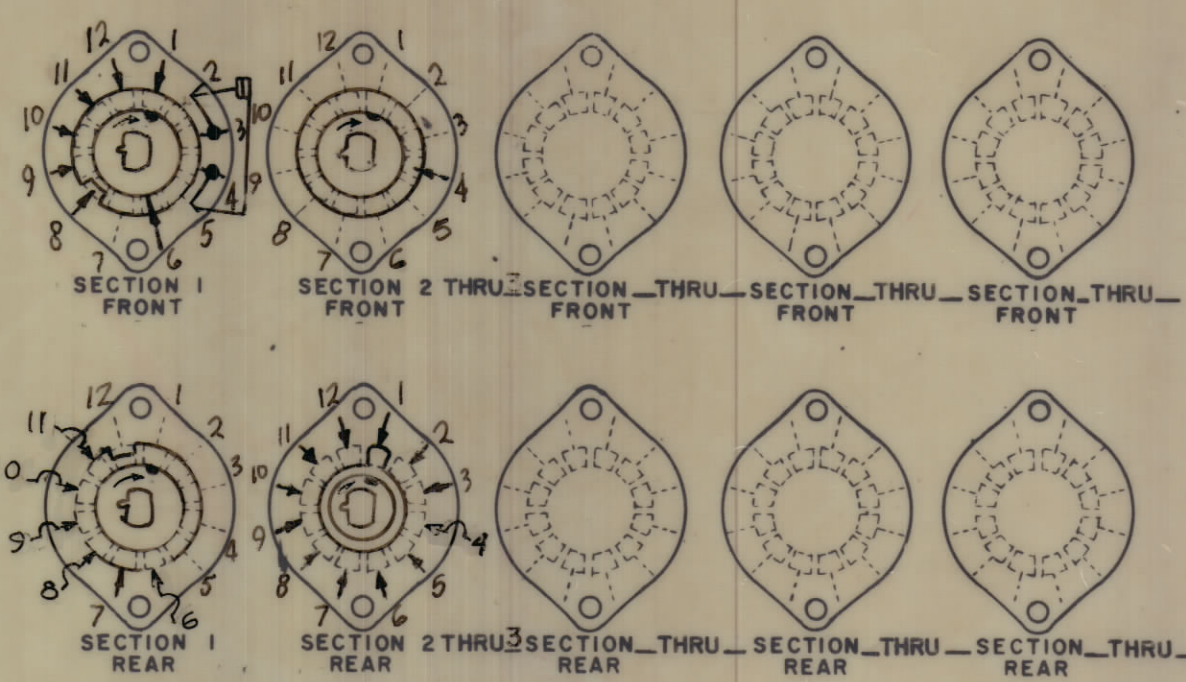


Sol. Size 3-19/32 Max.
 Sol. Size 5-15/16 Max.



SYMBOLS USED IN MARKING PRINT

REVISIONS							
ZONE	SYM	DESCRIPTION	DATE	E.M.N. NO.	DRAFT	CHKD	APPD
	X	EXP RELEASE	12-1-66				
	Ø	ORIGINAL RELEASE FOR PRODUCTION	2/28/66				
	Δ	COMPLETELY REV.	1-15-68	18713			FB
	B	REV. & UPDATED	3/20/68	18826			FB
	C	ADDED 1° ON SHAFT DIM. E 1/8.	3/19/68	19777			FB



QTY./UNIT	MODEL USED ON	ASS'Y. NO.
SCALE	CODE	5401-281 (170-859-001)

REQ'D.	ITEM	PART NUMBER	DESCRIPTION	SYMBOL
F. BUDETTI LIST OF MATERIAL				
MATERIAL		THE TECHNICAL MATERIEL CORP. MAMARONECK, NEW YORK		
FINISH		TITLE SWITCH, ROTARY, SOLENOID 12 POSITION		
UNLESS OTHERWISE SPECIFIED DIMENSIONS ARE IN INCHES AND INCLUDE CHEMICALLY APPLIED OR PLATED FINISHES		DRAWN	DATE 12-1-66	FINAL APPROVAL
DECIMALS .X ± .05 .XX ± .01 .XXX ± .005		CHECKED	DATE	DATE
FRACTIONS ± 1/64 ANGLES ± 0° 30'		ELECT. DES.	DATE	DATE
TOLERANCES		MECH. DES.	DATE	DATE
NOTES		SW429		

NOTES

THE CONTENTS OF THIS DRAWING ARE THE EXCLUSIVE PROPERTY OF THE TECHNICAL MATERIEL CORP. ITS UNAUTHORIZED USE OR REPRODUCTION IN WHOLE OR IN PART IS STRICTLY FORBIDDEN.

SW429