

DESG.	DIMENSION	TOL.	REMARK
A	.875	±.015	SHAFT LG. FROM MTG. SURFACE
B	.375	±.005	BUSH. LG.
C	NONE	±.015	FLAT LG. (IF REQ.)
D	NONE	±2°	FLAT ANGLE (IF REQ.)
E	NONE	±.002	FLAT (IF REQUIRED)
F	.531	±.010	KEY LOCATION (IF REQ.)
G	0°		KEY LOCATION (IF REQ.)
M	.125	±.010	
N	.125	±.093	REAR SCR. EXT.
Q	.187	±.031	REAR SHAFT EXT.
R	.375		1st SEC. SPACING

TMC PART NUMBER: SW-436 STAMP ON FRONT PLATE  
FRONT PLATE SHAPE: ROUND OR OBLONG X

MECHANICAL SPECIFICATIONS:  
NUMBER OF SECTIONS- 1  
NUMBER OF POSITIONS- 18, NO STOP, CONTINUOUS  
ANGLE OF THROW- 20°

CONTACTS:  
SHORTING TYPE, SECTIONS \_\_\_\_\_  
NON SHORTING TYPE, SECTIONS 1  
SILVER PLATED BRASS, SECTIONS \_\_\_\_\_  
SILVER ALLOY, SECTIONS 1

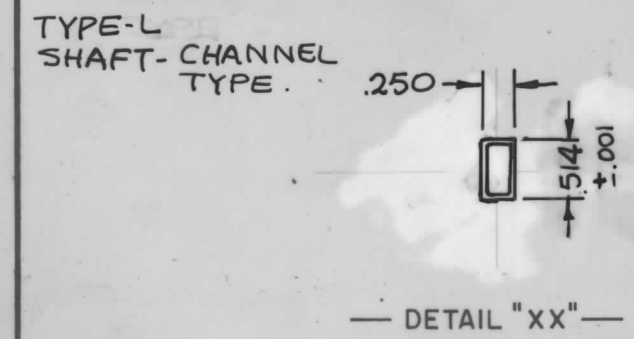
WAFERS:  
PHENOLIC SECTIONS 1  
CERAMIC, SECTIONS \_\_\_\_\_  
MYCALEX, SECTIONS \_\_\_\_\_  
IMPREGNATION (IF REQ.) \_\_\_\_\_

FINISH REQUIREMENTS:  
ARMY NAVY COMMERCIAL X  
SALT TEST (IF REQ.) \_\_\_\_\_

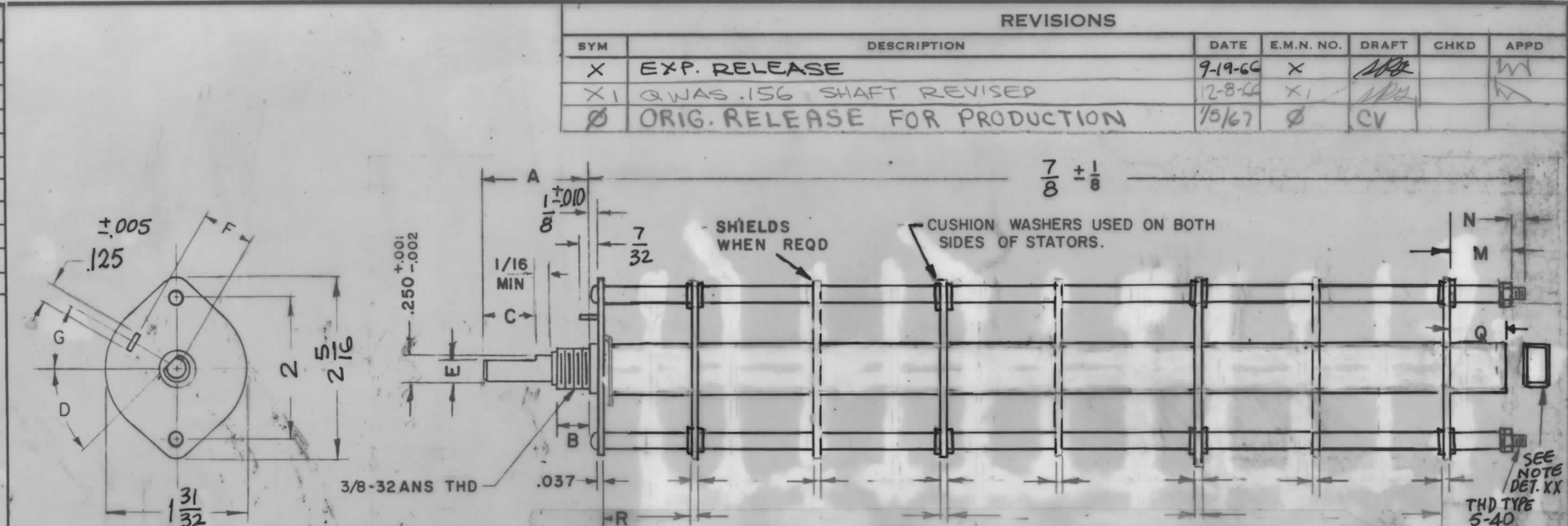
HARDWARE, TO BE SUPPLIED BY MANUFACTURER:  
1 QUAN. 3/8 -32 NUTS 1/2 ACROSS FLATS  
MATERIAL STEEL PLATING CADMIUM  
1 QUAN. 3/8 INTERNAL TOOTH LOCKWASHER  
MATERIAL STEEL PLATING CADMIUM

ELECTRICAL SPECIFICATIONS:  
MAXIMUM RATED VOLTAGE 110 VAC  
MAXIMUM RATED CURRENT .5 AMP BREAK  
5 AMP CARRY

NOTE:  
FOR S401-13 ("F" TYPE) SWITCHES, THE SHAFT POSITION MUST BE SPECIFIED ON DETAIL "XX" BELOW.

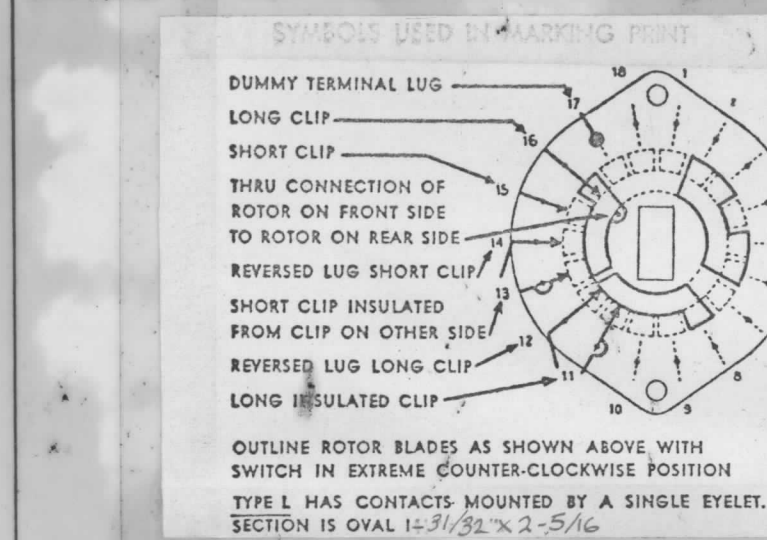


NOTES

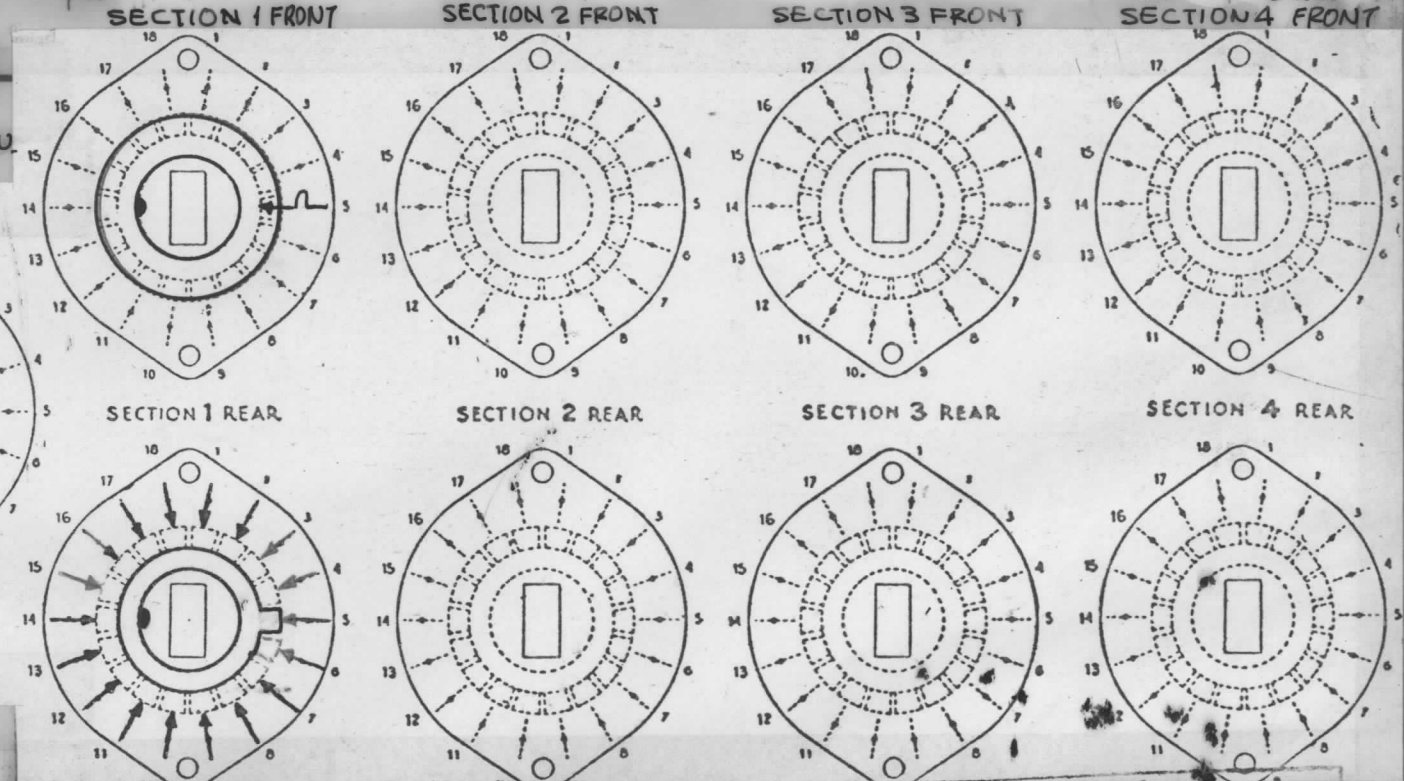


NOTE: OBLONG TYPE FRONT PLATE SHOWN, (SEE MECHANICAL SPECIFICATION)

FRONT & REAR SECTIONS VIEWED FROM FRONT OR KNOB END OF SWITCH IN EXTREME COUNTERCLOCKWISE POSITION



REVISIONS					
SYM	DESCRIPTION	DATE	E.M.N. NO.	DRAFT	CHKD APPD
X	EXP. RELEASE	9-19-66	X		
X1	QWAS .156 SHAFT REVISED	12-8-66	X1		
Ø	ORIG. RELEASE FOR PRODUCTION	1/5/67	Ø	CV	



SYMBOLS USED IN MARKING PRINT

1	AX-631	
Q'TY./UNIT	MODEL USED ON	ASS'Y. NO.
SCALE	CODE	
	C	

THE CONTENTS OF THIS DRAWING ARE THE EXCLUSIVE PROPERTY OF THE TECHNICAL MATERIEL CORP. ITS UNAUTHORIZED USE OR REPRODUCTION IN WHOLE OR IN PART IS STRICTLY FORBIDDEN.

### SWITCH, ROTARY - 18 POINT TYPE

MATERIAL	THE TECHNICAL MATERIEL CORP. F. BUDETTI MAMARONECK, NEW YORK			
FINISH	TITLE SWITCH, ROTARY			
UNLESS OTHERWISE SPECIFIED DIMENSIONS ARE IN INCHES AND INCLUDE CHEMICALLY APPLIED OR PLATED FINISHES	DRAWN	DATE	FINAL APPROVAL	
	CHECKED	DATE	DATE	
DECIMALS .X ± .05 .XX ± .01 .XXX ± .005	TOLERANCES	FRACTIONS ± 1/64 ANGLES ± 0° 30'	ELECT. DES.	DATE
			MECH. DES.	DATE
			SHEET	REV. LTR.