

DESG.	DIMENSION	TOL.	REMARK
A	$-1\frac{3}{8}$	$\pm .015$	SHAFT LG. FROM MTG. SURFACE
B	$\frac{1}{4}$	$\pm .005$	BUSH. LG.
C	—	$\pm .015$	FLAT LG. (IF REQ.)
D	—	$\pm 2^\circ$	FLAT ANGLE (IF REQ.)
E	—	$\pm .002$	FLAT (IF REQUIRED)
F	$\frac{17}{32}$	$\pm .010$	KEY LOCATION (IF REQ.)
G	180°		KEY LOCATION (IF REQ.)
M	$\frac{5}{32}$	$\pm .010$	
N	$\frac{1}{8}$	$\pm .093$	REAR SCR. EXT.
Q	$\frac{5}{16}$	$\pm .031$	REAR SHAFT EXT.
R	$.250$		1st SEC. SPACING

TMC PART NUMBER: SW-440 STAMP ON FRONT PLATE
 FRONT PLATE SHAPE: ROUND OR OBLONG

MECHANICAL SPECIFICATIONS:

NUMBER OF SECTIONS- 5
 NUMBER OF POSITIONS- CONTINUOUS
 ANGLE OF THROW- 30°

CONTACTS:

SHORTING TYPE, SECTIONS 1, 2, 3, 4, 5
 NON SHORTING TYPE, SECTIONS _____
 SILVER PLATED BRASS, SECTIONS 1, 2, 3, 4, 5
 SILVER ALLOY, SECTIONS _____

WAFERS:

BAKELITE, SECTIONS 3, 4, 5
 CERAMIC, SECTIONS _____
 MYCALEX, SECTIONS 1, 2
 IMPREGNATION (IF REQ.) _____

FINISH REQUIREMENTS:

ARMY _____ NAVY _____ COMMERCIAL
 SALT TEST (IF REQ.) _____

HARDWARE, TO BE SUPPLIED BY MANUFACTURER:

1 QUAN. $\frac{3}{8}$ -32 NUTS $\frac{1}{2}$ ACROSS FLATS
 MATERIAL STEEL PLATING CADMIUM
 1 QUAN. $\frac{3}{8}$ INTERNAL TOOTH LOCKWASHER
 MATERIAL STEEL PLATING CADMIUM

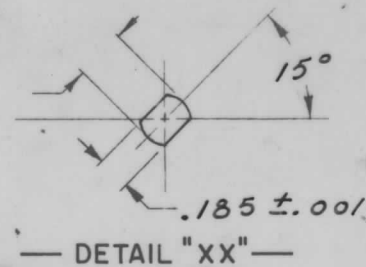
ELECTRICAL SPECIFICATIONS:

MAXIMUM RATED VOLTAGE 110 VAC
 MAXIMUM RATED CURRENT 1.0 AMP BREAK
5.0 AMP CARRY

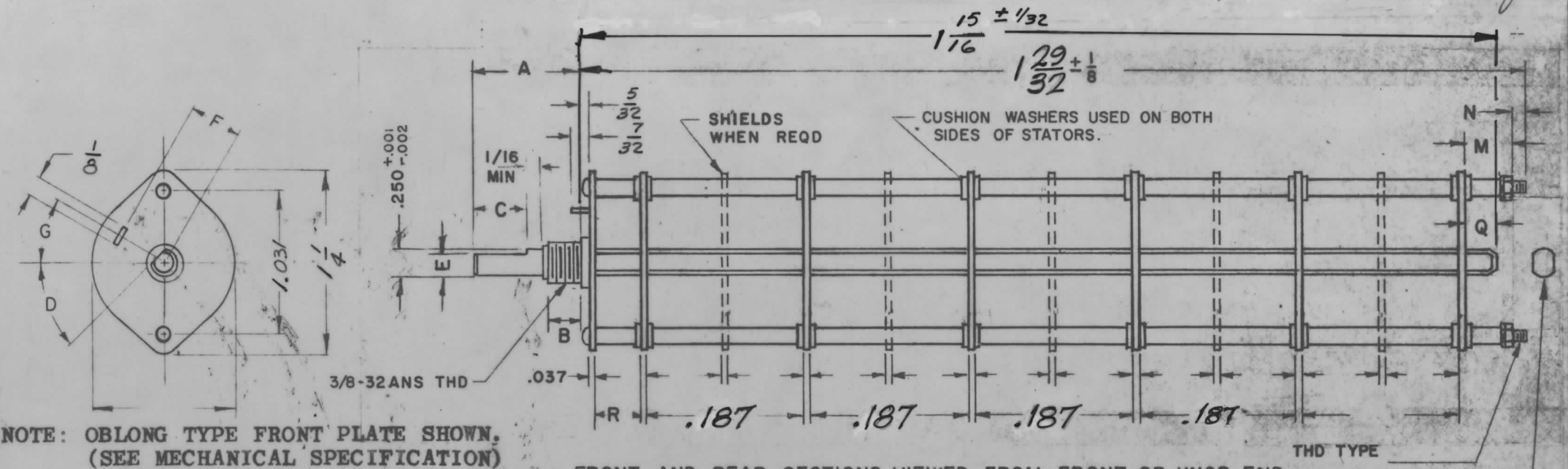
NOTE:

FOR S401-13 ("F" TYPE) SWITCHES, THE SHAFT POSITION MUST BE SPECIFIED ON DETAIL "XX" BELOW.

ALL TERMINALS FLAT



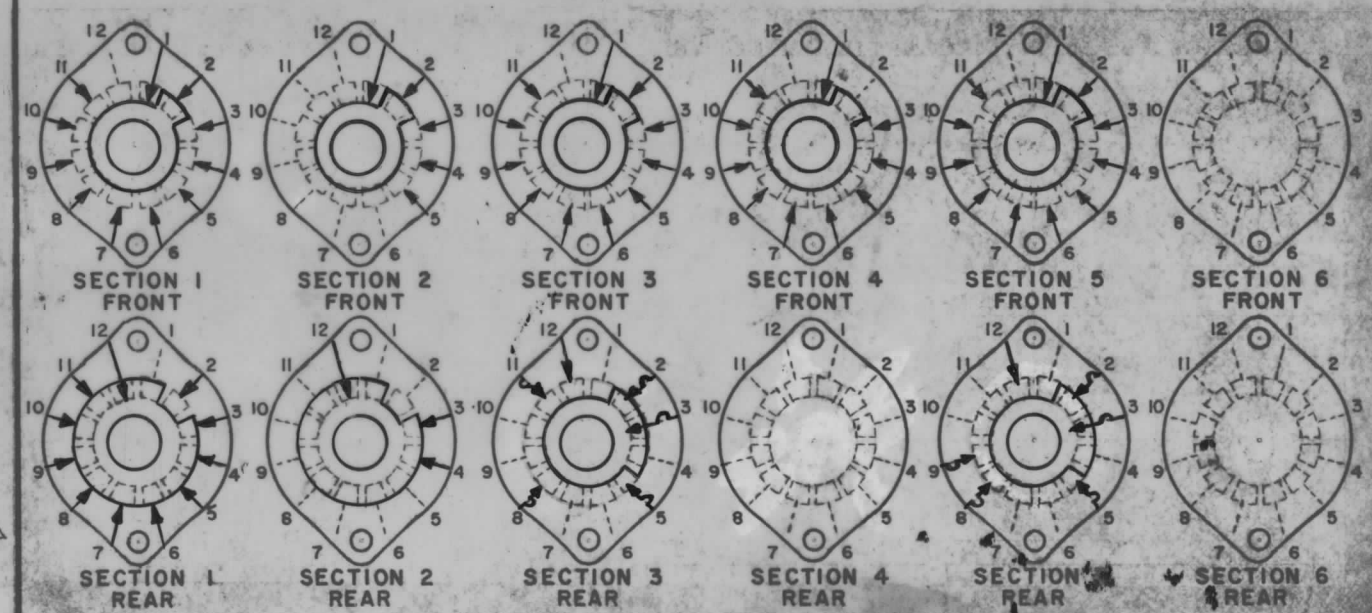
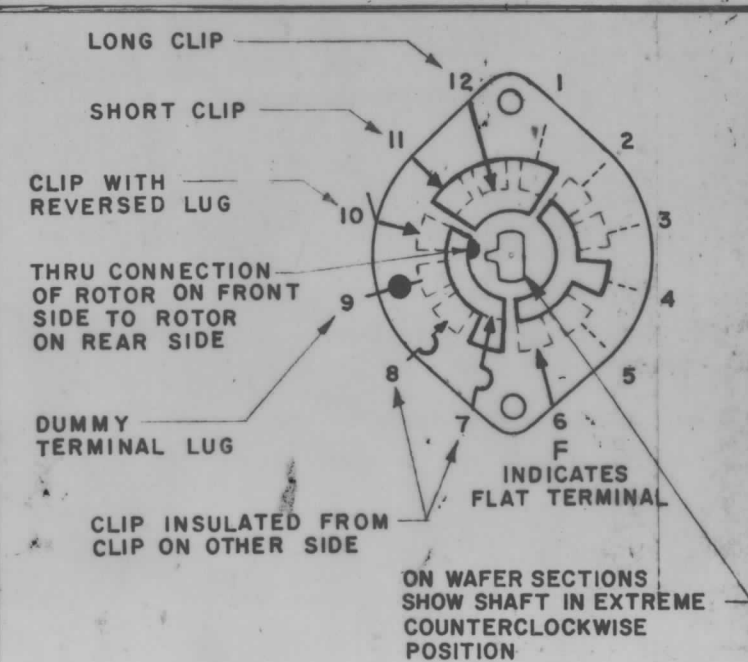
NOTES



NOTE: OBLONG TYPE FRONT PLATE SHOWN, (SEE MECHANICAL SPECIFICATION)

FRONT AND REAR SECTIONS VIEWED FROM FRONT OR KNOB END OF SWITCH IN EXTREME COUNTERCLOCKWISE POSITION.

SEE NOTE (DET. "XX")



SYMBOLS USED IN MARKING PRINT

1	MMX-1	BMAIRI
1	VOX-7	
Q'TY./UNIT	MODEL USED ON	ASS'Y. NO.
SCALE	CODE	

THE CONTENTS OF THIS DRAWING ARE THE EXCLUSIVE PROPERTY OF THE TECHNICAL MATERIEL CORP. ITS UNAUTHORIZED USE OR REPRODUCTION IN WHOLE OR IN PART IS STRICTLY FORBIDDEN.

MATERIAL		THE TECHNICAL MATERIEL CORP. MAMARONECK, NEW YORK			
FINISH		TITLE SWITCH, ROTARY 1 MHz			
UNLESS OTHERWISE SPECIFIED DIMENSIONS ARE IN INCHES AND INCLUDE CHEMICALLY APPLIED OR PLATED FINISHES		DRAWN JC	DATE 11/13/66	FINAL APPROVAL [Signature]	
DECIMALS .X ± .05 .XX ± .01 .XXX ± .005		CHECKED Jable	DATE 7/26/67	DATE 4/20/67	
FRACTIONS ± 1/64 ANGLES ± 0° 30'		ELECT. DES. X	DATE	DATE	
TOLERANCES		MECH. DES.	DATE	DATE	
		SHEET		REV. LTR.	