

DESG.	DIMENSION	TOL.	REMARK
A	1 3/8	±.015	SHAFT LG. FROM MTG. SURFACE
B	1/4	±.005	BUSH. LG.
C		±.015	FLAT LG. (IF REQ.)
D		±2°	FLAT ANGLE (IF REQ.)
E		±.002	FLAT (IF REQUIRED)
F	17/32	±.010	KEY LOCATION (IF REQ.)
G	180°		KEY LOCATION (IF REQ.)
M	5/32	±.010	
N	1/8	±.093	REAR SCR. EXT.
Q	1 1/4	±.031	REAR SHAFT EXT.
R	3/8		1st SEC. SPACING

TMC PART NUMBER: SW-443 STAMP ON FRONT PLATE
 FRONT PLATE SHAPE: ROUND OR OBLONG

MECHANICAL SPECIFICATIONS:
 NUMBER OF SECTIONS - 1
 NUMBER OF POSITIONS - CONTINUOUS
 ANGLE OF THROW - 30°

CONTACTS:
 SHORTING TYPE, SECTIONS 1
 NON SHORTING TYPE, SECTIONS
 SILVER PLATED BRASS; SECTIONS 1
 SILVER ALLOY, SECTIONS

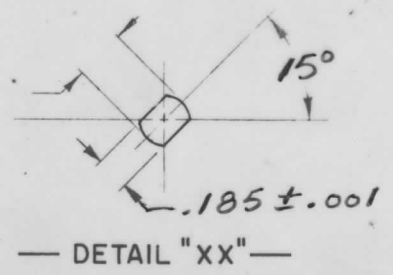
WAFERS:
 BAKELITE, SECTIONS
 CERAMIC, SECTIONS
 MYCALEX, SECTIONS 1
 IMPREGNATION (IF REQ.)

FINISH REQUIREMENTS:
 ARMY NAVY COMMERCIAL
 SALT TEST (IF REQ.)

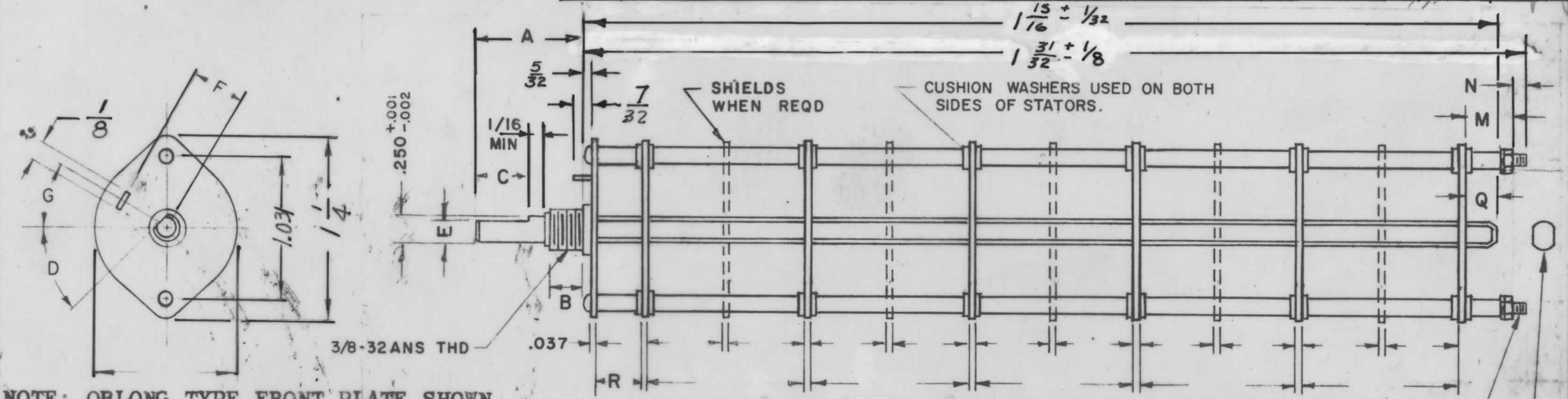
HARDWARE, TO BE SUPPLIED BY MANUFACTURER:
 1 QUAN. 3/8 -32 NUTS 1/2 ACROSS FLATS
 MATERIAL STEEL PLATING CADMIUM
 1 QUAN. 3/8 INTERNAL TOOTH LOCKWASHER
 MATERIAL STEEL PLATING CADMIUM

ELECTRICAL SPECIFICATIONS:
 MAXIMUM RATED VOLTAGE 110 VAC
 MAXIMUM RATED CURRENT 1.0 AMP BREAK
 5.0 AMP CARRY

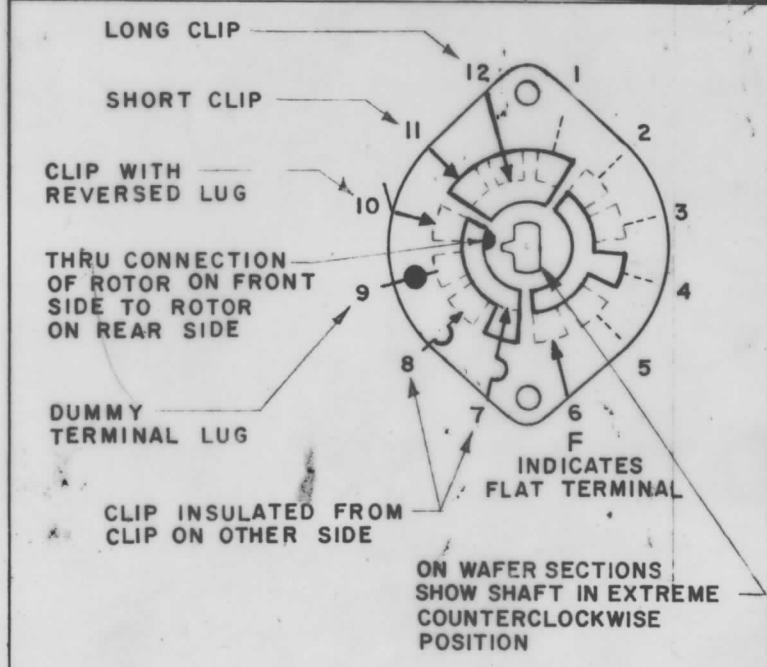
NOTE:
 FOR S401-13 ("F" TYPE) SWITCHES, THE SHAFT POSITION MUST BE SPECIFIED ON DETAIL "XX" BELOW.



NOTES



NOTE: OBLONG TYPE FRONT PLATE SHOWN, (SEE MECHANICAL SPECIFICATION)



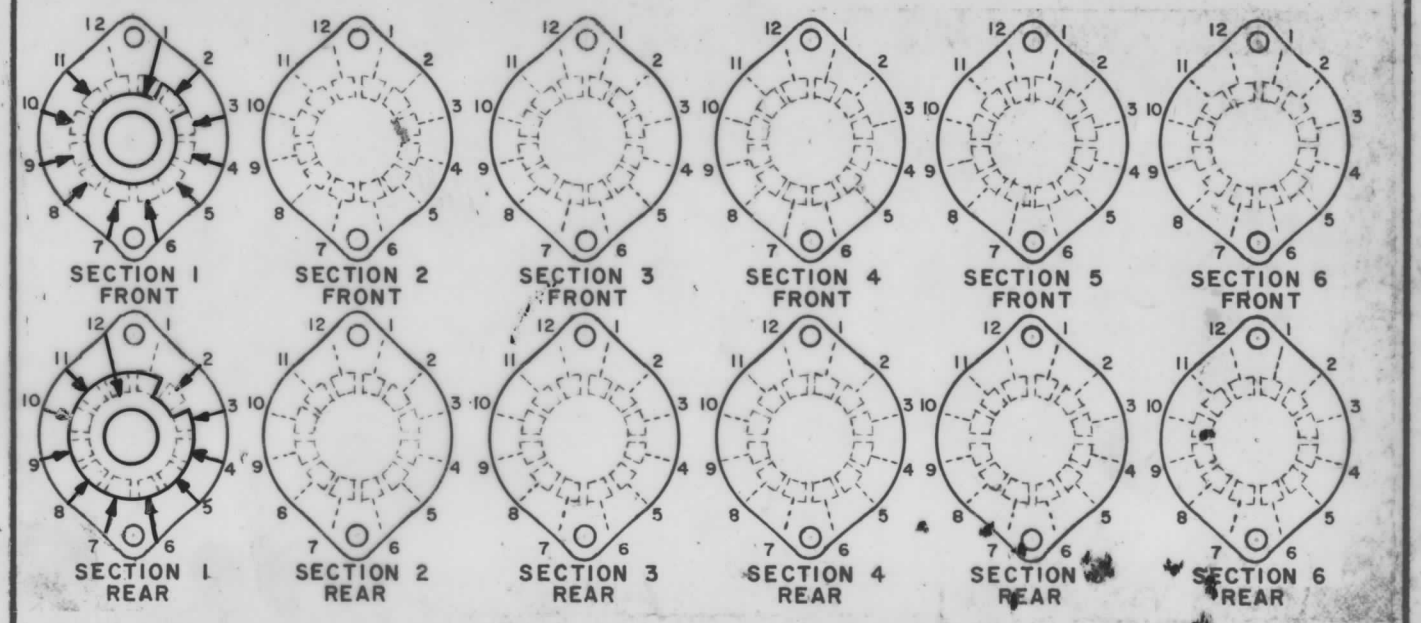
SYMBOLS USED IN MARKING PRINT

2	MMX-()	BMA101
4	VOX-7	BMA111
QTY./UNIT	MODEL USED ON	ASS'Y. NO.
SCALE	CODE	

THE CONTENTS OF THIS DRAWING ARE THE EXCLUSIVE PROPERTY OF THE TECHNICAL MATERIEL CORP. ITS UNAUTHORIZED USE OR REPRODUCTION IN WHOLE OR IN PART IS STRICTLY FORBIDDEN.

REVISIONS						
SYM	DESCRIPTION	DATE	E.M.N. NO.	DRAFT	CHKD	APPD
X	EXP. RELEASE	11/3/66		JL		JL
Ø	ORIGINAL RELEASE FOR PRODUCTION	5-3-67		GDL		JL
A	DELE. MOD. NO. HFSR-4 MOD. MMX-() WAS MMX-1	10/25/67	C.C.	Griff		JL

FRONT AND REAR SECTIONS VIEWED FROM FRONT OR KNOB END OF SWITCH IN EXTREME COUNTERCLOCKWISE POSITION. SEE NOTE (DET. "XX")



SWITCH, ROTARY - 12 POINT TYPE "F"

MATERIAL		THE TECHNICAL MATERIEL CORP. MAMARONECK, NEW YORK			
FINISH		TITLE SWITCH, ROTARY 10Hz, 100 Hz, 1kHz, 10kHz			
UNLESS OTHERWISE SPECIFIED DIMENSIONS ARE IN INCHES AND INCLUDE CHEMICALLY APPLIED OR PLATED FINISHES		DRAWN JL	DATE 11/9/66	FINAL APPROVAL [Signature]	
DECIMALS .X ± .05 .XX ± .01 .XXX ± .005		CHECKED [Signature]	DATE 4/26/67	DATE 4/26/67	
FRACTIONS ± 1/64 ANGLES ± 0° 30'		ELECT. DES.	DATE	SHEET SW443 A	
TOLERANCES		MECH. DES.	DATE	REV. LTR.	