

DESG.	DIMENSION	TOL.	REMARK
A	3/4	±.015	SHAFT LG. FROM MTG. SURFACE
B	1/4	±.005	BUSH. LG.
C	—	±.015	FLAT LG. (IF REQ.)
D	—	±2°	FLAT ANGLE (IF REQ.)
E	—	±.002	FLAT (IF REQUIRED)
F	17/32	±.010	KEY LOCATION (IF REQ.)
G	180°		KEY LOCATION (IF REQ.)
M	5/32	±.010	
N	1/8	±.093	REAR SCR. EXT.
Q	3/16	±.031	REAR SHAFT EXT.
R	9/32		1st SEC. SPACING

TMC PART NUMBER: SW-447 STAMP ON FRONT PLATE
 FRONT PLATE SHAPE: ROUND OR OBLONG

MECHANICAL SPECIFICATIONS:

NUMBER OF SECTIONS- 1
 NUMBER OF POSITIONS- 4
 ANGLE OF THROW- 30°

CONTACTS:

SHORTING TYPE, SECTIONS _____
 NON SHORTING TYPE, SECTIONS _____
 SILVER PLATED BRASS, SECTIONS _____
 SILVER ALLOY, SECTIONS _____

WAFERS:

BAKELITE, SECTIONS _____
 CERAMIC, SECTIONS _____
 MYCALEX, SECTIONS _____
 IMPREGNATION (IF REQ.) _____

FINISH REQUIREMENTS:

ARMY _____ NAVY _____ COMMERCIAL
 SALT TEST (IF REQ.) _____

HARDWARE, TO BE SUPPLIED BY MANUFACTURER:

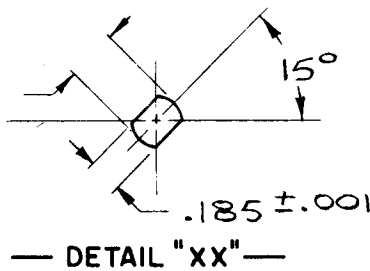
1 QUAN. 3/8 -32 NUTS 1/2 ACROSS FLATS
 MATERIAL STEEL PLATING CADMIUM
 1 QUAN. 3/8 INTERNAL TOOTH LOCKWASHER
 MATERIAL STEEL PLATING CADMIUM

ELECTRICAL SPECIFICATIONS:

MAXIMUM RATED VOLTAGE 110 V AC
 MAXIMUM RATED CURRENT 1.0 AMP BREAK
 5.0 AMP CARRY

NOTE:

FOR S401-13 ("F" TYPE) SWITCHES, THE SHAFT POSITION MUST BE SPECIFIED ON DETAIL "XX" BELOW.

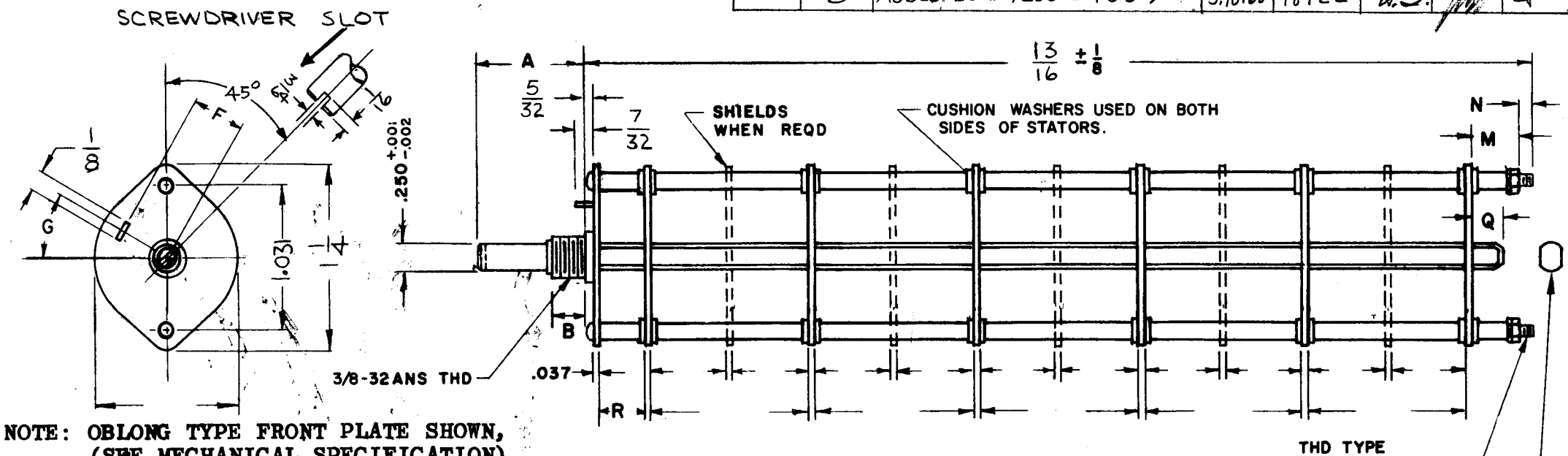


NOTES

1	MMX-1	BMA 104
QTY / UNIT	MODEL USED ON	ASS'Y NO.
APPLICATION		
S401-13	CODE C	

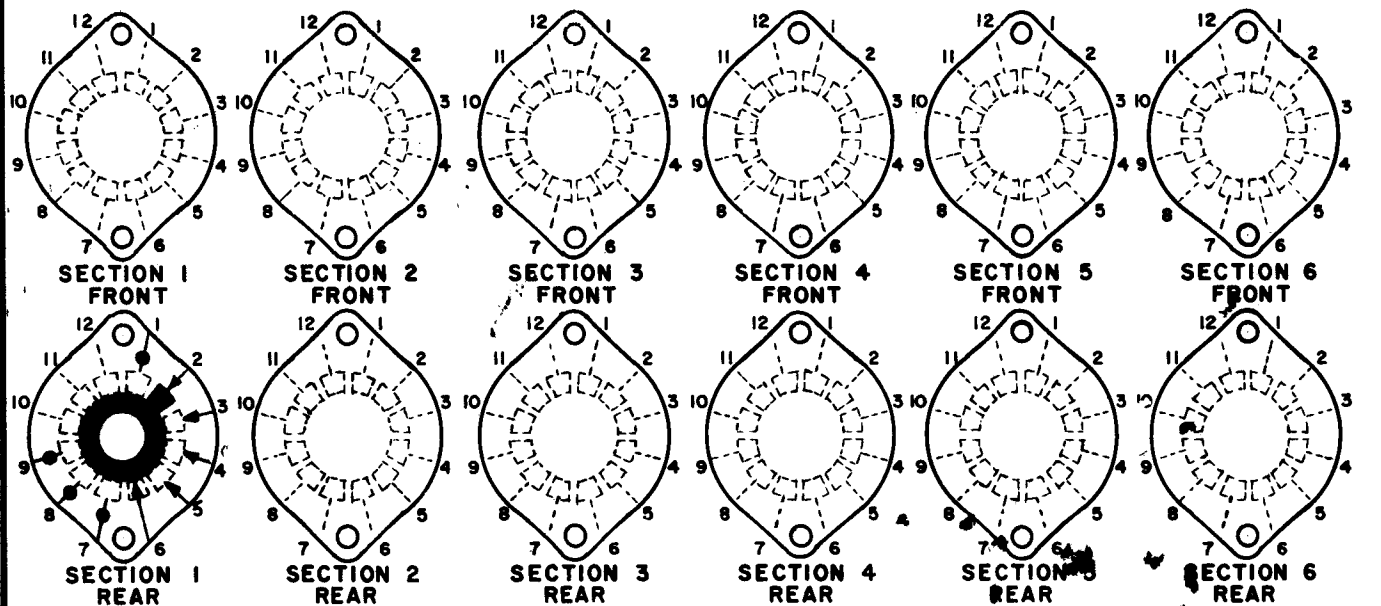
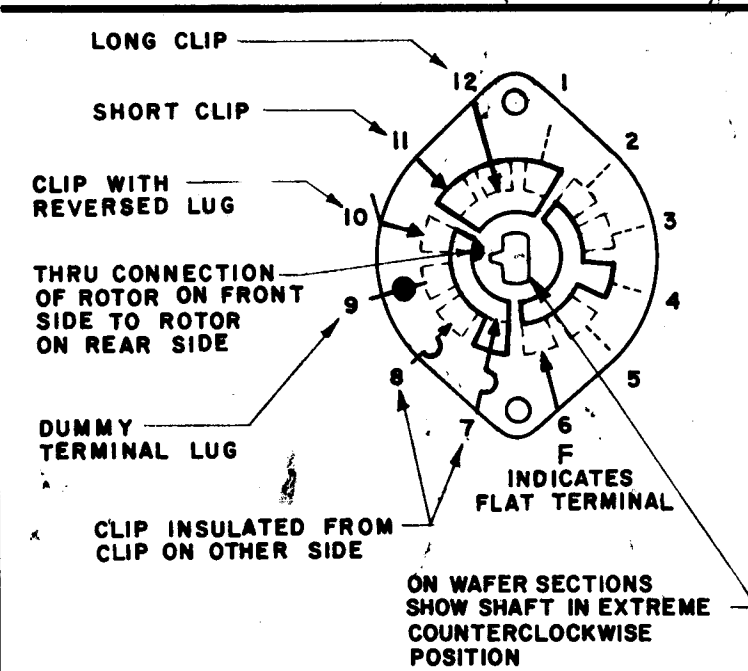
NOTICE TO PERSONS RECEIVING THIS DRAWING
 THE TECHNICAL MATERIEL CORPORATION claims proprietary right in the material disclosed hereon. This drawing is issued in confidence for engineering information only and may not be reproduced or used to manufacture anything shown hereon without permission from THE TECHNICAL MATERIEL CORPORATION to the user. This drawing is loaned for mutual assistance and is subject to recall at any time.

REVISIONS						
ZONE	LTR	DESCRIPTION	DATE	E.M.N.NO	DRAFT	CHKD APPD
	A	VENDOR No. WAS -451	6.8.67	—	WFD	OP
	B	ADDED DUMMY LUG TO PO'S 9	5.10.68	18922	H.S.	OP



NOTE: OBLONG TYPE FRONT PLATE SHOWN, (SEE MECHANICAL SPECIFICATION)

FRONT AND REAR SECTIONS VIEWED FROM FRONT OR KNOB END OF SWITCH IN EXTREME COUNTERCLOCKWISE POSITION.



SWITCH, ROTARY - 12 POINT TYPE

UNLESS OTHERWISE SPECIFIED DIMENSIONS ARE IN INCHES AND INCLUDE CHEMICALLY APPLIED OR PLATED FINISHES		FINAL APPROV. <i>[Signature]</i>	DATE 5/10/67	THE TECHNICAL MATERIEL CORP.	
DECIMALS .X ± .05 .XX ± .01 .XXX ± .005		MECH. DES. <i>[Signature]</i>	DATE 5/9/67	MAMARONECK, NEW YORK	
FRACTIONS 1/64		ELECT. DES. <i>[Signature]</i>	DATE 5/9/67	SWITCH, ROTARY	
TOLS. ANGLES 0°-30'		CHECKED <i>[Signature]</i>	DATE	FREQ. SHIFT	
MATERIAL		DRAWN RME	DATE 1.16.67	SIZE B	CODE IDENT. NO. 82679
FINISH		<i>[Signature]</i> 5/10/67		DWG NO. SW 447	ISSUE B
				SCALE	SHEET OF