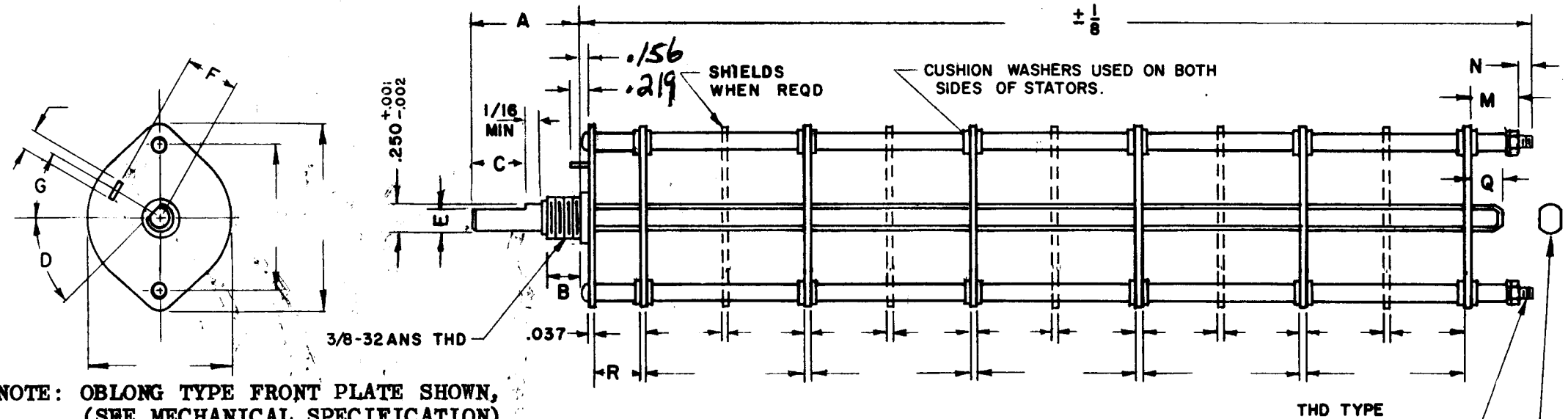


DESG.	DIMENSION	TOL.	REMARK
A	3/4	±.015	SHAFT LG. FROM MTG. SURFACE
B	3/8	±.005	BUSH. LG.
C	+	±.015	FLAT LG. (IF REQ.)
D	+	±2°	FLAT ANGLE (IF REQ.)
E	+	±.002	FLAT (IF REQUIRED)
F	.531	±.010	KEY LOCATION (IF REQ.)
G	180°		KEY LOCATION (IF REQ.)
M	.125	±.010	
N	1/8	±.093	REAR SCR. EXT.
Q	3/16	±.031	REAR SHAFT EXT.
R	.375		1st SEC. SPACING

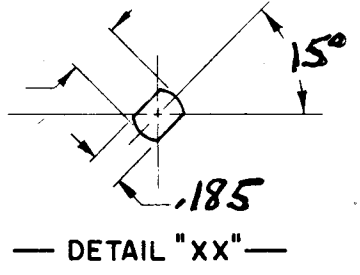
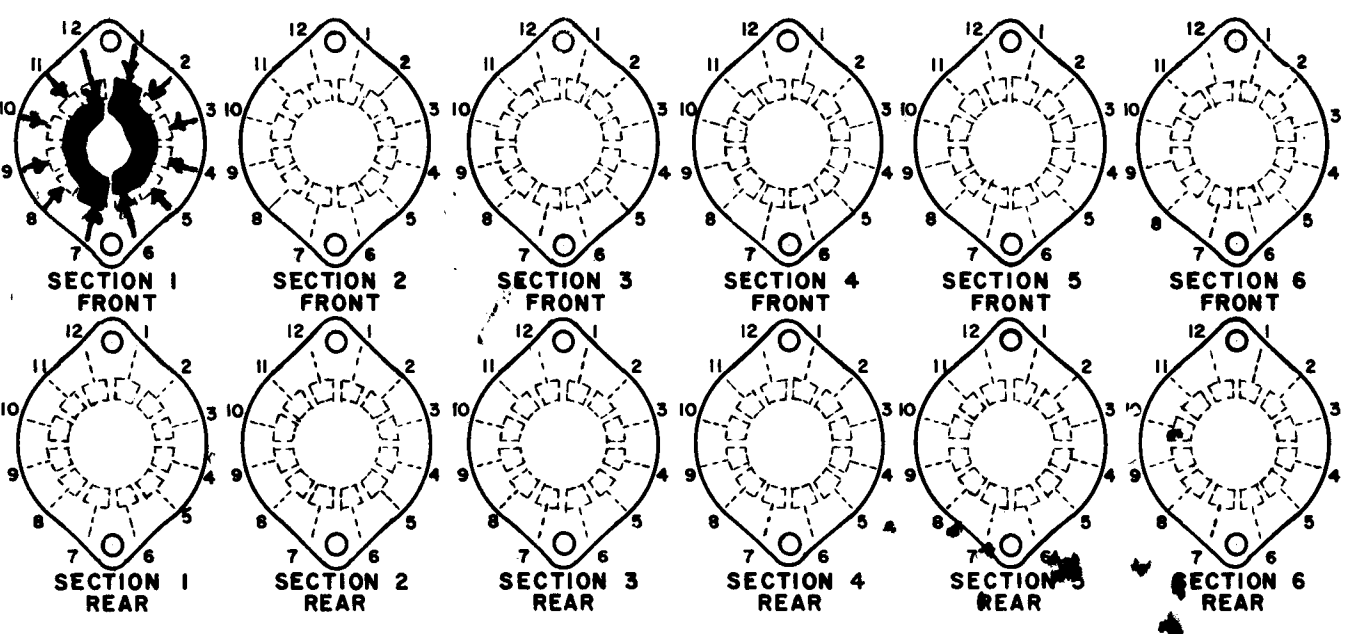
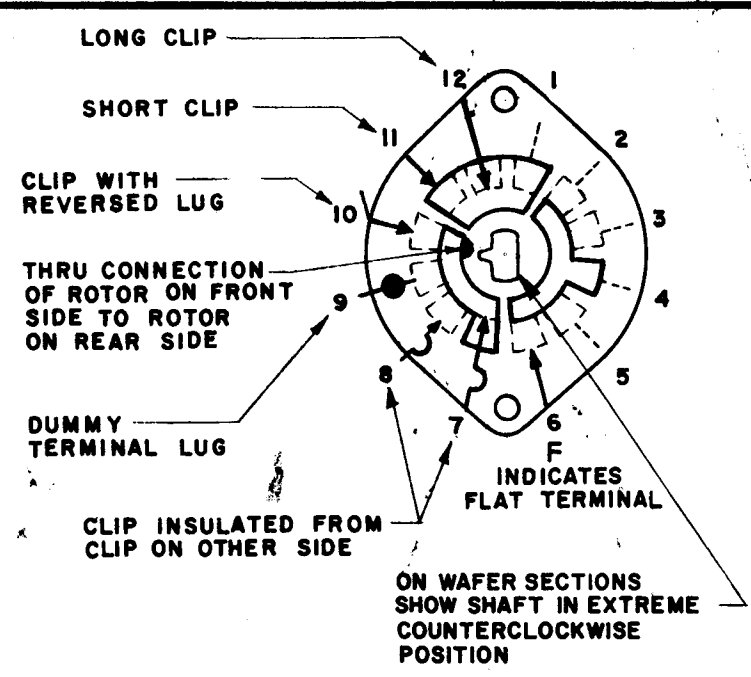
REVISIONS							
ZONE	LTR	DESCRIPTION	DATE	E.M.N.NO	DRAFT	CHKD	APPD
	X	EXPERIMENTAL RELEASE	8/17/67	X	C.V.		
	Ø	ORIG. RELEASE FOR PROD	11-7-68	Ø	R.G.		

TMC PART NUMBER: SW-454 STAMP ON FRONT PLATE
FRONT PLATE SHAPE: ROUND X OR OBLONG
MECHANICAL SPECIFICATIONS:
NUMBER OF SECTIONS- 1
NUMBER OF POSITIONS- 3
ANGLE OF THROW- 30°
CONTACTS:
SHORTING TYPE, SECTIONS _____
NON SHORTING TYPE, SECTIONS 1
SILVER PLATED BRASS, SECTIONS _____
SILVER ALLOY, SECTIONS ALL
WAFERS:
BAKELITE, SECTIONS ALL
CERAMIC, SECTIONS _____
MYCALEX, SECTIONS _____
IMPREGNATION (IF REQ.) _____
FINISH REQUIREMENTS:
ARMY _____ NAVY X COMMERCIAL _____
SALT TEST (IF REQ.) 200 HOURS
HARDWARE, TO BE SUPPLIED BY MANUFACTURER:
1 QUAN. 3/8 -32 NUTS 1/2 ACROSS FLATS
MATERIAL STAINLESS STEEL PLATING PASSIVATE
1 QUAN. 3/8 INTERNAL TOOTH LOCKWASHER
MATERIAL STAINLESS STEEL PLATING PASSIVATE
ELECTRICAL SPECIFICATIONS:
MAXIMUM RATED VOLTAGE _____
MAXIMUM RATED CURRENT _____
NOTE: INDEX: DUAL BALL
FOR S401-13 ("F" TYPE) SWITCHES, THE SHAFT POSITION MUST BE SPECIFIED ON DETAIL "XX" BELOW.



NOTE: OBLONG TYPE FRONT PLATE SHOWN, (SEE MECHANICAL SPECIFICATION)

FRONT AND REAR SECTIONS VIEWED FROM FRONT OR KNOB END OF SWITCH IN EXTREME COUNTERCLOCKWISE POSITION.



SYMBOLS USED IN MARKING PRINT

QTY / UNIT	MODEL USED ON	ASSY NO.
	MSA-4	
	MSAR-4	
APPLICATION		
	CODE	

UNLESS OTHERWISE SPECIFIED DIMENSIONS ARE IN INCHES AND INCLUDE CHEMICALLY APPLIED OR PLATED FINISHES	FINAL APPROVAL	DATE
DECIMALS .X ± .05 .XX ± .01 .XXX ± .005	<i>[Signature]</i>	11/7/68
FRACTIONS 1/64 TOLS. ANGLES 0°-30'	MECH. DES.	DATE
MATERIAL	ELECT. DES.	11-5-68
FINISH	CHECKED	DATE
	DRAWN	10/20/68
		DATE
		8/17/68

THE TECHNICAL MATERIEL CORP. MAMARONECK, NEW YORK			
SWITCH ROTARY			
SIZE	CODE IDENT. NO.	DWG NO.	ISSUE
B	82679	SW 454	Ø
SCALE	SHEET		OF

NOTICE TO PERSONS RECEIVING THIS DRAWING
THE TECHNICAL MATERIEL CORPORATION claims proprietary right in the material disclosed hereon. This drawing is issued in confidence for engineering information only and may not be reproduced or used to manufacture anything shown hereon without permission from THE TECHNICAL MATERIEL CORPORATION to the user. This drawing is loaned for mutual assistance and is subject to recall at any time.

NOTES