

DESG.	DIMENSION	TOL.	REMARK
A	3/4	±.015	SHAFT LG. FROM MTG. SURFACE
B	3/8	±.005	BUSH. LG.
C	+	±.015	FLAT LG. (IF REQ.)
D	+	±2°	FLAT ANGLE (IF REQ.)
E	+	±.002	FLAT (IF REQUIRED)
F	.531	±.010	KEY LOCATION (IF REQ.)
G	180°		KEY LOCATION (IF REQ.)
M	.125	±.010	
N	1/8	±.093	REAR SCR. EXT.
Q	3/16	±.031	REAR SHAFT EXT.
R	.375		1st SEC. SPACING

REVISIONS						
ZONE	LTR	DESCRIPTION	DATE	E.M.N.NO	DRAFT	CHKD APPD
	X	EXPERIMENTAL RELEASE	8/17/67	X	C.V.	
	Ø	ORIG. RELEASE FOR PROD	11-7-68	Ø	R.G.	

TMC PART NUMBER: SW-455 STAMP ON FRONT PLATE  
 FRONT PLATE SHAPE: ROUND X OR OBLONG  
 MECHANICAL SPECIFICATIONS:  
 NUMBER OF SECTIONS- 1  
 NUMBER OF POSITIONS- 5  
 ANGLE OF THROW- 30°

CONTACTS:  
 SHORTING TYPE, SECTIONS \_\_\_\_\_  
 NON SHORTING TYPE, SECTIONS 1  
 SILVER PLATED BRASS, SECTIONS \_\_\_\_\_  
 SILVER ALLOY, SECTIONS ALL

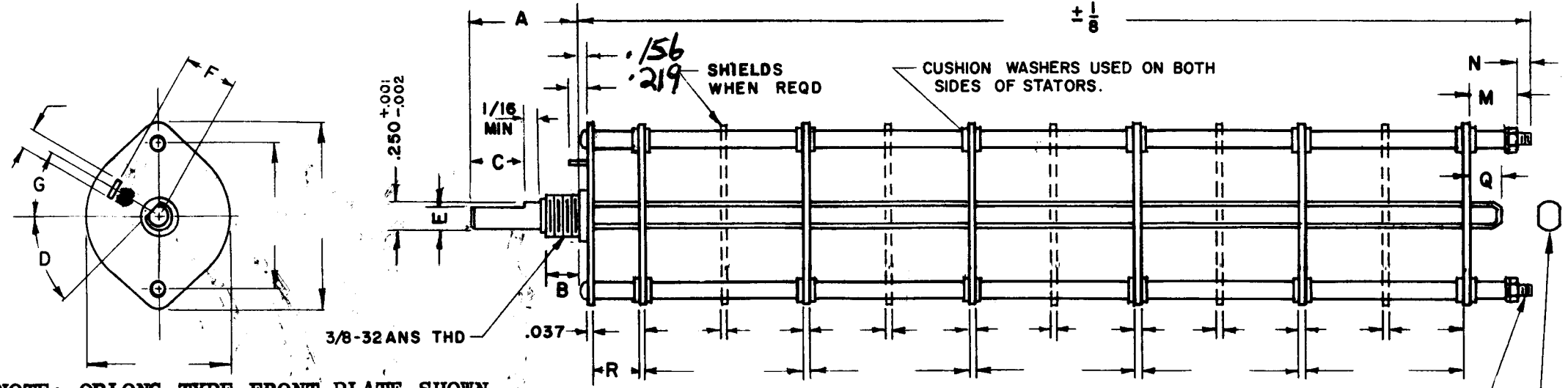
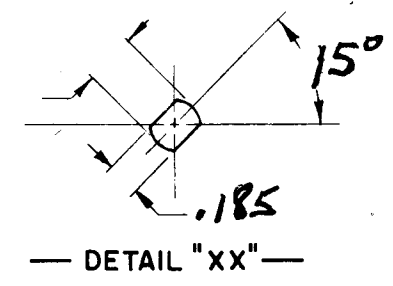
WAFERS:  
 BAKELITE, SECTIONS ALL  
 CERAMIC, SECTIONS \_\_\_\_\_  
 MYCALEX, SECTIONS \_\_\_\_\_  
 IMPREGNATION (IF REQ.) \_\_\_\_\_

FINISH REQUIREMENTS:  
 ARMY     NAVY X COMMERCIAL      
 SALT TEST (IF REQ.) 200 HOURS

HARDWARE, TO BE SUPPLIED BY MANUFACTURER:  
1 QUAN. 3/8 -32 NUTS 1/2 ACROSS FLATS  
 MATERIAL STAINLESS STEEL PLATING PASSIVATE  
1 QUAN. 3/8 INTERNAL TOOTH LOCKWASHER  
 MATERIAL STAINLESS STEEL PLATING PASSIVATE

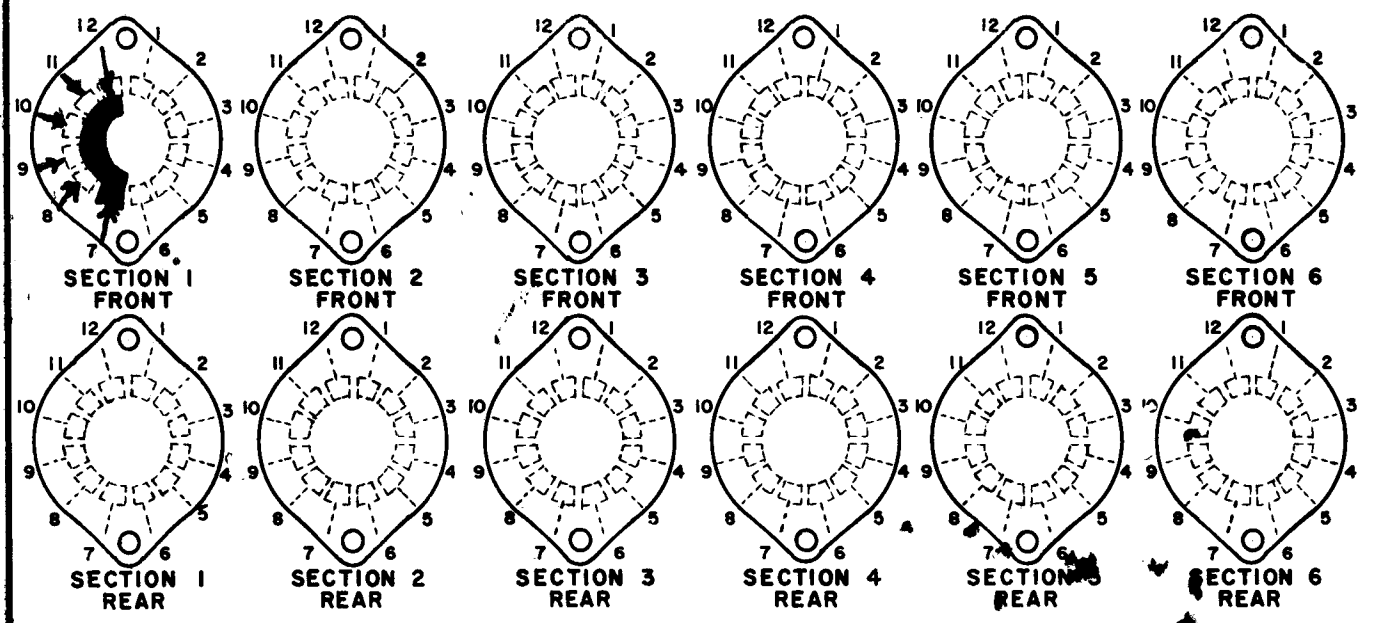
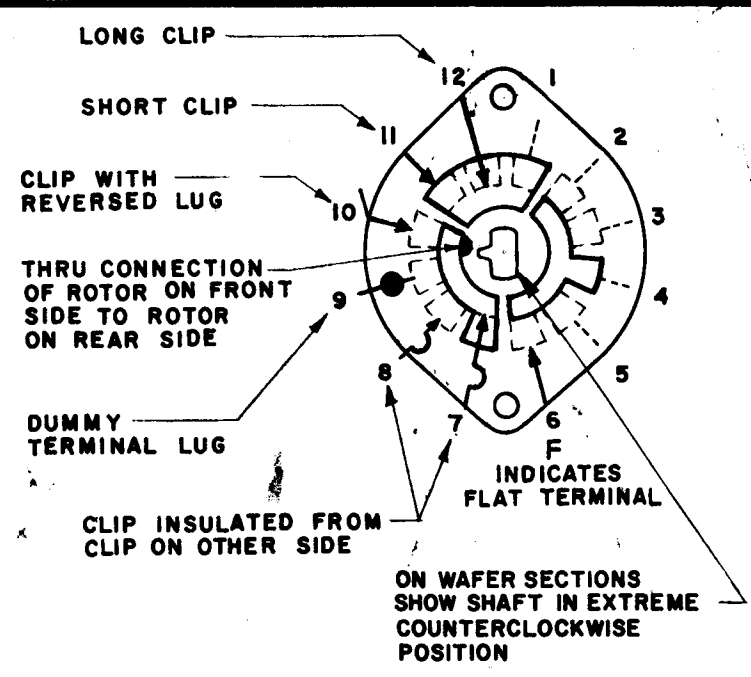
ELECTRICAL SPECIFICATIONS:  
 MAXIMUM RATED VOLTAGE \_\_\_\_\_  
 MAXIMUM RATED CURRENT \_\_\_\_\_

NOTE: INDEX - DUAL BALL  
 FOR S401-13 ("F" TYPE) SWITCHES, THE SHAFT POSITION MUST BE SPECIFIED ON DETAIL "XX" BELOW.



NOTE: OBLONG TYPE FRONT PLATE SHOWN, (SEE MECHANICAL SPECIFICATION)

FRONT AND REAR SECTIONS VIEWED FROM FRONT OR KNOB END OF SWITCH IN EXTREME COUNTERCLOCKWISE POSITION. SEE NOTE (DET. "XX")



### SWITCH, ROTARY - 12 POINT TYPE "F"

QTY / UNIT	MODEL USED ON	ASS'Y NO.
3	MSA-4	
3	MSAR-4	
APPLICATION		
CODE		

DECIMALS	FRACTIONS	FINAL APPROVAL	DATE
.X ± .05	1/64	<i>[Signature]</i>	11/7/68
.XX ± .01	TOLS. ANGLES	MECH. DES. <i>[Signature]</i>	DATE 11-5-68
.XXX ± .005	0° .30'	ELECT. DES. <i>[Signature]</i>	DATE 10/28/68
MATERIAL		DRAWN <i>[Signature]</i>	DATE 8/17/68
FINISH			

THE TECHNICAL MATERIEL CORP.  
 MAMARONECK, NEW YORK  
 SWITCH, ROTARY  
 SIZE B CODE IDENT. NO. 82679 DWG NO. SW 455 ISSUE Ø

NOTICE TO PERSONS RECEIVING THIS DRAWING  
 THE TECHNICAL MATERIEL CORPORATION claims proprietary right in the material disclosed hereon. This drawing is issued in confidence for engineering information only and may not be reproduced or used to manufacture anything shown hereon without permission from THE TECHNICAL MATERIEL CORPORATION to the user. This drawing is loaned for mutual assistance and is subject to recall at any time.

NOTES

SCALE	SHEET	OF