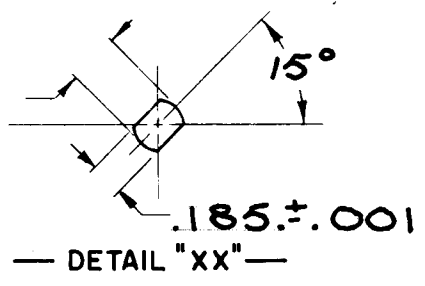
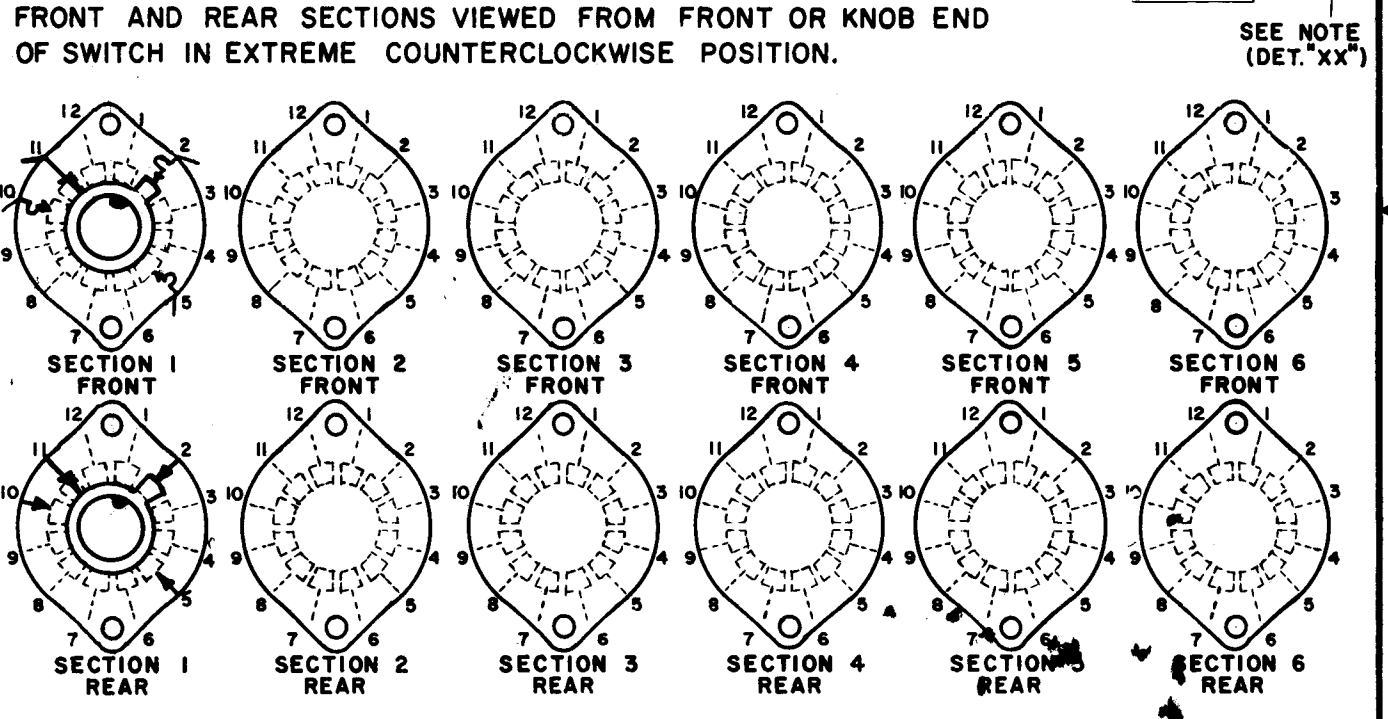
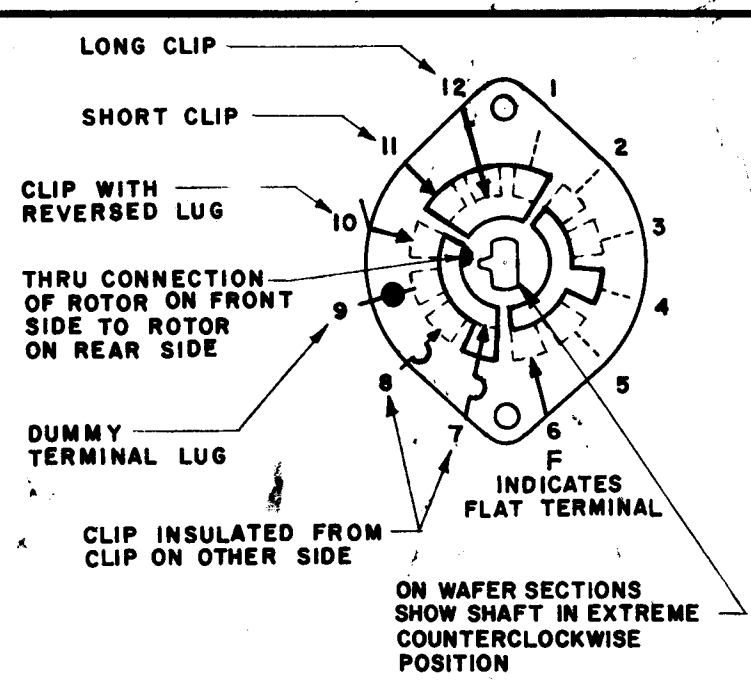
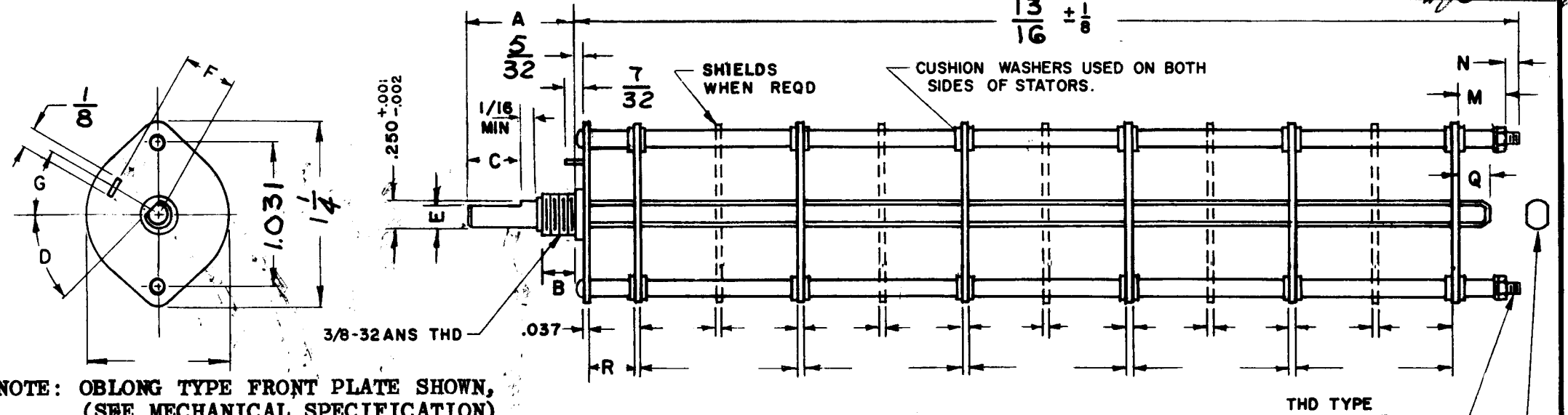


DESG.	DIMENSION	TOL.	REMARK
A	10 15/16	±.015	SHAFT LG. FROM MTG. SURFACE
B	1/4	±.005	BUSH. LG.
C		±.015	FLAT LG. (IF REQ.)
D		±2°	FLAT ANGLE (IF REQ.)
E		±.002	FLAT (IF REQUIRED)
F	17/32	±.010	KEY LOCATION (IF REQ.)
G	0°		KEY LOCATION (IF REQ.)
M	5/32	±.010	
N	1/8	±.093	REAR SCR. EXT.
Q	1/4	±.031	REAR SHAFT EXT.
R	9/32		1st SEC. SPACING

REVISIONS						
ZONE	LTR	DESCRIPTION	DATE	E.M.N.NO	DRAFT	CHKD APPD
	X	EXP. RELEASE	3-8-68			
	Ø	ORIG. RELEASE FOR PROD	3-15-68	Ø	R.G.	
	A	CHG. N' DIM. FRM. 1/2 TO 1/8	7-1-70	19919	GE	

TMC PART NUMBER: SW-468 STAMP ON FRONT PLATE
FRONT PLATE SHAPE: ROUND X OR OBLONG
MECHANICAL SPECIFICATIONS:
NUMBER OF SECTIONS- 1
NUMBER OF POSITIONS- CONTINUOUS
ANGLE OF THROW- 30°
CONTACTS:
SHORTING TYPE, SECTIONS _____
NON SHORTING TYPE, SECTIONS _____
SILVER PLATED BRASS, SECTIONS _____
SILVER ALLOY, SECTIONS _____
WAFERS:
BAKELITE, SECTIONS _____
CERAMIC, SECTIONS _____
MYCALEX, SECTIONS _____
IMPREGNATION (IF REQ.) _____
FINISH REQUIREMENTS:
ARMY _____ NAVY _____ COMMERCIAL X
SALT TEST (IF REQ.) _____
HARDWARE, TO BE SUPPLIED BY MANUFACTURER:
1 QUAN. 3/8-32 NUTS 1/2 ACROSS FLATS
MATERIAL STEEL PLATING CADMIUM
1 QUAN. 3/8 INTERNAL TOOTH LOCKWASHER
MATERIAL STEEL PLATING CADMIUM
ELECTRICAL SPECIFICATIONS:
MAXIMUM RATED VOLTAGE 110 VAC
MAXIMUM RATED CURRENT 1.0 AMPS BREAK
5.0 AMPS CARRY
NOTE:
FOR S401-13 ("F" TYPE) SWITCHES, THE SHAFT POSITION MUST BE SPECIFIED ON DETAIL "XX" BELOW.



SYMBOLS USED IN MARKING PRINT

1	MMX-1-M	
QTY / UNIT	MODEL USED ON	ASS'Y NO.
APPLICATION		
	CODE	

UNLESS OTHERWISE SPECIFIED DIMENSIONS ARE IN INCHES AND INCLUDE CHEMICALLY APPLIED OR PLATED FINISHES	FINAL APPROVAL DATE 3-19-68
MECH. DES.	DATE 3-15-68
ELECT. DES.	DATE 3-3-68
CHECKED	DATE 3-15-68
DRAWN	DATE 3-8-68

THE TECHNICAL MATERIEL CORP.
MAMARONECK, NEW YORK
SWITCH, ROTARY 10 KHz
(ADDITIONAL)

NOTICE TO PERSONS RECEIVING THIS DRAWING
THE TECHNICAL MATERIEL CORPORATION claims proprietary right in the material disclosed hereon. This drawing is issued in confidence for engineering information only and may not be reproduced or used to manufacture anything shown hereon without permission from THE TECHNICAL MATERIEL CORPORATION to the user. This drawing is loaned for mutual assistance and is subject to recall at any time.

MATERIAL	
FINISH	

SIZE	CODE IDENT. NO.	DWG NO.	ISSUE
B	82679	SW468	4
SCALE	SHEET		OF

NOTES