

| DESG. | DIMENSION | TOL. | REMARK |
|-------|-----------|-------|-----------------------------|
| A | 25/32 | ±.015 | SHAFT LG. FROM MTG. SURFACE |
| B | 3/8 | ±.005 | BUSH. LG. |
| C | | ±.015 | FLAT LG. (IF REQ.) |
| D | | ±2° | FLAT ANGLE (IF REQ.) |
| E | | ±.002 | FLAT (IF REQUIRED) |
| F | | ±.010 | KEY LOCATION (IF REQ.) |
| G | | | KEY LOCATION (IF REQ.) |
| M | 7/64 | ±.010 | |
| N | 3/32 | ±.093 | REAR SCR. EXT. |
| Q | 1/4 | ±.031 | REAR SHAFT EXT. |
| R | 1/4 | | 1st SEC. SPACING |

TMC PART NUMBER: SW- _____ STAMP ON FRONT PLATE
 FRONT PLATE SHAPE: ROUND OR OBLONG

MECHANICAL SPECIFICATIONS:
 NUMBER OF SECTIONS- 4
 NUMBER OF POSITIONS- 10
 ANGLE OF THROW- 30°

CONTACTS:
 SHORTING TYPE, SECTIONS
 NON SHORTING TYPE, SECTIONS _____
 SILVER PLATED BRASS, SECTIONS
 SILVER ALLOY, SECTIONS _____

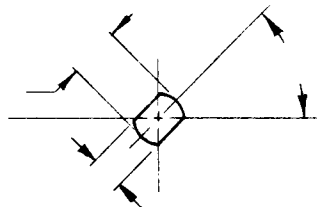
WAFERS:
 BAKELITE, SECTIONS
 CERAMIC, SECTIONS _____
 MYCALEX, SECTIONS _____
 IMPREGNATION (IF REQ.) _____

FINISH REQUIREMENTS:
 ARMY _____ NAVY _____ COMMERCIAL
 SALT TEST (IF REQ.) _____

HARDWARE, TO BE SUPPLIED BY MANUFACTURER:
 1 QUAN. 3/8 -32 NUTS ACROSS FLATS
 MATERIAL STEEL PLATING CAD
 1 QUAN. 3/8 INTERNAL TOOTH LOCKWASHER
 MATERIAL STEEL PLATING CAD

ELECTRICAL SPECIFICATIONS:
 MAXIMUM RATED VOLTAGE _____
 MAXIMUM RATED CURRENT _____

NOTE:
 FOR S401-13 ("F" TYPE) SWITCHES, THE SHAFT POSITION MUST BE SPECIFIED ON DETAIL "XX" BELOW.



— DETAIL "XX" —

NOTES

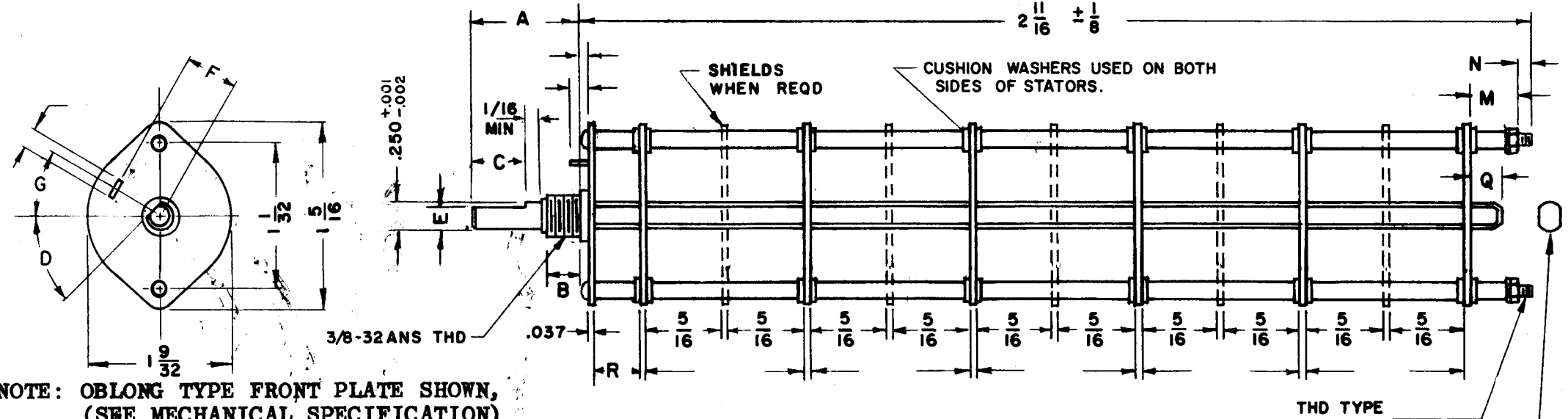
| | | |
|-------------|---------------|-----------|
| RASY - I | | |
| QTY / UNIT | MODEL USED ON | ASS'Y NO. |
| APPLICATION | | |
| CODE | | |

NOTICE TO PERSONS RECEIVING THIS DRAWING
 THE TECHNICAL MATERIEL CORPORATION claims proprietary right in the material disclosed hereon. This drawing is issued in confidence for engineering information only and may not be reproduced or used to manufacture anything shown hereon without permission from THE TECHNICAL MATERIEL CORPORATION to the user. This drawing is loaned for mutual assistance and is subject to recall at any time.

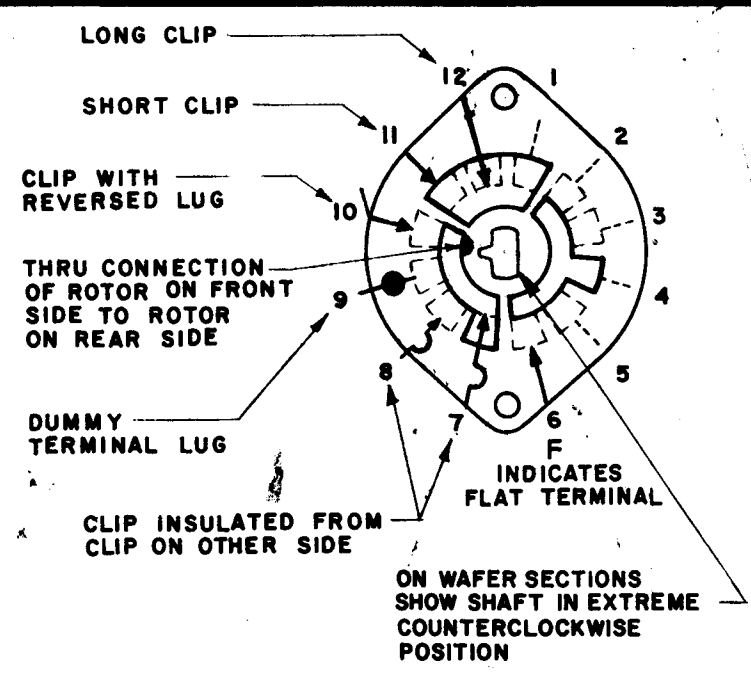
| | | | |
|---|--|----------------------------------|-----------------|
| UNLESS OTHERWISE SPECIFIED DIMENSIONS ARE IN INCHES AND INCLUDE CHEMICALLY APPLIED OR PLATED FINISHES | | FINAL APPROVAL <i>R. Uzzo</i> | DATE 8-18-69 |
| DECIMALS .X ± .05 .XX ± .01 .XXX ± .005 | FRACTIONS 1/64 ANGLES 0° .30' | MECH. DES. <i>R. Uzzo</i> | DATE 8-18-69 |
| MATERIAL | | ELECT. DES. | DATE |
| FINISH | | CHECKED | DATE |
| | | DRAWN | DATE |

| | | | |
|--|--------------------------|-------------------|--|
| THE TECHNICAL MATERIEL CORP. MAMARONECK, NEW YORK | | | |
| SWITCH, ROTARY CHANNEL SELECTOR | | | |
| SIZE B | CODE IDENT. NO. 82679 | DWG NO. SW 504 | ISSUE <input checked="" type="checkbox"/> |
| SCALE | SHEET | | OF |

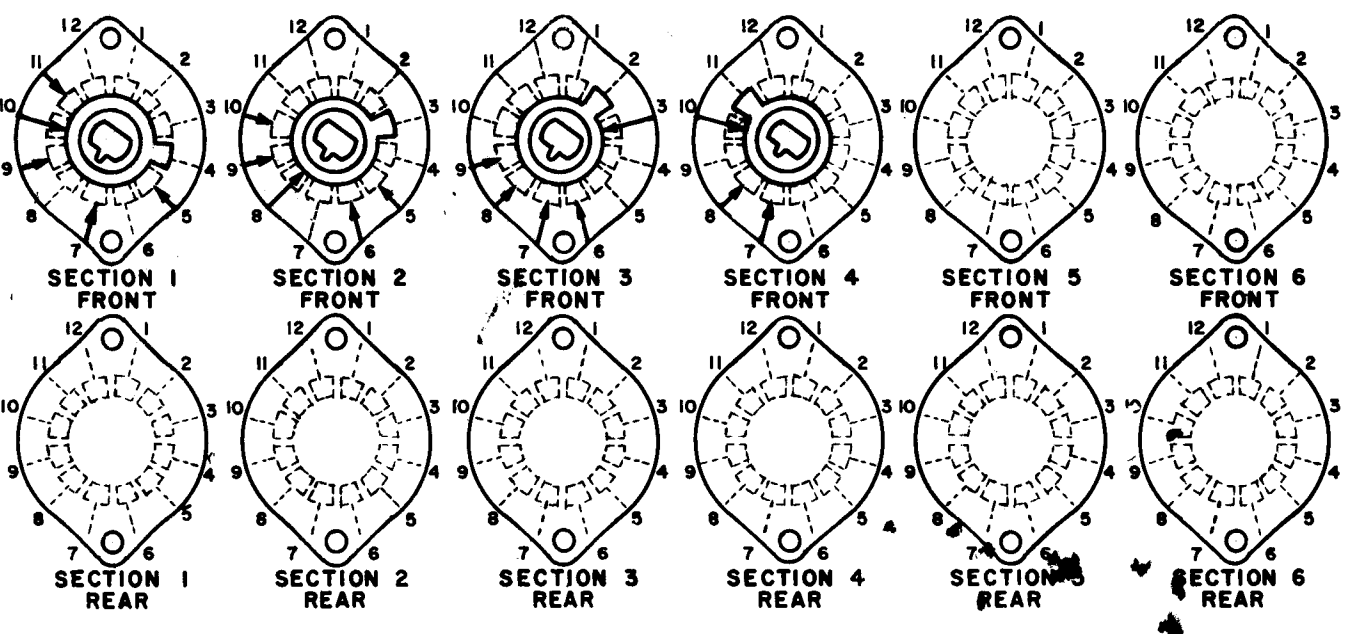
| REVISIONS | | | | | | |
|-----------|-----|------------------|---------|----------|-------|-----------|
| ZONE | LTR | DESCRIPTION | DATE | E.M.N.NO | DRAFT | CHKD APPD |
| | Ø | ORIGINAL DRAWING | 8/18/69 | | W | |



NOTE: OBLONG TYPE FRONT PLATE SHOWN,
 (SEE MECHANICAL SPECIFICATION)



FRONT AND REAR SECTIONS VIEWED FROM FRONT OR KNOB END OF SWITCH IN EXTREME COUNTERCLOCKWISE POSITION. SEE NOTE (DET. "XX")



SYMBOLS USED IN MARKING PRINT

SWITCH, ROTARY - 12 POINT TYPE