

FLANGE MTG. SECTION "A"			FOOT MTG. SECTION "B"		
DESG	DIM.	REMARKS	DESG	DIM.	REMARKS
A	4 3/4	OVERALL SHAFT LENGTH	A		OVERALL SHAFT LENGTH
B	2 5/16	SHAFT LENGTH TO REAR PLATE	B		SHAFT LENGTH TO REAR PLATE
C	1 3/4	WIDTH CLIP TO CLIP	C		WIDTH CLIP TO CLIP
D	1 9/16	LENGTH & WIDTH OF FLANGE	F		DISTANCE FROM FRONT FOOT MTG. TO DUST COVER
E	1.250	HOLE MTG. OF FLANGE	H		FOOT MTG. SIDE VIEW
F	15/16	DISTANCE FROM FLANGE TO DUST COVER	J		SIDE VIEW OVERALL
			K		SIDE VIEW WIDTH OVERALL
			G		LENGTH FOOT TO FOOT

Switch Specifications

Mechanical

Rotation of Solenoid (viewed from solenoid end): CW CCW X (LEFT HAND)

No. of sections: 5
 No. of positions: 12
 Angle of throw: 30°

Type Mounting: Flange X Foot
 Solenoid Connections: Solder lug Wire X

Contacts

HOMING NOTCH type, Sections 1
 Non-shorting, Sections 235
 Silver plated Brass
 Silver alloy X

Wafer material: Phenolic X Other
 Finish: Comm. , 50hr. X SALT SPRAY.
 Opr. temp.: 0°C TO 80°C

Wafer Type F OR EQUIV.
 Electrical Specs.

Current rating: Carry 5 amps resistive max.
 Break @ 24 volts: 2.5 amp resistive max.
 Break @ 115 volts: .5 amp resistive max.
 Dielectric Strength: 1000v clip to clip, 500v insulated clips back to back.

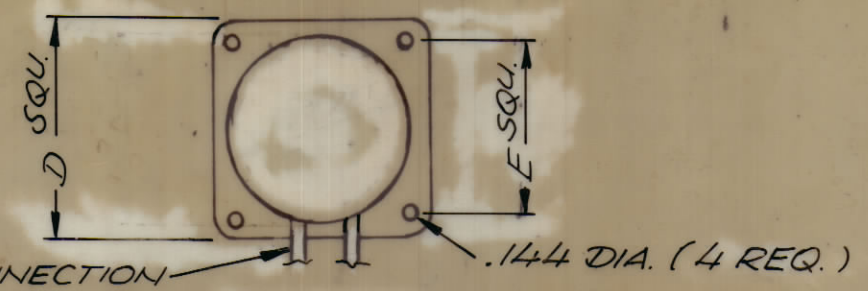
Coil Specifications

Solenoid Size: 3E
 Coil Resistance @ 20° C: 8.02 OHMS
 Voltage: 28 VDC MIN
 Gross Starting Torque @ 20° C:
 Duty Cycle: 1/10
 Rotary Stroke Angle: 35°
 Electric Strength:
 Dust Cover: with X w/out

NOTES:

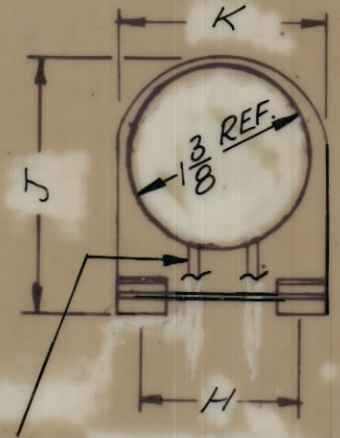
- View wafers from solenoid end of switch.
- Rear side of wafer viewed as if looking through wafers, from solenoid end.
- Orientation of wafer is with Pin 1 in the one o'clock position, as viewed from the solenoid end with solenoid connecting wires or terminals facing down.

FLANGE MOUNTING SECTION "A"

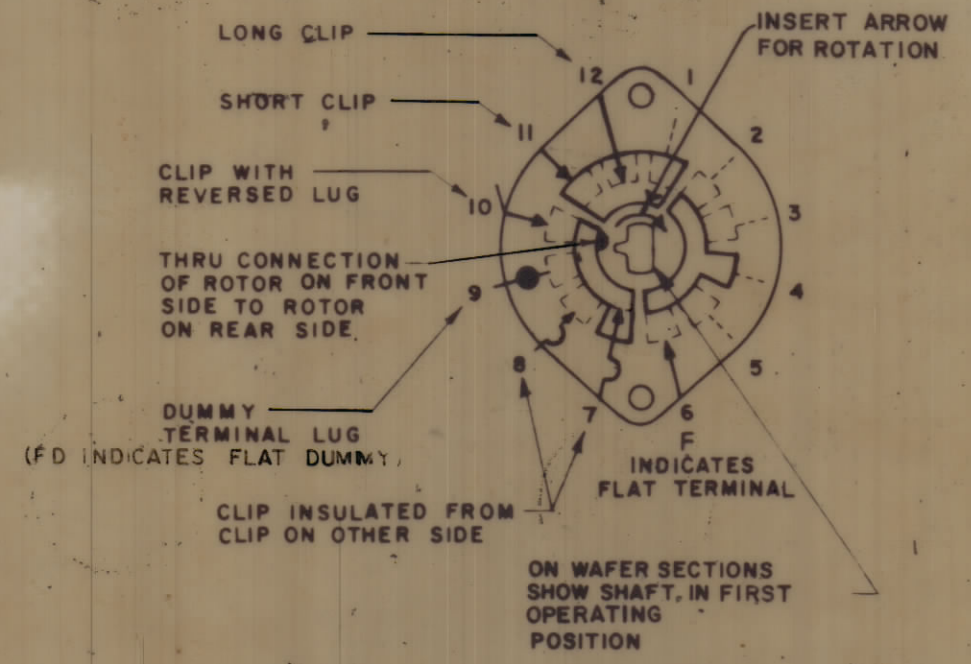
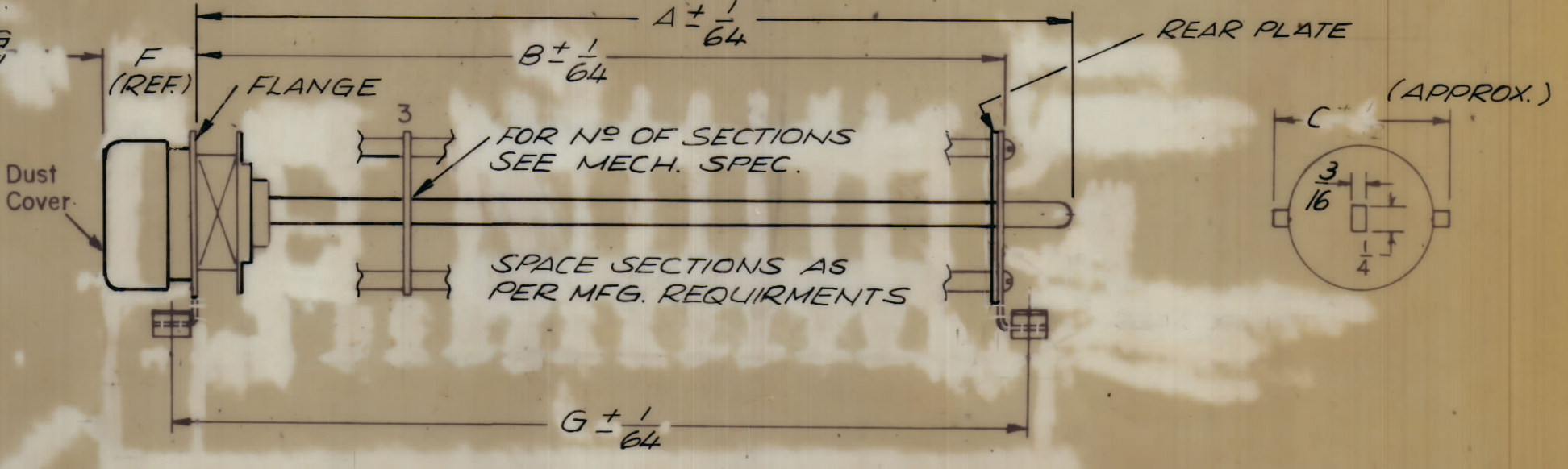


FOR TYPE OF CONNECTION WIRE OR LUG SEE MECH. SPEC.

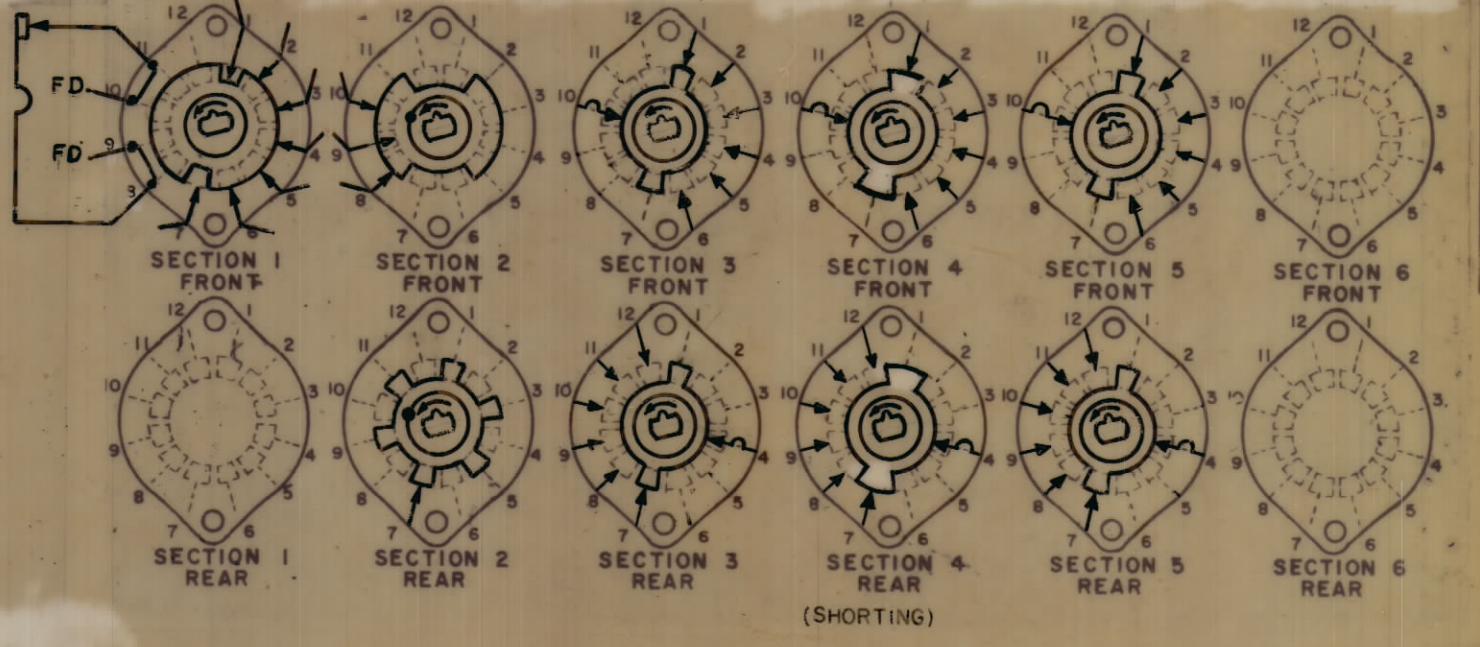
FOOT MOUNTING SECTION "B"



FOR TYPE OF CONNECTION WIRE OR LUG SEE MECH. SPEC.



SYMBOLS USED IN MARKING PRINT



STANDARD DRAWING

NOTES

1	MSAR-4	
QTY/UNIT	MODEL USED ON	ASS'Y. NO.
SCALE	CODE	
DO NOT SCALE		

THE CONTENTS OF THIS DRAWING ARE THE EXCLUSIVE PROPERTY OF THE TECHNICAL MATERIEL CORP. ITS UNAUTHORIZED USE OR REPRODUCTION IN WHOLE OR IN PART IS STRICTLY FORBIDDEN.

REQ'D.	ITEM	PART NUMBER	DESCRIPTION	SYMBOL
POSE				
LIST OF MATERIAL				
MATERIAL			THE TECHNICAL MATERIEL CORP. MAMARONECK, NEW YORK	
FINISH			TITLE SWITCH, ROTARY, SOLENOID, MODE 12 POSITION	
UNLESS OTHERWISE SPECIFIED DIMENSIONS ARE IN INCHES AND INCLUDE CHEMICALLY APPLIED OR PLATED FINISHES			DRAWN: <u>K. Vint</u> DATE: <u>11/7/60</u>	
DECIMALS: X ± .05, XX ± .01, XXX ± .005			CHECKED: <u>Fide</u> DATE: <u>11/8/60</u>	
FRACTIONS: ± 1/64, ANGLE: ± 1°			ELECT. DES: <u>De Marco</u> DATE: <u>11/14/60</u>	
TOLERANCES			MECH. DES: <u>11/14/60</u>	
			DATE: <u>11/14/60</u>	
			SHEET	
			REV. LTR.	

SM 509

SW 509