

DESG.	DIMENSION	TOL.	REMARK
A	3/4	±.015	SHAFT LG. FROM MTG. SURFACE
B	3/8	±.005	BUSH. LG.
C	—	±.015	FLAT LG. (IF REQ.)
D	—	±2°	FLAT ANGLE (IF REQ.)
E	—	±.002	FLAT (IF REQUIRED)
F	17/32	±.010	KEY LOCATION (IF REQ.)
G	180°		KEY LOCATION (IF REQ.)
M	5/32	±.010	
N	1/8	±.093	REAR SCR. EXT.
Q	3/16	±.031	REAR SHAFT EXT.
R	9/32		1st SEC. SPACING

REVISIONS						
ZONE	LTR	DESCRIPTION	DATE	E.M.N.NO	DRAFT	CHKD
	X	EXP. RELEASE	6/3/69			KH
	Ø	ORIGINAL RELEASE	6/29/69			KH
	A	ADD CLIPS TO SEC. 1 REAR	11-30-72	20958	GE	EJ

TMC PART NUMBER: SW- _____ STAMP ON FRONT PLATE
FRONT PLATE SHAPE: ROUND ✓ OR OBLONG
MECHANICAL SPECIFICATIONS:
NUMBER OF SECTIONS- 2
NUMBER OF POSITIONS- 4
ANGLE OF THROW- 30°

CONTACTS:
SHORTING TYPE, SECTIONS _____
NON SHORTING TYPE, SECTIONS 1, 2
SILVER PLATED BRASS, SECTIONS 1, 2
SILVER ALLOY, SECTIONS _____

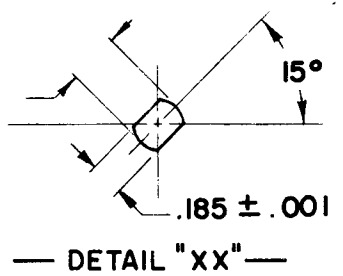
WAFERS:
BAKELITE, SECTIONS 1, 2
CERAMIC, SECTIONS _____
MYCALEX, SECTIONS _____
IMPREGNATION (IF REQ.) _____

FINISH REQUIREMENTS:
ARMY _____ NAVY _____ COMMERCIAL ✓
SALT TEST (IF REQ.) _____

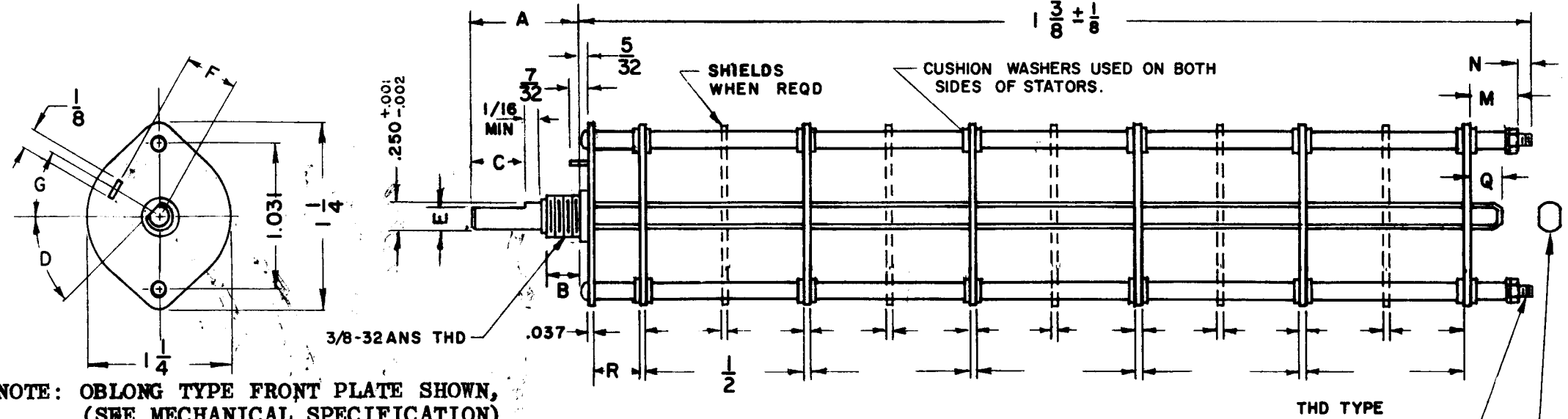
HARDWARE, TO BE SUPPLIED BY MANUFACTURER:
1 QUAN. 3/8 -32 NUTS 1/2 ACROSS FLATS
MATERIAL STEEL PLATING CADMIUM
1 QUAN. 3/8 INTERNAL TOOTH LOCKWASHER
MATERIAL STEEL PLATING CADMIUM

ELECTRICAL SPECIFICATIONS:
MAXIMUM RATED VOLTAGE 110 VAC
MAXIMUM RATED CURRENT 1.0 AMP BREAK
5.0AMP CARRY

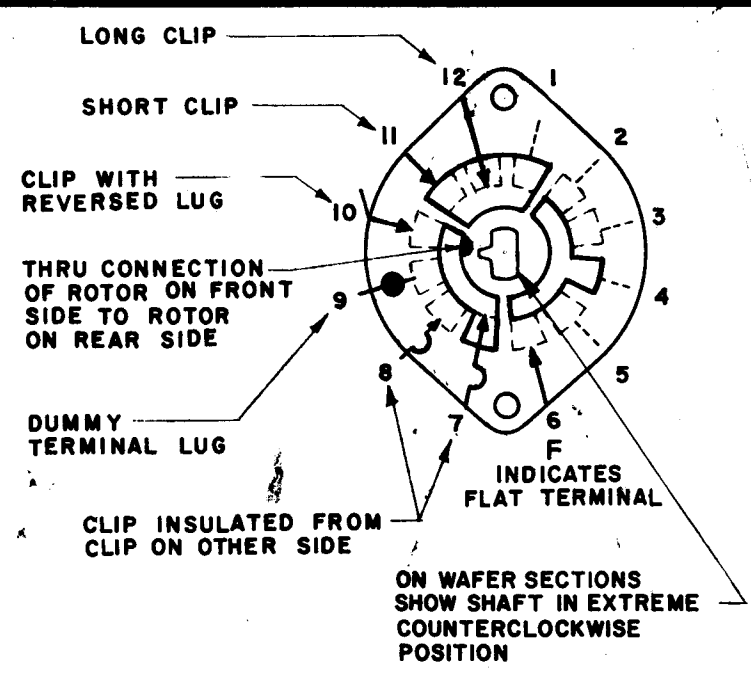
NOTE:
FOR S401-13 ("F" TYPE) SWITCHES, THE SHAFT POSITION MUST BE SPECIFIED ON DETAIL "XX" BELOW.



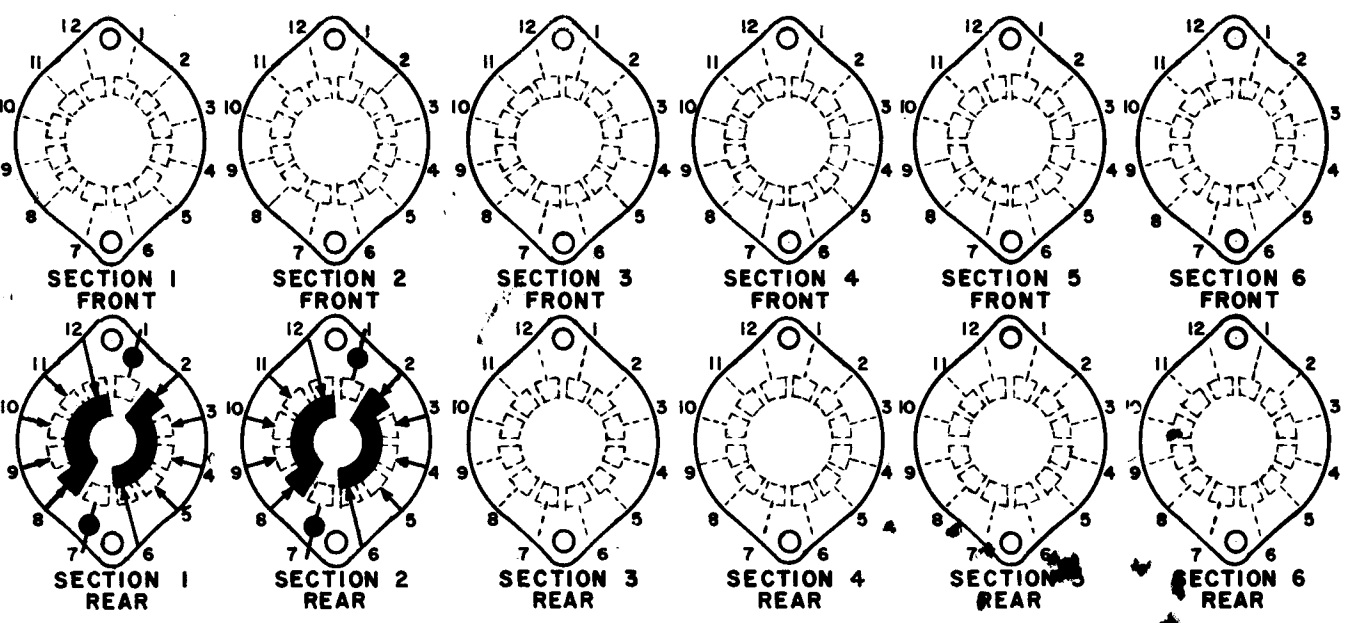
NOTES



NOTE: OBLONG TYPE FRONT PLATE SHOWN, (SEE MECHANICAL SPECIFICATION)



FRONT AND REAR SECTIONS VIEWED FROM FRONT OR KNOB END OF SWITCH IN EXTREME COUNTERCLOCKWISE POSITION.



SYMBOLS USED IN MARKING PRINT

POSE SWITCH, ROTARY - 12 POINT TYPE "F"

1		CMR() 4	UNLESS OTHERWISE SPECIFIED DIMENSIONS ARE IN INCHES AND INCLUDE CHEMICALLY APPLIED OR PLATED FINISHES		APPROVAL SFM	DATE 6/18/69	THE TECHNICAL MATERIEL CORP. MAMARONECK, NEW YORK	
QTY / UNIT	MODEL USED ON	ASS'Y NO.	DECIMALS .X ± .05 .XX ± .01 .XXX ± .005	FRACTIONS 1/64 ANGLES 0°-30'	ELECT. DES. AQB	DATE 6-4-69	SWITCH ROTARY MODE	
APPLICATION			MATERIAL		CHECKED Jde	DATE 6/3/69	SIZE B	
CODE			FINISH		DRAWN J. Hill	DATE 6/3/69	CODE IDENT. NO. 82679	DWG NO. SW 520
NOTICE TO PERSONS RECEIVING THIS DRAWING THE TECHNICAL MATERIEL CORPORATION claims proprietary right in the material disclosed hereon. This drawing is issued in confidence for engineering information only and may not be reproduced or used to manufacture anything shown hereon without permission from THE TECHNICAL MATERIEL CORPORATION to the user. This drawing is loaned for mutual assistance and is subject to recall at any time.								
SCALE			SHEET			OF		
ISSUE A								