

APPLICATION			REVISIONS						
QTY	MODEL USED ON	ASS'Y NO.	LTR	DESCRIPTION	DATE	E.M.N.NO	DRAFT	CHKD	APPD
	PHLH-10K	AX508Z	X	EXP. RELEASE	12/1/69				
			Ø	ORIGINAL RELEASE	1/6/70				

TMC P/N	MFR P/N	STACK HEIGHTS		CONTACT ASSEMBLY	
		DIM "X" MAX	DIM "Y" MAX	POS 1	POS 2
SW523-1	41306	17/32	17/32	1-C	1-C
-2	41308	1/2	1/2	2-A	2-A
-3	41324	3/4	3/4	4-C	4-C

MATERIAL SPECIFICATIONS

FRAME: Steel, iridescent iridite finish over cadmium plating.

BUSHING AND ACTUATOR: Brass, nickel plated.

SPRINGS: Spring tempered nickel silver.

CONTACTS: Welded cross bar palladium. Fine silver and other alloys in various sizes available on special order.

INSULATION: Paper base phenolic spacers with plastic tubing through the stack assembly. Lifters of molded nylon.

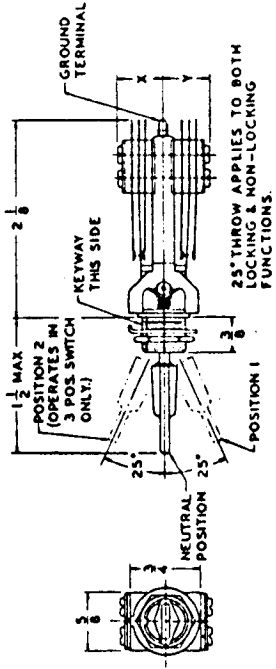
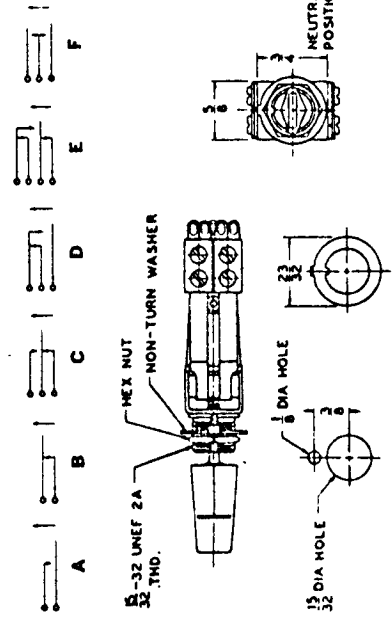
LIFTER-ROLLER ASSEMBLY: Molded plastic.

KNOB: Supplied with a "Paddle" shaped, screw-on black plastic knob. Other colors such as red (M-1360-1), blue (M-1360-4) and white (M-1360-5) and/or styles such as the "Contour" knobs—Series M-1177; "Tear-Drop" knobs—Series M-1066 available on separate order.

TERMINALS: Solder, hot tin dipped.

MOUNTING HARDWARE: Supplied with one brass, nickel plated hex locknut (P-1053-1) and one non-turn washer (P-1063-9), steel, iridescent iridite finish over cadmium plating. See Catalog H-602 for details.

PACKAGED: 1 per standard distributor package.



REQ'D ITEM	PART NUMBER	DESCRIPTION	SYM.
LIST OF MATERIAL			
THE TECHNICAL MATERIEL CORP.			
MAMARONECK, NEW YORK			
SWITCH LEVER THREE POS.			
SIZE	CODE IDENT. NO.	DWG NO.	ISSUE
A	82679	SW 523	Ø
SCALE	SHEET	OF	

FINAL APPROVAL	DATE
F. BUDETTI	1-2-70
MECH. DES.	DATE
	1-2-70
ELECT. DES.	DATE
	1-2-70
CHECKED	DATE
	1-2-70
DRAWN	DATE
	12/1/69

NOTICE TO PERSONS RECEIVING THIS DRAWING

THE TECHNICAL MATERIEL CORPORATION claims proprietary right in the material disclosed hereon. This drawing is issued in confidence for engineering information only and may not be reproduced or used to manufacture anything shown hereon without permission from THE TECHNICAL MATERIEL CORPORATION to the user. This drawing is loaned for mutual assistance and is subject to recall at any time.