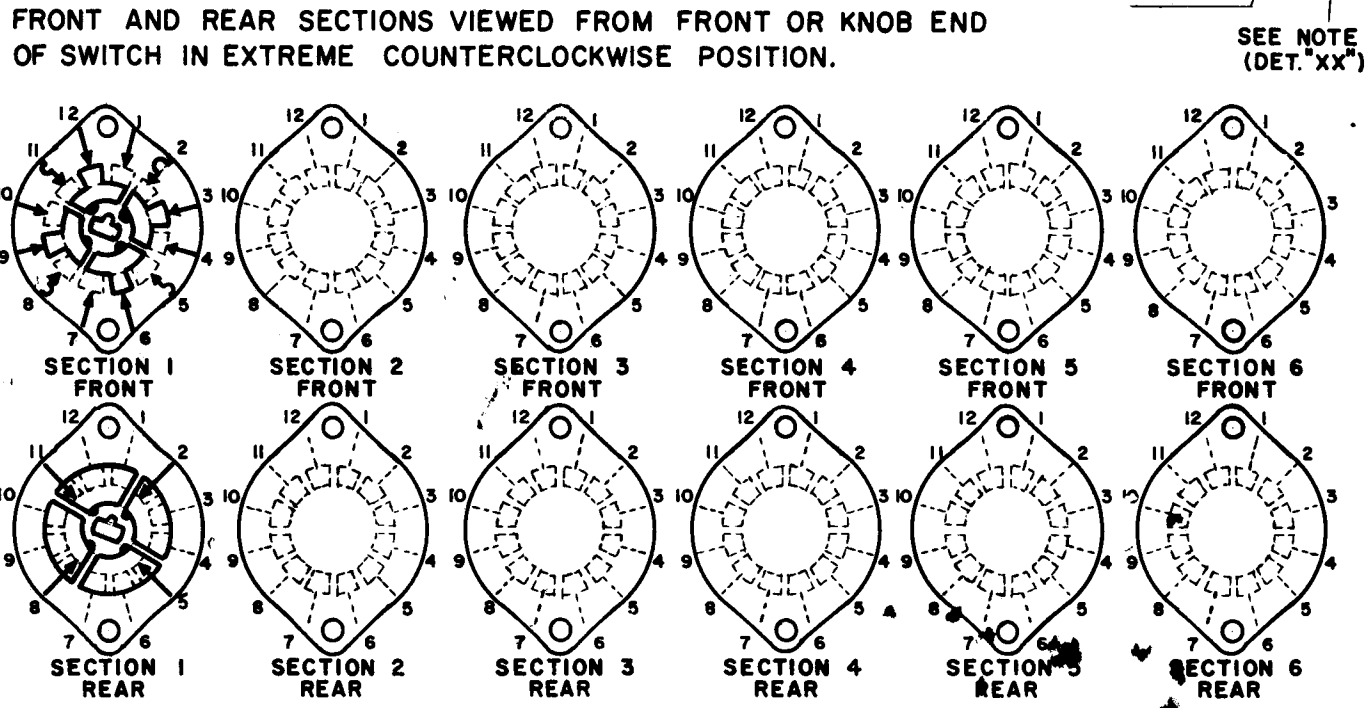
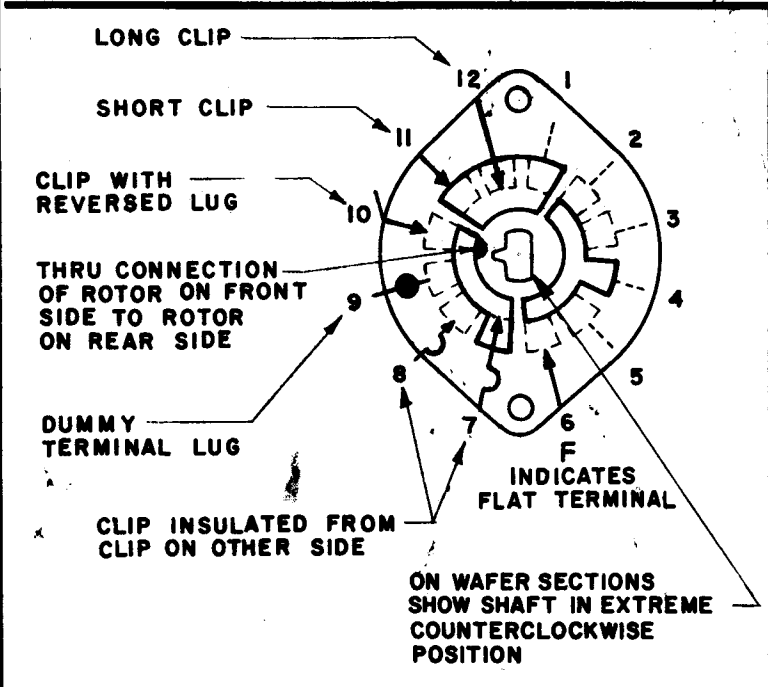
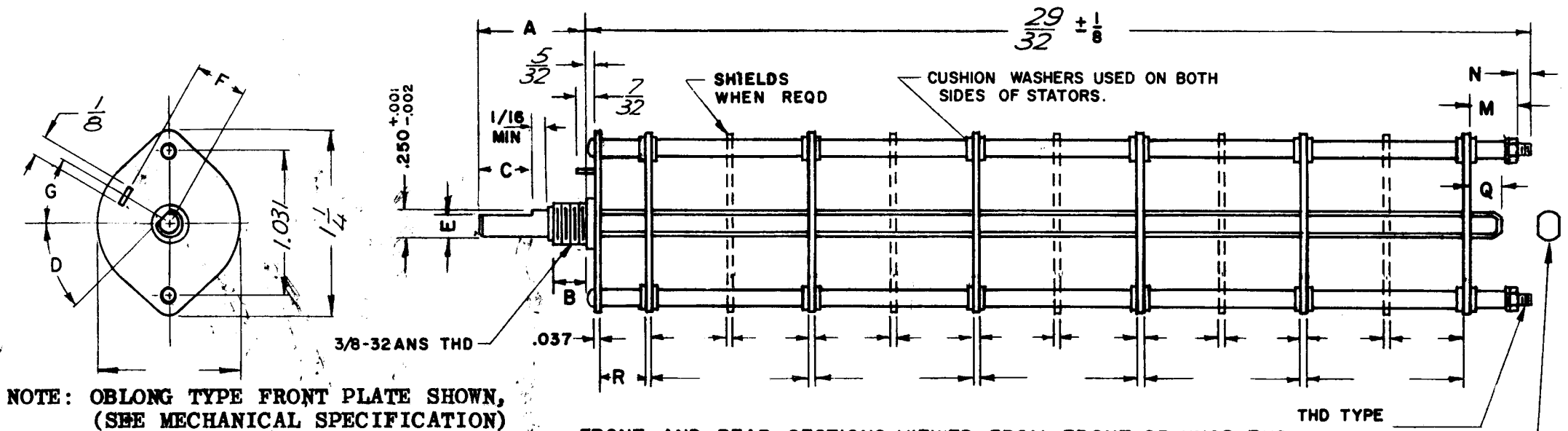
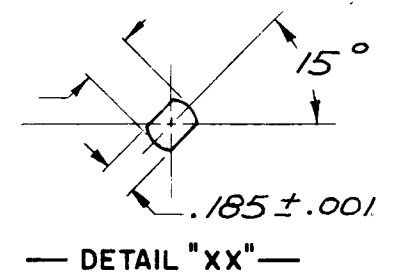


DESG.	DIMENSION	TOL.	REMARK
A	2	±.015	SHAFT LG. FROM MTG. SURFACE
B	3/8	±.005	BUSH. LG.
C	—	±.015	FLAT LG. (IF REQ.)
D	—	±2°	FLAT ANGLE (IF REQ.)
E	—	±.002	FLAT (IF REQUIRED)
F	17/32	±.010	KEY LOCATION (IF REQ.)
G	180°		KEY LOCATION (IF REQ.)
M	5/32	±.010	
N	1/8	±.093	REAR SCR. EXT.
Q	3/16	±.031	REAR SHAFT EXT.
R	3/8		1st SEC. SPACING

REVISIONS						
ZONE	LTR	DESCRIPTION	DATE	E.M.N.NO	DRAFT	CHKD APPD
	X	EXP. RELEASE	1/23/70			
	Ø	ORIGINAL RELEASE	1/9/70			

TMC PART NUMBER: SW- _____ STAMP ON FRONT PLATE
 FRONT PLATE SHAPE: ROUND X OR OBLONG
 MECHANICAL SPECIFICATIONS:
 NUMBER OF SECTIONS- /
 NUMBER OF POSITIONS- /
 ANGLE OF THROW- 30°
 CONTACTS:
 SHORTING TYPE, SECTIONS _____
 NON SHORTING TYPE, SECTIONS /
 SILVER PLATED BRASS, SECTIONS _____
 SILVER ALLOY, SECTIONS /
 WAFERS:
 BAKELITE, SECTIONS /
 CERAMIC, SECTIONS _____
 MYCALEX, SECTIONS _____
 IMPREGNATION (IF REQ.) _____
 FINISH REQUIREMENTS:
 ARMY NAVY X COMMERCIAL
 SALT TEST (IF REQ.) 200 HOURS
 HARDWARE, TO BE SUPPLIED BY MANUFACTURER:
 / QUAN. 3/8 -32 NUTS 1/2 ACROSS FLATS
 MATERIAL STAINLESS ST. PLATING PASSIVATE
 / QUAN. 3/8 INTERNAL TOOTH LOCKWASHER
 MATERIAL STAINLESS ST. PLATING PASSIVATE
 ELECTRICAL SPECIFICATIONS:
 MAXIMUM RATED VOLTAGE _____
 MAXIMUM RATED CURRENT _____

NOTE: INDEX-DIAL BALL
 FOR S401-13 ("F" TYPE) SWITCHES, THE SHAFT
 POSITION MUST BE SPECIFIED ON DETAIL "XX"
 BELOW.



SYMBOLS USED IN MARKING PRINT

SWITCH, ROTARY - 12 POINT TYPE "F"

3	MSA-4		UNLESS OTHERWISE SPECIFIED DIMENSIONS ARE IN INCHES AND INCLUDE CHEMICALLY APPLIED OR PLATED FINISHES	FINAL APPROVAL MECH. DES.	DATE 1/2-70	THE TECHNICAL MATERIEL CORP. MAMARONECK, NEW YORK			
QTY / UNIT	MODEL USED ON	ASS'Y NO.	DECIMALS .X ± .05 .XX ± .01 .XXX ± .005	ELECT. DES.	DATE	SWITCH ROTARY TIME CONSTANT			
APPLICATION			FRACTIONS 1/64 ANGLES 0°-30'	CHECKED DRAWN	DATE 1-26-70 DATE 1/23/70	SIZE B	CODE IDENT. NO. 82679	DWG NO. SW 528	ISSUE
NOTICE TO PERSONS RECEIVING THIS DRAWING THE TECHNICAL MATERIEL CORPORATION claims proprietary right in the material disclosed hereon. This drawing is issued in confidence for engineering information only and may not be reproduced or used to manufacture anything shown hereon without permission from THE TECHNICAL MATERIEL CORPORATION to the user. This drawing is loaned for mutual assistance and is subject to recall at any time.			MATERIAL			SCALE		SHEET OF	
			FINISH						

NOTES