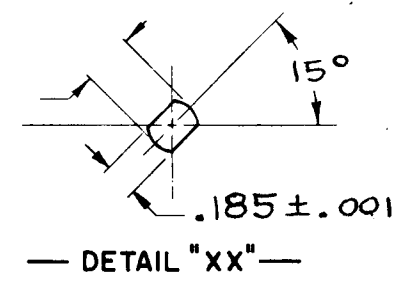


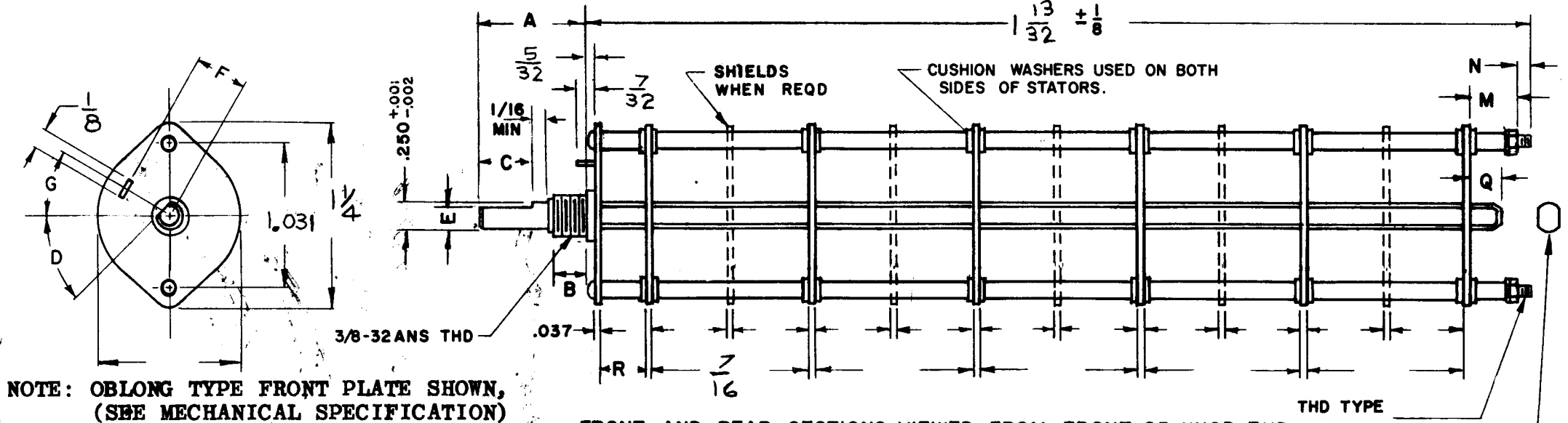
| DESG. | DIMENSION | TOL.  | REMARK                      |
|-------|-----------|-------|-----------------------------|
| A     | 1"        | ±.015 | SHAFT LG. FROM MTG. SURFACE |
| B     | 3/8       | ±.005 | BUSH. LG.                   |
| C     |           | ±.015 | FLAT LG. (IF REQ.)          |
| D     |           | ±2°   | FLAT ANGLE (IF REQ.)        |
| E     |           | ±.002 | FLAT (IF REQUIRED)          |
| F     | 17/32     | ±.010 | KEY LOCATION (IF REQ.)      |
| G     | 180°      |       | KEY LOCATION (IF REQ.)      |
| M     | 5/32      | ±.010 |                             |
| N     | 1/8       | ±.093 | REAR SCR. EXT.              |
| Q     | 3/16      | ±.031 | REAR SHAFT EXT.             |
| R     | 3/8       |       | 1st SEC. SPACING            |

TMC PART NUMBER: SW- \_\_\_\_\_ STAMP ON FRONT PLATE  
FRONT PLATE SHAPE: ROUND X OR OBLONG  
MECHANICAL SPECIFICATIONS:  
NUMBER OF SECTIONS- 2  
NUMBER OF POSITIONS- CONTINUOUS  
ANGLE OF THROW- 30°  
CONTACTS:  
SHORTING TYPE, SECTIONS \_\_\_\_\_  
NON SHORTING TYPE, SECTIONS 1 & 2  
SILVER PLATED BRASS, SECTIONS \_\_\_\_\_  
SILVER ALLOY, SECTIONS 1 & 2  
WAFERS:  
BAKELITE, SECTIONS 1 & 2  
CERAMIC, SECTIONS \_\_\_\_\_  
MYCALEX, SECTIONS \_\_\_\_\_  
IMPREGNATION (IF REQ.) \_\_\_\_\_  
FINISH REQUIREMENTS:  
ARMY \_\_\_\_\_ NAVY X COMMERCIAL \_\_\_\_\_  
SALT TEST (IF REQ.) 200hrs  
HARDWARE, TO BE SUPPLIED BY MANUFACTURER:  
1 QUAN. 3/8 -32 NUTS 1/2 ACROSS FLATS  
MATERIAL STAINLESS STL PLATING PASSIVATE  
1 QUAN. 3/8 INTERNAL TOOTH LOCKWASHER  
MATERIAL STAINLESS STL PLATING PASSIVATE  
ELECTRICAL SPECIFICATIONS:  
MAXIMUM RATED VOLTAGE \_\_\_\_\_  
MAXIMUM RATED CURRENT \_\_\_\_\_

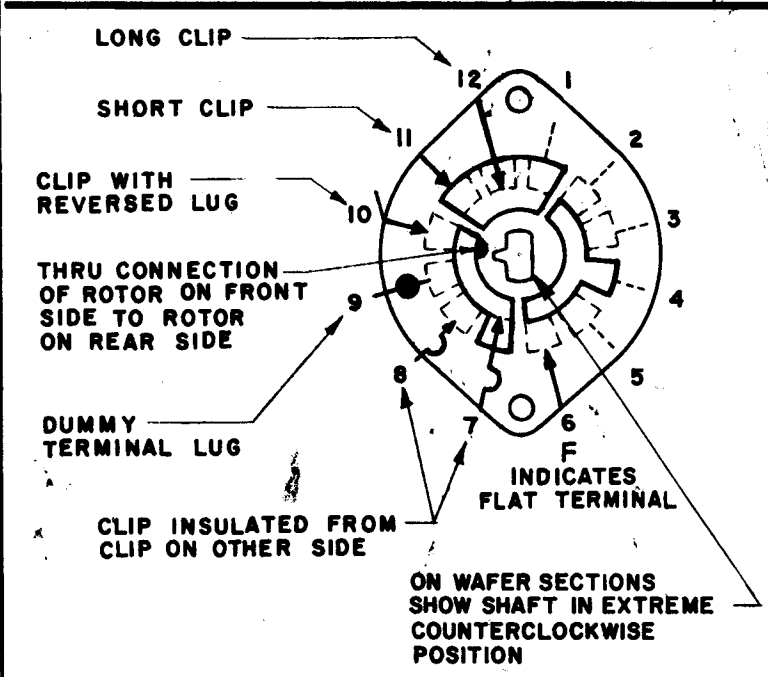
NOTE: INDEX - DUAL BALL  
FOR S401-13 ("F" TYPE) SWITCHES, THE SHAFT POSITION MUST BE SPECIFIED ON DETAIL "XX" BELOW.



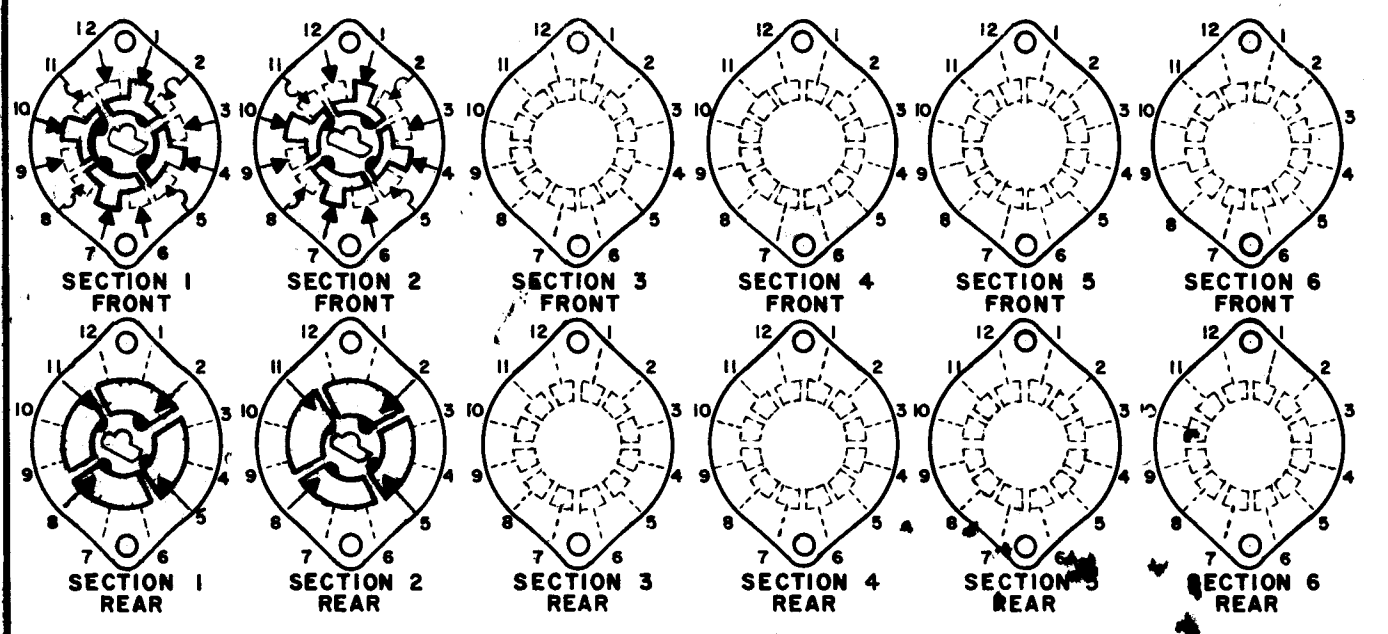
NOTES



NOTE: OBLONG TYPE FRONT PLATE SHOWN, (SEE MECHANICAL SPECIFICATION)



FRONT AND REAR SECTIONS VIEWED FROM FRONT OR KNOB END OF SWITCH IN EXTREME COUNTERCLOCKWISE POSITION.



SYMBOLS USED IN MARKING PRINT

SWITCH, ROTARY - 12 POINT TYPE "F"

|   |  |   |  |                                   |  |  |  |                   |  |                          |  |
|---|--|---|--|-----------------------------------|--|--|--|-------------------|--|--------------------------|--|
| UNLESS OTHERWISE SPECIFIED DIMENSIONS ARE IN INCHES AND INCLUDE CHEMICALLY APPLIED OR PLATED FINISHES   |  | FINAL APPROVAL<br><i>[Signature]</i>    |  | DATE                              |  | THE TECHNICAL MATERIEL CORP.<br>MAMARONECK, NEW YORK |  |                   |  |                          |  |
| DECIMALS<br>.X ± .05<br>.XX ± .01<br>.XXX ± .005  |  | FRACTIONS<br>1/64<br>ANGLES<br>0° - 30' |  | ELECT. DES.<br><i>[Signature]</i> |  | DATE<br>6/5/70                                       |  | SWITCH ROTARY     |  | FUNCTION                 |  |
| MATERIAL  |  | FINISH                                  |  | CHECKED<br><i>[Signature]</i>     |  | DATE<br>1/27/70                                      |  | SIZE<br>B         |  | CODE IDENT. NO.<br>82679 |  |
| QTY / UNIT  |  | MODEL USED ON                           |  | DRAWN<br><i>[Signature]</i>       |  | DATE<br>#22-70                                       |  | DWG NO.<br>SW 529 |  | ISSUE<br>Ø               |  |
| 1   |  | HFR-4                                   |  |                                   |  |  |  | SHEET             |  | OF                       |  |
| APPLICATION   |  | ASS'Y NO.                               |  |                                   |  |  |  |                   |  |                          |  |
| CODE  |  |   |  |                                   |  |  |  |                   |  |                          |  |
| NOTICE TO PERSONS RECEIVING THIS DRAWING<br>THE TECHNICAL MATERIEL CORPORATION claims proprietary right in the material disclosed hereon. This drawing is issued in confidence for engineering information only and may not be reproduced or used to manufacture anything shown hereon without permission from THE TECHNICAL MATERIEL CORPORATION to the user. This drawing is loaned for mutual assistance and is subject to recall at any time. |  |   |  |                                   |  |  |  |                   |  |                          |  |