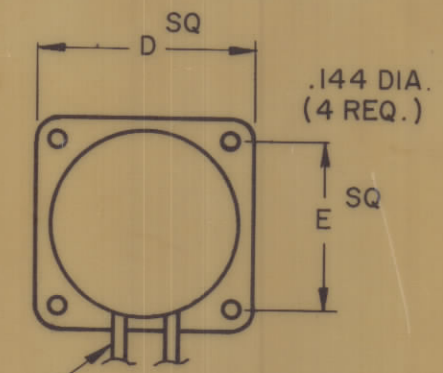


| FLANGE MOUNTING SECTION "A" | | |
|-----------------------------|-----|------------------------------------|
| DESG | DIM | REMARKS |
| A | | OVERALL SHAFT LENGTH * |
| B | | SHAFT LENGTH TO REAR PLATE |
| C | | WIDTH CUP TO CLIP |
| D | | LENGTH & WIDTH OF FLANGE |
| E | | HOLE MTG. OF FLANGE |
| F | | DISTANCE FROM FLANGE TO DUST COVER |

| FOOT MOUNTING SECTION "B" | | |
|---------------------------|---------|---|
| DESG | DIM | REMARKS |
| A | 3 3/16 | OVERALL SHAFT LENGTH |
| B | 3 3/64 | SHAFT LENGTH TO REAR PLATE |
| C | 1 3/4 | WIDTH CLIP TO CUP |
| F | 1 9/32 | DISTANCE FROM FRONT FOOT MTG. TO ARMATURE |
| H | 1 3/16 | FOOT MTG. SIDE VIEW |
| J | 1 13/16 | SIDE VIEW OVERALL |
| K | 1 1/32 | SIDE WIDTH OVERALL |
| G | 3 5/8 | LENGTH FOOT TO FOOT |

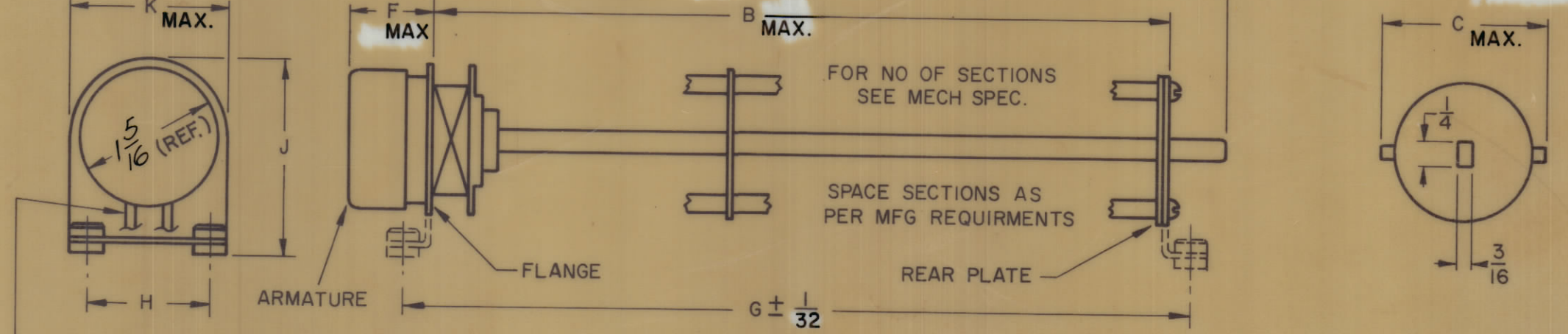
| REVISIONS | | | | | | | |
|-----------|-------|------|------|-----|---------------------------------|---------|----------|
| E.M.N.NO | DRAFT | CHKD | ZONE | LTR | DESCRIPTION | DATE | APPROVED |
| | | | | X | EXP RELEASE | 1/26/70 | |
| | | | | Ø | ORIGINAL RELEASE FOR PRODUCTION | 1/30/70 | |
| C.C. | CV | | | A | MFR REFERENCE ADDED | 2/26/70 | |
| 19829 | LL | off | | B | REVISED & UPDATED | 4/23/70 | |

FLANGE MTG. SECTION "A"



FOR TYPE OF CONNECTION WIRE OR LUG SEE MECH. SPEC.

FOOT MTG. SECTION "B"



FOR TYPE OF CONNECTION WIRE OR LUG SEE MECH. SPEC.

SWITCH SPECIFICATIONS

MECHANICAL

ROTATION OF SOLENOID (VIEWED FROM SOLENOID END): CW ___ CCW X (LEFT HAND)
 NO. OF SECTIONS: 7
 NO. OF POSITIONS: 12
 ANGLE OF THROW: 30°

TYPE MOUNTING: FLANGE ___ FOOT X
 SOLENOID CONNECTIONS: SOLDER LUG X WIRE ___

CONTACTS:

NOTCH TYPE, SECTIONS: 1
 NON-SHORTING SECTIONS: 6
 SILVER PLATED BRASS: ___
 SILVER ALLOY: 7

WAFER MATERIAL: PHENOLIC X OTHER ___
 FINISH: COM ___, 50HR. X OR 200 HR. ___ SALT SPRAY
 OPERATING TEMPERATURE: 0°C TO 80°C
 WATER TYPE: F OR EQUIV.

ELECTRICAL

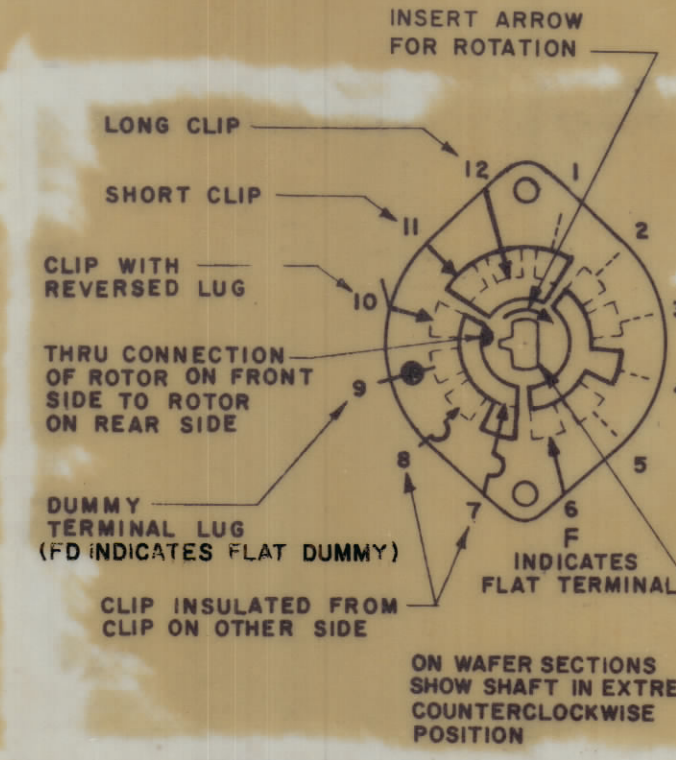
CURRENT RATING: CARRY 5 AMPS RESISTIVE MAX.
 BREAK @24 VOLTS: 2.5 AMP RESISTIVE MAX
 BREAK @115 VOLTS: .5 AMP RESISTIVE MAX
 DIELECTRIC STRENGTH: 1000V CLIP TO CLIP, 500V INSULATED CLIPS BACK TO BACK

COIL SPECIFICATIONS

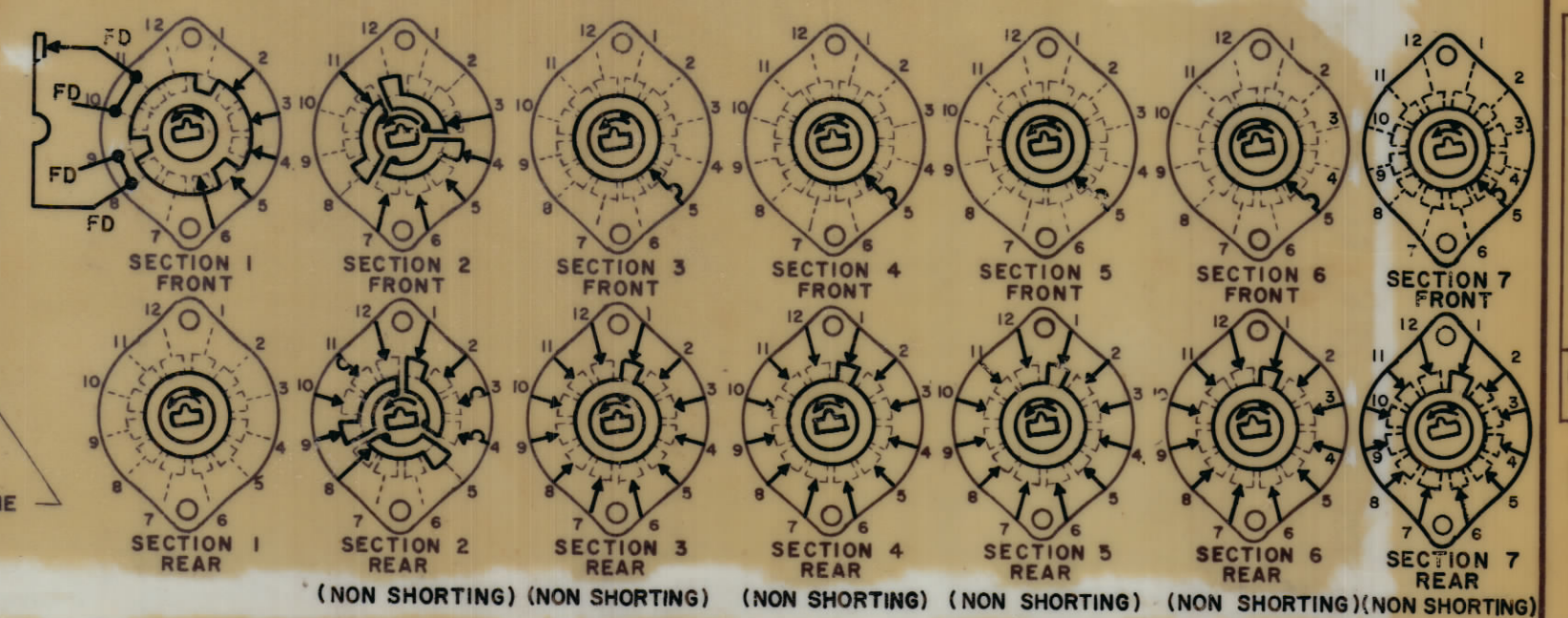
SOLENOID SIZE: 3B
 COIL RESISTANCE @20°C: 7.40 OHMS ± 10%
 VOLTAGE: 28 VDC
 GROSS STARTING TORQUE @20°C: 2.0 POUND INCHES MIN.
 DUTY CYCLE: 1/10 OR LESS
 ROTARY STROKE ANGLE: 35°
 ELECTRIC STRENGTH: ___
 DUST COVER: WITH ___ WITHOUT X

NOTES:

- VIEW WAFERS FROM SOLENOID END OF SWITCH
- REAR SIDE OF WAFER VIEWED AS IF LOOKING THROUGH WAFERS, FROM SOLENOID END.
- ORIENTATION OF WAFER IS WITH PIN 1 IN THE ONE O'CLOCK OR TWELVE O'CLOCK POSITION, ACCORDING TO ROTATION, AS VIEWED FROM THE SOLENOID END WITH SOLENOID CONNECTING WIRES OR TERMINALS FACING DOWN.
- ROTATION IS IN DIRECTION OF ARROW VIEWED FROM SOLENOID END.
- WAFERS SHOWN IN NO. 1 OR FIRST OPERATING POSITION.



FRONT AND REAR SECTIONS VIEWED FROM FRONT OR KNOB END OF SWITCH IN EXTREME COUNTERCLOCKWISE POSITION.



(NON SHORTING) (NON SHORTING) (NON SHORTING) (NON SHORTING) (NON SHORTING) (NON SHORTING) (NON SHORTING)

SYMBOLS USED IN MARKING PRINT

SWITCH, ROTARY, SOLENOID 12 POSITIONS

| | | |
|-------------|-------------------------------|-----------|
| 1 | PALA 10K | AX 5084 |
| QTY / UNIT | MODEL USED ON | ASS'Y NO. |
| APPLICATION | | |
| CODE | S 401 - 281 (176301 - 001) | |

NOTICE TO PERSONS RECEIVING THIS DRAWING
 THE TECHNICAL MATERIEL CORPORATION claims proprietary right in the material disclosed hereon. This drawing is issued in confidence for engineering information only and may not be reproduced or used to manufacture anything shown hereon without permission from THE TECHNICAL MATERIEL CORPORATION to the user. This drawing is loaned for mutual assistance and is subject to recall at any time.

| QTY. REQ. | ITEM | PART NO. | DESCRIPTION | SYMBOL |
|---|----------------|--|-------------|--------|
| F. BUDETTI LIST OF MATERIAL | | | | |
| UNLESS OTHERWISE SPECIFIED DIMENSIONS ARE IN INCHES AND INCLUDE CHEMICALLY APPLIED OR PLATED FINISHES | | FINAL APPROVAL | DATE | |
| TOLERANCES ON | | MECH. DES. | DATE | |
| DECIMALS | FRACTIONS | ELECT. DES. | DATE | |
| .X ± .05 | ± 1/64 | CHECKED | DATE | |
| .XX ± .01 | ANGLES | DRAWN | DATE | |
| .XXX ± .005 | ± 0° -30' | | | |
| MATERIAL | | THE TECHNICAL MATERIEL CORP. MAMARONECK, NEW YORK | | |
| FINISH | | REMOTE POWER | | |
| SIZE | CODE IDENT NO. | DWG NO. | ISSUE | |
| C | 82679 | SW 530 | B | |
| SCALE | | SHEET OF | | |