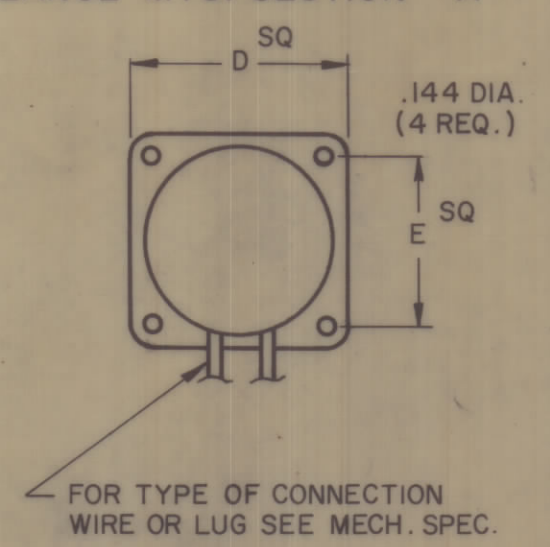


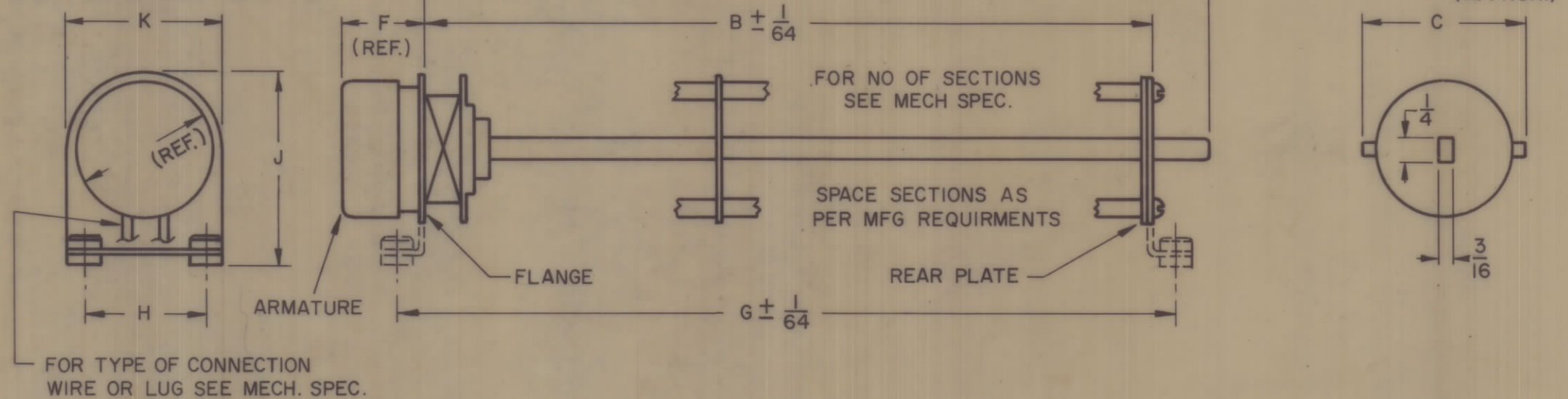
FLANGE MOUNTING SECTION "A"			FOOT MOUNTING SECTION "B"		
DESG	DIM	REMARKS	DESG	DIM	REMARKS
A	12	OVERALL SHAFT LENGTH	A		OVERALL SHAFT LENGTH
B		SHAFT LENGTH TO REAR PLATE	B		SHAFT LENGTH TO REAR PLATE
C		WIDTH CUP TO CLIP	C		WIDTH CLIP TO CUP
D	1 9/16	LENGTH & WIDTH OF FLANGE	F		DISTANCE FROM FRONT FOOT MTG. TO ARMATURE
E	1.250	HOLE MTG. OF FLANGE	H		FOOT MTG. SIDE VIEW
F	15/16	DISTANCE FROM FLANGE TO DUST COVER	J		SIDE VIEW OVERALL
			K		SIDE WIDTH OVERALL
			G		LENGTH FOOT TO FOOT

REVISIONS						DATE	APPROVED
E.M.N.NO	DRAFT	CHKD	ZONE	LTR	DESCRIPTION		

FLANGE MTG. SECTION "A"



FOOT MTG. SECTION "B"



SWITCH SPECIFICATIONS

MECHANICAL

ROTATION OF SOLENOID (VIEWED FROM SOLENOID END): CW _____ CCW X
 NO. OF SECTIONS: 3
 NO. OF POSITIONS: 12
 ANGLE OF THROW: 30°

TYPE MOUNTING: FLANGE X FOOT _____
 SOLENOID CONNECTIONS: SOLDER LUG _____ WIRE X

CONTACTS:

NOTCH TYPE, SECTIONS: _____
 NON-SHORTING SECTIONS: _____
 SILVER PLATED BRASS: _____
 SILVER ALLOY: _____
 WAFER MATERIAL: PHENOLIC _____ OTHER BAKELITE
 FINISH: COM _____, 50HR. _____ OR 200 HR. _____ SALT SPRAY
 OPERATING TEMPERATURE: _____
 WATER TYPE: F OR EQUIV.

ELECTRICAL

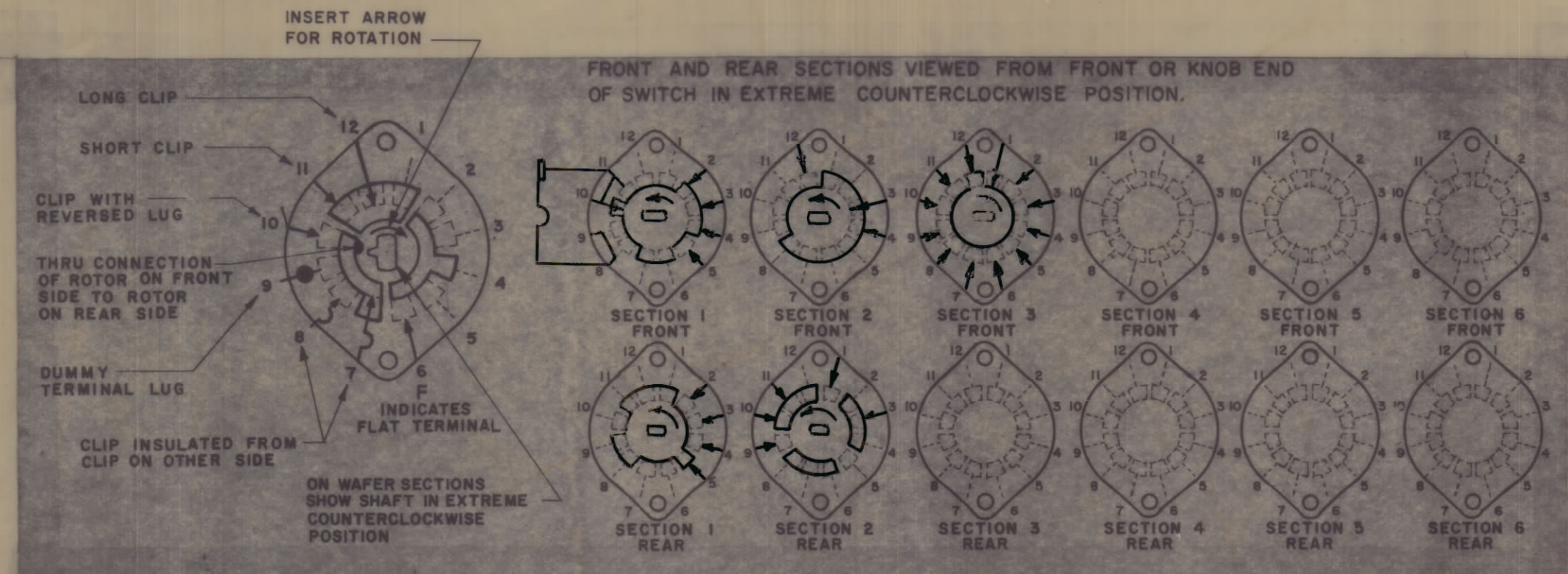
CURRENT RATING: CARRY _____ AMPS RESISTIVE MAX.
 BREAK @24 VOLTS: AMP RESISTIVE MAX
 BREAK @115 VOLTS: AMP RESISTIVE MAX
 DIELECTRIC STRENGTH: 1000V CLIP TO CLIP, 500V INSULATED CLIPS BACK TO BACK

COIL SPECIFICATIONS

SOLENOID SIZE: _____
 COIL RESISTANCE @20°C: _____
 VOLTAGE: 28VDC
 GROSS STARTING TORQUE @20°C: _____
 DUTY CYCLE: _____
 ROTARY STROKE ANGLE: _____
 ELECTRIC STRENGTH: _____
 DUST COVER: WITH X WITHOUT _____

NOTES:

- VIEW WAFERS FROM SOLENOID END OF SWITCH
- REAR SIDE OF WAFER VIEWED AS IF LOOKING THROUGH WAFERS, FROM SOLENOID END.
- ORIENTATION OF WAFER IS WITH PIN 1 IN THE ONE O'CLOCK OR TWELVE O'CLOCK POSITION, ACCORDING TO ROTATION, AS VIEWED FROM THE SOLENOID END WITH SOLENOID CONNECTING WIRES OR TERMINALS FACING DOWN.
- ROTATION IS IN DIRECTION OF ARROW VIEWED FROM SOLENOID END.
- WAFERS SHOWN IN NO. 1 OR FIRST OPERATING POSITION.



SYMBOLS USED IN MARKING PRINT

SWITCH, ROTARY, SOLENOID 12 POSITIONS

QTY / UNIT	MODEL USED ON	ASS'Y NO.
1	MFE-1	
APPLICATION		
CODE		
NOTICE TO PERSONS RECEIVING THIS DRAWING		
THE TECHNICAL MATERIEL CORPORATION claims proprietary right in the material disclosed hereon. This drawing is issued in confidence for engineering information only and may not be reproduced or used to manufacture anything shown hereon without permission from THE TECHNICAL MATERIEL CORPORATION to the user. This drawing is loaned for mutual assistance and is subject to recall at any time.		

QTY. REQ.	ITEM	PART NO.	DESCRIPTION	SYMBOL
O.P. LIST OF MATERIAL				
FINAL APPROVAL		DATE	THE TECHNICAL MATERIEL CORP. MAMARONECK, NEW YORK	
MECH. DES.		DATE		
ELECT. DES.		DATE		
CHECKED		DATE		
TOLERANCES ON		DRAWN <u>GE</u> DATE <u>12/21/71</u>		
DECIMALS		MATERIAL		
.X ± .05		FINISH		
.XX ± .01		SIZE		
.XXX ± .005		CODE IDENT NO.		
		DWG NO.		
		ISSUE		
		SCALE		
		SHEET		
		OF		

SW 544

B

A