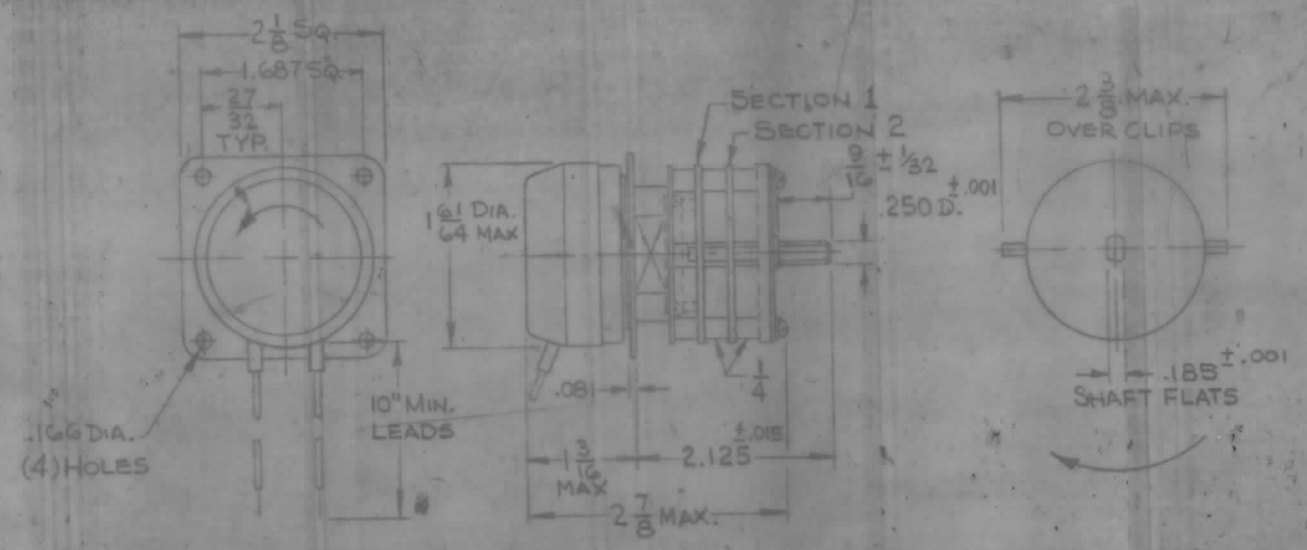


REVISIONS

SYM	DESCRIPTION	DATE	E.M.N. NO.	DRAFT	CHKD	APPD
A	ORIGINAL RELEASE FOR PRODUCTION	12/7/13		DV		
A	ON SECTION 2 FRONT Y-F INSULATOR CLIP ON TERM 1 DELETED. ADD X CLIP TO TERM. 11	1-27-76	21350	GDL	Ch	Ch

A  
SW 555



SWITCH SPECIFICATIONS

MECHANICAL

- NO. OF SECTIONS: 2
- NO. OF POSITIONS: 12
- ANGLE OF THROW: 30°
- CONTACT MATERIAL: SOLID SILVER ALLOY
- CONTACT TYPE: SECT. 1 - NOTCH HOMING; SECT 2 - NON-SHORTING
- WAFER MATERIAL: BAKELITE
- FINISH: 50 HOUR SALT SPRAY

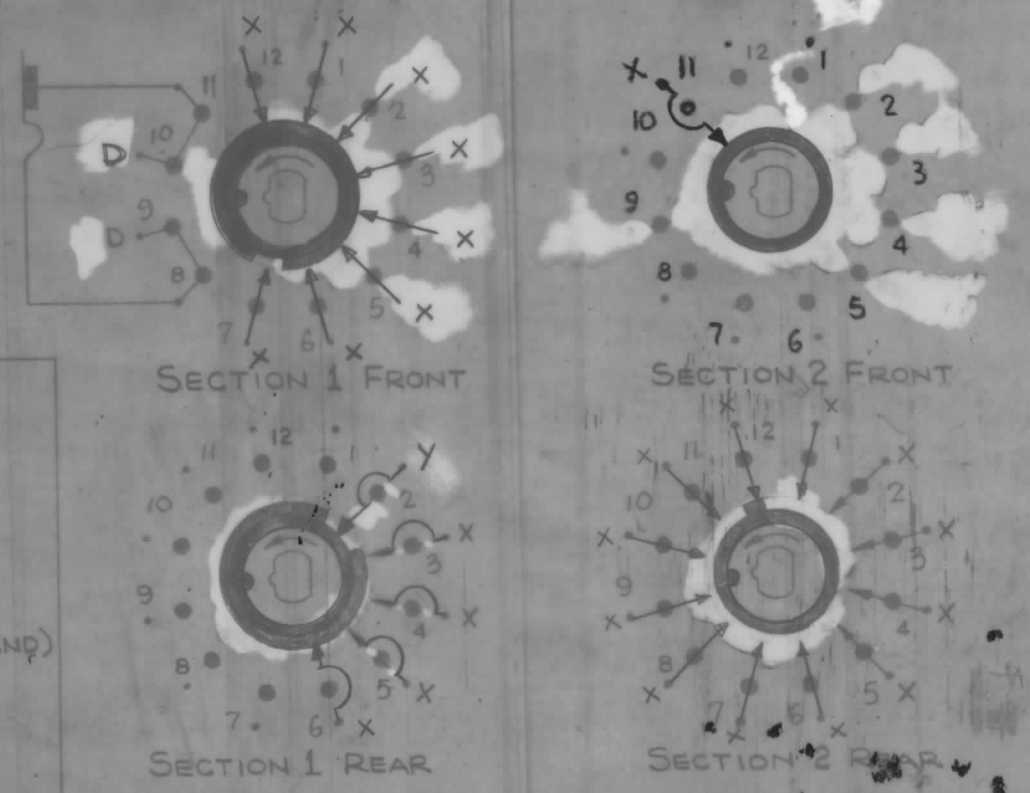
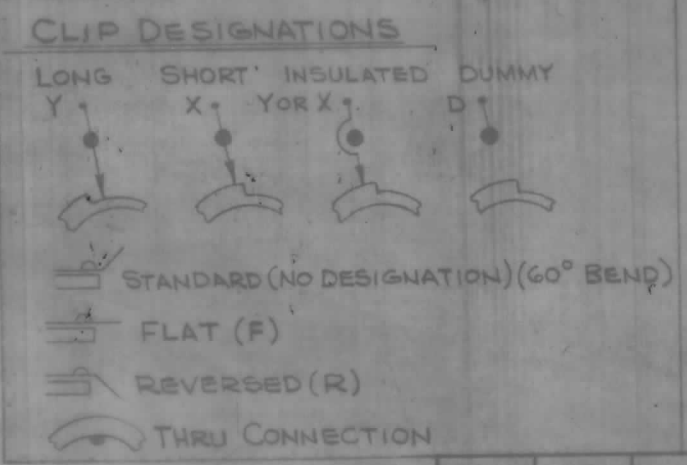
ELECTRICAL

- CURRENT RATING: CARRY: 5 TO 10 AMPS. RESISTIVE MAX.
- BREAK @ 24 VDC: 5 AMPS. RESISTIVE MAX.
- BREAK @ 115 VDC: 1 AMP. RESISTIVE MAX.
- DIELECTRIC STRENGTH: 1000V CLIP TO CLIP, 500V INSULATED
- CLIPS BACK TO BACK

COIL SPECIFICATIONS

- SOLENOID SIZE: 5S
- COIL RESISTANCE @ 20°C: 4.91 Ω ± 5%
- VOLTAGE: 28 VDC
- GROSS STARTING TORQUE FOR 1/10 DUTY CYCLE AND 35° STROKE - 6.7 POUND INCHES
- DIELECTRIC STRENGTH: 1200 VRMS

- NOTE:
1. VIEW WAFERS FROM SOLENOID END OF SWITCH.
  2. REAR SIDE IS VIEWED AS IF LOOKING THROUGH WAFER, FROM SOLENOID END.
  3. ORIENTATION OF WAFER IS WITH PIN 1 IN THE ONE O'CLOCK POSITION AS VIEWED FROM THE SOLENOID END WITH CONNECTING WIRES OR TERMINALS FACING DOWN.
  4. ROTATION IN DIRECTION OF ARROW VIEWED FROM SOLENOID END.
  5. WAFERS SHOWN IN NO. 1 POSITION.



REQ'D.	ITEM	PART NUMBER	DESCRIPTION	SYMBOL
LIST OF MATERIAL				
MATERIAL			THE TECHNICAL MATERIEL CORP. MAMARONECK, NEW YORK	
FINISH			TITLE SWITCH, ROTARY, SOLENOID	
UNLESS OTHERWISE SPECIFIED DIMENSIONS ARE IN INCHES AND INCLUDE CHEMICALLY APPLIED OR PLATED FINISHES		DRAWN	DATE	FINAL APPROVAL
		CHECKED	DATE	
		ELECT. DES.	DATE	
		MECH. DEP.	DATE	
		SW 555		A
		SHEET		REV. LTR.

1	AX5176	AX5177
QTY / UNIT	MODEL USED ON	ASSY. NO.
SCALE	CODE	5451-281
THE CONTENTS OF THIS DRAWING ARE THE EXCLUSIVE PROPERTY OF THE TECHNICAL MATERIEL CORP. ITS UNAUTHORIZED USE OR REPRODUCTION IN WHOLE OR IN PART IS STRICTLY FORBIDDEN.		

NOTES