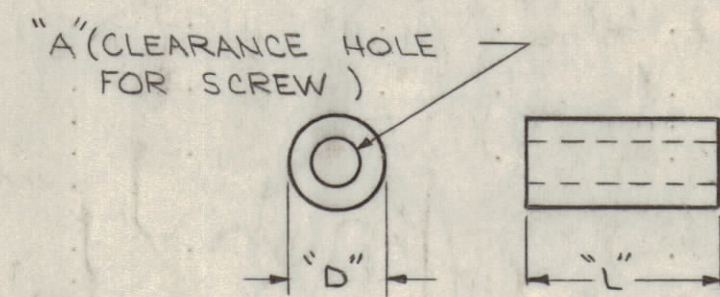


TMC P/N	MFG REF	MFG NUMBER	LENGTH "L"	DIA "D"	CLEARANCE "A"	MATERIAL	FINISH
TE117-1	1	4143	1/4	1/4	6	BRASS	S135 NICKEL PLATE
-2	1	4144	3/8	1/4	6		
-3	1	4145	1/2	1/4	6		
-4	1	4147	3/4	1/4	6		
-5	1	4149	1	1/4	6		
-6	1	4026	1/4	1/4	8		
-7	1	4027	3/8	1/4	8		
-8	1	4028	1/2	1/4	8		
-9	1	4030	3/4	1/4	8		
-10	1	4032	1	1/4	8		
-11	1	4157	1/4	3/8	6		
-12	1	4158	3/8	3/8	6		
-13	1	4159	1/2	3/8	6		
-14	1	4161	3/4	3/8	6		
-15	1	4163	1	3/8	6		
-16	1	4047	1/4	3/8	8		
-17	1	4048	3/8	3/8	8		
-18	1	4049	1/2	3/8	8		
-19	1	4051	3/4	3/8	8		
-20	1	4053	1	3/8	8		
-21			3/16	3/16	4		
-22			1/8	1/4	8		
-23			1.375	3/8	8		
-24			11/16	3/8	6		
-25			5/32	3/8	6		
-26			1/8	3/8	6		
-27			1 1/4	3/16	4		
-28	1	4137	1/4	3/16	4		
-29			9/16	1/2	6		
-30			5/16	1/4	6		
-31			1/2	1/4	4		
-32			15/16	3/16	4		
-33	1	4138	3/8	3/16	4		
-34			1	3/4	8		
-35	1	4146	5/8	1/4	4		
-36			5/8	3/16	4		
-37			1/4	3/8	10		
-38			7/16	1/4	10		
-39			3/32	3/8	10		
-40			5/8	3/16	10		
-41	OBS USE -33		3/8	3/16	4		
-42			9/16	5/16	6		
-43			7/16	5/16	6		
-44			.578 ± .002	.312 ± .010	.169		
-45			.437 ± .002	.312 ± .010	.169		
-46			5/32	1/4	6		
-47	9284-B-194		1/8	5/16	10		
-48			5/32	1/4	4	BRASS	S135 NICKEL PLATE
-49			1/2	3/4	9/32	ALUMINUM	S245 SIL PL S423 SILKOTE
-50			.375 ± .002	5/16	.169	BRASS	S135 NICKEL PLATE
-51			.218	.375	.250		
-52			.437	.375	.250		
-53			5/32	5/16	6		
-54			3/16	1/4	2		
-55			1/16	.190	2		
-56			15/32	5/32	.113		
-57			5/16	7/32	8		
-58			5/16	1/4	13/64		
-59			9/32	3/16	4		
-60			1/8	3/16	.128 ± .005		
-61			.9400	.375	1/4		
-62			7/16	.156	.113		
-63			1/2	3/8	10		
-64			7/16	3/8	10	BRASS	S135 NICKEL PLATE
* -65			.250 ± .002	.312 ± .005	.250 ± .005	303 STAINLESS STEEL	S104 CLEAR PASSIVATE
* -66	2	B8-8	.031 ± .002	.375 ± .005	.250 ± .005		
* -67	2	B8-10	.094 ± .002	.375 ± .005	.250 ± .005		
* -68	2	B8-13	.250 ± .002	.375 ± .005	.250 ± .005		
* -69			.240 ± .000	.375 ± .005	.257 ± .005		
-70			.156 ± .002	.375 ± .005	.250 ± .005	303 STAINLESS STEEL	S104 CLEAR PASSIVATE
-71			3/4	3/16	4	BRASS	S135 NICKEL PLATE
-72			.187 ± .002	3/8	.250 ± .005	303 STAINLESS STEEL	S104 CLEAR PASSIVATE
-73			3/8	1/2	11/64	TEFLON (TFE)	
-74			1	1/2	11/64	G10	
-75			1/2	1/4	.125 ± .002	303 STAINLESS STEEL	S104 CLEAR PASSIVATE
-76			.208	5/8	.314 ± .002	303 STAINLESS STEEL	S104 CLEAR PASSIVATE
-77			1/8	7/16	.187	303 STAINLESS STEEL	S104 CLEAR PASSIVATE
-78			11/16	5/16	8	BRASS	S135 NICKEL PLATE
-79			7/8	1/4	6	BRASS	S135 NICKEL PLATE
-80			1/4	.260 ± .005	#68 DRILL	TEFLON (TFE)	
-81			.363 ± .000	3/8	.252 ± .002	303 STAINLESS STEEL	S104 CLEAR PASSIVATE
-82			.051 ± .000	3/8	.252 ± .002		
-83			.066 ± .000	3/8	.252 ± .002		
-84			.010 ± .000	3/8	.252 ± .002		
-85			.144 ± .000	5/16	.252 ± .002		
-86			.307 ± .000	5/16	.252 ± .002	303 STAINLESS STEEL	S104 CLEAR PASSIVATE
-87			5/32	3/16	.116	BRASS	S135 NICKEL PLATE
-88			1.312 ± .005	3/8	11/64	BRASS	S135 NICKEL PLATE
-89			1.218 ± .005	3/8	11/64	BRASS	S135 NICKEL PLATE
-90			.1875 ± .005	.625 ± .001	.312 ± .005	ALUMINUM	S404 YELLOW IRIDITE
-91			15/16	1/4	6	BRASS	S135 NICKEL PLATE
-92		9202-A-091	1/4	1/8	.091	ALUM	S404 YELLOW IRIDITE
-93			1/4	1/4	4	BRASS	S135 NICKEL PLATE
-94			7/32	1/4	6	BRASS	S135 NICKEL PLATE

TMC P/H	MFG REF	MFG NUMBER	LENGTH "L"	DIA "D"	CLEARANCE "A"	MATERIAL	FINISH
TE117-95			.937 ± .002	.500	.203	ALUMINUM	S404 YELLOW IRIDITE
-96			.500 ± .002	.375	.156	ALUMINUM	S404 YELLOW IRIDITE
-97			.339 ± .002	5/8	.502 ± .005	ALUMINUM	S404 YELLOW IRIDITE
-98			1/2	3/4	7/16	ALUMINUM	S404 YELLOW IRIDITE

REVISIONS						
ZONE	LTR	DESCRIPTION	DATE	E.M.N. NO.	DRAFT	CHKD
	AU	REDRAWN FROM 2 SIZE ADDED	1-9-67	17582	RME	
	AV	-B1 TO -B7	7-21-67	18377	WHD	
	AW	TE117-88 & TE117-89 ADDED	1-16-68	18724	WHD	
	AY	ADD. 92, 93 & 94	1-31-69	19276	9E	
	AZ	TE117-95, 96 ADDED	9/7/69	19553	CV	
	BA	TE117-97 ADDED	9/22/70	19892	CV	
	BB	TE117-98 ADDED	12-5-70	21857	GDL	



* NOTE:
NO CHAMFER OR COUNTERSINK
ON A HOLES OR END SURFACES.
(BOTH ENDS)

QTY / UNIT	MODEL USED ON	ASSY NO.
APPLICATION		
CODE	S401-89	
	S401-350	

UNLESS OTHERWISE SPECIFIED
DIMENSIONS ARE IN INCHES
AND INCLUDE CHEMICALLY APPLIED
OR PLATED FINISHES

TOLERANCES ON

DECIMALS	FRACTIONS
X ± .05	± 1/64
XX ± .01	ANGLES
XXX ± .005	± 0°-30'

MATERIAL SEE CHART

FINISH SEE CHART

QTY. REQ.	ITEM	PART NO.	DESCRIPTION	SYMBOL
LIST OF MATERIAL				
THE TECHNICAL MATERIEL CORP. MAMARONECK, NEW YORK				
SPACER				
SIZE			CODE IDENT. NO.	DWG. NO.
D 82679			TE 117	BB
SCALE			SHEET	OF

STANDARD DRAWING

NOTICE TO PERSONS RECEIVING THIS DRAWING
THE TECHNICAL MATERIEL CORPORATION claims proprietary right in the material disclosed hereon.
This drawing is issued in confidence for engineering information only and may not be reproduced or used
to manufacture anything shown hereon without permission from THE TECHNICAL MATERIEL CORPORATION
to the user. This drawing is loaned for mutual assistance and is subject to recall at any time.