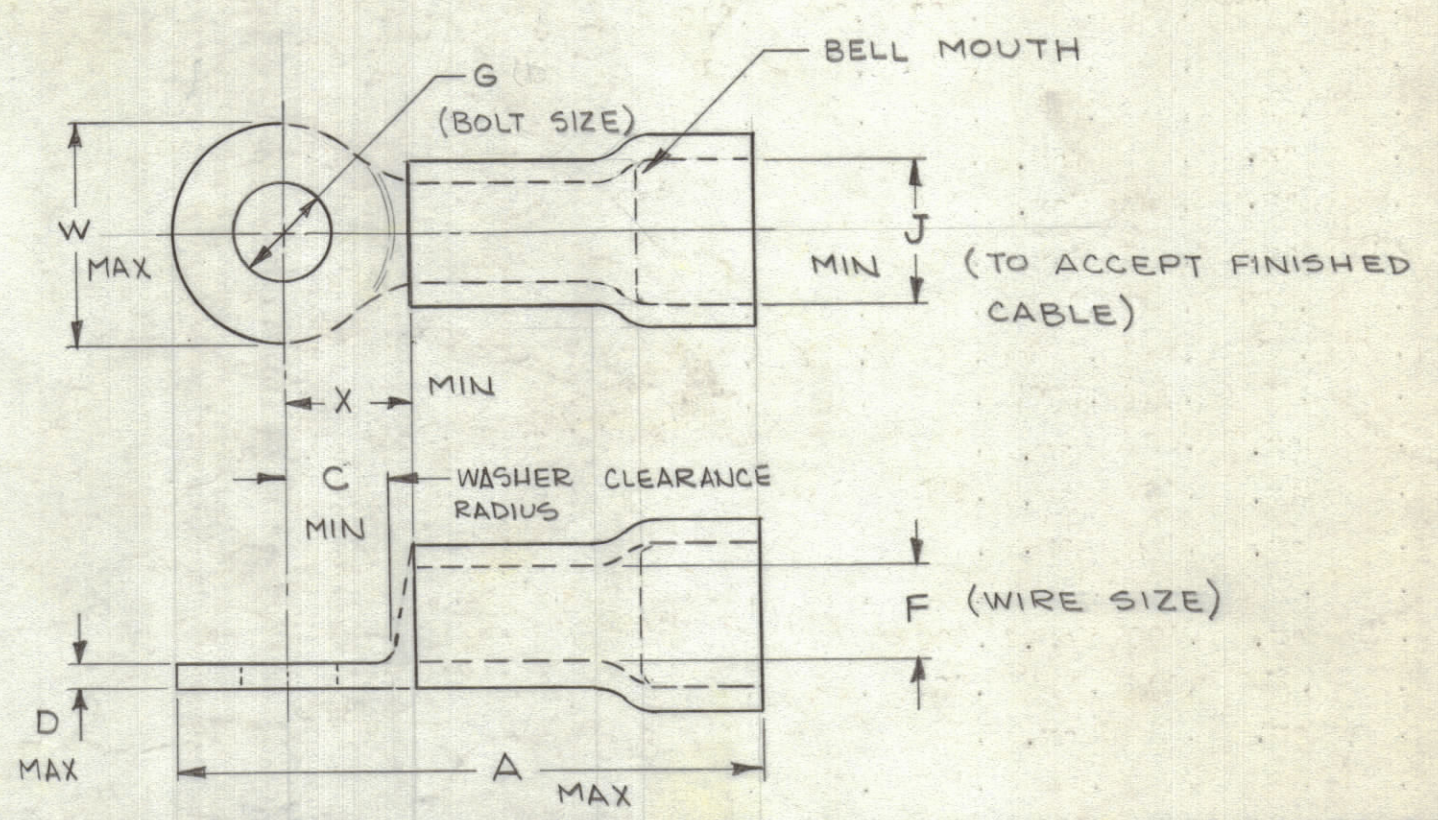


TMC PART NUMBER	MFG. NO.	MIL STD. DWG. MS25036	WIRE SIZE (F)	"G" BOLT SIZE	"A" MAX.	"W"	"D"	"C" MIN.	"X" MIN	"J" MIN	COLOR CODE
TE-197-8-10	RD9361	-15	#8	#10	1.562	.375-.483	.038-.079	.247	.343	.257	RED
TE-197-8-25	RD9711	-16		1/4	1.578	.440-.568	.038-.079	.289	.375	.257	
TE-197-8-31	RD9721	-17		5/16	1.703	.531-.594	.038-.079	.302	.406	.257	
TE-197-8-37	RD9731	-18		3/8	1.703	.536-.598	.038-.079	.328	.437	.257	
TE-197-8-43	RD9741			7/16	1.770	.83 Max.	.047 Max.	.450			
TE-197-8-50	RD9751		1/2	1.770	.83 Max.	.047 Max.	.450				
TE-197-6-10	RE9261	-19	#6	#10	1.718	.406-.530	.043-.079	.270	.375	.310	BLUE
TE-197-6-25	RE9711	-20		1/4	1.859	.438-.562	.043-.079	.286	.375	.310	
TE-197-6-31	RE9721	-21		5/16	1.906	.563-.687	.043-.079	.349	.437	.310	
TE-197-6-37	RE9731	-22		3/8	1.906	.563-.687	.043-.079	.349	.437	.310	
TE-197-6-43	RE9741			7/16	1.816	.83 Max.	.052 Max.	.450			
TE-197-6-50	RE9751		1/2	1.816	.83 Max.	.052 Max.	.450				
TE-197-4-10	RF9261		#4	#10	1.528	.49 Max.	.067 Max.	.280			YELLOW
TE-197-4-25	RF9711	-23		1/4	1.906	.438-.562	.047-.106	.286	.375	.370	
TE-197-4-31	RF9721	-24		5/16	1.968	.563-.687	.047-.106	.349	.437	.370	
TE-197-4-37	RF9731	-25		3/8	1.968	.563-.687	.047-.106	.349	.437	.370	
TE-197-4-43	RF9741			7/16	1.879	.83 Max.	.067 Max.	.450			
TE-197-4-50	RF9751		1/2	1.879	.83 Max.	.067 Max.	.450				
TE-197-2-10	RG9261		#2	#10	2.069	.69 Max.	.120 Max.	.400			RED
TE-197-2-25	RG9711	-26		1/4	2.140	.563-.718	.054-.114	.364	.375	.453	
TE-197-2-31	RG9721			5/16	2.069	.69 Max.	.120 Max.	.400			
TE-197-2-37	RG9731	-27		3/8	2.263	.594-.718	.054-.114	.364	.437	.453	
TE-197-2-43	RG9741			7/16	2.269	.80 Max.	.110 Max.	.490			
TE-197-2-50	RG9751	-28	1/2	2.388	.750-.874	.054-.114	.453	.625	.453		
TE-197-1-25	RH9711	-29	#1	1/4	2.484	.607-.786	.070-.130	.398	.437	.500	CLEAR TO WHITE
TE-197-1-31	RH9721			5/16	2.150	.77 Max.	.130 Max.	.430			
TE-197-1-37	RH9731	-30		3/8	2.484	.607-.786	.070-.130	.398	.500	.500	
TE-197-1-43	RH9741			7/16	2.370	.77 Max.	.130 Max.	.540			
TE-197-1-50	RH9751	-31		1/2	2.515	.732-.892	.070-.130	.455	.625	.500	
TE-197-0-25	RJ9711	-32	1/0	1/4	2.484	.625-.875	.070-.130	.443	.437	.550	BLUE
TE-197-0-31	RJ9721			5/16	2.357	.83 Max.	.130 Max.	.460			
TE-197-0-37	RJ9731	-33		3/8	2.514	.740-.884	.070-.130	.447	.500	.550	
TE-197-0-43	RJ9741			7/16	2.500	.89 Max.	.130 Max.	.550			
TE-197-0-50	RJ9751	-34		1/2	2.638	.860-.900	.070-.130	.455	.625	.550	
TE-197-20-25	RK9711		2/0	1/4	2.609	.93 Max.	.130 Max.	.550			YELLOW
TE-197-20-31	RK9721	-35		5/16	2.530	.746-.953	.075-.130	.482	.485	.610	
TE-197-20-37	RK9731	-36		3/8	2.624	.746-.953	.075-.130	.482	.500	.610	
TE-197-20-43	RK9741			7/16	2.679	.93 Max.	.130 Max.	.550			
TE-197-20-50	RK9751	-37		1/2	2.748	.869-.953	.075-.130	.482	.625	.610	
TE-197-30-25	RL9711		3/0	1/4	2.840	1.04 Max.	.140 Max.	.570			RED
TE-197-30-31	RL9721			5/16	2.840	1.04 Max.	.140 Max.	.570			
TE-197-30-37	RL9731	-38		3/8	2.894	.812-1.062	.085-.145	.536	.540	.680	
TE-197-30-43	RL9741			7/16	2.840	1.04 Max.	.140 Max.	.570			
TE-197-30-50	RL9751	-39		1/2	2.894	.866-1.062	.085-.145	.536	.625	.680	
TE-197-40-25	RM9711		#4/0	1/4	2.891	1.13 Max.	.140 Max.	.620			BLUE
TE-197-40-31	RM9721			5/16	2.891	1.13 Max.	.140 Max.	.620			
TE-197-40-37	RM9731	-40		3/8	3.016	.875-1.125	.095-.145	.568	.573	.750	
TE-197-40-43	RM9741			7/16	2.993	1.12 Max.	.140 Max.	.660			
TE-197-40-50	RM9751	-41		1/2	3.016	.875-1.125	.095-.145	.568	.625	.750	

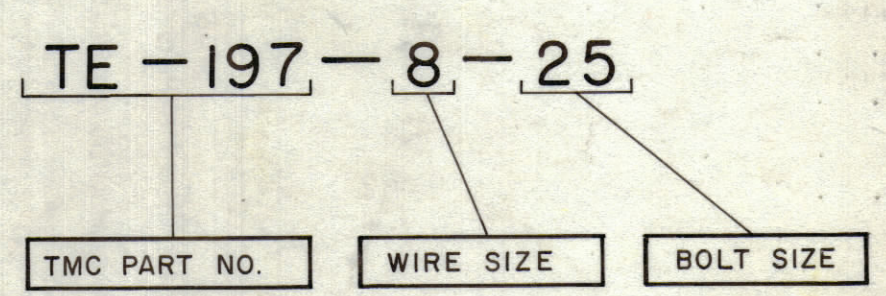
REVISIONS						
ZONE	SYM	DESCRIPTION	DATE	E.M.N. NO.	DRAFT	CHKD
#	A	REDRAWN WITH CHANGES	12/27/63	10646		



MATERIAL - COPPER TERMINAL, NYLON INSULATION  
 FINISH - ELECTRO-TIN  
 INSTALLING TOOLS REQUIRED ( IF NECESSARY )  
 MIL STD CRIMPING TOOL- MS25441-1  
 MFG CRIMPING TOOL - 13642M  
 MIL STD DIES - MS23002  
 MFG DIES - 2170M THRU 21715M

- NOTE:
- TERMINALS SHALL BE MANUFACTURED IN ACCORDANCE WITH MIL-T-7928 AND DRAWING MS25036D WITH REVISIONS.
  - ALL BURRS AND SHARP EDGES SHALL BE REMOVED.
  - CONTOUR INDICATED BY DOTTED LINES MAY VARY FROM THAT SHOWN TO SUIT INDIVIDUAL MFG'S DESIGN.
  - CABLE INSERTION SHALL BE FACILITATED BY BELL MOUTH.

TMC PART NO. SHALL BE IN THE FOLLOWING FORM:



REQ'D.	ITEM	PART NUMBER	DESCRIPTION	SYMBOL
LIST OF MATERIAL				
MATERIAL			THE TECHNICAL MATERIEL CORP. MAMARONECK, NEW YORK	
SEE NOTES			TITLE TERMINAL, LUG, INSULATED	
FINISH			DRAWN G. Jancar	
SEE NOTES			DATE 12-24-63	
UNLESS OTHERWISE SPECIFIED DIMENSIONS ARE IN INCHES AND INCLUDE CHEMICALLY APPLIED OR PLATED FINISHES			FINAL APPROVAL BP	
DECIMALS .X ± .05 .XX ± .01 .XXX ± .005			DATE TE-197	
TOLERANCES			DATE	
FRACTIONS ± 1/64 ANGLES ± 0° 30'			DATE	
			SHEET	
			REV. LTR.	

STANDARD DRAWING		
QTY./UNIT	MODEL USED ON	ASS'Y. NO.
SCALE	CODE	
THE CONTENTS OF THIS DRAWING ARE THE EXCLUSIVE PROPERTY OF THE TECHNICAL MATERIEL CORP. ITS UNAUTHORIZED USE OR REPRODUCTION IN WHOLE OR IN PART IS STRICTLY FORBIDDEN.		

S401-35 MIL (AS-52776)  
 NON MIL (AS-51769)

NOTES