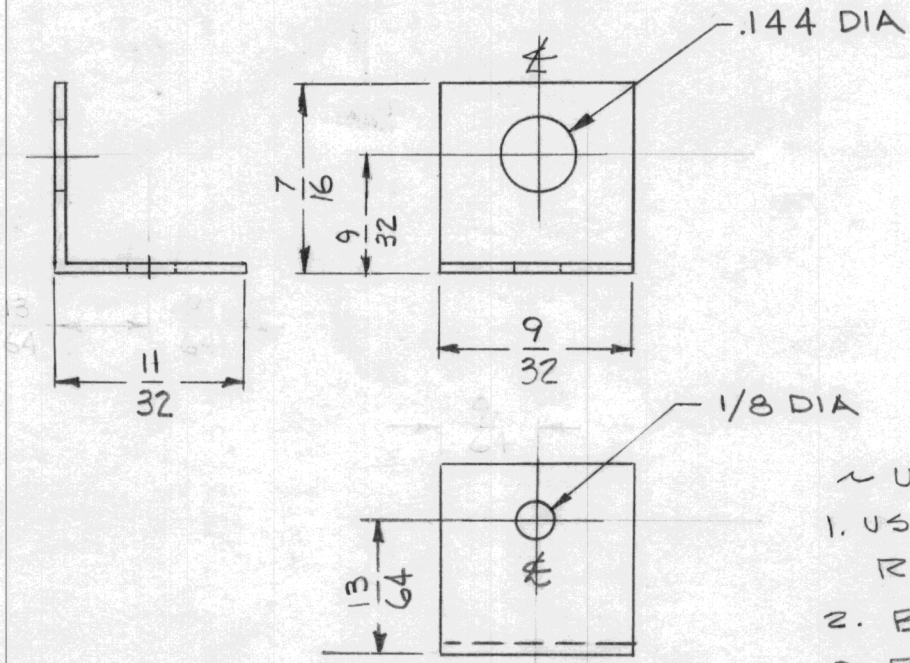


REQ. PER UNIT	USED ON			TE-200
	MODEL	ASS'Y. NO.	DATE	
1	TTR-10	A-3278	9-10-63	



- ~ UNLESS OTHERWISE SPECIFIED ~
1. USE MAT'L THICKNESS FOR MAX. RADIUS ON BEND.
  2. BEND 90°
  3. REMOVE ALL BURRS & SHARP EDGES.

REQ.	ITEM	PART NO.	KOHN DESCRIPTION E3037		SYMBOL					
		.032 THK	THE TECHNICAL MATERIEL CORP.							
		STOCK SIZE	MAMARONECK. NEW YORK							
		BRASS	BRACKET, ANGLE							
SYM	DESCRIPTION	DATE	CH. NO.	DRAFTS	CHECKER	ENG. APP.	MATERIAL			
UNLESS OTHERWISE SPECIFIED DIMENSIONS ARE IN INCHES AND INCLUDE CHEMICALLY APPLIED OR PLATED FINISHES		SCALE		NONE		1/2 HARD		9.10.63	JO	BP
DECIMALS .X ± .05 .XX ± .01 .XXX ± .005		FRACTIONS ± 1/64 ANGLES ± 0° 30'		CODE	S401-243	PART # 246	S105 BRIGHT CADIUM PLATE	RKOHN	RKOHN	TE-200
TOLERANCES							FINISH & SPEC. NO.	ELEC. DES. APP.	MECH. DES. APP.	