

IF IT IS FOUND DESIRABLE TO CHANGE ANY TOLERANCE OR OTHER DETAIL SPECIFIED ON THIS DRAWING NOTIFY THE PURCHASER PROMPTLY.		DIMENSIONS IN INCHES UNLESS OTHERWISE SPECIFIED					
MAXIMUM ALLOWABLE TOLERANCES HAVE BEEN DETERMINED AND DEVIATIONS WILL BE CAUSE FOR REJECTION. REMOVE ALL BURRS AND SHARP EDGES.							
ISSUE	ITEM	CHANGED FROM	DATE	CN. NO.	DRAFTS	CHECKER	ENG. APP.
A		TERM NO ADDED TO SCHEMATIC	13-1-66		RD		
B		ELECT SPECS. REVISED	8-7-66	DREVO	GM		

REQ.	ITEM	PART NO.	DESCRIPTION	SYMBOL
------	------	----------	-------------	--------

ELECTRICAL SPECIFICATIONS

PRIMARY - TWO WINDINGS, NUMBERED AS SHOWN ON SCHEMATIC, TO BE CONNECTED IN PARALLEL FOR 115V, 50/400CPS SINGLE PHASE INPUT & SERIES FOR 230V, 50/400CPS SINGLE PHASE INPUT.

SECONDARY - THREE WINDINGS, NUMBERED AS SHOWN ON SCHEMATIC. WINDINGS TO PROVIDE, AT FULL LOAD:

- 350 VAC AT 75 MA DC C.T.
- 28 VAC AT 1.5 AMP DC C.T.
- 6.4 VAC AT 1.0 AMP

AN ELECTROSTATIC SHIELD SHALL BE INCORPORATED. HEAT RISE - MAX TEMPERATURE, FULLY LOADED, + 40°C.

MECHANICAL SPECIFICATIONS

CASE - HERMETICALLY SEALED IN RECTANGULAR STEEL CASE.

TERMINALS - 1/2" LONG O/A, SOLDER LUGS AND CERAMIC BUSHINGS SHALL BE USED.

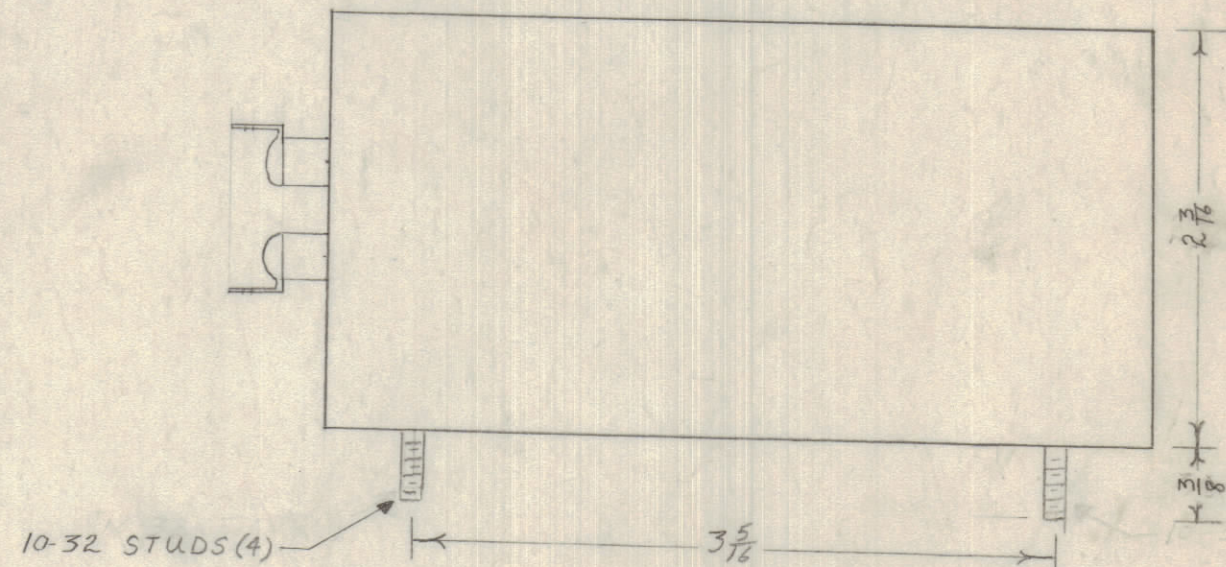
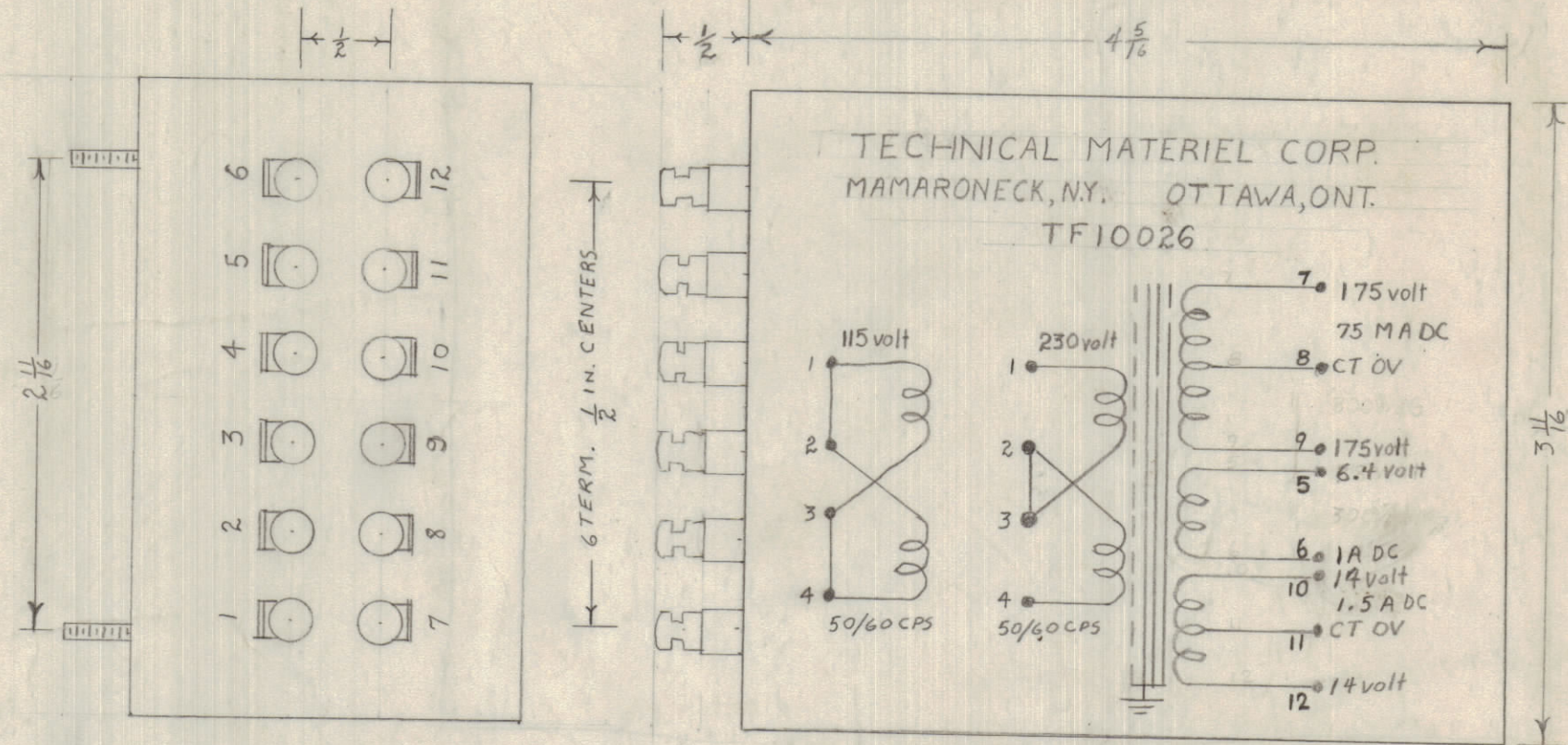
MOUNTING STUDS - 10-32 THD. x 3/8" LONG.

FINISH - S115, TMC SMOOTH GREY ENAMEL (EXCEPT STUD END).

STAMPING - TERMINALS SHALL BE STAMPED 1-12 AS SHOWN. SCHEMATIC DIAGRAM TO BE PLACED AS SHOWN. BLACK LINEWORK AND LETTERING. LETTERING 1/8 AND 3/32 GOTHIC.

NOTE

MANUFACTURED IN ACCORDANCE WITH MIL SPEC T-27A, EXCEPT MIL SPEC T-27A SHALL NOT APPEAR ON CASE. NO QUALIFICATION TESTING IS REQUIRED.



TF10026 B

S 401-30 Ref. BTC 6895

TOLERANCES		SCALE
ALL OTHERS	DEC. DIM. ± FRAC. DIM. ± 1/64 ANGULAR DIM. ±	DRIILL, PUNCH, COMMERCIAL STOCK SIZES AND MANUFACTURERS TOLERANCES ARE NOT INCLUDED.

AMC20-16	020/65	A10376	10-14-65
MODEL	PROJECT NO.	ASSY. NO.	DATE
USED ON			

STOCK SIZE		TMC (Canada) LIMITED OTTAWA ONTARIO	
MATERIAL		TRANSFORMER, POWER	
WEIGHT PER PC.			
TYPE & TEMPER		DRAWN: [Signature] ELEC. DES. APP. [Signature] MECH. DES. APP. [Signature]	
HEAT TREAT. SPEC.		CHECKED: [Signature] FINAL APPROVAL: [Signature]	
FINISH & SPEC. NO.		TF10026 B	