

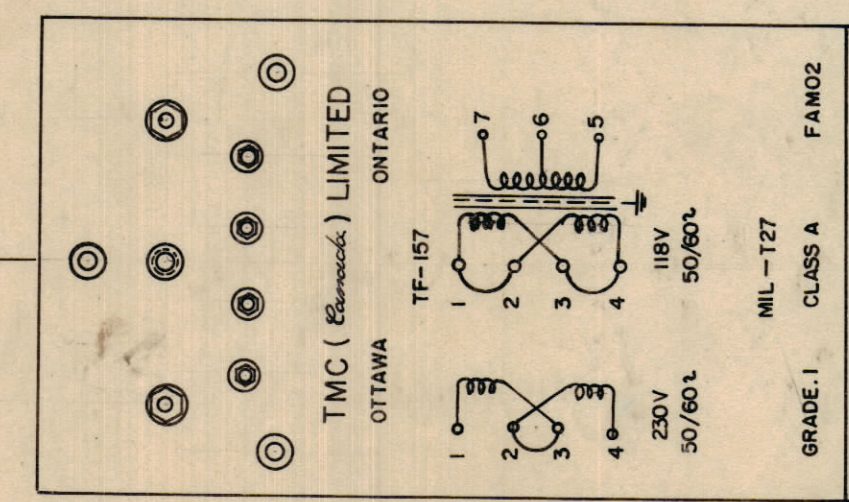
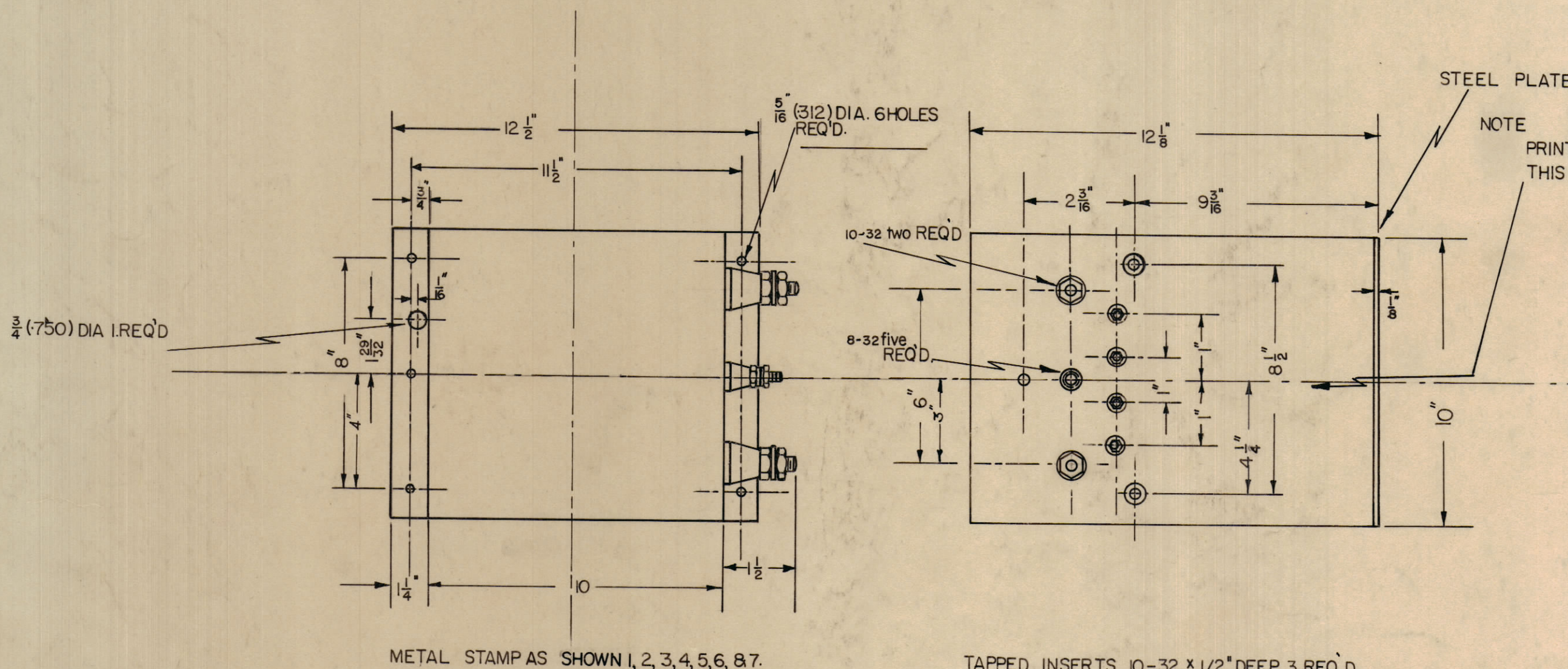
IF IT IS FOUND DESIRABLE TO CHANGE ANY TOLERANCE OR OTHER DETAIL SPECIFIED ON THIS DRAWING NOTIFY THE PURCHASER PROMPTLY.

MAXIMUM ALLOWABLE TOLERANCES HAVE BEEN DETERMINED AND DEVIATIONS WILL BE CAUSE FOR REJECTION. REMOVE ALL BURRS AND SHARP EDGES

NOTICE TO PERSONS RECEIVING THIS DRAWING

THE TECHNICAL MATERIEL CORPORATION claims proprietary right in the material disclosed hereon. This drawing is issued in confidence for engineering information only and may not be reproduced or used to manufacture anything shown hereon without permission from THE TECHNICAL MATERIEL CORPORATION to the user. This drawing is loaned for mutual assistance and is subject to recall at any time.

Property of:
THE TECHNICAL MATERIEL CORPORATION
MAMARONECK, NEW YORK



SHEMATIC DIAGRAM TO BE PRINTED IN WHITE AS SHOWN.

METAL STAMP AS SHOWN 1, 2, 3, 4, 5, 6, 8, 7.

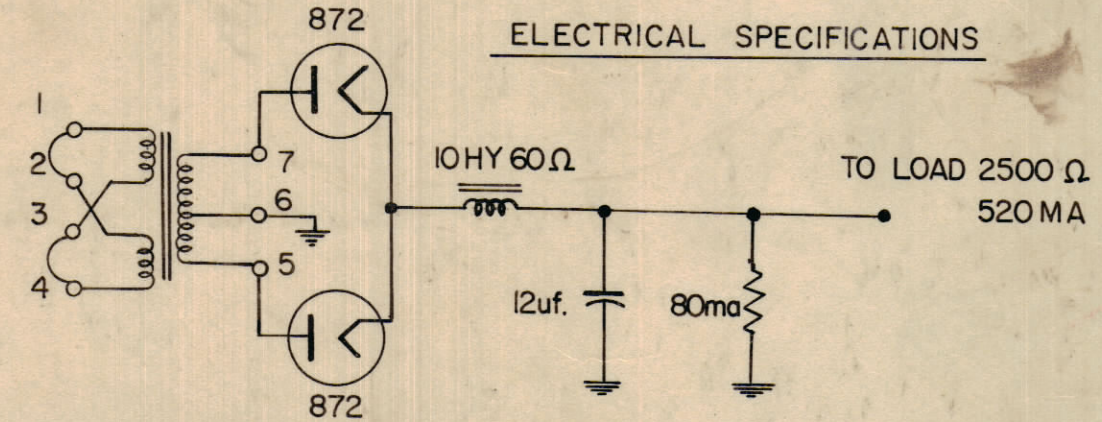
TAPPED INSERTS 10-32 x 1/2" DEEP 3 REQ D.

MECHANICAL SPECIFICATIONS

CASE - STEEL, HERMETICALLY SEALED, RECTANGULAR
 COLOR - TMC SMOOTH GRAY (S-115)
 INSERTS - 10-32 x 1/2" DEEP.
 SIZE 10 x 10 x 12 1/8" EXCLUSIVE OF TERMINALS
 AND MOUNTING PLATE LIPS

UNIT TO BE IN ACCORDANCE WITH MIL-T-27 GR.1, CL.A
 FAM-02

ELECTRICAL SPECIFICATIONS



TRANSFORMER TO BE USED IN CIRCUIT AS ABOVE
 PRIMARY - 115/230 VAC, 50/60 CPS.
 SECONDARY - 2500V, 600MA AGROSS LOAD.
 ELECTROSTATIC SHIELD SHALL BE INSERTED (FOIL).

TRAC. TMC/NY.

ISSUE	ITEM	CHANGED FROM	DATE	CN. NO.	DRAFTS	CHECKER	ENG. APP.
TOLERANCES							
ALL OTHERS				DEC. DIM. ± FRAC. DIM. ± ANGULAR DIM. ±			
SCALE:				DRILL, PUNCH, COMMERCIAL STOCK SIZES AND MANUFACTURERS TOLERANCES ARE NOT INCLUDED.			

MODEL	PROJECT No.	ASS'Y. No.	DATE
			28 Apr 58

REQ.	ITEM	PART No.	DESCRIPTION	SYMBOL
			TMC (Canada) LIMITED OTTAWA ONTARIO	
			TRANSFORMER, PLATE POWER GPT-750	
			MATERIAL WEIGHT PER PC.	
			TYPE & TEMPER	
			HEAT TREAT. SPEC.	
			FINISH & SPEC. No.	
			DRAWN	ELEC. DES. APP. MECH. DES. APP.
			CHECKED	FINAL APPROVAL
				TF-157 C

A TF-157