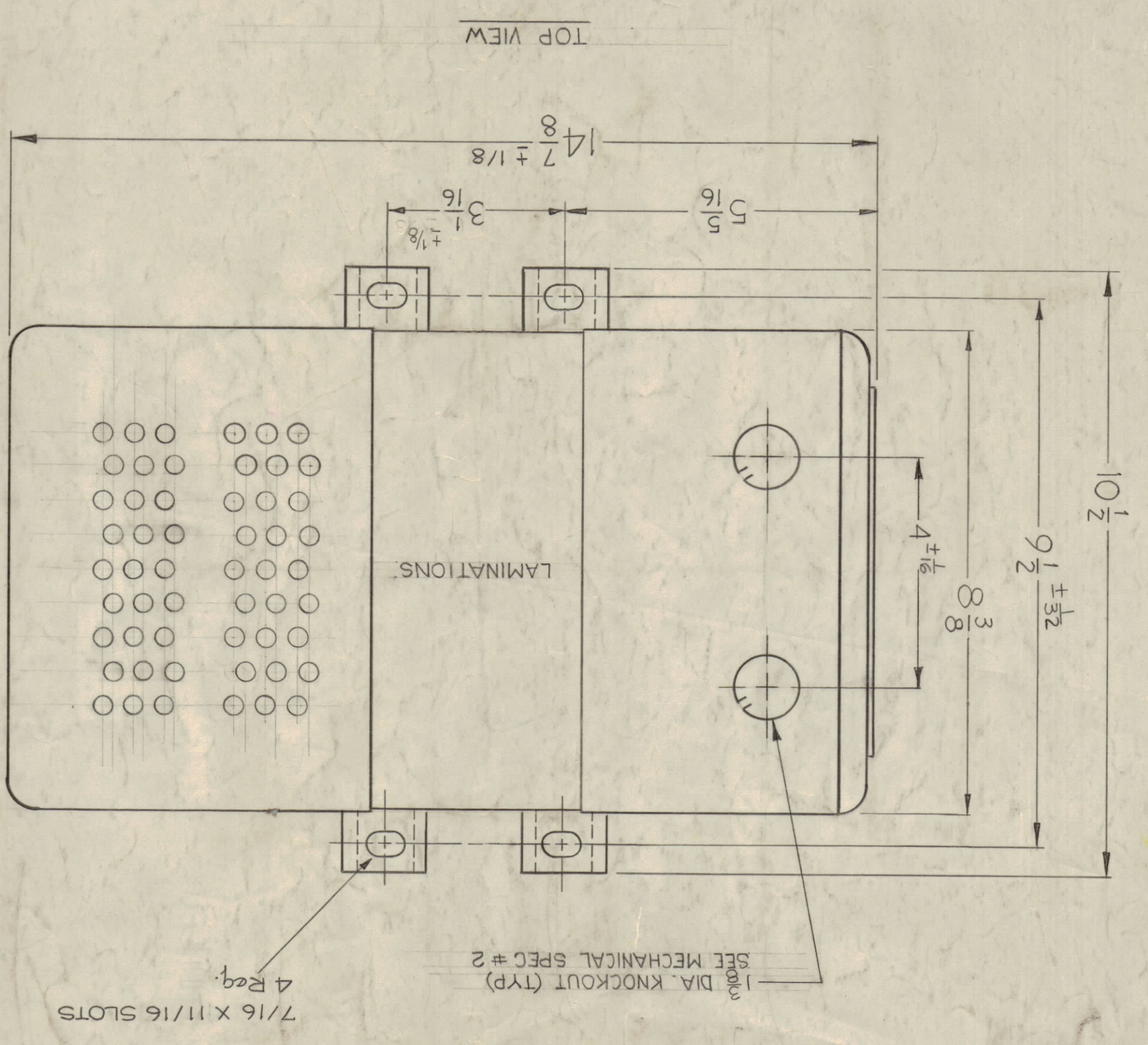
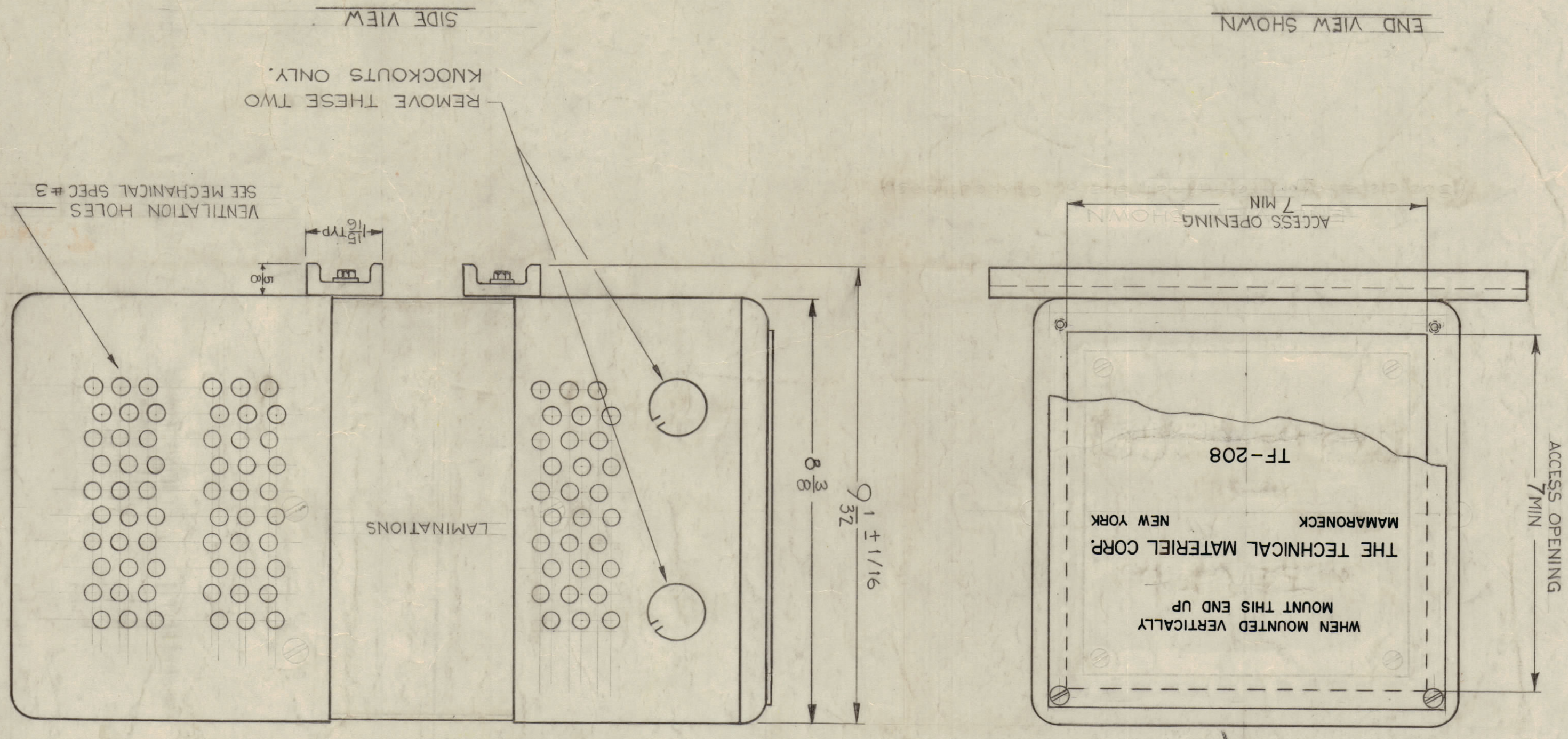
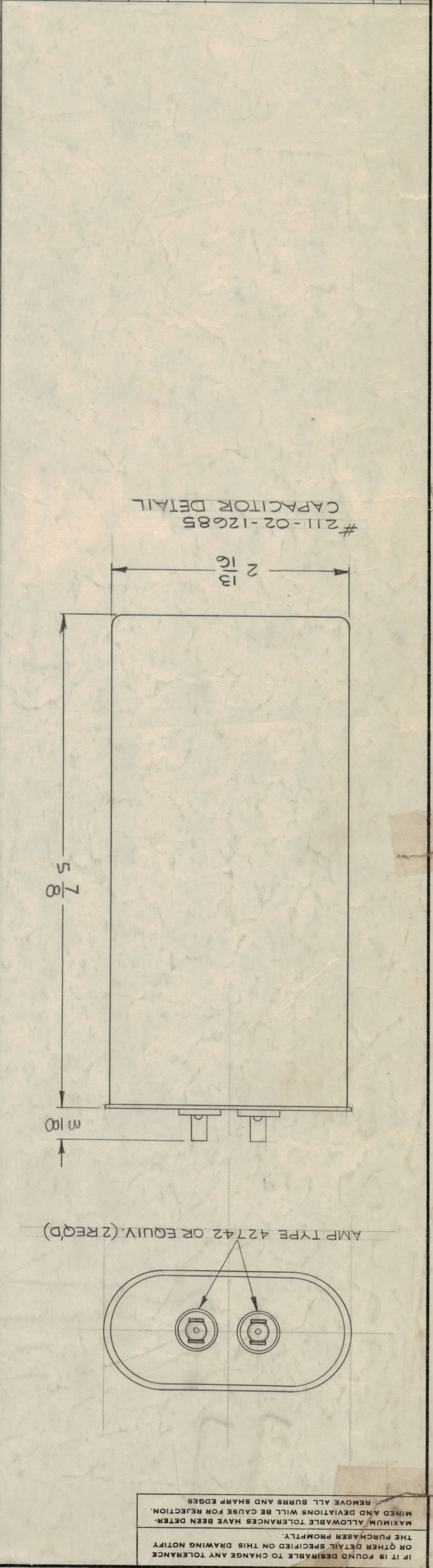


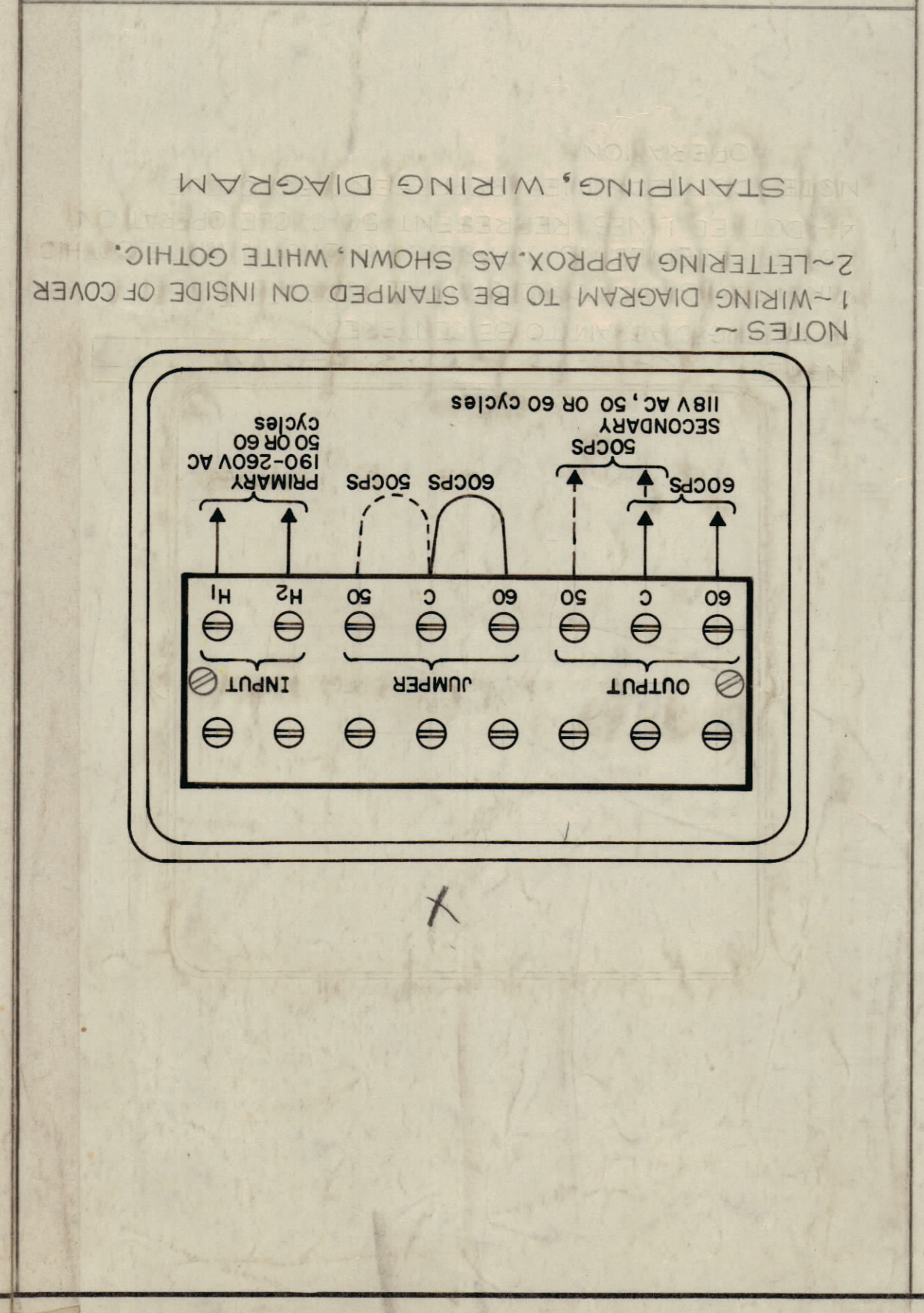
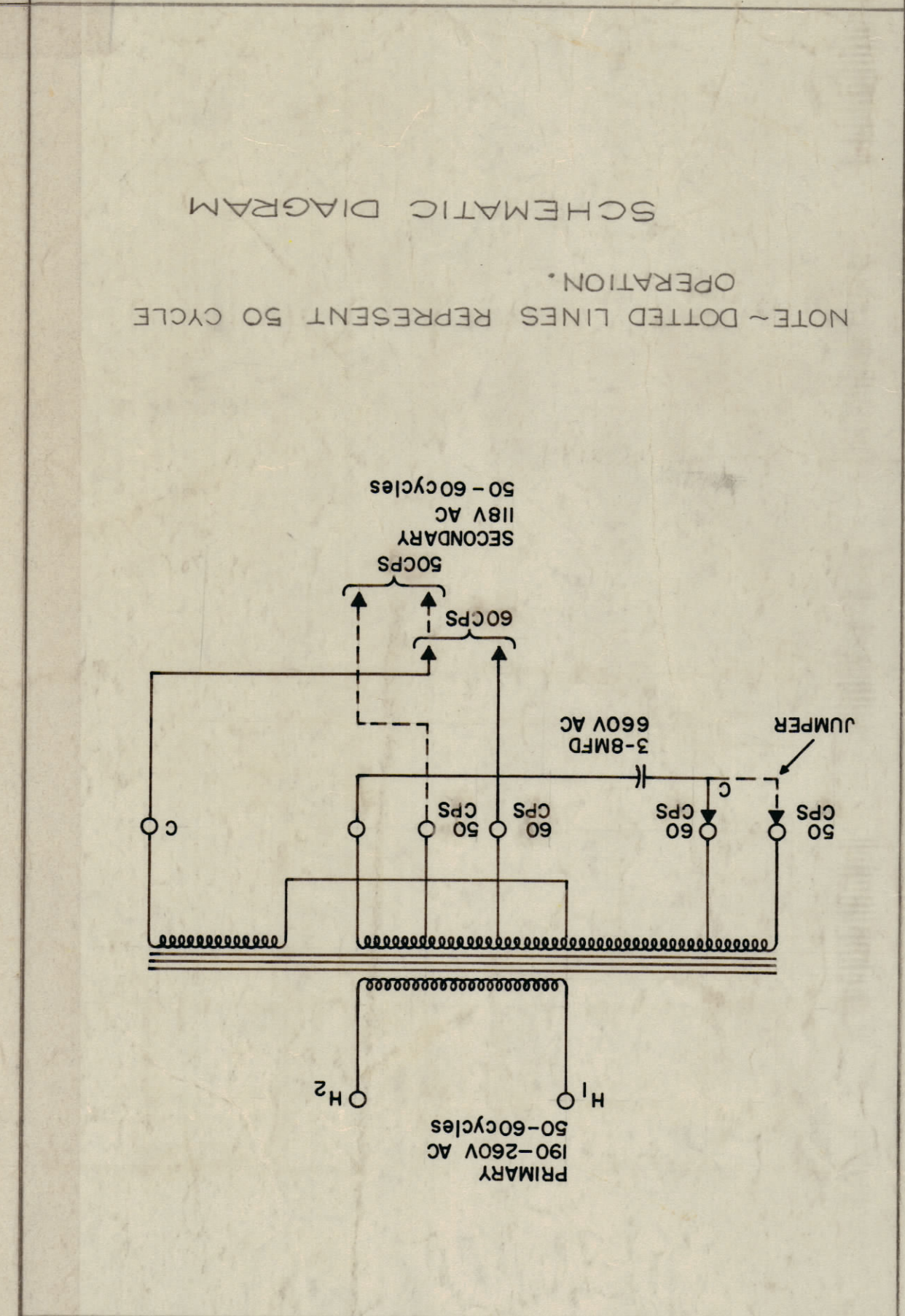
ISSUE	ITEM	CHANGED FROM	DATE	BY	CN. NO. DRAWING CHECKER	ENG. APP.
E	2	ADDED CAPACITOR DETAIL.	10/40	MB		
D	1	ADDED MECH SPEC # 8	10/40	MB		
C	3	DIMS & PROTECT. CHANGED	8/20	MB		
B	2	INT. MECH SPECS REVISED & REWRITTEN	8/20	MB		
A	1	ON ELECTRICAL SPEC	5/60	MB		

TOLERANCES
 DRILL, PUNCH AND MANUFACTURING STOCK
 SCALE: 5-401-86 (22374)
 ANGULAR DIM. ± 1/64
 OTHERS



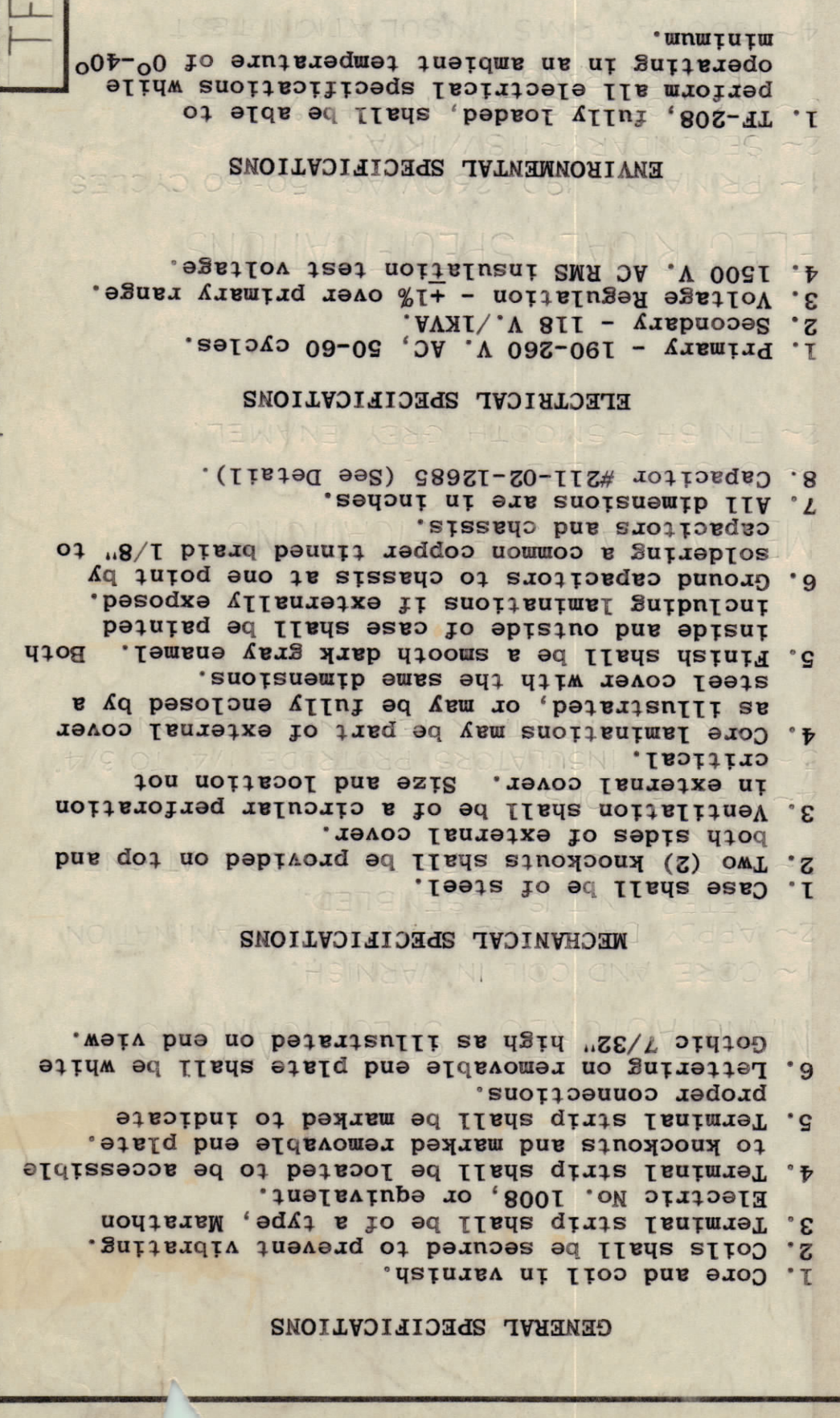
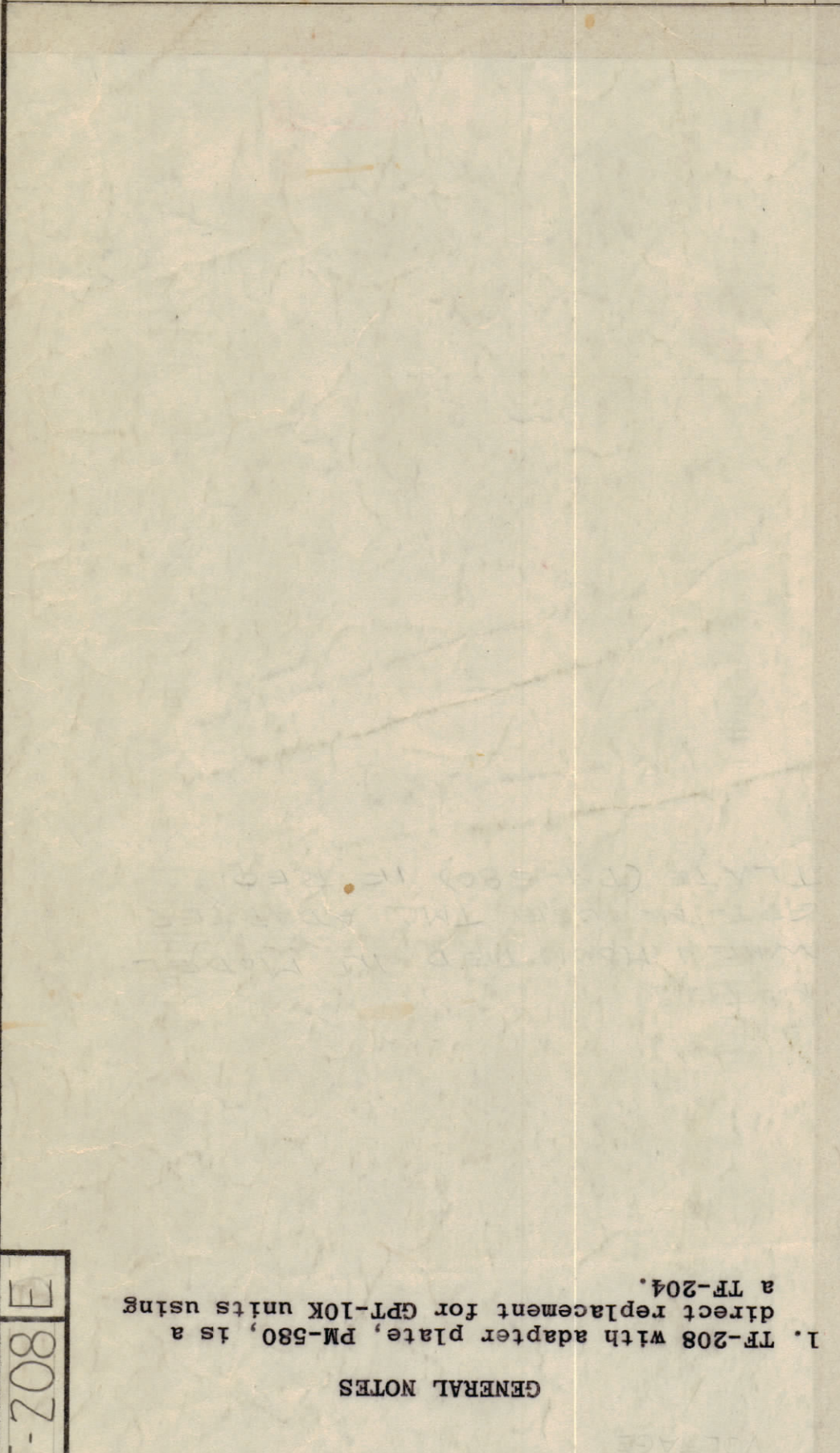
REV	DESCRIPTION	DATE
1	AX-180	9-3-59

USED ON
 PROJECT NO. GPT-10K
 ASSY. NO.
 FINISH & SPEC. NO.



REV	DESCRIPTION	DATE
1	AX-180	9-3-59

USED ON
 PROJECT NO. GPT-10K
 ASSY. NO.
 FINISH & SPEC. NO.



GENERAL SPECIFICATIONS
 1. Core and coil in varnish.
 2. Coils shall be secured to prevent vibration.
 3. Terminal strip shall be of a type, Marathon Electric No. 1008, or equivalent.
 4. Terminal strip shall be located to be accessible to knockouts and marked removable end plate.
 5. Terminal strip shall be marked to indicate proper connections.
 6. Lettering on removable end plate shall be white gothic 1/32" high as illustrated on end view.

MECHANICAL SPECIFICATIONS
 1. Case shall be of steel.
 2. Two (2) knockouts shall be provided on top and both sides of external cover.
 3. Ventilation shall be of a circular perforation in external cover. Size and location not critical.
 4. Core laminations may be part of external cover as illustrated, or may be fully enclosed by a steel cover with the same dimensions.
 5. Finish shall be a smooth dark gray enamel. Both inside and outside of case shall be painted including laminations if externally exposed.
 6. Ground capacitors to chassis at one point by soldering a common copper tinned braid 1/8" to capacitors and chassis.
 7. All dimensions are in inches.
 8. Capacitor #211-02-12885 (See Detail).

ELECTRICAL SPECIFICATIONS
 1. Primary - 190-260 V. AC, 50-60 cycles.
 2. Secondary - 118 V./1KVA,
 3. Voltage Regulation - +1% over primary range.
 4. 1500 V. AC RMS insulation test voltage.

ENVIRONMENTAL SPECIFICATIONS
 1. TF-208, fully loaded, shall be able to perform all electrical specifications while operating in an ambient temperature of 0°-40° minimum.
 GENERAL NOTES
 1. TF-208 with adapter plate, PM-580, is a direct replacement for GPT-10K units using a TF-204.

TF-208E

TF-208E