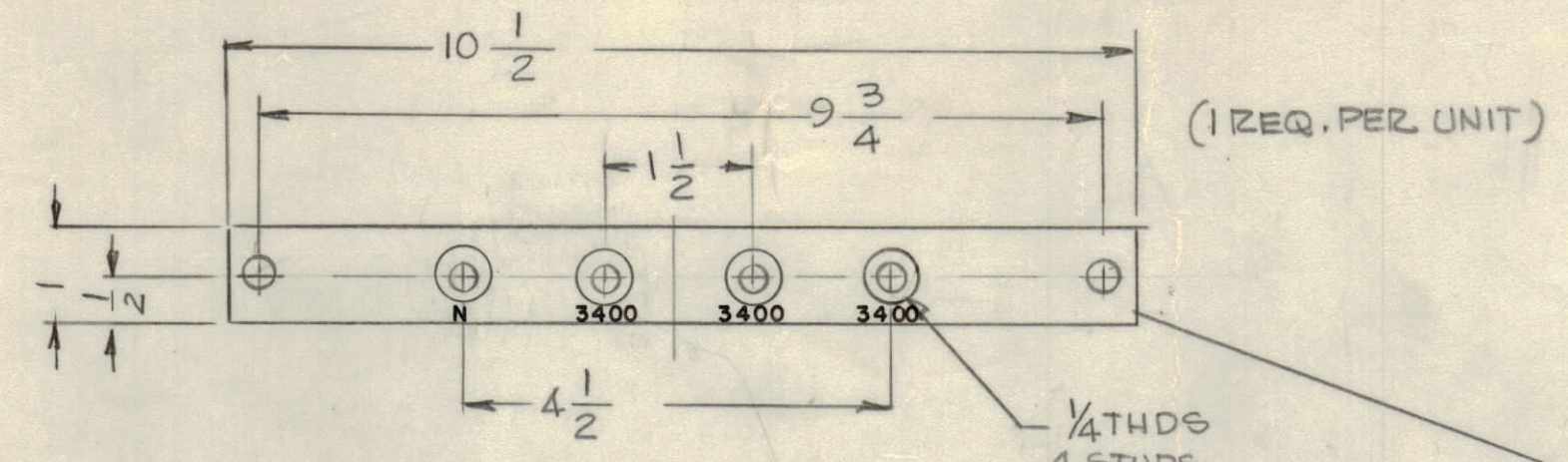
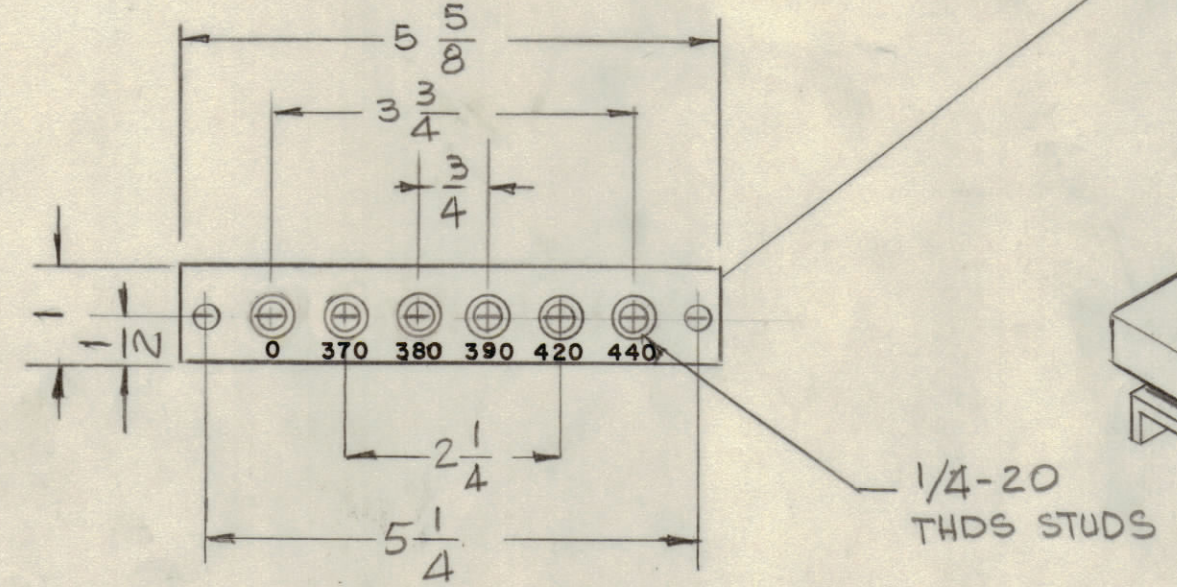


REVISIONS					DATE	APPROVED
E.M.N.O.	DRAFT	CHKD	ZONE	LTR	DESCRIPTION	
					ORIGINAL RELEASE FOR PRODUCTION	



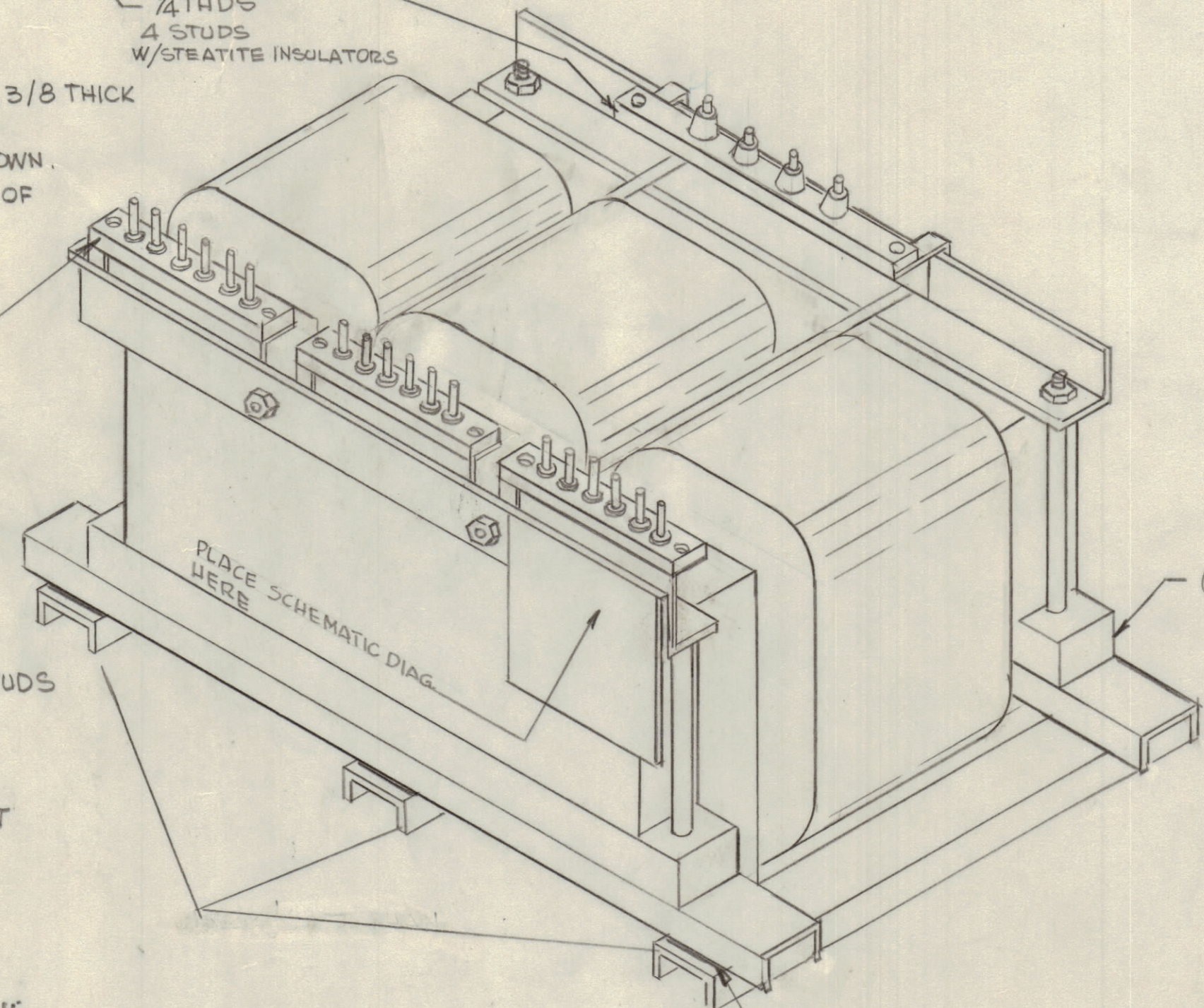
TERMINAL BOARD MATERIAL: BLACK PHENOLIC LINEN BASE, 3/8 THICK

LETTERING: 1/8 HIGH WHITE GOTHIC AS SHOWN.
NOTE: FOR SPARE PARTS REPLACEMENT OF THIS TERMINAL BD USE TMC DWG TM 125



REQ. 3 PER UNIT

NOTE: FOR SPARE PARTS REPLACEMENT OF THIS TERMINAL BD USE TMC DWG NO TM 122

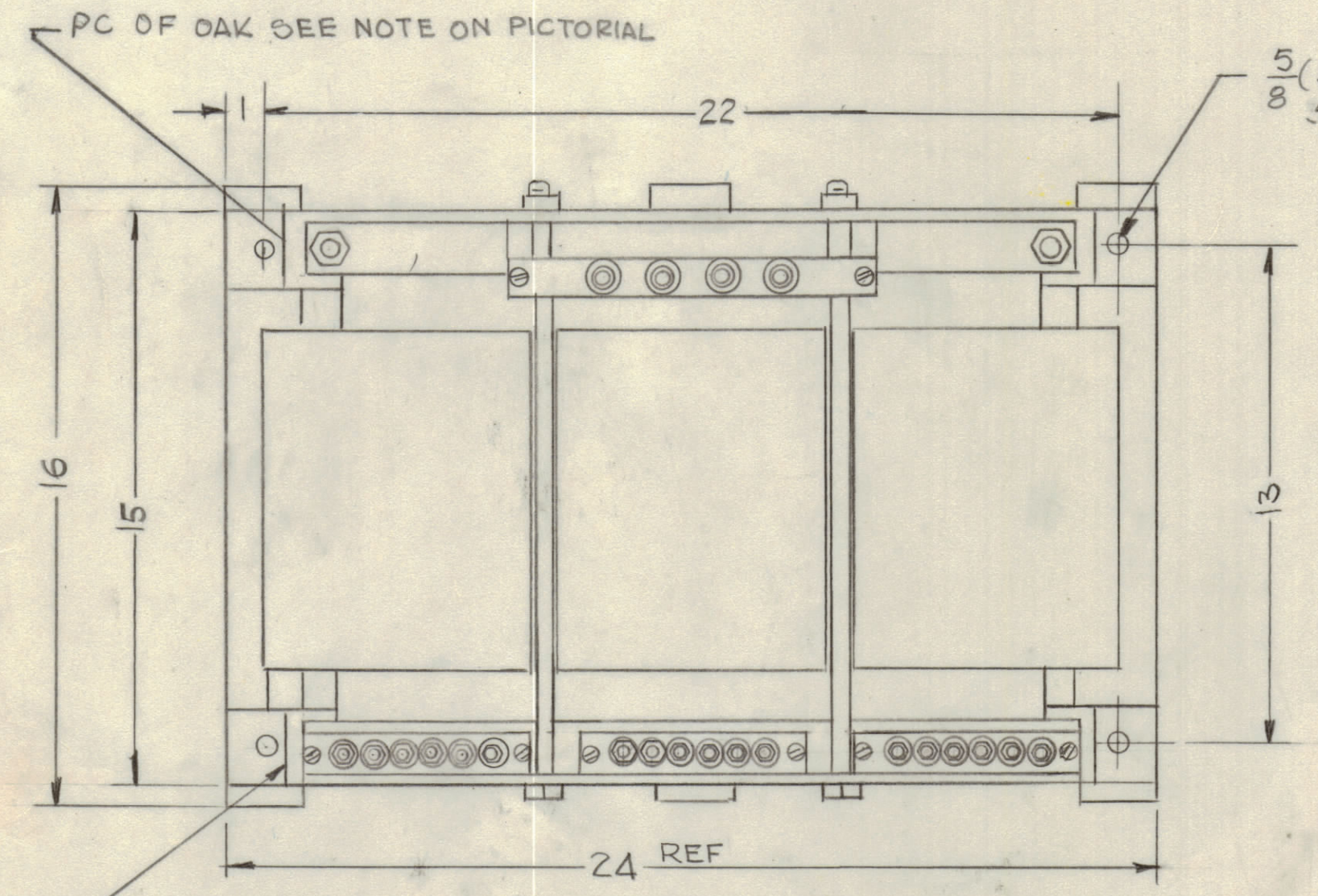


(2) 2x2 1/2 x 20 REF. PC OF OAK STUDDING SILICONE VARNISH & PAINTED SEE FINISH NOTE

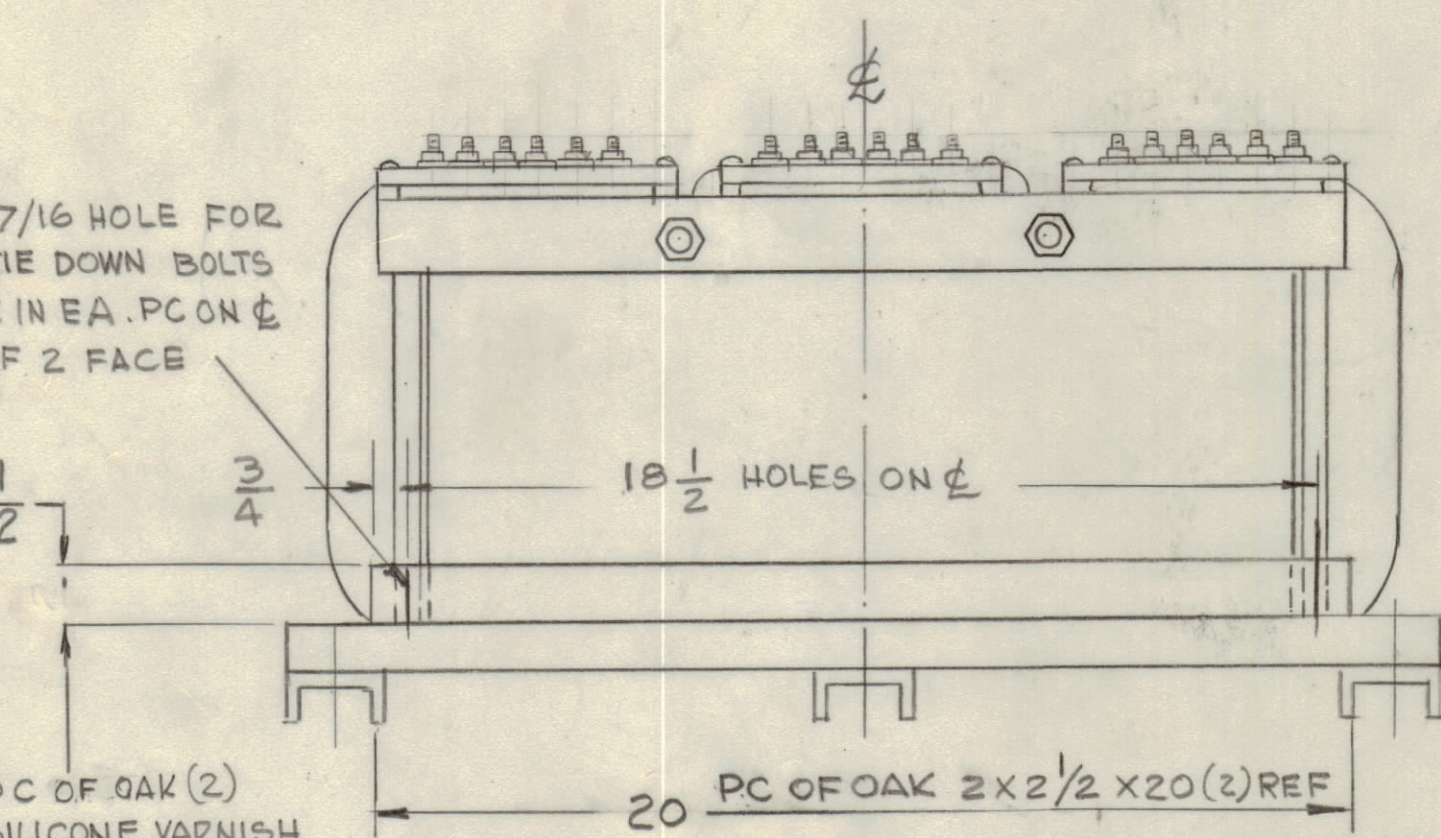
ELECTRICAL SPECIFICATIONS
PRIMARY: 370, 380, 390, 420, 440 VAC (DELTA) 50/60 CPS, THREE PHASE
NOTE: TRANSFORMER SHALL PRODUCE 7.5KVDC AT 3 AMPS (MAX.)
SECONDARY: 3400 VAC EACH LEG.
(WYE) THE SECONDARY NEUTRAL POINT SHALL DELIVER 3750 VDC AT 0.5 AMPS, WITH CIRCUIT AS SHOWN IN SCHEMATIC

TEST VOLTAGES - AS PER MIL-T-27A
INSULATION - AS PER MIL-T-27A
MECHANICAL SPECIFICATIONS:
CONSTRUCTION - OPEN FRAME TYPE WITH "U" CHANNELS & ANGLES AS SHOWN
FINISH - TMC SMOOTH GREY ENAMEL (S115) EXCEPT TERMINAL STRIPS & TERMINALS.

NOTE: MANUFACTURED IN ACCORDANCE WITH MIL-T-27A EXCEPT THAT MIL SPEC. T27-A SHALL APPEAR ON CASE AN QUALIFICATION TESTING IS NOT REQUIRED.

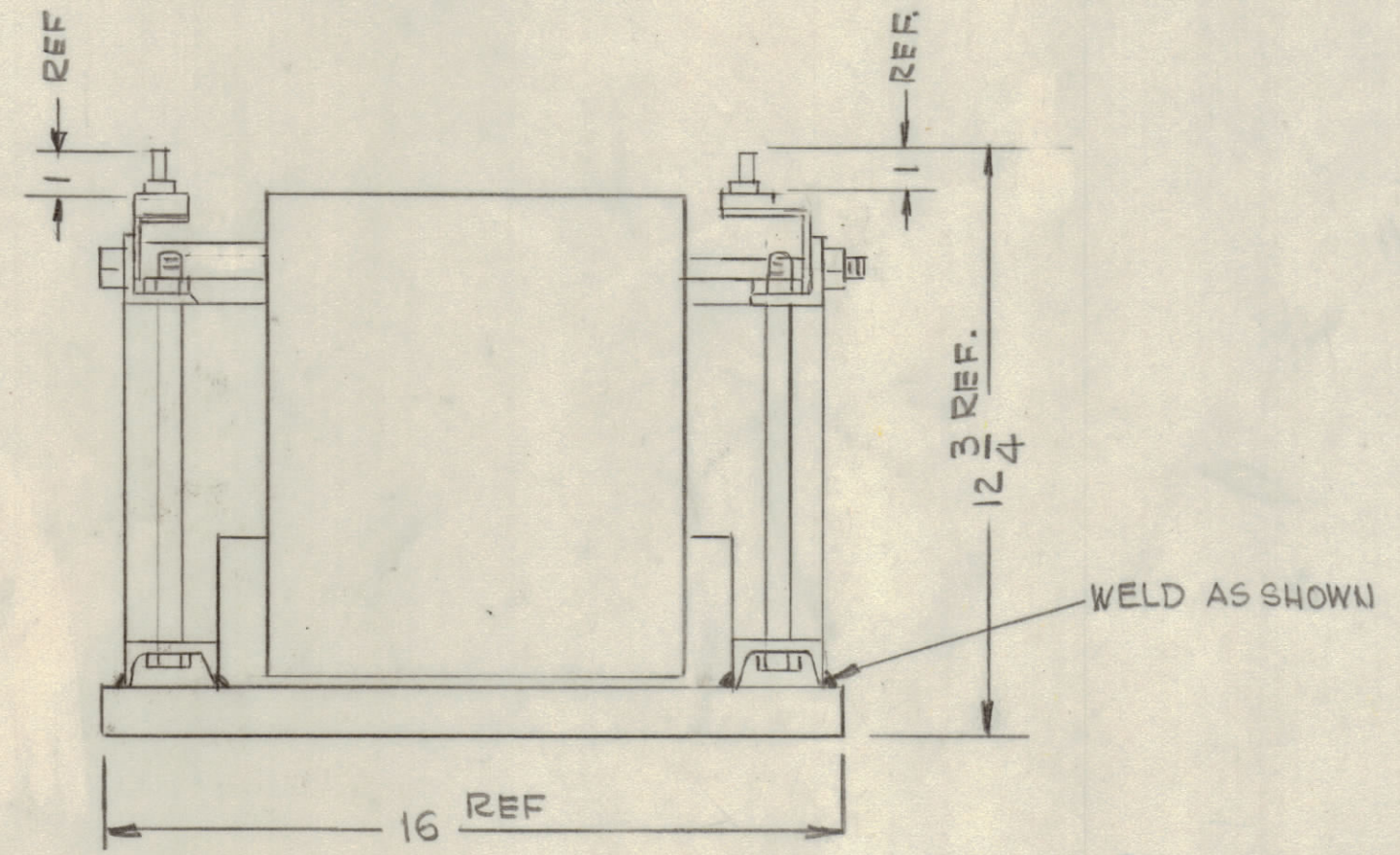


PC OF OAK SEE NOTE ON PICTORIAL

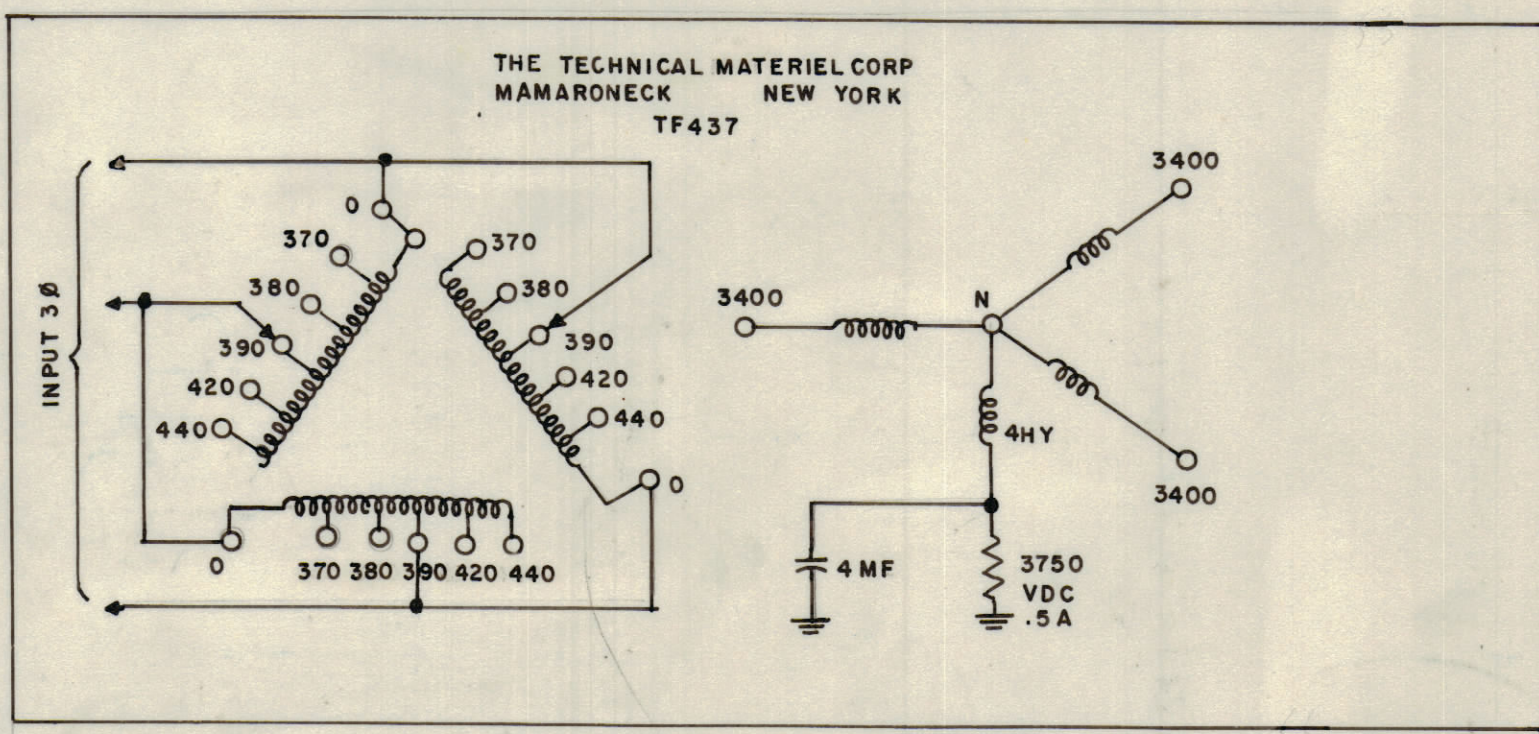


PC OF OAK (2) SILICONE VARNISH & PAINTED. SEE FINISH NOTE.

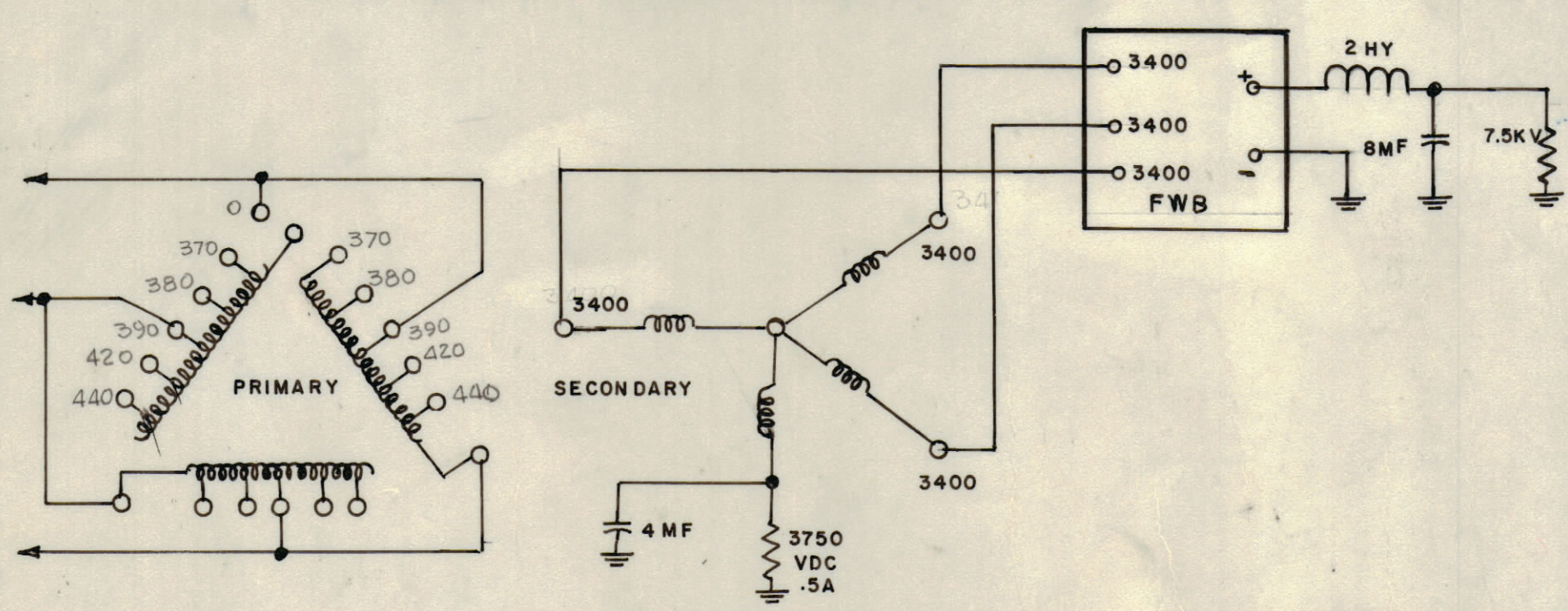
NOTE: ALL TERMINAL STUDS TO BE SUPPLIED WITH 4 HEXAGON NUTS; BRASS NICKEL PLATED 4 FLAT WASHERS; BRASS NICKEL PLATED 8 LOCK WASHERS; BRASS NICKEL PLATED



WELD AS SHOWN



SCHEMATIC DIAGRAM PLACE AS SHOWN ABOVE



SCHEMATIC DIAGRAM

1	HFT () 10K	
QTY / UNIT	MODEL USED ON	ASS'Y NO.
APPLICATION		
CODE		

NOTICE TO PERSONS RECEIVING THIS DRAWING
THE TECHNICAL MATERIEL CORPORATION claims proprietary right in the material disclosed hereon. This drawing is issued in confidence for engineering information only and may not be reproduced or used to manufacture anything shown hereon without permission from THE TECHNICAL MATERIEL CORPORATION to the user. This drawing is loaned for mutual assistance and is subject to recall at any time.

QTY. REQ.	ITEM	PART NO.	DESCRIPTION	SYMBOL
LIST OF MATERIAL				
THE TECHNICAL MATERIEL CORP. MAMARONECK, NEW YORK				
TRANSFORMER, POWER STEP-UP, THREE PHASE 380/440V				
MATERIAL			SIZE CODE IDENT NO. DWG NO.	ISSUE
FINISH			D 82679 TF 437	Ø
SCALE			SHEET	OF