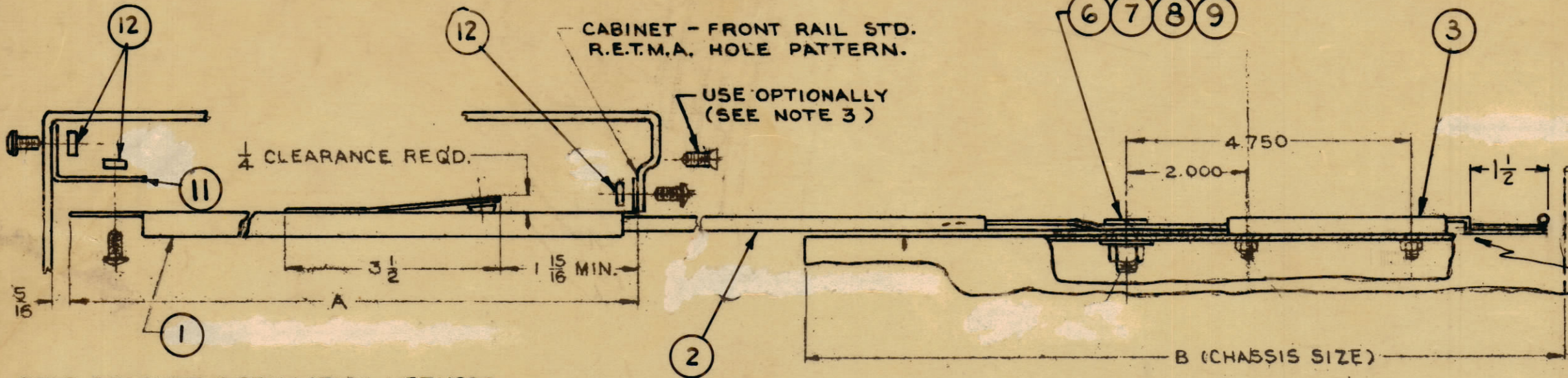
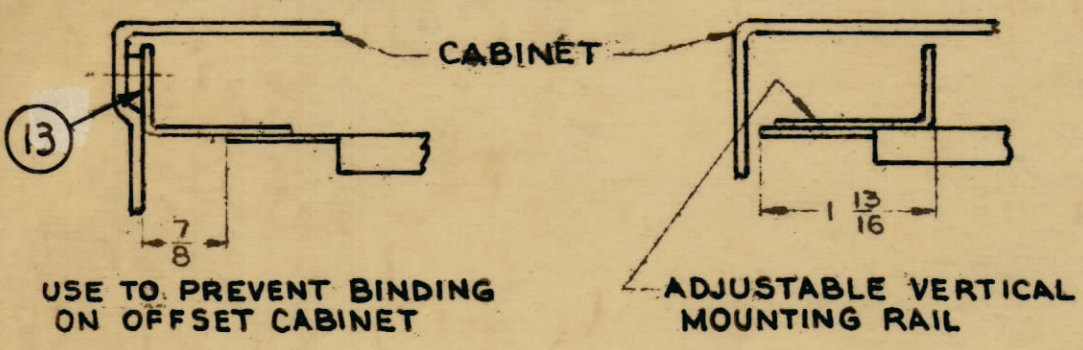


CHART "A"

TMC PART NO.	MFG. PART NO.	A	B	C	D
TK-107-12	C-230-D-12	12	11	15 1/16	6
TK-107-14	C-230-D-14	14	13	18 9/16	6
TK-107-16	C-230-D-16	16	15	18 1/4	7 1/16
TK-107-18	C-230-D-18	18	17	22 1/4	7 1/8
TK-107-20	C-230-D-20	20	19	22 1/4	9 1/16
TK-107-22	C-230-D-22	22	21	26 1/4	9 1/8
TK-107-24	C-230-D-24	24	23	26 1/4	11 1/16



REAR BRACKET INSTALLATION METHODS



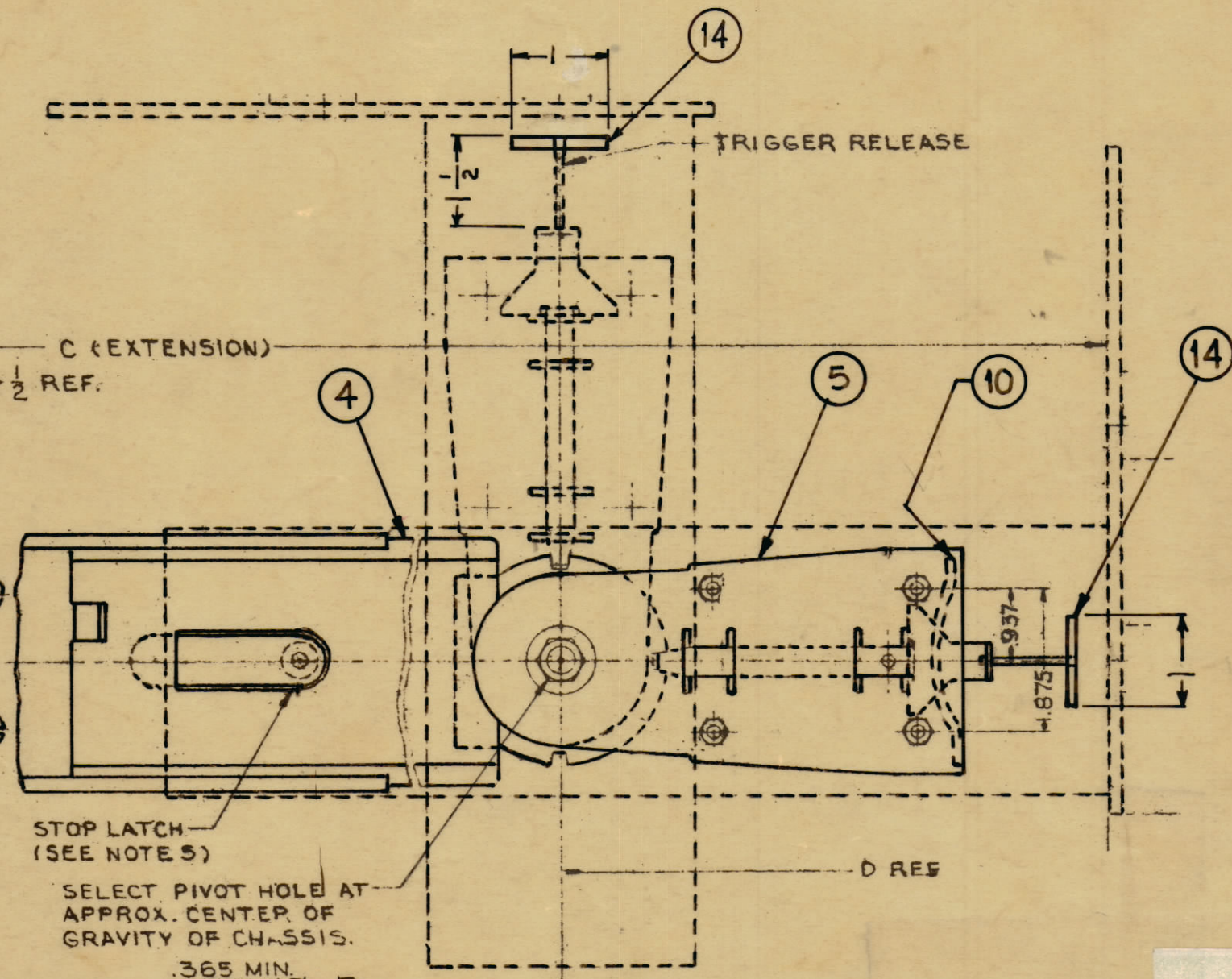
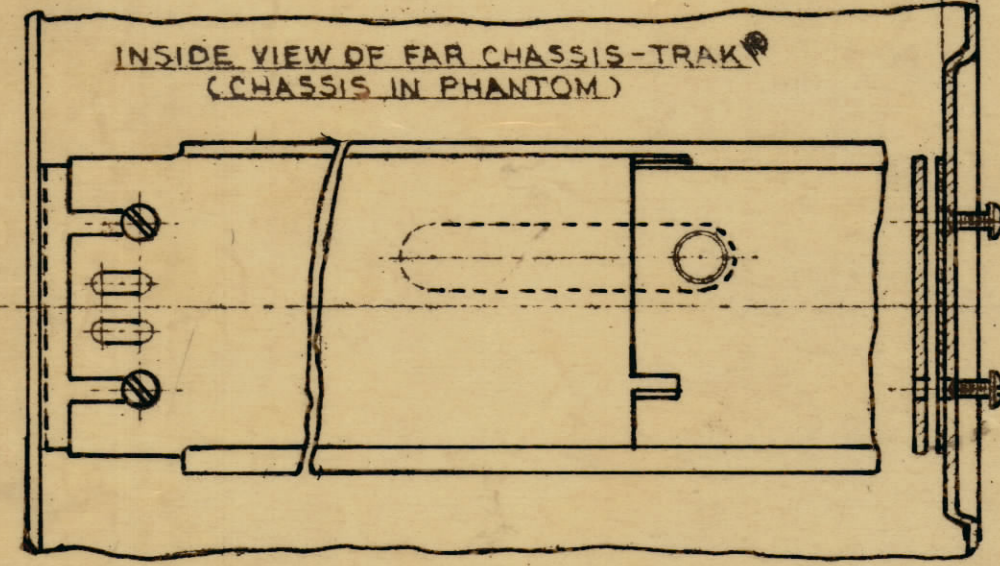
RELEASE HANDLE TO BE SCREWED IN PLACE

**SELECTION:**

A. DETERMINE INSIDE CABINET MEASUREMENT.  
 B. DETERMINE MOUNTING METHOD FOR CHASSIS-TRAK®  
 SELECT ONE:  
 A) DIRECT TO CABINET  
 B) VERTICAL MEMBER (NOTE 1) OR  
 C) REAR SUPPORT BRACKET

GENERAL NOTES

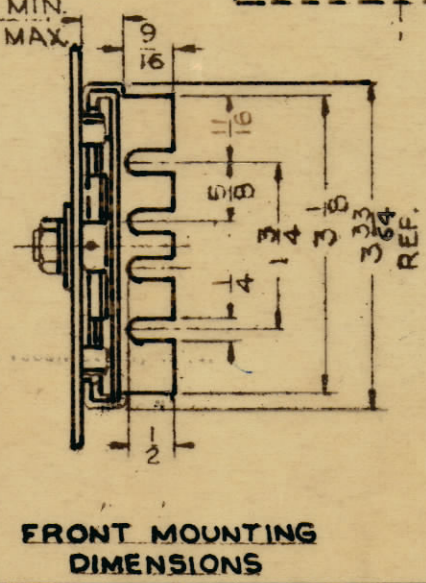
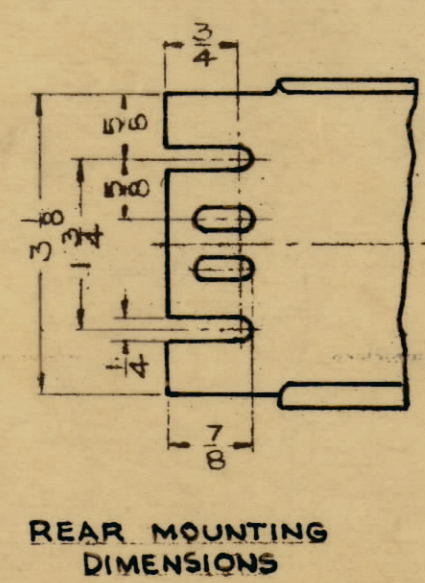
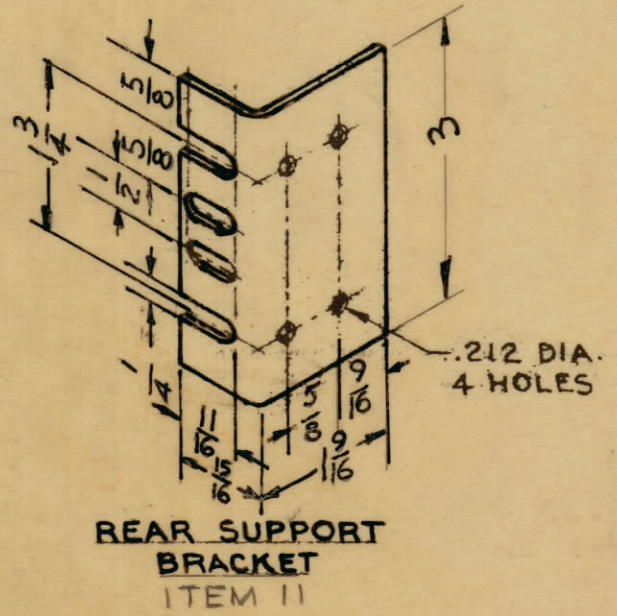
- REAR OF CHASSIS-TRAK® MAY BE SUPPORTED BY:  
 A) VERTICAL MEMBERS, TAPPED TO MATCH THE REAR MOUNTING HOLES, OR  
 B) REAR SUPPORT BRACKET.
- CHASSIS-TRAK AND REAR SUPPORT BRACKET SLOTS PERMIT HORIZONTAL AND VERTICAL ADJUSTMENT FOR CABINET AND CHASSIS DIMENSION VARIATIONS.
- COUNTERSINK FRONT RAIL FOR #10-32 FLAT HEAD SCREWS WHEN CHASSIS PANEL MUST BE FLUSH WITH CABINET.
- SELECT PIVOT HOLE WHICH MAINTAINS APPROXIMATE CENTER OF GRAVITY.
- TO REMOVE CHASSIS: DEPRESS BOTH STOP LATCHES AND PULL CHASSIS FORWARD.
- CHASSIS-TRAK® MODEL C-230-D MAXIMUM VERTICAL LOAD 100 LBS. PAIR.
- ALL TRAKS ARE CADMIUM PLATED AND ARE FINISHED WITH "POXYLUBE"® SOLID FILM LUBRICANT MFG. BY POLY-CHEM®, INDIANAPOLIS, INDIANA FOR ADHERANCE AND PROTECTION TO THE METAL. WEAR TESTS ON SURFACES TREATED WITH THIS MATERIAL HAVE SHOWN IT TO STAND PRESSURE LOADING AT MORE THAN 50,000 POUNDS PER SQUARE INCH WITH TEMPERATURE RANGE OF -100F TO +500F.
- ALL HARDWARE IN THE UNITS IS EITHER CADMIUM, CHROMIUM PLATED, OR STAINLESS STEEL FOR SALT SPRAY PROTECTION.
- ITEMS 4, 5, 6, 7, 8, 9, 10 ARE NORMALLY SUPPLIED AS PART OF ASSEMBLY, ITEM 3.
- PART NO. TK-107-XXSP (ITEM 15) WAS ASSIGNED FOR SIGNAL CORP. PURPOSES TO REPRESENT A TRACK SET INCLUDING EVERYTHING EXCEPT THE CHASSIS SECTION, ASSY (ITEMS 3 THRU 10).
- THE SLIDE LENGTH (12, 18, 20, 22, ETC...) SHOULD BE INSERTED IN PLACE OF "X" IN ANY TMC PART NO'S CONTAINING "XX".
- THIS ASSY IS USED AS A R.H. OR L.H. UNIT. R.H. INSTALL. SHOWN. ALL MOUNTING HARDWARE FURNISHED (SEE BUILDUP BELOW).



NOTICE TO PERSONS RECEIVING THIS DRAWING

THE TECHNICAL MATERIEL CORPORATION claims proprietary right in the material disclosed hereon. This drawing is issued in confidence for engineering information only and may not be reproduced or used to manufacture anything shown hereon without permission from THE TECHNICAL MATERIEL CORPORATION to the user. This drawing is loaned for mutual assistance and is subject to recall at any time.

Property of:  
 THE TECHNICAL MATERIEL CORPORATION  
 MAMARONECK, NEW YORK



NOMENCLATURE SHALL BE IN FOLLOWING FORM:

TK-107- 14  
 DWG. NO. LENGTH (See Chart "A")

REQ. NO.	ITEM	TMC PART NO.	DESCRIPTION	SYMBOL
	1	15	TK-107-XXSP	TRACK SET, LESS CHASSIS SECT. SEE NOTE 10
	2	14	HA-121	HANDLE, TEE, SLIDE RELEASE
	2	13	TK-107-SB	BAR, SPACER
A-154	6	12	TK-107-NB	BAR, NUT
B-131	2	11	TK-107-RS	BRACKET, SUPPORT, REAR
B-193	2	10	TK-107-CS	SPRING, LEAF SEE NOTE 9
A-1009	2	9	TK-107-PN	NUT, HEX.
A-1008	2	8	TK-107-PLW	WASHER, LOCK, INT.
A-1007	2	7	TK-107-PW	WASHER, FLAT
A-113-4	2	6	TK-107-PS	SCREW, SHOULDER, PIVOT
B-193	2	5	TK-107-CF	CHASSIS SECTION, FIXED
C-233	2	4	TK-107-XXCP	CHASSIS SECTION, PIVOT
C-232	2	3	TK-107-XXC	CHASSIS SECTION, ASSY SEE NOTE 9
C-228	2	2	TK-107-XXG	GUIDE SECTION, INTERMEDIATE
C-225	2	1	TK-107-XXS	SECTION, STATIONARY

STOCK SIZE		MATERIAL		TYPE & TEMPER		HEAT TREAT. SPEC.	
THE TECHNICAL MATERIEL CORP. MAMARONECK, NEW YORK		DRAWN: [Signature]		CHECKED: [Signature]		FINAL APPROVAL: [Signature]	
TRACK & SLIDE SET, TILT LOCK 3/2		DATE: 1-19-61		FINISH & SPEC. NO.		ELEC. DES. APP. MECH. DES. APP.	
TK-107		SHEET		OF		E	

SYM	ZONE	DESCRIPTION	DATE	CH. NO.	DRAFTS	CHECKER	ENG. APP.
E		UPDATED & CLARIFIED	12/9/63	10614	[Signature]	[Signature]	[Signature]
D		83 RELEASE SHAFT WAS PERMANENTLY ATTACHED. ITEMS (6), (9), (10) DELETED. TRIGGER RELEASE DIM WAS 1/4	3-20-63	8568	[Signature]	[Signature]	[Signature]
C		C2 ITEM (11) ADDED	2-9-63	8171	[Signature]	[Signature]	[Signature]
B		C3 NYLON TAPE INSTALLATION DETAIL DELETED	8-17-61	5438	[Signature]	[Signature]	[Signature]
A		C4 Item #11 Deleted (3/16 W x .020 H.K. NYLO-TAPE)	5-3-61	4837	[Signature]	[Signature]	[Signature]
A		C4 Item # 11 Added (also detail showing placement)					