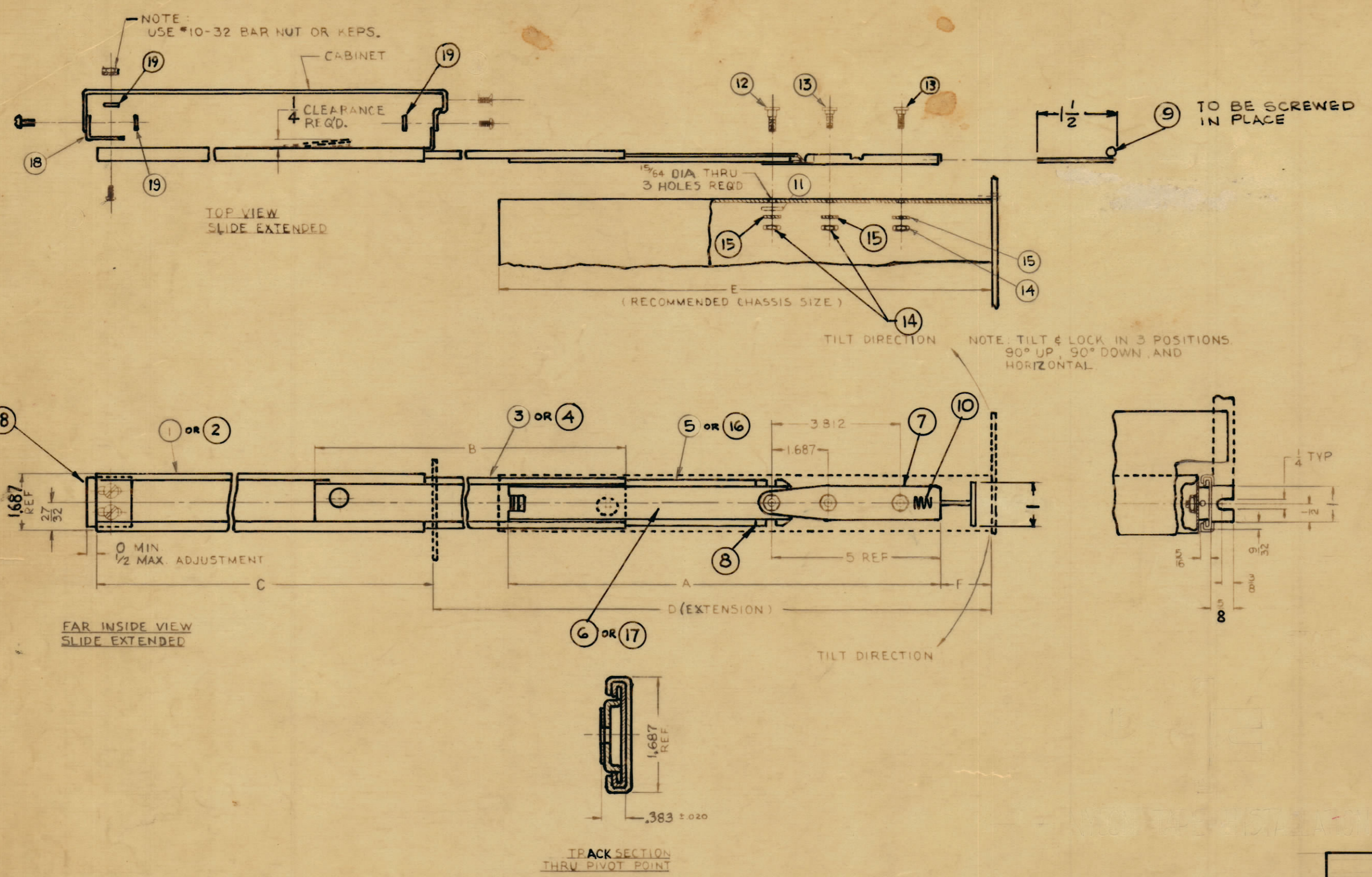


CHART I

TMC PART NUMBER	CAT. NUMBER	A	B	C	D	E	F
TK-108-12	C-300-D-12	10 1/2	9 1/4	12	13	11	1 1/4
TK-108-14	C-300-D-14	12 1/2	13 1/4	14	15	13	1 1/4
TK-108-16	C-300-D-16	12 1/2	13 1/4	16	17	15	2 1/4
TK-108-18	C-300-D-18	12 1/2	13 1/4	18	19	17	4 1/4
TK-108-20	C-300-D-20	18 1/2	19 1/4	20	21	19	1 1/4
TK-108-22	C-300-D-22	18 1/2	19 1/4	22	23	21	2 1/4
TK-108-24	C-300-D-24	18 1/2	19 1/4	24	25	23	4 1/4
TK-108-18-A		12 1/2	15 1/4	18	19	17	2 1/4

~NOTES~

- 1.- RIGHT HAND DETENT ASSY SHOWN.
- 2.- FINISH: CADMIUM PLATE AND IRIDITE DIP UNDER "POLYLUBE" SOLID FILM LUBRICATION BY POLY-CHEM®, INDIANAPOLIS, INDIANA.
- 3.- ITEM 6, 1/2 THE QUANTITY OF ITEMS 7 THRU 15 ARE NORMALLY SUPPLIED AS PART OF ASSEMBLY ITEM 5 (L.H. SECT.).
- 4.- ITEM 17, 1/2 THE QUANTITY OF ITEMS 7 THRU 15 ARE NORMALLY SUPPLIED AS PART OF ASSEMBLY ITEM 16 (R.H. SECT.).
- 5.- THE PART NO., TK-108-XXSP (ITEM 20) IS FOR SPARE PARTS PURPOSES ONLY, REPRESENTS A TRACK SET INCLUDING EVERYTHING EXCEPT THE CHASSIS SECTIONS, ITEM 5 THRU 17.
- 6.- THE CORRECT SLIDE LENGTH (12, 18, 20, 22 ETC...) SHOULD BE INSERTED IN PLACE OF "XX" IN ANY TMC PART NO'S CONTAINING "XX".



FOR COMPLETE SET  
NOMENCLATURE SHALL BE IN FOLLOWING FORM:

TK-108 - 12

DWG. NO.                      LENGTH  
(SEE "A" CHART I)

NOTICE TO PERSONS RECEIVING THIS DRAWING

THE TECHNICAL MATERIEL CORPORATION claims proprietary right in the material disclosed herein. This drawing is issued in confidence for engineering information only and may not be reproduced or used to manufacture anything shown hereon without permission from THE TECHNICAL MATERIEL CORPORATION to the user. This drawing is loaned for your assistance and is subject to recall at any time.

Property of:  
THE TECHNICAL MATERIEL CORPORATION  
MAMARONECK, NEW YORK

REF	ITEM	TMC PART NO.	DESCRIPTION	SYMBOL
	1	20	TK-108-XXSP	TRACK SET, LESS CHASSIS SECT.
B-162	6	19	TK-108-NB	BAR, NUT
B-161	2	18	TK-108-RS	BRACKET, SUPPORT, REAR
C-338RH	1	17	TK-108-XXCPR	CHASSIS SECT., PIVOT, RH.
C-337-RH	1	16	TK-108-XXCR	CHASSIS SECT., ASSY, RH
A-1022	6	15	TK-108-CLW	WASHER, LOCK, INT., NO. 12
A-1021	6	14	TK-108-CN	NUT, HEX., 12-24
A-321-5	4	13	TK-108-CS2	SCREW, SHOULDER, RELEASE, 12-24
A-321-4	2	12	TK-108-CS1	SCREW, SHOULDER, PIVOT, 12-24
A-1012	2	11	TK-108-CW	WASHER, FLAT, NO. 12
A-190-1	2	10	TK-108-CS	SPRING, COMP.
	2	9	HA-121	HANDLE, TEE, SLIDE RELEASE
B-209	2	8	TK-108-CD	DETENT, CHASSIS SECT.
B-208	2	7	TK-108-CF	CHASSIS SECT., FIXED
C-338LH	1	6	TK-108-XXCPL	CHASSIS SECT., PIVOT, LH
C-337LH	1	5	TK-108-XXCL	CHASSIS SECT., ASSY, LH
C-303RH	1	4	TK-108-XXGR	GUIDE SECT., INTERMEDIATE, RH
C-303LH	1	3	TK-108-XXGL	GUIDE SECT., INTERMEDIATE, LH
C-305RH	1	2	TK-108-XXSR	STATIONARY SECT., RH
C-305LH	1	1	TK-108-XXSL	STATIONARY SECT., LH

SIM	DATE	DESCRIPTION	DATE	CH. NO.	DRAFTS	CHECKER	ENG. APP.
F	1/23/63	DWG UPDATED & CLARIFIED	10613				
E	4-30-63	1 DIM WAS 1 1/4 ITEMS (2) WAS A-321-1, (3) WAS A-321-2	8905				
D	3-20-63	1/8 SS ROD WAS PERMANENTLY ATTACHED DELETED ITEMS (3), (4), (5), ADDED "REF * CHASSIS TRAK CORP"	8570				
C	2-9-63	PICTORIAL CLARIFIED ITEM (4) WAS A-319; ON CHART I, TK-108-18-A ADDED	8171				
B	8-17-61	Item 15 DELETED (3/16 W.X. 0.020 IN. NYLO-TAPE)	5438				
A	5-3-61	Item 15 Added (also detail showing placement)	4837	J.C.B.			

UNLESS OTHERWISE SPECIFIED:  
DIMENSIONS ARE IN INCHES  
TOLERANCES ON  
FRACTIONS ± 1/64    DECIMALS ± .005    ANGLES ± 1/2°  
MAXIMUM ALLOWABLE TOLERANCES HAVE BEEN DETERMINED AND ANY DEVIATIONS WILL BE ADJUSTED FOR REJECTION  
REMOVE ALL BURRS & SHARP EDGES

REG. PER UNIT	MODEL	SECTION	ASSY. NO.	DATE
				1-19-61

THE TECHNICAL MATERIEL CORP.  
MAMARONECK, NEW YORK

**TRACK & SLIDE SET, TILT LOCK, 1 3/4**

APPROVED: *[Signature]* *[Signature]* *[Signature]*

**TK-108** F