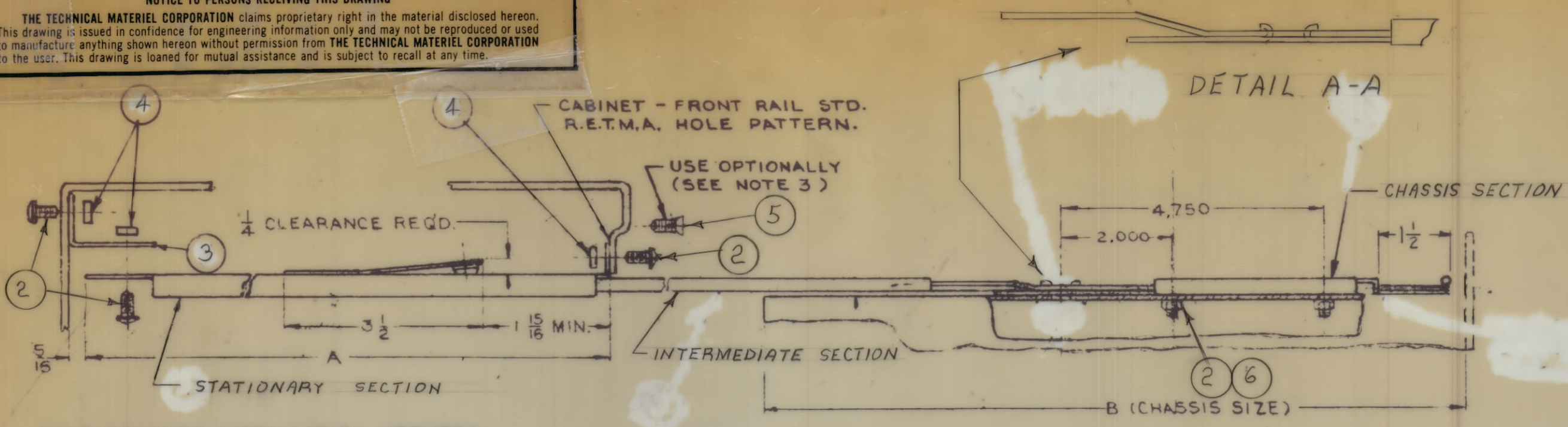


CHART "A"

TMC PART NO.	MFG. PART NO.	A	B	C	D
TK-109-12	C-230-D-12	12	11	15 1/16	5
TK-109-14	C-230-D-14	14	13	18 7/16	6
TK-109-16	C-230-D-16	16	15	18 1/4	7 1/16
TK-109-18	C-230-D-18	18	17	22 1/4	7 1/16
TK-109-20	C-230-D-20	20	19	22 1/4	9 1/16
TK-109-22	C-230-D-22	22	21	26 1/4	9 1/16
TK-109-24	C-230-D-24	24	23	26 1/4	11 1/16

NOTICE TO PERSONS RECEIVING THIS DRAWING
 THE TECHNICAL MATERIEL CORPORATION claims proprietary right in the material disclosed herein. This drawing is issued in confidence for engineering information only and may not be reproduced or used to manufacture anything shown hereon without permission from THE TECHNICAL MATERIEL CORPORATION to the user. This drawing is loaned for mutual assistance and is subject to recall at any time.



SELECTION:

- A. DETERMINE INSIDE CABINET MEASUREMENT.
 B. DETERMINE MOUNTING METHOD FOR CHASSIS-TRAK®
 SELECT ONE:
 A) DIRECT TO CABINET
 B) VERTICAL MEMBER (NOTE 1) OR
 C) REAR SUPPORT BRACKET

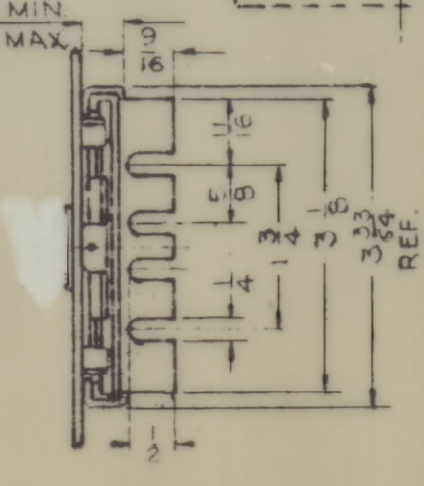
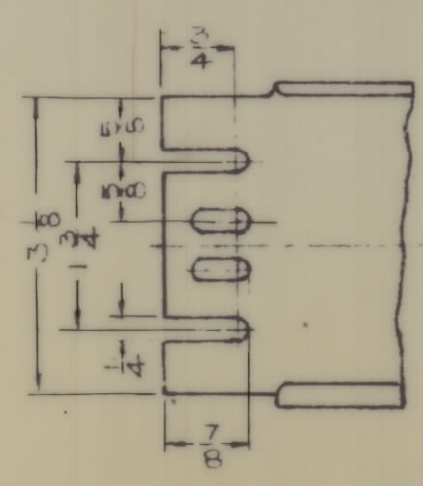
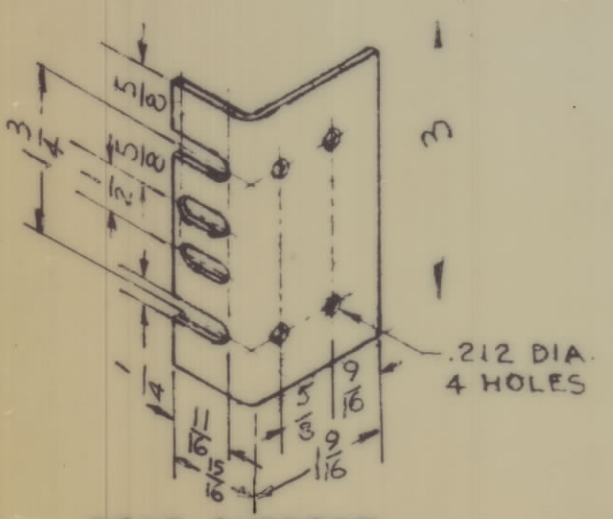
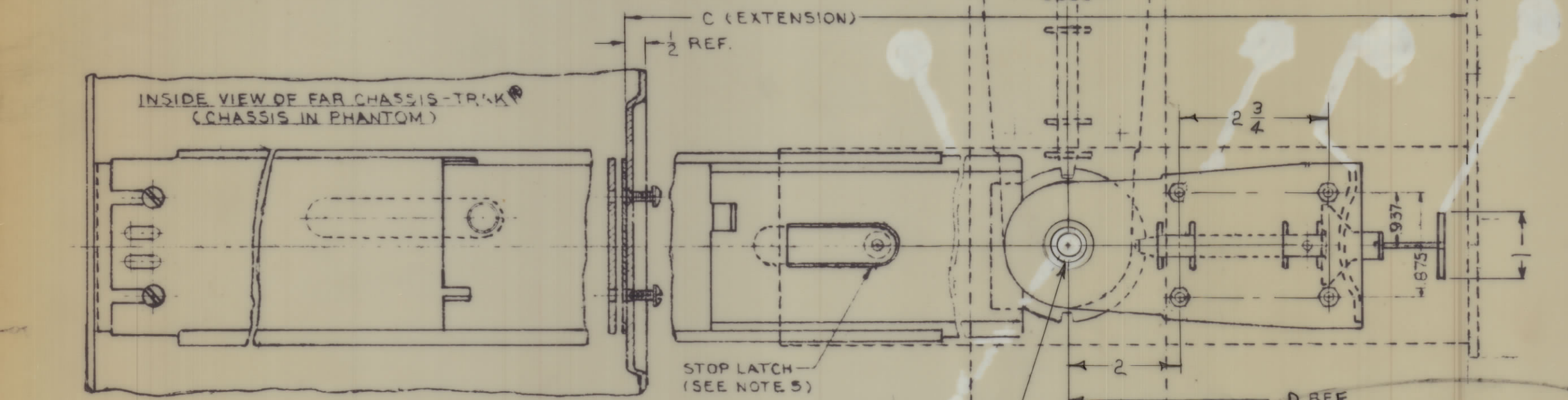
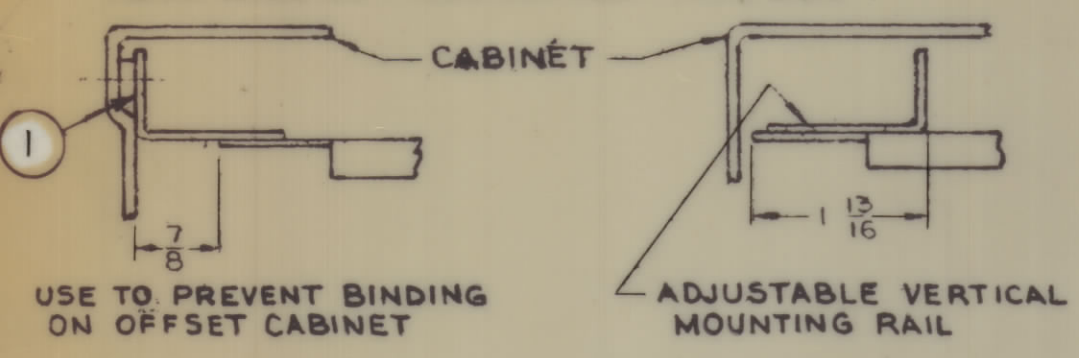
GENERAL NOTES

- REAR OF CHASSIS-TRAK® MAY BE SUPPORTED BY:
 A) VERTICAL MEMBERS, TAPPED TO MATCH THE REAR MOUNTING HOLES, OR
 B) REAR SUPPORT BRACKET.
- CHASSIS-TRAK AND REAR SUPPORT BRACKETS SLOTS PERMIT HORIZONTAL AND VERTICAL ADJUSTMENT FOR CABINET AND CHASSIS DIMENSION VARIATIONS.
- COUNTERSINK FRONT RAIL FOR #10-32 FLAT HEAD SCREWS WHEN CHASSIS PANEL MUST BE FLUSH WITH CABINET.
- SELECT PIVOT HOLE WHICH MAINTAINS APPROXIMATE CENTER OF GRAVITY.
- TO REMOVE CHASSIS: DEPRESS BOTH STOP LATCHES AND PULL CHASSIS FORWARD.
- CHASSIS-TRAK® MODEL C-230-D MAXIMUM VERTICAL LOAD 100 LBS. PAIR.
- ALL TRAKS ARE CADMIUM PLATED AND ARE FINISHED WITH "POXYLUBE"® SOLID FILM LUBRICANT MFG. BY POLY-CHEM®, INDIANAPOLIS, INDIANA FOR ADHERANCE AND PROTECTION TO THE METAL. WEAR TESTS ON SURFACES TREATED WITH THIS MATERIAL HAVE SHOWN IT TO STAND PRESSURE LOADING AT MORE THAN 50,000 POUNDS PER SQUARE INCH WITH TEMPERATURE RANGE OF -100F TO +500F
- ALL HARDWARE IN THE UNITS IS EITHER CADMIUM, CHROMIUM PLATED, OR STAINLESS STEEL FOR SALT SPRAY PROTECTION.

NOTE: THIS ASS'Y. IS USED AS A R.H. OR L.H. UNIT, R.H. INSTALLATION SHOWN. ALL MTG. HARDWARE FURNISHED. (SEE BUILD UP BELOW)

OBSOLETE

REAR BRACKET INSTALLATION METHODS



NOMENCLATURE SHALL BE IN FOLLOWING FORM:

TK-109-14
 DWG. NO. LENGTH (See Chart "A")

REQ	ITEM	TMC PART NO.	DESCRIPTION	SYMBOL
8	6		10-32 NUT & LOCK WASHER (KEPS)	
4	5		SCREW, 10-32 X 1/2 FLAT HD. (CAD. PL.)	
6	4		1/8 BAR NUT 10-32	
2	3		REAR SUPPORT BRACKET (B31)	
20	2		SCREW, 10-32 BIND HD. (CAD. PL.)	
2	1		BAR SPACER W/ NO. 10 CLEARANCE HOLE	

THE TECHNICAL MATERIEL CORP.
 MAMARONECK NEW YORK

TRACK & SLIDE SET, TILT LOCK 3 1/2 WITH PERMANENT PIVOT

R. Falaw
 DRAWN CHECKED

5-20-71

TK-109 X

SYM	ZONE	DESCRIPTION	DATE	CH. NO.	DRAFTS	CHECKER	ENG. APP.
X		EXP RELEASE	5-20-71			RZ	

UNLESS OTHERWISE SPECIFIED:
 DIMENSIONS ARE IN INCHES
 TOLERANCES ON FRACTIONS ± 1/64 DECIMALS ± .005 ANGLES ± 1/2°

SCALE
 MAXIMUM ALLOWABLE TOLERANCES HAVE BEEN DETERMINED AND ANY DEVIATIONS WILL BE CAUSE FOR REJECTION. REMOVE ALL BURRS & SHARP EDGES