

REVISIONS						
ZONE	SYM	DESCRIPTION	DATE	E.M.N. NO.	DRAFT	CHKD APPD
-4	X	EXPERIMENTAL RELEASE	4-7-64	X	A.M.	
-4	X1	TK-120-RS & TK120-NB REVISED F DIM. DELETED.	5-4-64	X1	A.M.	
-4	X2	ALL NOMENCLATURE REVISED SLIDE DESCRIPTION ADDED	6/8/64	X2	A.M.	
	Ø	ORIGINAL RELEASE FOR PRODUCTION	10-23-64	Ø	J.S.	
H7	A	ON NUT BAR TK120-NB-1 DIM. 15/8 WAS 3/4, 9/16 WAS 1/8	11-8-64	12945	H.B.	J.S.

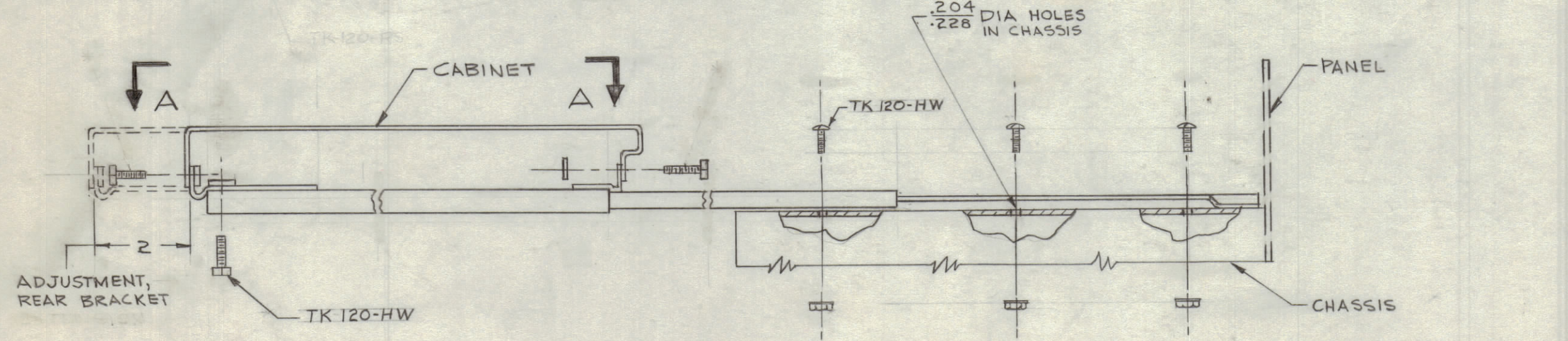
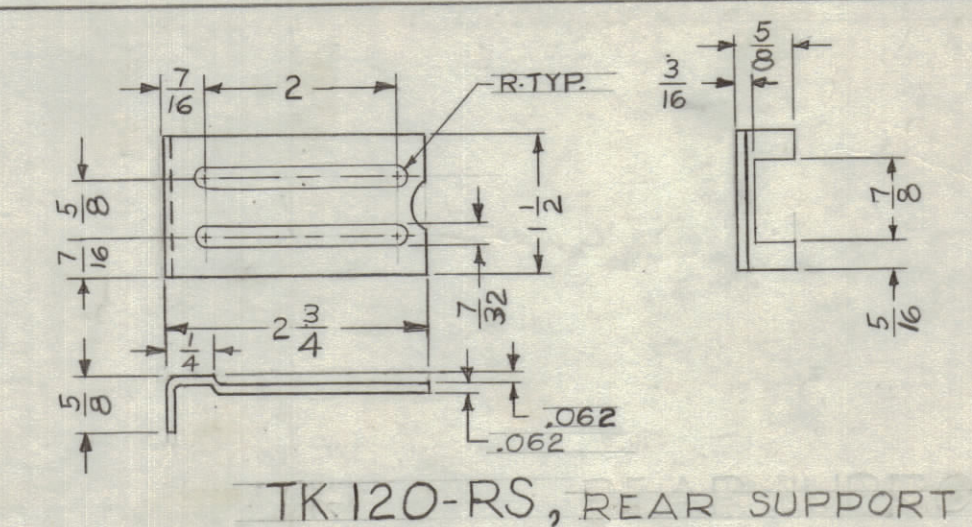
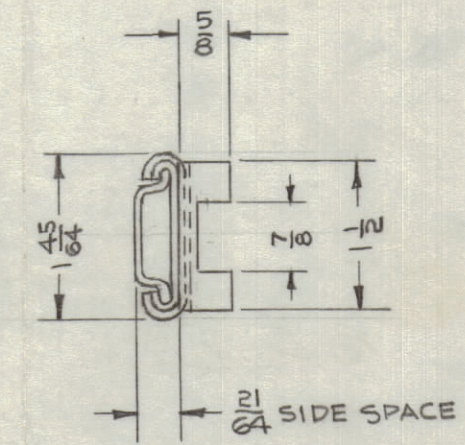
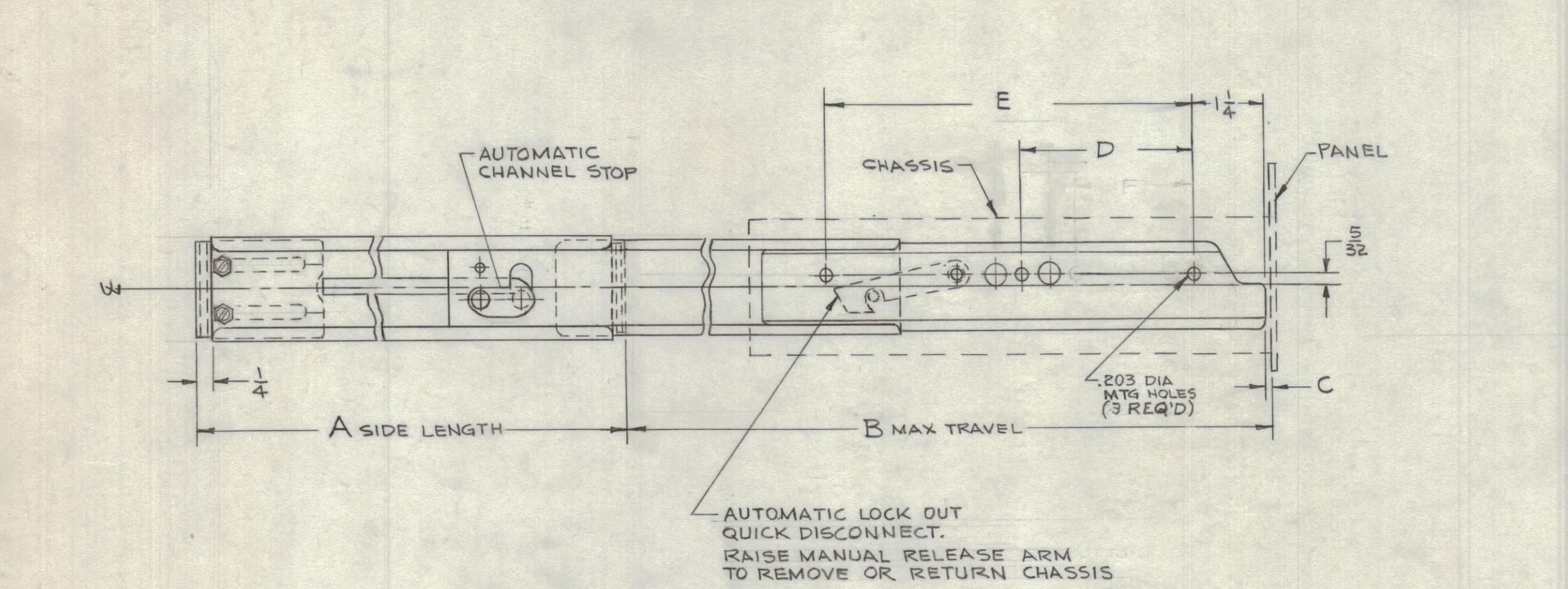


CHART I

TMC PART NO.	CAT PART NO.	A	B	C	D	E	MODEL LENGTH
TK 120-10	SS-168-NT-10	9 7/8	10 9/32	-	1.500	5.250	10
-12	SS-168-NT-12	11 7/8	13 9/32	1	2.750	7.000	12
-14	SS-168-NT-14	13 7/8	15 25/32	1	4.250	8.000	14
-16	SS-168-NT-16	15 7/8	17 25/32	3	4.250	8.000	16
-18	SS-168-NT-18	17 7/8	19 25/32	1	6.250	12.000	18
-20	SS-168-NT-20	19 7/8	21 25/32	3	6.250	12.000	20
-22	SS-168-NT-22	21 7/8	23 25/32	1	8.250	16.000	22
TK 120-24	SS-168-NT-24	23 7/8	25 25/32	3	8.250	16.000	24



NOTES:

TK120-NB-1 (4 REQUIRED), TK120-NB-2 (2 REQUIRED), TK120-RS (2 REQUIRED), TK120 (HEX) HW (12 REQUIRED) AND TK120 (BINDER) HW (6 REQUIRED) ARE REQUIRED TMC PART NUMBERS PER EACH TRACK & SLIDE SET. HARDWARE FURNISHED BY MANUFACTURER.

SLIDE DESCRIPTION: AUTOMATIC LOCK, QUICK DISCONNECT DEPRESS MANUAL RELEASE BUTTON TO REMOVE OR RETURN CHASSIS.

SPECIFICATIONS:

MATERIAL: TRACK, SLIDE, TK120-NB-1, TK120-NB-2 & TK120-RS ARE TEMPER COLD ROLLED STEEL (PER SPEC. QQ-S-636) TK120-HW ARE CARBON STEEL. SPRINGS, RIVETS, PINS & STOPS ARE 18-8 STAINLESS STEEL.

FINISH: TRACK & SLIDE, TK120-NB-1 & NB-2, TK120-RS ARE ZINC PLATED (PER MIL-QQ-Z-325, CLASS 2 TYPE II & OLIVE DRAB IRIDITE COATED). STAINLESS STEEL PARTS ARE PASSIVATED.

LUBRICATION: MOLYBDENUM DISULPHIDE WITH AN EPOXY BASE PER MIL-L-22273 IS BAKED ON AT 375° TO WITHSTAND TEMPERATURE OF -100 +500° F, & PRESSURE LOADINGS OF MORE THAN 50 M AT 25 F.P.M.

SALT SPRAY: MEETS OR EXCEEDS 100 HOURS 20% SALT FOG AT 95° TEMPERATURE

LOAD RATING: 75 LBS./PAIR AT FULL EXTENSION, WITH 100% SAFETY FACTOR, WITHOUT STRUCTURAL FAILURE.

TMC PART NO. SHALL BE IN THE FOLLOWING FORM: **TK120-10**

TMC PART NO. MODEL LENGTH (SEE CHART 1)

REQ'D.	ITEM	PART NUMBER	DESCRIPTION	SYMBOL
I. JOHNSON LIST OF MATERIAL				
MATERIAL		SEE SPECIFICATIONS		
FINISH		SEE SPECIFICATIONS		
UNLESS OTHERWISE SPECIFIED DIMENSIONS ARE IN INCHES AND INCLUDE CHEMICALLY APPLIED OR PLATED FINISHES		DRAWN: [Signature] DATE: 10-15-63		
DECIMALS: .X ± .05, .XX ± .01, .XXX ± .005		FRACTIONS: ± 1/64, ANGLES: ± 0° 30'		DATE: 4-28-64
TOLERANCES		ELECT. DES. DATE: 10-23-64		DATE: 10-23-64
THE CONTENTS OF THIS DRAWING ARE THE EXCLUSIVE PROPERTY OF THE TECHNICAL MATERIEL CORP. ITS UNAUTHORIZED USE OR REPRODUCTION IN WHOLE OR IN PART IS STRICTLY FORBIDDEN.		MECH. DES. DATE: 10-23-64		DATE: 10-23-64

THE TECHNICAL MATERIEL CORP. MAMARONECK, NEW YORK	
TITLE: TRACK & SLIDE SET NON-TILT	
DATE: 10-15-63	DATE: 10-23-64
DATE: 4-28-64	DATE: 10-23-64
DATE: 10-23-64	DATE: 10-23-64
DATE: 10-23-64	DATE: 10-23-64