

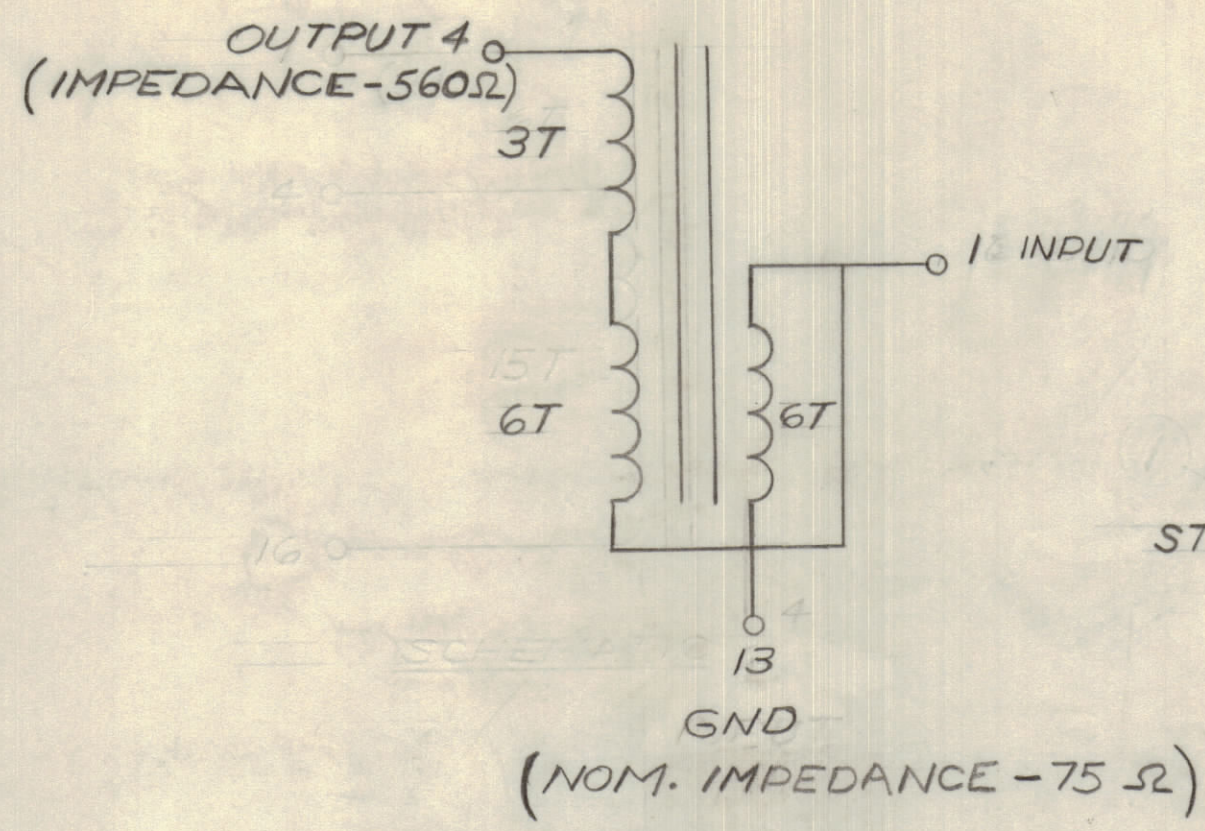
IF IT IS FOUND DESIRABLE TO CHANGE ANY TOLERANCE OR OTHER DETAIL SPECIFIED ON THIS DRAWING NOTIFY THE PURCHASER PROMPTLY.

MAXIMUM ALLOWABLE TOLERANCES HAVE BEEN DETERMINED AND DEVIATIONS WILL BE CAUSE FOR REJECTION. REMOVE ALL BURRS AND SHARP EDGES.

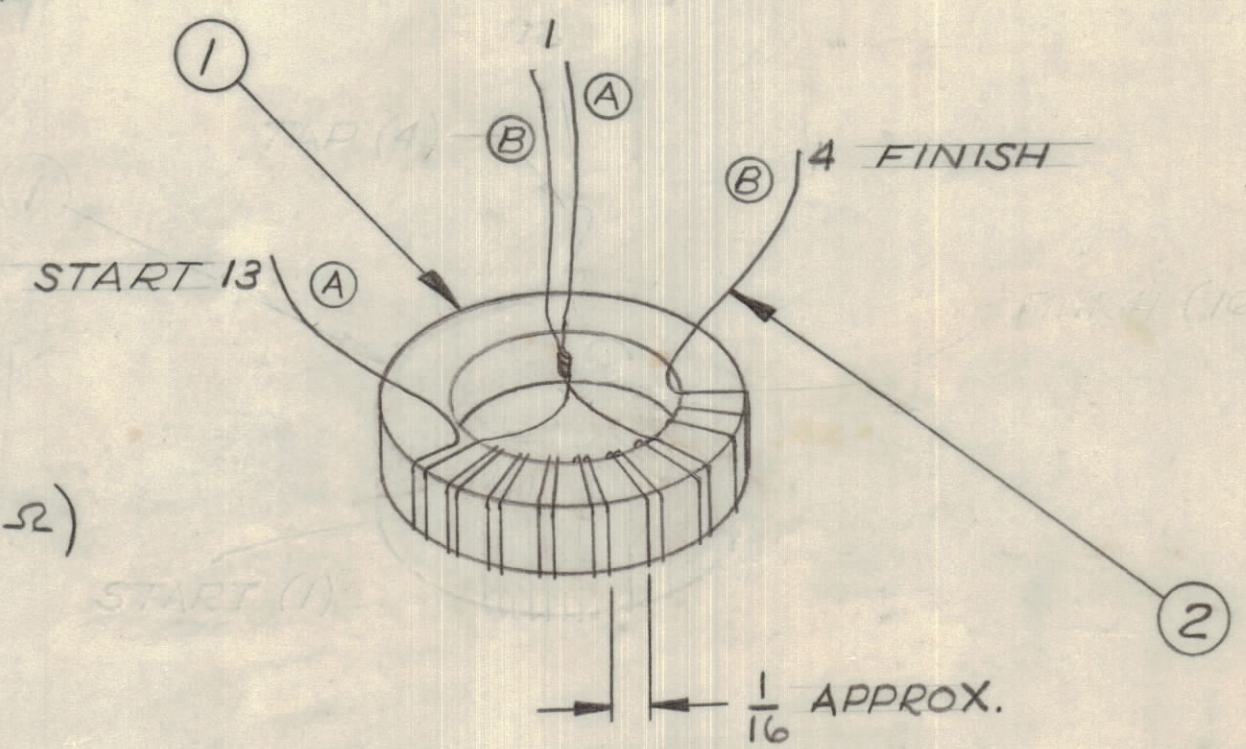
DIMENSIONS IN INCHES UNLESS OTHERWISE SPECIFIED

ISSUE	ITEM	CHANGED FROM	DATE	CN. NO.	DRAFTS	CHECKER	ENG. APP.
0		REL TO PROD	APRIL 11/68		AP	W	W

REQ.	ITEM	PART NO.	DESCRIPTION	SYMBOL
1	1	CI 10010-1	CORE	
AR	2	WI123-28	WIRE ELEC. MAGNET	
AR	3	GL 130	Q-DOPE	
AR	4	GL10005-3/10H	ENCAPSULANT	
1	5	NP10151	NAMEPLATE	
1	6	BP10006-1	SHELL	
1	7	BP10005	HEADER	
AR	8	BS 100	SOLDER SOFT	



SCHEMATIC

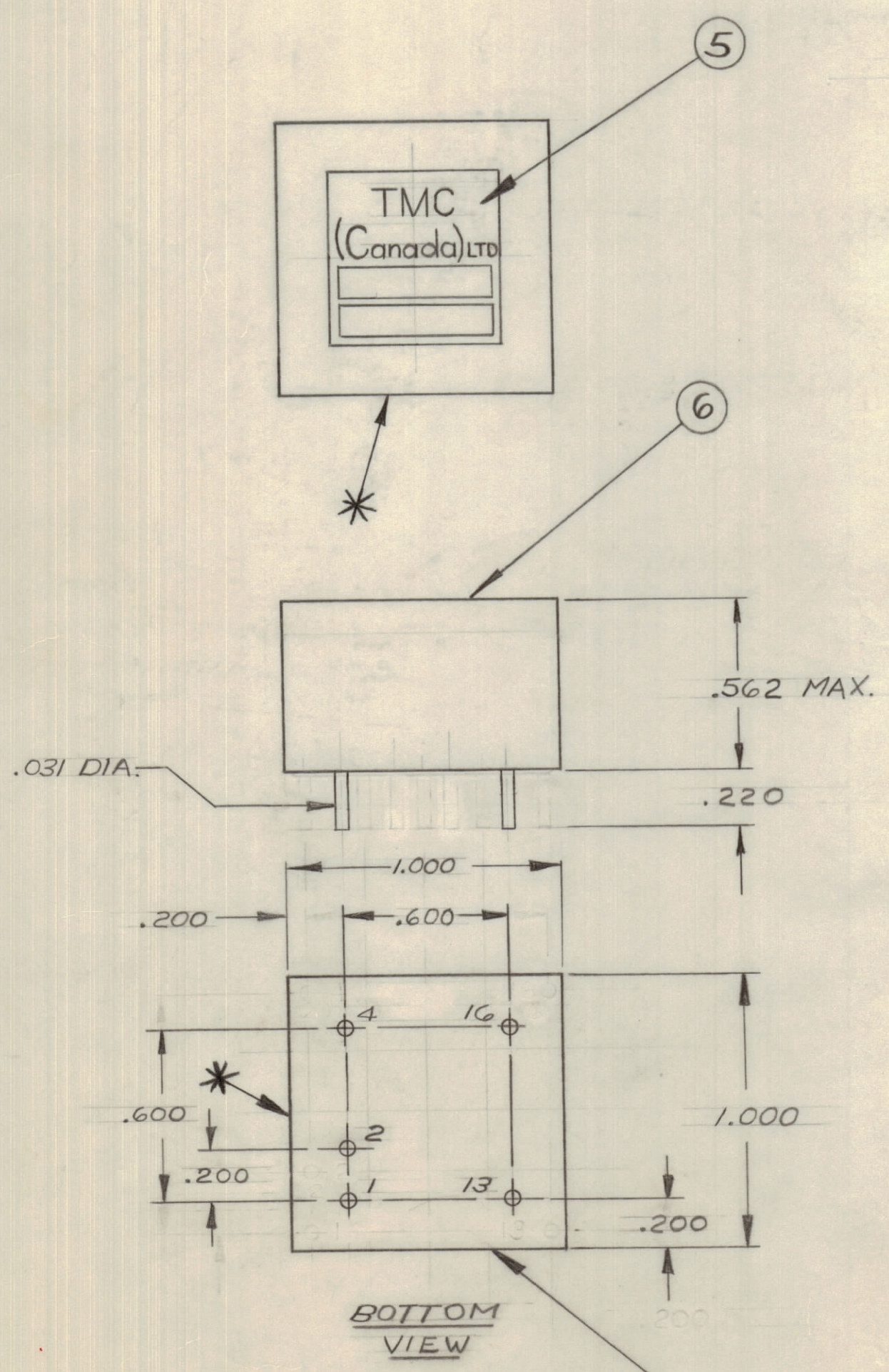


NOTES :-

1. WIND 2 WIRES A AND B (USING ITEM 2) TOGETHER ON THE CORE FOR 6 TURNS.
2. CONNECT START END OF WIRE B TO THE FINISH END OF WIRE A AS SHOWN IN SKETCH.
3. CONTINUE TO WIND WIRE B FOR ANOTHER 3 TURNS.
4. DIP COIL IN ITEM 3 AND BAKE FOR 1/2 HOUR AT 125°F
5. TEST TRANSFORMER
6. MOUNT COIL ON BASE AND CONNECT WIRES TO CORRESPONDING PINS.
7. POT TRANSFORMER USING ITEM 4 AS PER SPEC S 10149
8. INSTALL NAMEPLATE, ITEM 5.

SPECIFICATIONS :-

INPUT VSWR FROM 100 KHZ TO 30 MHZ - TO BE BETTER THAN 1:1.33



BOTTOM VIEW

NOT TO BE RELEASED W/O AUTHORIZATION
 AUTH. BY.....
 DATE:.....

TR10004 0

TOLERANCES		SCALE:
ALL	DEC. DIM. ± .05	DRILL, PUNCH, COMMERCIAL STOCK
OTHERS	FRAC. DIM. ± 1/64 .XX*.01	SIZES AND MANUFACTURERS
	ANGULAR DIM. ± 0° 30'	TOLERANCES ARE NOT INCLUDED.

AMC 21	070/68	FEB 13/68
MODEL	PROJECT NO.	ASSY. NO.
		DATE

TMC (Canada) LIMITED			
STOCK SIZE		OTTAWA ONTARIO	
TRANSFORMER RF			
MATERIAL	WEIGHT PER PC.		
TYPE & TEMPER	AP	K.H.	
	DRAWN	ELEC. DES. APP.	MECH. DES. APP.
HEAT TREAT. SPEC.	CHECKED	FINAL APPROVAL	
FINISH & SPEC. NO.		TR 10004 0	