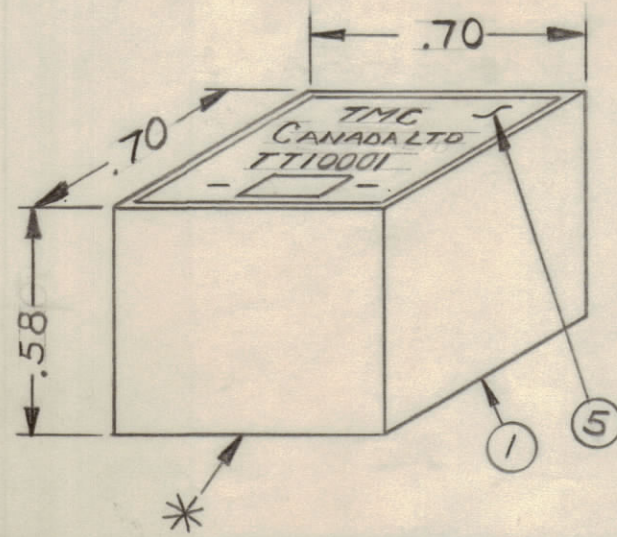
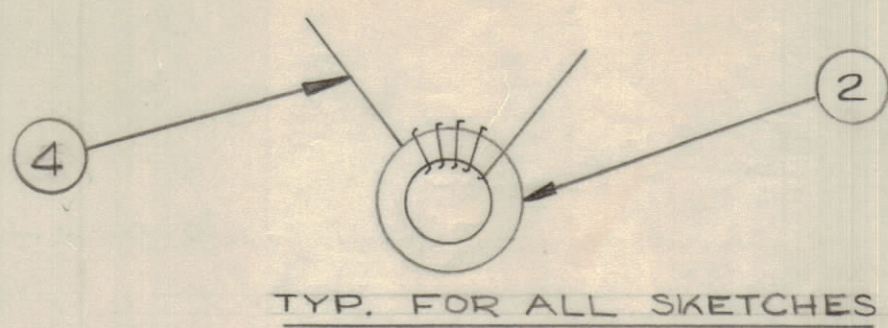
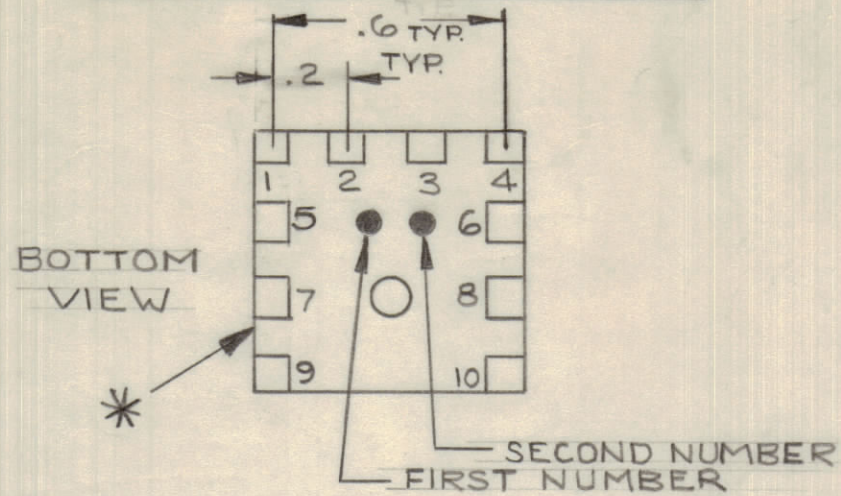


IF IT IS FOUND DESIRABLE TO CHANGE ANY TOLERANCE OR OTHER DETAIL SPECIFIED ON THIS DRAWING NOTIFY THE PURCHASER PROMPTLY.				DIMENSIONS IN INCHES UNLESS OTHERWISE SPECIFIED			
MAXIMUM ALLOWABLE TOLERANCES HAVE BEEN DETERMINED AND DEVIATIONS WILL BE CAUSE FOR REJECTION. REMOVE ALL BURRS AND SHARP EDGES.							
ISSUE	ITEM	CHANGED FROM	DATE	CN. NO.	DRAFTS	CHECKER	ENG. APP.
A		REDRAWN	NOV. 1/67		AP		
B		REV AS PER CEMN	SEPT 20/68	394	AD		
C		REV AS PER CEMN	10 AUG 72	1191	CC		
D		REV AS PER CEMN	SEPT 11/71	1254	HCS		



COLOUR CODE MARKING



NOTE :-  
 1- COLOUR CODE INDICATES LAST TWO DIGITS IN TMC PART NO.  
 2- \* - INDICATES POSITION OF NAMEPLATE

REQ.	ITEM	PART NO.	DESCRIPTION	SYMBOL
AR 1	BP10011		CASE	
AR 2	CI-10011-1-Q1		CORE	
AR 3	RC076F180J		RESISTOR FIXED	
AR 4	WI 10002-2		WIRE, MAGNET	
AR 5	NP 10157		NAMEPLATE	
AR 6	GL130		Q-DOPE	
AR 7	GL10005-310H		ENCAPSULANT	

TMC PART NO.	WIND NO. OF TURNS AS INDICATED BELOW	STAGE 2	STAGE 3	STAGE 4			STAGE 5	STAGE 6	STAGE 7	COLOUR CODE	ITEM 2, CORE	NOTE:-	SCHEMATIC DETAILS
				INDUCTANCE IN $\mu$ H	Q-MINIMUM	TEST FREQUENCY * - INDICATES MAX. NO. OF TURNS TO REMOVE							
TT10001-11	42	WIND 3 TURNS OF ITEM NO. 4 AS SHOWN IN SKETCH 2. WIND 3 TURNS OF ITEM NO. 4 AS SHOWN IN SKETCH 3.	DIP COIL IN ITEM NO. 6, AND BAKE FOR 1/2 HOUR AT 125° F.	114 ± 3 $\mu$ H		790 KHZ.	7	MOUNT TRANSFORMER ON BASE AND CONNECT WIRES TO CORRESPONDING NUMBERED PINS.	POT TRANSFORMERS USING ITEM 7 AS PER SPEC S10149	BRN/BRN	CI 10011-1-Q1	1- DIRECTION OF WINDING TO BE CLOSELY FOLLOWED AS SHOWN BELOW. 2- ALL TRANSFORMER LEADS TO BE 1 INCH LONG. 3- TIN ALL LEADS BACK 3/4 INCH.	
TT10001-12	42	WIND ONE LOOP OF ITEM NO. 4 AS SHOWN IN SKETCH 2.		112 ± 3 $\mu$ H		790 KHZ.	7	MOUNT TRANSFORMER ON BASE AND CONNECT WIRES TO CORRESPONDING NUMBERED PINS. INSTALL RESISTOR ITEM NO. 3 BETWEEN PINS 1 AND 2.	POT TRANSFORMERS USING ITEM 7 AS PER SPEC. S10149.	BRN/RED	CI 10011-1-Q1		
TT10001-13	42	WIND 6 TURNS OF ITEM NO. 4 AS SHOWN IN SKETCH 2.		112 ± 3 $\mu$ H		790 KHZ.	7	MOUNT TRANSFORMER ON BASE AND CONNECT WIRES TO CORRESPONDING NUMBERED PINS. PLACE A JUMPER (ITEM 4) BETWEEN PINS 1 AND 9.	POT TRANSFORMERS USING ITEM 7 AS PER SPEC S10149	BRN/ORN	CI 10011-1-Q1		

TOLERANCES		SCALE:
DEC. DIM. ±	DRILL, PUNCH, COMMERCIAL STOCK	
FRAC. DIM. ±	SIZES AND MANUFACTURERS	
ANGULAR DIM. ±	TOLERANCES ARE NOT INCLUDED.	

MODEL	PROJECT NO.	ASS'Y. NO.	DATE
	059/67		JUNE 21/67

STOCK SIZE		TMC (Canada) LIMITED	
MATERIAL		OTTAWA ONTARIO	
TYPE & TEMPER		TRANSFORMER	
HEAT TREAT. SPEC.		RF, TUNED.	
FINISH & SPEC. NO.		RPL	
		DRAWN	
		ELEC. DES. APP.	
		MECH. DES. APP.	
		CHECKED	
		FINAL APPROVAL	
		SHEET 1 of 3	
		TT-10001 D	