

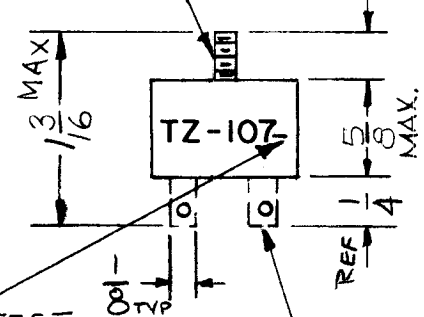
STANDARD DRAWING

THE CONTENTS OF THIS DRAWING ARE THE EXCLUSIVE PROPERTY OF THE TECHNICAL MATERIEL CORP. ITS UNAUTHORIZED USE OR REPRODUCTION IN WHOLE OR IN PART IS STRICTLY FORBIDDEN.

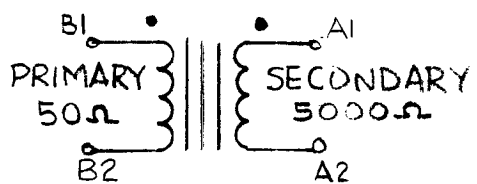
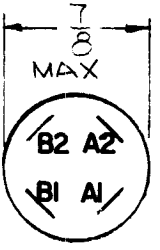
REQ. PER UNIT	USED ON		
	MODEL	ASS'Y. NO.	DATE
3	SBS-1		11-21-61
2	AFC-2		11-21-61
1	HFI-1		11-21-61
3	HNF-1		3-13-62
5	MSA-1		
8	MNF-1		

TZ-107 K

NON-MAGNETIC STAINLESS STEEL SCREW
2-56 THD



SOLDER LUGS, TINNED, BRASS, 4 REQ'D. STYLE OPTIONAL.



- FREQ. RESPONSE - 200KC TO 2MC W/IN 3 db
- BREAKDOWN VOLTAGE BETWEEN WINDINGS & CORE - 600 VDC, BETWEEN WINDINGS ~ 300 VDC

NOTES:
COLOR OF CASE - BLACK,
TMC PART NUMBER AND LUG NUMBERS
IN WHITE.

K	DELETED WINDING INFO	9/18/67	18506	EWS	<i>[Signature]</i>	EFM	<i>[Signature]</i>									
J	13/16 W/1, 5/8 W/1/2, 7/8 W/3/4	5-5-66	16216	WFO	<i>[Signature]</i>	<i>[Signature]</i>		REQ.	ITEM	PART NO.	WESCHLER DESCRIPTION	SYMBOL				
H	TERM. NOTE WAS LUGS, TINNED, BRASS, 4 REQ'D.	3-15-66	15960	G.D.L.	<i>[Signature]</i>	<i>[Signature]</i>					THE TECHNICAL MATERIEL CORP. MAMARONECK, NEW YORK					
G	REVISION LETT. NOTE ADDED FREQ. RESP. WAS 150KC TO 4MC	5.8.64	11374	WB	<i>[Signature]</i>	<i>[Signature]</i>					TRANSFORMER, R.F					
F	ADDED WINDING NOTE TO ELEC. DATA	1-14-64	10729	<i>[Signature]</i>	<i>[Signature]</i>	<i>[Signature]</i>										
SYM	DESCRIPTION	DATE	CH. NO.	DRAFTS	CHECKER	ENG. APP.	MATERIAL									
UNLESS OTHERWISE SPECIFIED:		SCALE: 4A - 3633														
DIMENSIONS ARE IN INCHES		MAXIMUM ALLOWABLE TOLERANCES HAVE BEEN DETERMINED AND ANY DEVIATIONS WILL BE CAUSE FOR REJECTION. REMOVE ALL BURRS AND SHARP EDGES					TYPE & TEMPER		HEATTREAT. SPEC.		DRAWN		CHECKED		FINAL APPROVAL	
TOLERANCES ON							FINISH & SPEC. NO.		ELEC. DES. APP.		MECH. DES. APP.		TZ-107 K			
FRAC. ± 1/64 DEC. ± .005 ANGLES ± 1/2°																