

TMC PART NO.	SYMBOL	FUNCTION	OPER. FREQ. RANGE	USED ON	QUANTITY
TZ 162-11	T203	2 <sup>ND</sup> R.F. TRANS.	10-12 KC	VLR-1	1
TZ 162-13	T203	2 <sup>ND</sup> R.F. TRANS.	12-14 KC	VLR-1	1
TZ 162-16	T203	2 <sup>ND</sup> R.F. TRANS.	14-18 KC	VLR-1	1
TZ 162-21	T203	2 <sup>ND</sup> R.F. TRANS.	18-24 KC	VLR-1	1
TZ 162-27	T203	2 <sup>ND</sup> R.F. TRANS.	24-30 KC	VLR-1	1
TZ 162-60	T203	2 <sup>ND</sup> R.F. TRANS.	55-65 KC	VLR-1	1

REVISIONS						
ZONE	SYM	DESCRIPTION	DATE	E.M.N. NO.	DRAFT	CHKD
#	X1	TZ-162-60 ADDED TO CHARTS	1/19/63	1		
H5	X2	TZ-162-60, OPER. RANGE WAS 54-66 KC TZ-162-60, N1 TURNS WAS 3, N3 TURNS WAS 3	2/20/64	2		
	O	ORIGINAL RELEASE FOR PRODUCTION	5/12/64	0		

**SPECIFICATIONS :** F-TUNED

WINDING DATA \*1 (N<sub>1</sub>): LINK, PRIMARY, C.T.  
 NOMINAL INDUCTANCE - SEE CHART.  
 NO. OF TURNS - SEE CHART

WINDING DATA \*2 (N<sub>2</sub>): MAIN WINDING, SECONDARY.  
 NOMINAL INDUCTANCE - SEE CHART  
 NO. OF TURNS - SEE CHART

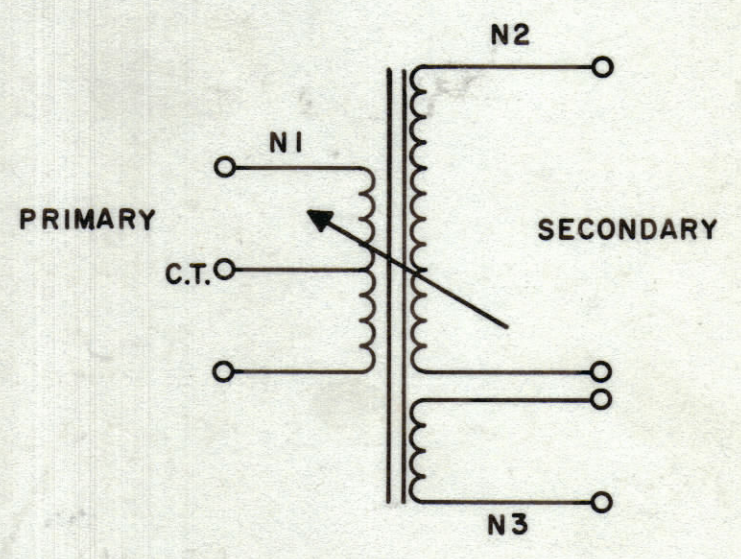
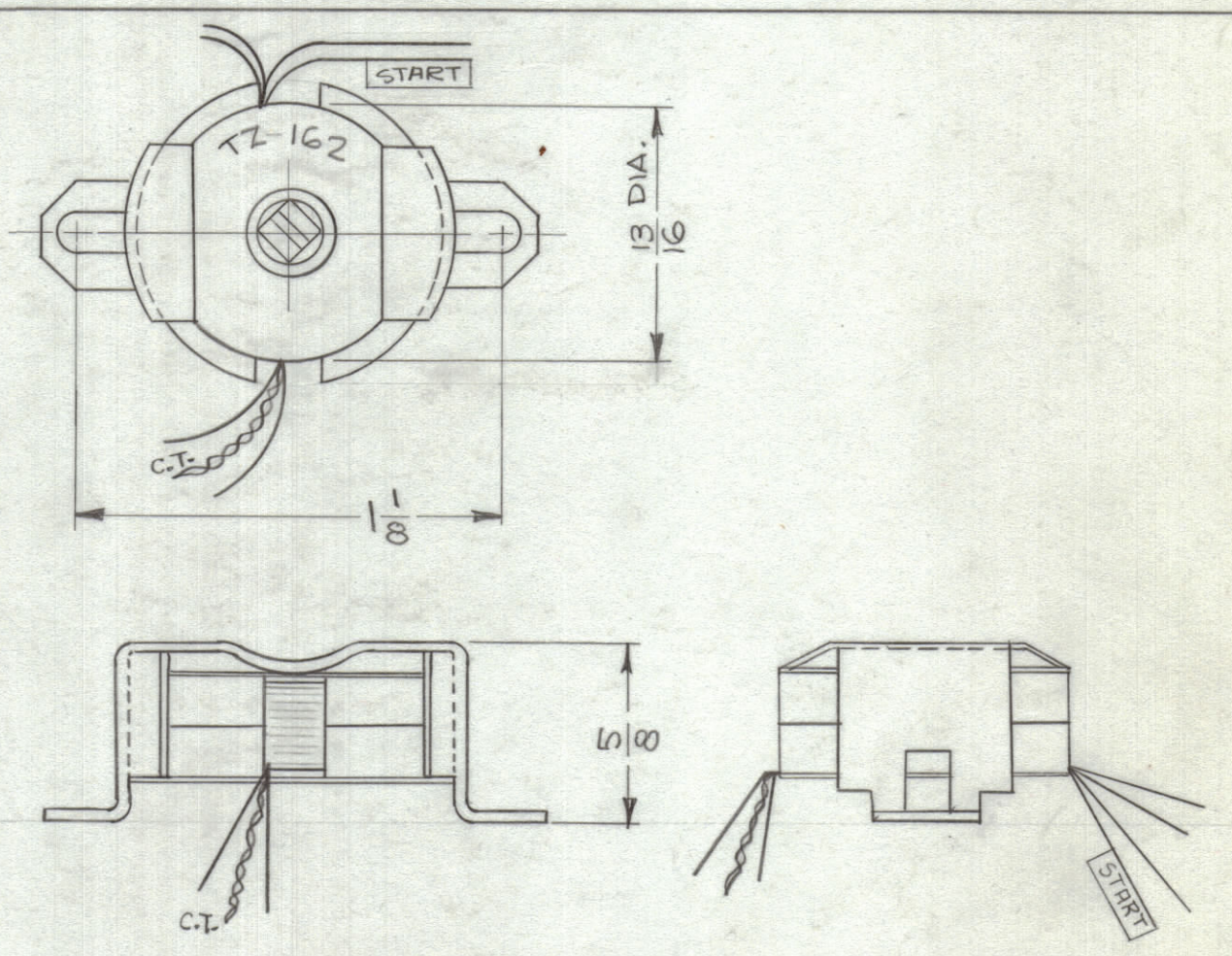
WINDING DATA \*3 (N<sub>3</sub>): LINK, SECONDARY.  
 NOMINAL INDUCTANCE - SEE CHART.  
 NO. OF TURNS - SEE CHART  
 NO. OF TAPS - 2  
 NO. OF TURNS TAPPED - SEE CHART.

COIL FORM DATA:  
 MATERIAL - BOBBIN, NYLON

TUNING DEVICES:  
 QUANTITY - 1  
 TYPE - ADJUSTABLE FERRITE CORE

CASE DATA:  
 MATERIAL - NICKEL SILVER

TERMINALS:  
 QUANTITY - 7  
 TYPE - N<sub>1</sub> AND N<sub>3</sub>, 2" WIRE LEADS,  
 N<sub>2</sub>, 3" WIRE LEAD.



**SCHEMATIC DIAGRAM**

TMC PART NO.	WINDING DATA #1 (N <sub>1</sub> )		WINDING DATA #2 (N <sub>2</sub> )		WINDING DATA #3 (N <sub>3</sub> )	
	NOM. IND.	NO. OF TURNS	NOM. IND.	NO. OF TURNS	NOM. IND.	NO. OF TURNS
TZ 162-11	N. R.	18	3.3	73	N. R.	13
TZ 162-13	N. R.	16	2.9	69	N. R.	11
TZ 162-16	N. R.	14	2.3	61	N. R.	14
TZ 162-21	N. R.	12	1.8	54	N. R.	8
TZ 162-27	N. R.	8	1.4	48	N. R.	6
TZ 162-60	N. R.	6	0.5	29	N. R.	4

N.R. = NOT RATED

**NOTES**

SEE CHART	SEE CHART	A 3212
Q'TY./UNIT	MODEL USED ON	ASSY. NO.
SCALE 4A-3271	CODE A	
THE CONTENTS OF THIS DRAWING ARE THE EXCLUSIVE PROPERTY OF THE TECHNICAL MATERIEL CORP. ITS UNAUTHORIZED USE OR REPRODUCTION IN WHOLE OR IN PART IS STRICTLY FORBIDDEN.		

REQ'D.	ITEM	PART NUMBER	DESCRIPTION	SYMBOL
<b>M. GELLMAN LIST OF MATERIAL</b>				
MATERIAL		THE TECHNICAL MATERIEL CORP. MAMARONECK, NEW YORK		
FINISH		TITLE TRANSFORMER, R.F. TUNED		
UNLESS OTHERWISE SPECIFIED DIMENSIONS ARE IN INCHES AND INCLUDE CHEMICALLY APPLIED OR PLATED FINISHES	DRAWN 8-5-63	DATE	FINAL APPROVAL	DATE
DECIMALS X ± .05 .XX ± .01 .XXX ± .005	CHECKED @	DATE 5-8-64		
FRACTIONS ± 1/64 ANGLES ± 0° 30'	ELECT. DES. MECH. DES.	DATE	TZ 162	0
TOLERANCES			SHEET	REV. LTR.

TZ-162-0

**STANDARD DRAWING**