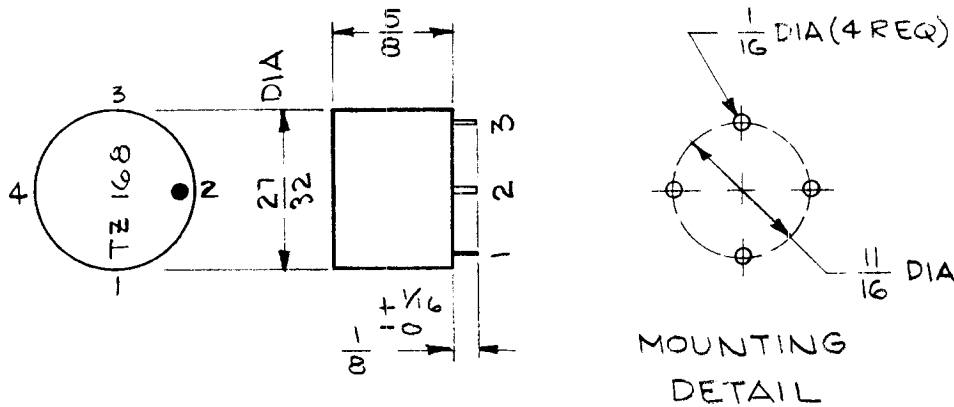


SYMBOL	FUNCTION	OPER. FREQ.	USED ON	REQ	REQ. PER UNIT	USED ON			TZ 168	0
						MODEL	ASS'Y. NO.	DATE		
T648	10 MC AUTO TRANS.	10 MC	LFS-1	5	—	SEE CHART	—	10-4-63		



TRANSFORMER, R. F. FIXED

WINDING DATA:

WINDING NO. 1

NOM. IND. - 1.57 uh

NO. OF TURNS - 15

NO. OF TAPS - 1

NO. OF TURNS TAPPED - 6

COIL FORM DATA:

MATERIAL - POWDERED IRON

CASE DATA:

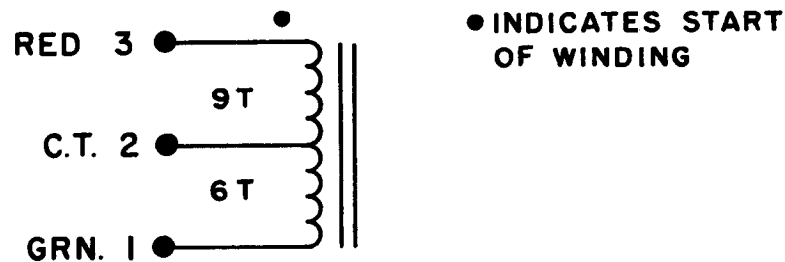
MATERIAL - POTTED

COLOR - RED

TERMINAL DATA:

QUANTITY - 4

TYPE - STAKED LUGS



● INDICATES START OF WINDING

— SCHEMATIC DIAGRAM —

REQ.	ITEM	PART NO.	M. GELLMAN	DESCRIPTION	SYMBOL			
				THE TECHNICAL MATERIEL CORP. MAMARONECK. NEW YORK				
		SEE SPECS.		TRANSFORMER, R.F. FIXED				
0	ORIGINAL RELEASE	7-27-64	GDL					
SYM	DESCRIPTION	DATE	CH. NO.	DRAFTS	CHECKER	ENG. APP.		
UNLESS OTHERWISE SPECIFIED DIMENSIONS ARE IN INCHES AND INCLUDE CHEMICALLY APPLIED OR PLATED FINISHES		SCALE DO NOT SCALE						
DECIMALS .X ± .05 .XX ± .01 .XXX ± .005	TOLERANCES	FRACTIONS ± 1/64 ANGLES ± 0° 30'	CODE A	2A 3451				
				TYPE & TEMPER	HEAT TREAT. SPEC.	DRAWN	CHECKED	FINAL APPROVAL
				FINISH & SPEC. NO.	ELEC. DES. APP.	MECH. DES. APP.	TZ 168 0	