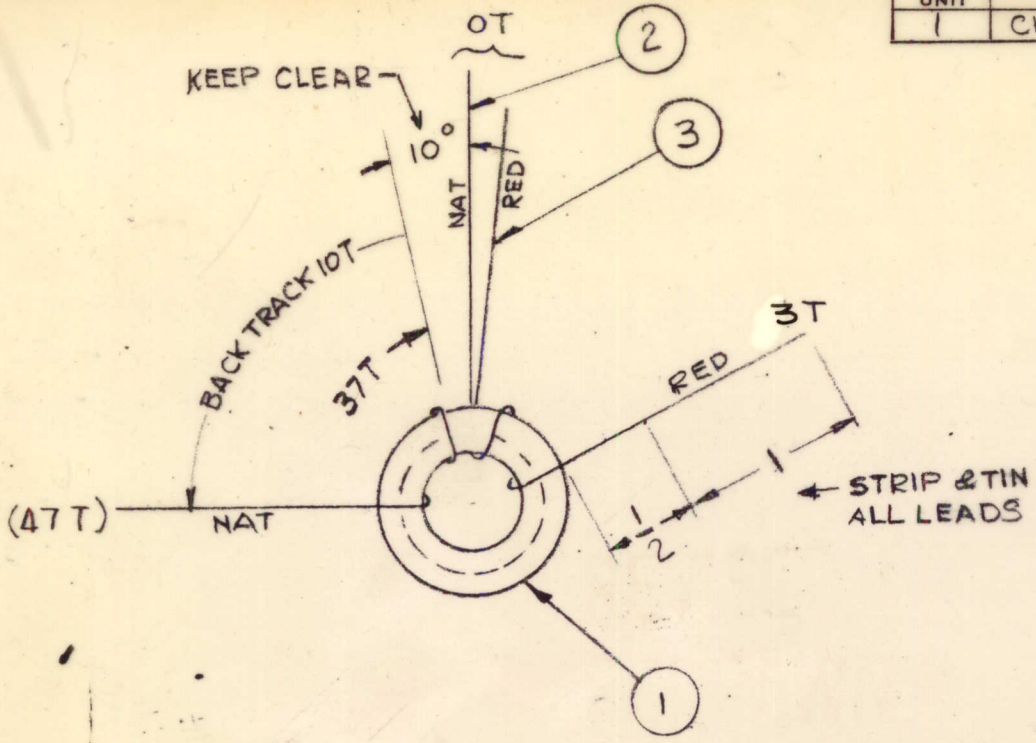


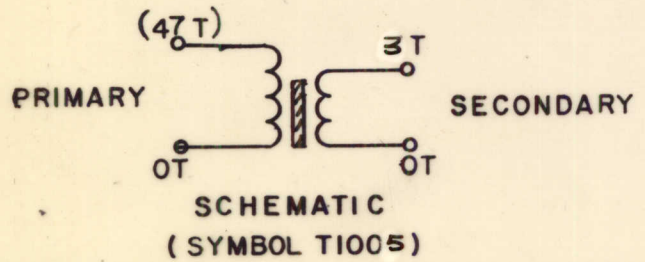
REQ. PER UNIT	USED ON			TZ 187	A
	MODEL	ASS'Y. NO.	DATE		
1	CHG-3	AX549	8-18-65		



- PROCEDURE -
- 1- WIND PRIMARY IN THE DIRECTION SHOWN, EQUALLY SPACED OVER THE ANGLE SHOWN.
 - 2- WIND SECONDARY OVER (ON TOP OF) PRI. AS SHOWN. NUMBER OF TURNS AS SHOWN.
 - 3- NUMBER OF TURNS OF PRIMARY IS APPROX. AND TURNS MAY BE ADDED OR REMOVED TO MEET INDUCTANCE.
 - 4- STAKE LEADS SECURELY WITH GL 102.
 - 5- BAKE FOR 1/2 HR. AT 215°F. TO REMOVE MOISTURE.
 - 6- COAT COIL & CORE WITH GL 102 & BAKE 1/2 HR. AT 215°F.

ELEC. SPECIFICATION

PRI. $L = 7.8 \mu h \pm 0.17 \mu h$
 $Q = 180 \pm 20$ AT 3.5 MC.
 $C_{dist} 1.2 \pm 0.6$ MMF



X	4	GL 102.	Q-MAX
X	3	W141-26-2	WIRE, ELEC. MAG.
X	2	W141-24-9	WIRE, ELEC. MAG.
1	1	CI 127-1	CORE, TOROID

A	COMP. REV. & REDRAWN	8-18-65	14702	E	<i>[Signature]</i>	<i>[Signature]</i>
SYM	DESCRIPTION	DATE	CH. NO.	DRAFTS	CHECKER	ENG. APP.
UNLESS OTHERWISE SPECIFIED DIMENSIONS ARE IN INCHES AND INCLUDE CHEMICALLY APPLIED OR PLATED FINISHES		SCALE	DO NOT SCALE			
DECIMALS	FRACTIONS	CODE				
.X ± .05	± 1/64	X				
.XX ± .01	ANGLES					
.XXX ± .005	± 0° 30'					

REQ. ITEM	PART NO.	J. ANGER	DESCRIPTION	SYMBOL
STOCK SIZE		THE TECHNICAL MATERIEL CORP. MAMARONECK. NEW YORK		
MATERIAL		TRANSFORMER, RF INPUT BAND #2		
TYPE & TEMPER	HEAT TREAT. SPEC.	DRAWN	CHECKED	FINAL APPROVAL
		<i>[Signature]</i>	<i>[Signature]</i>	<i>[Signature]</i>
FINISH & SPEC. NO.		ELEC. DES. APP.	MECH. DES. APP.	

TZ 187 A