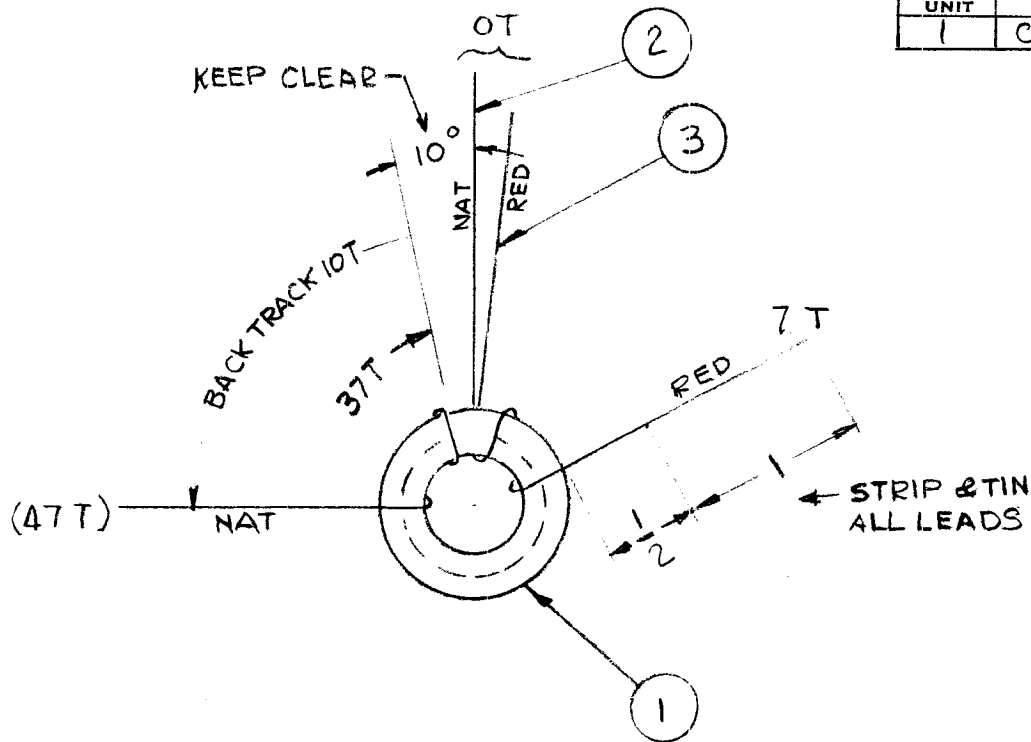


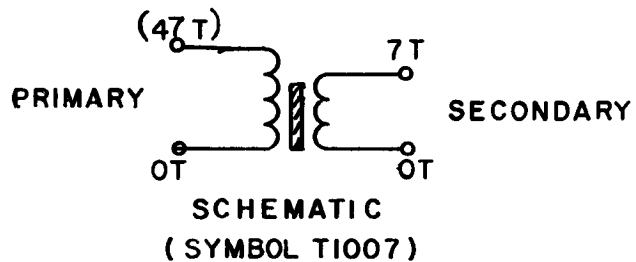
REQ. PER UNIT	USED ON			TZ 195	Ø
	MODEL	ASS'Y. NO.	DATE		
1	CHG-3	AX549	2-16-65		



- PROCEDURE -
- 1- WIND PRIMARY IN THE DIRECTION SHOWN, EQUALLY SPACED OVER THE ANGLE SHOWN.
 - 2- WIND SECONDARY OVER (ON TOP OF) PRI. AS SHOWN. NUMBER OF TURNS AS SHOWN.
 - 3- NUMBER OF TURNS OF PRIMARY IS APPROX. AND TURNS MAY BE ADDED OR REMOVED TO MEET INDUCTANCE.
 - 4- STAKE LEADS SECURELY WITH GL102.
 - 5- BAKE FOR 1/2 HR. AT 215°F. TO REMOVE MOISTURE.
 - 6- COAT COIL & CORE WITH GL102 & BAKE 1/2 HR. AT 215°F.

ELEC. SPECIFICATION

L = 7.8 μ h \pm 0.17 μ h
 PRI. Q = 180 \pm 20 AT 3.5 MC.
 C_{dist} 1.2 \pm 0.6 MMF



X	4	GL102	Q-MAX
X	3	W141-26-2	WIRE, ELEC. MAG.
X	2	W141-24-9	WIRE, ELEC. MAG.
1	1	CI127-1	CORE, TOROID

SYM	DESCRIPTION	DATE	CH. NO.	DRAFTS	CHECKER	ENG. APP.	REQ. ITEM	PART NO.	J. ANGER DESCRIPTION	SYMBOL	
Ø	ORIGINAL RELEASE FOR PRODUCTION	4-14-65	Ø	92					THE TECHNICAL MATERIEL CORP. MAMARONECK, NEW YORK TRANSFORMER, RF OUTPUT BAND*2		
X	COMPLETELY REVISED	3-15-65		G.D.L.	<i>[Signature]</i>	<i>[Signature]</i>					
X	EXPER. RELEASE	2-16-65		G.D.L.							
UNLESS OTHERWISE SPECIFIED DIMENSIONS ARE IN INCHES AND INCLUDE CHEMICALLY APPLIED OR PLATED FINISHES							SCALE		DO NOT SCALE		
							TYPE & TEMPER	HEAT TREAT. SPEC.	DRAWN	CHECKED	FINAL APPROVAL
DECIMALS X \pm .05 .XX \pm .01 .XXX \pm .005 TOLERANCES							FRACTIONS \pm 1/64 ANGLES \pm 0° 30' TOLERANCES		CODE	X G.D.L. ²⁻¹⁶⁻⁶⁵ <i>[Signature]</i> <i>[Signature]</i>	
							FINISH & SPEC. NO.		ELEC. DES. APP.	MECH. DES. APP.	TZ 195 Ø