

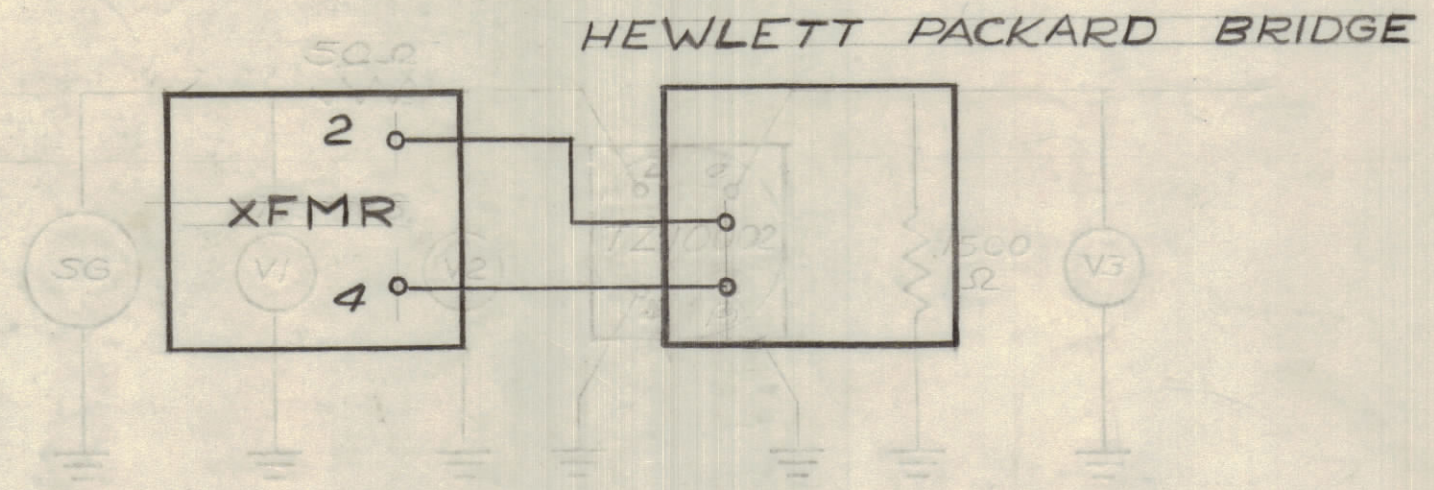
IF IT IS FOUND DESIRABLE TO CHANGE ANY TOLERANCE OR OTHER DETAIL SPECIFIED ON THIS DRAWING NOTIFY THE PURCHASER PROMPTLY.		DIMENSIONS IN INCHES UNLESS OTHERWISE SPECIFIED					
MAXIMUM ALLOWABLE TOLERANCES HAVE BEEN DETERMINED AND DEVIATIONS WILL BE CAUSE FOR REJECTION. REMOVE ALL BURRS AND SHARP EDGES.							
ISSUE	ITEM	CHANGED FROM	DATE	CN. NO.	DRAFTS	CHECKER	ENG. APP.
0		REL TO PROD	FEB 6/68		AP		

REQ.	ITEM	PART NO.	DESCRIPTION	SYMBOL
1	1	CJ 10011-1-Q1	CORE,	
AR	2	WI 123-28	WIRE, MAGNET	
1	3	BP10002-1	MODU-CON	
AR	4	GL 130	Q-DOPE	
AR	5	GL10005-3110H	ENCAPSULANT	
1	6	CC10011-5	CAPACITOR	
1	7	NP10157	NAMEPLATE	

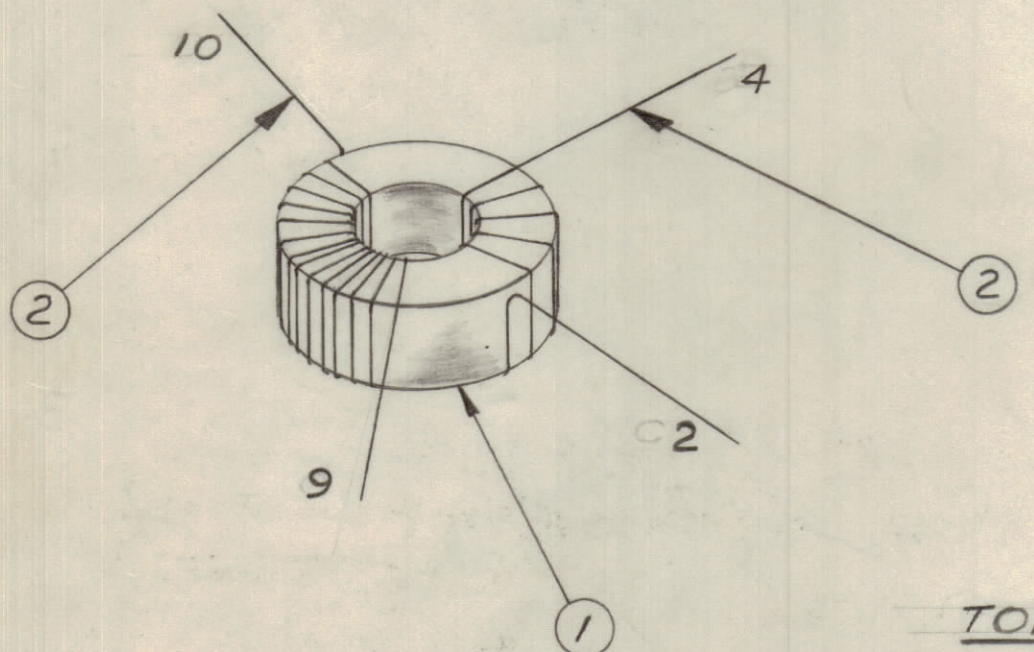
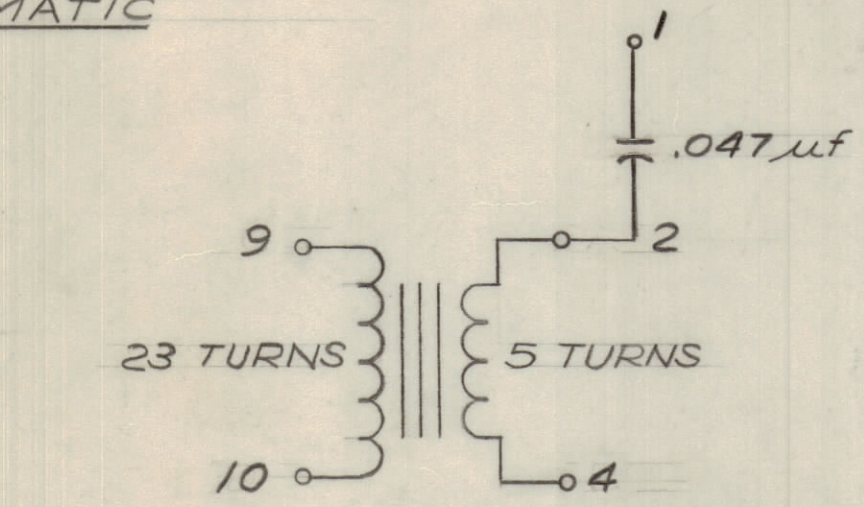
TEST DATA

- 1 SET UP AS SHOWN IN SCHEMATIC BELOW.
- 2 SET RANGE OF BRIDGE TO μ H AND FUNCTION TO LS - AUTO
- 3 RECORD V_1 AND V_3 READINGS.
- 3 MEASURE INDUCTANCE L_p BETWEEN 2 & 4

TEST SET UP



SCHEMATIC

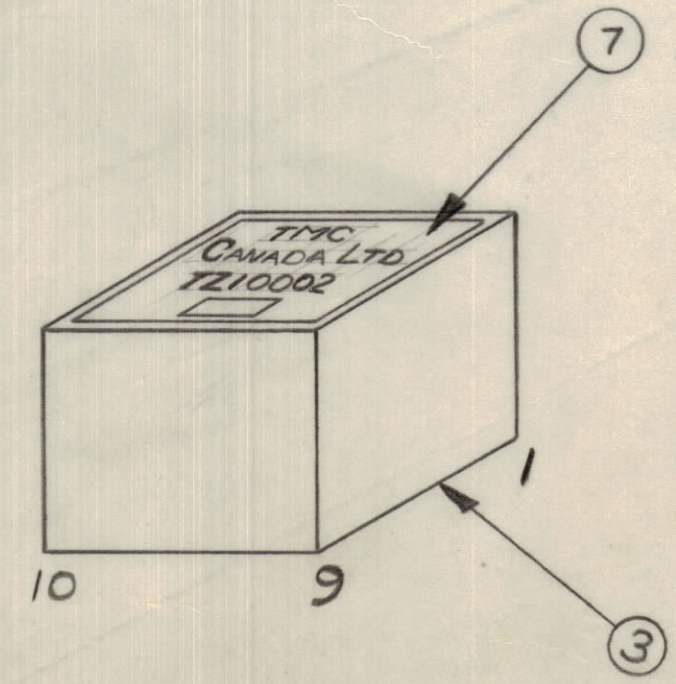
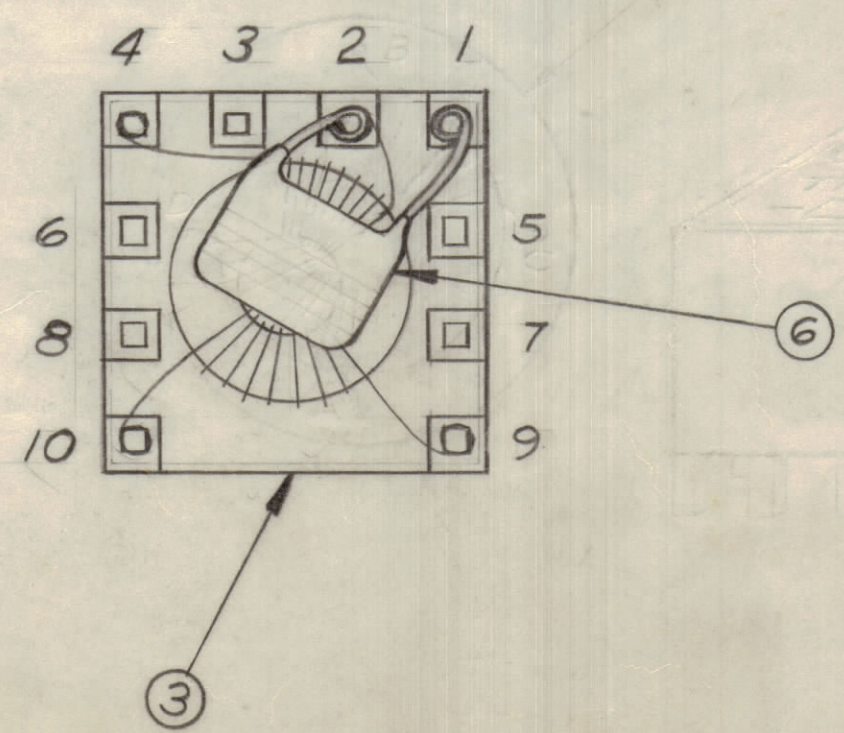


ASSEMBLY INSTRUCTIONS

- 1 WIND 23 TURNS OF ITEM 2 ON ITEM 1; WIND 5 TURNS OF ITEM 2 ON ITEM 1 AND COAT WINDING WITH ITEM 4.
- 2 MOUNT TRANSFORMER ON BASE AND CONNECT WIRES TO CORRESPONDING NUMBERED PINS AND INSTALL ITEM 6 BETWEEN PINS 2 AND 1
- 3 TEST TRANSFORMER.
- 4 POT TRANSFORMER USING ITEM 5 AS PER SPEC S10149.
- 5 TEST TRANSFORMER.

TZ10002 ϕ

TOP VIEW WITHOUT COVER



SPECIFICATIONS

"BEFORE POTTING" POTTING.

$L_p = 3 \mu H \pm 0.5 \mu H.$

1.75MM 40 VAC 45 to 55 18 to 23

TOLERANCES		SCALE: N.T.S.
ALL OTHERS	DEC. DIM. $\pm .X \pm .05$ FRAC. DIM. $\pm \frac{1}{64}$ ANGULAR DIM. $\pm 0^\circ 30'$	DRILL, PUNCH, COMMERCIAL STOCK SIZES AND MANUFACTURERS TOLERANCES ARE NOT INCLUDED.

SMR-5			
STR-5	062/68		12 DEC. 67
MODEL	PROJECT NO.	ASS'Y. NO.	DATE

STOCK SIZE		TMC (Canada) LIMITED OTTAWA ONTARIO	
MATERIAL		I.F. TRANSFORMER	
TYPE & TEMPER		AP	A.S.
HEAT TREAT. SPEC.		CHECKED	FINAL APPROVAL
FINISH & SPEC. NO.		TZ10002 ϕ	