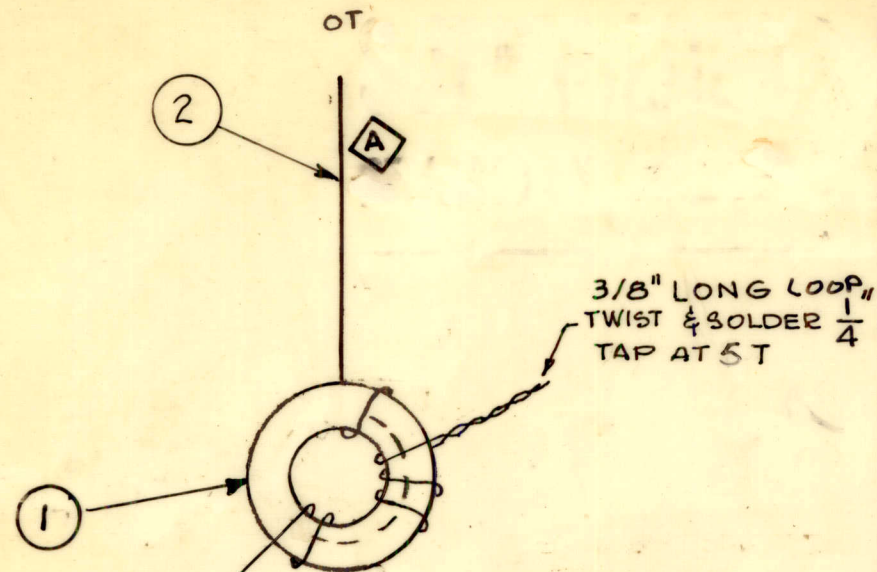
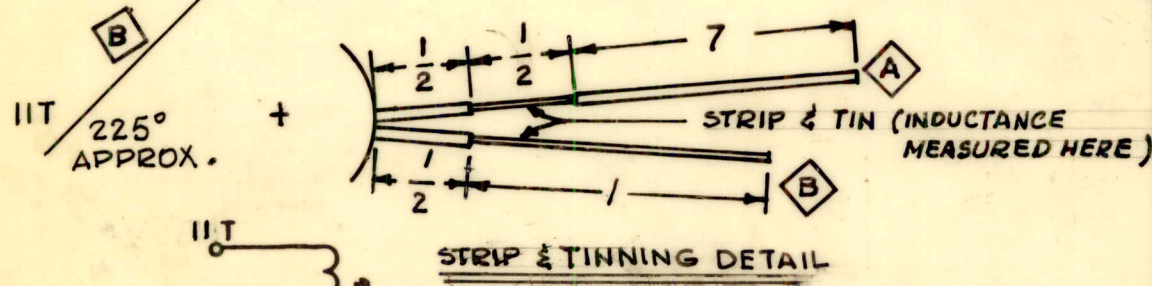


REQ. PER UNIT	USED ON			TZ208	C
	MODEL	ASS'Y. NO.	DATE		
2	CHG-3	AX 554	2-16-65		



- PROCEDURE -
- 1- WIND 11 TURNS IN THE DIRECTION SHOWN, EQUALLY SPACED OVER THE ANGLE SHOWN, WITHOUT OVERLAPPING TURNS.
 - 2-TAP AT THE NUMBER OF TURNS AS SHOWN.
 - 3-TURNS MAY BE PUSHED TOGETHER OR SPREAD APART AS NEEDED TO MEET INDUCTANCE.
 - 4- STAKE LEADS SECURELY WITH GL10Z.
 - 5- BAKE FOR 1/2 HR. AT 215°F. TO REMOVE MOISTURE
 - 6-COAT COIL & CORE WITH GL10Z & BAKE 1/2 HR. AT 215°F.



ELECTRICAL SPECIFICATION

$L = 0.625 \pm 0.013 \mu h$
 $Q = 210 \pm 25$ AT 20MC.
 $C_{dist} = 0.6 \pm 0.5$ MMF

SYM	DESCRIPTION	DATE	CH. NO.	DRAFTS	CHECKER	ENG. APP.
C	SCHEMATIC SYM. T1018 ADDED	10/4/65	14913	H.V.A.		
B	5T WAS 4T, LOOP ADDED	5/16/65	14553			
A	DIMS. 1/2 & 1" DELETED "A", "B" IND. & DETAIL ADDED	6-24-65	14338	G.D.L.		
Ø	ORIGINAL RELEASE FOR PRODUCTION	4-14-65	Ø	Ø		
X	COMPLETELY REVISED	3-15-65		G.D.L.		
X	EXPER. RELEASE	2-26-65		G.D.L.		

UNLESS OTHERWISE SPECIFIED
DIMENSIONS ARE IN INCHES AND INCLUDE
CHEMICALLY APPLIED OR PLATED FINISHES

SCALE DO NOT SCALE

DECIMALS: .X ± .05, .XX ± .01, .XXX ± .005
FRACTIONS: ± 1/64, ANGLES: ± 0° 30'

TOLERANCES

CODE: Δ

REQ. ITEM	PART NO.	J-ANGER DESCRIPTION	SYMBOL
X 4	BS100	SOLDER, TIN ALLOY	
X 3	GL10Z	Q-MAX	
X 2	WI141-22-9	WIPE, ELEC. MAG.	
1 1	CI127-1	CORE, TOROID	

THE TECHNICAL MATERIEL CORP.
MAMARONECK, NEW YORK

TRANSFORMER, RF
DRIVER BAND #7

TYPE & TEMPER	HEAT TREAT. SPEC.	DRAWN	CHECKED	FINAL APPROVAL
		<i>Junger</i>		<i>[Signature]</i>

FINISH & SPEC. NO.

ELEC. DES. APP. MECH. DES. APP.

TZ208 C