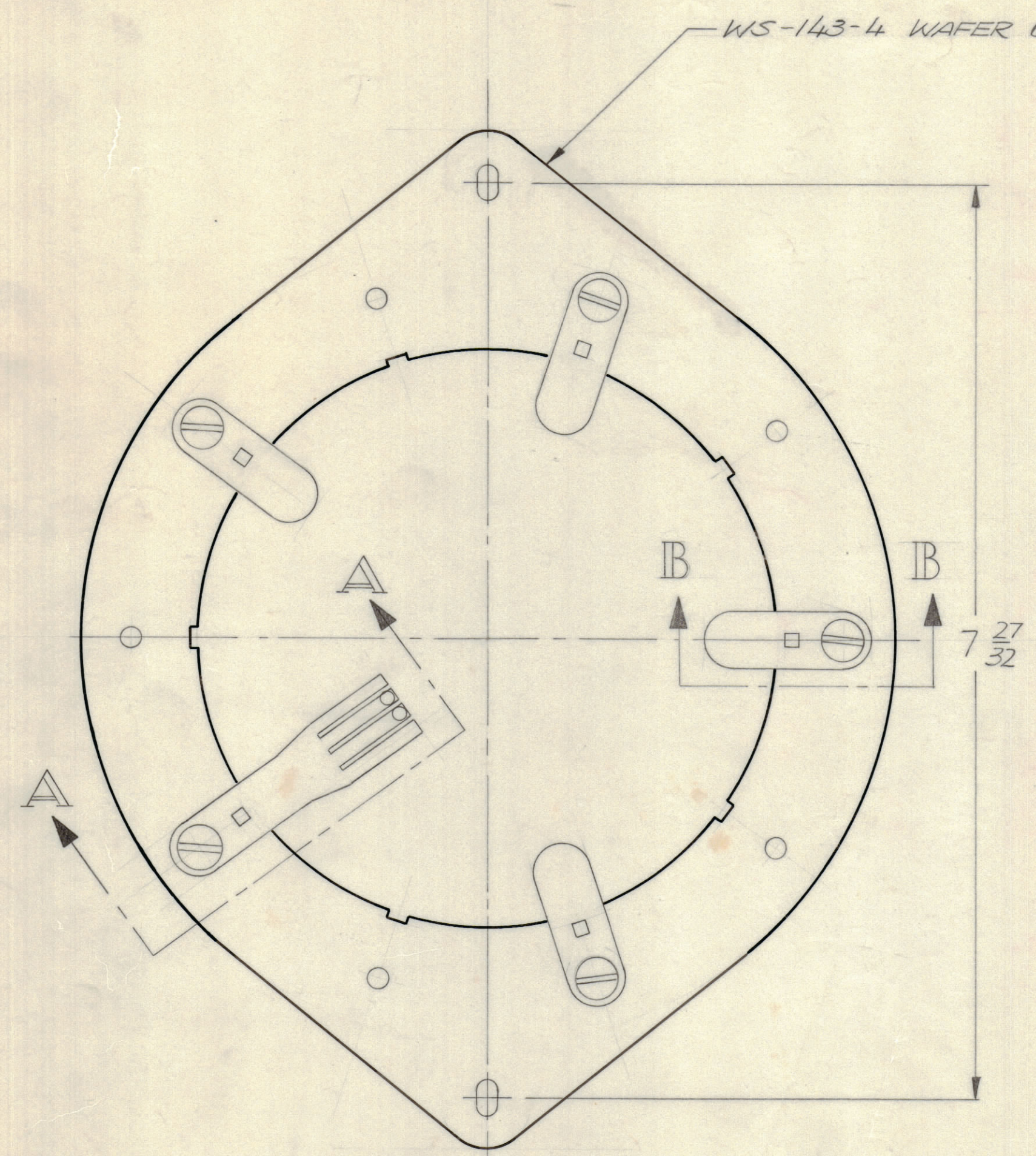


REVISIONS							
E.M.N.NO	DRAFT	CHKD	ZONE	LTR	DESCRIPTION	DATE	APPROVED
	W			X	ORIGINAL RELEASE FOR PRODUCTION	9/2/71	P.E.S.
20553	GE			A	ADDED NOTES FOR ORDERING INFO.	3-6-72	EJ

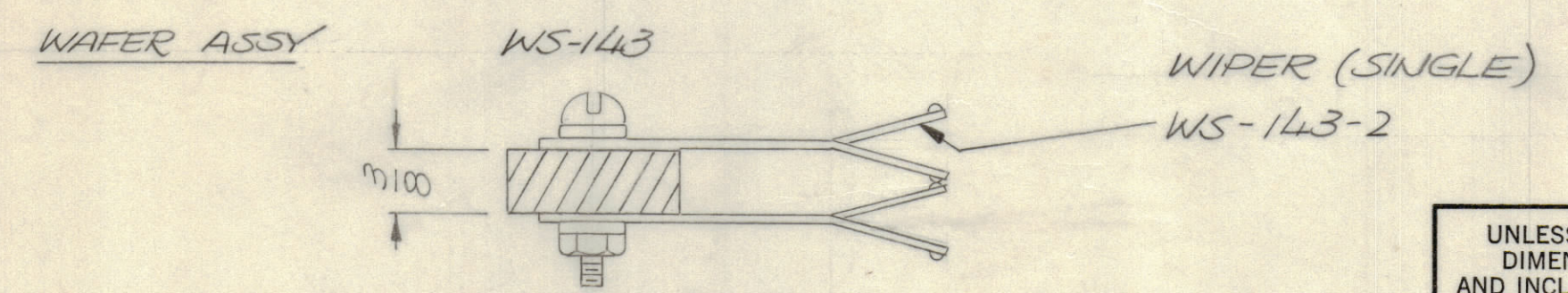
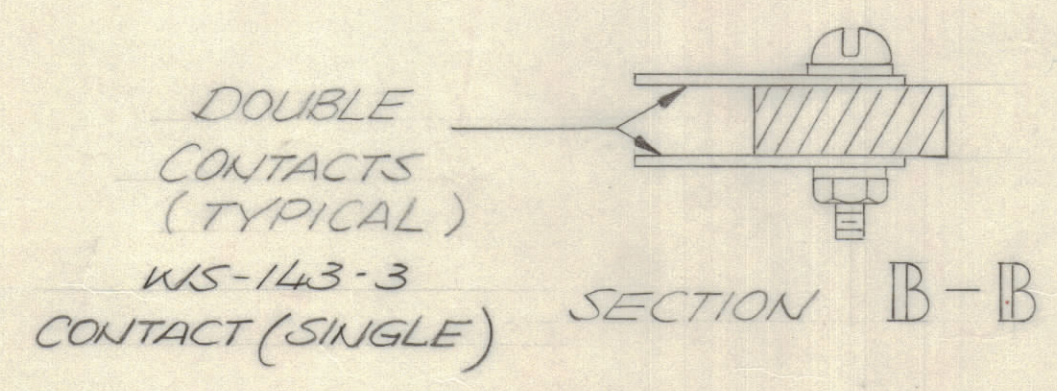


FOR ORDERING INFORMATION USE FOLLOWING

- WS 143 WAFER AS SHOWN
- WS 143-2 WIPER SINGLE
- WS 143-3 CONTACT SINGLE
- WS 143-4 WAFER W/O WIPER OR CONTACT

SPECIFICATIONS

1. 20,000 V PEAK FLASHOVER AT 60 CPS.
2. 80 AMP CURRENT CARRYING CAPACITY.
3. CURRENT CARRYING MEMBERS SILVER PLATED.
4. COIN SILVER CONTACT SHOES.
5. DOUBLE CONTACTS & DOUBLE ROTOR WIPERS (MODEL 90 SWITCH PARTS)



QTY / UNIT	MODEL USED ON	ASS'Y NO.
	MAT-5 BCT-10KA	AS-133
APPLICATION		
	CODE	

NOTICE TO PERSONS RECEIVING THIS DRAWING
 THE TECHNICAL MATERIEL CORPORATION claims proprietary right in the material disclosed hereon. This drawing is issued in confidence for engineering information only and may not be reproduced or used to manufacture anything shown hereon without permission from THE TECHNICAL MATERIEL CORPORATION to the user. This drawing is loaned for mutual assistance and is subject to recall at any time.

QTY. REQ.	ITEM	PART NO.	DESCRIPTION	SYMBOL
F. BUDETTI LIST OF MATERIAL				
FINAL APPROVAL [Signature]			DATE 3/24/71	
MECH. DES. [Signature]			DATE 3/24/71	
ELECT. DES.			DATE	
CHECKED			DATE	
DRAWN EVANGELIST			DATE 3/18/71	
MATERIAL S401-113 (MODEL 90)			SIZE C	ISSUE A
FINISH			CODE IDENT NO. 82679	DWG NO. WS 143
SCALE 1:1			SHEET OF	

D
C
B
A

D
C
B
A