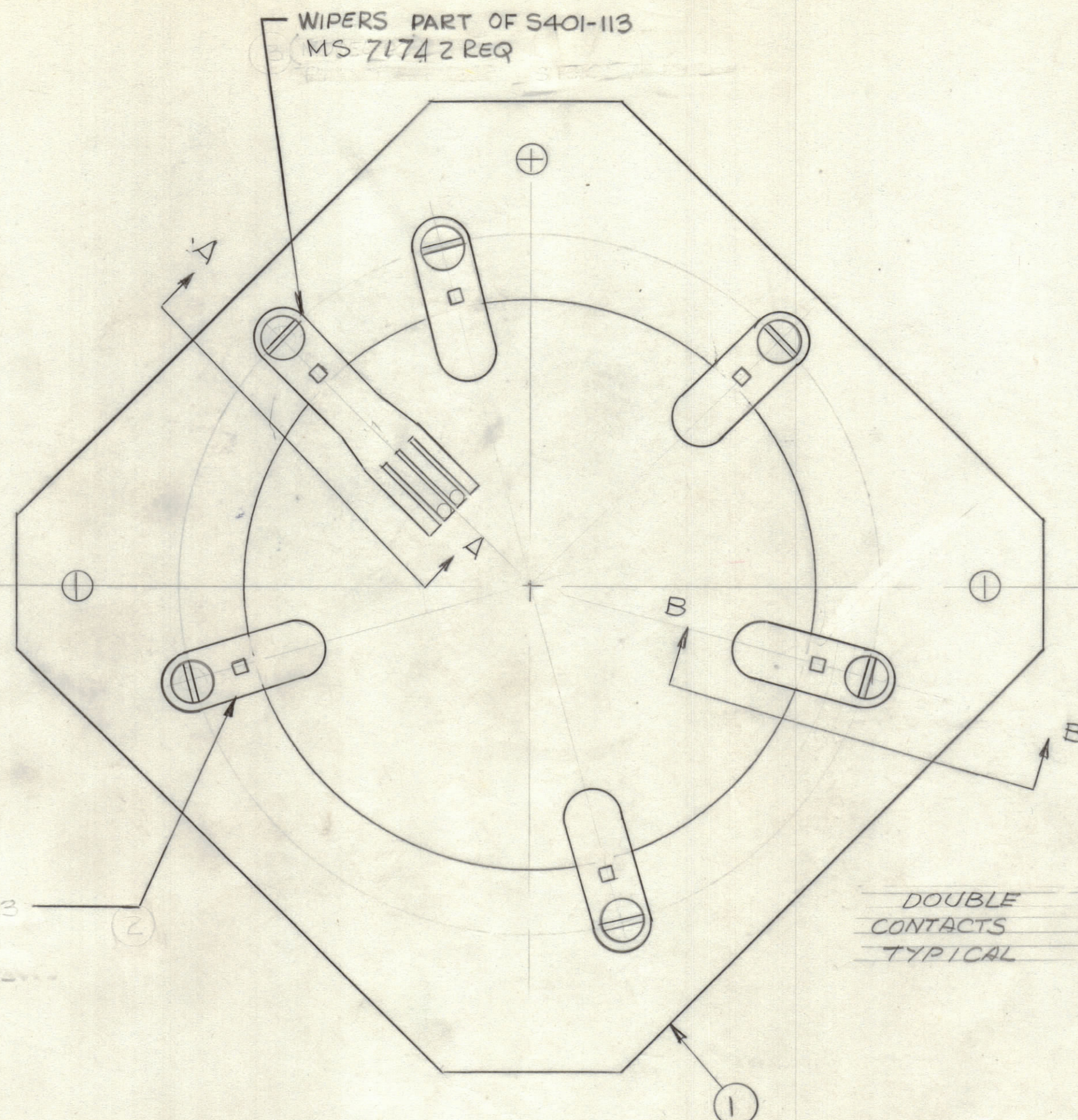
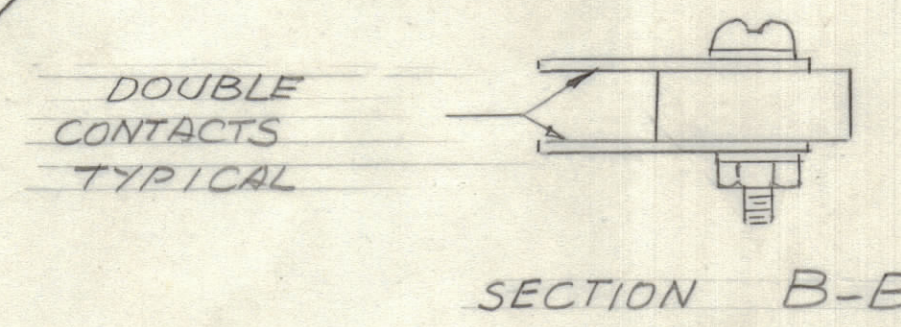


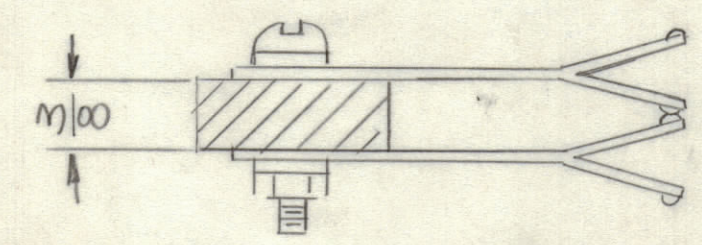
REVISIONS						
ZONE	LTR	DESCRIPTION	DATE	E.M.N.NO	DRAFT	CHKD APPD
Ø		ORIGINAL RELEASE FOR PRODUCTION	3/11-81	~	~	
A		NOTE CLARIFIED	5-1-85	~	G.D.L	



- SPECIFICATIONS
- 1- 20,000 V PEAK FLASHOVER AT 60 CPS
 - 2- 80 AMP CURRENT CARRYING CAPACITY
 - 3- CURRENT CARRYING MEMBERS SILVER PLATED
 - 4- COIN SILVER CONTACT
 - 5- DOUBLE CONTACTS & DOUBLE ROTOR WIPERS



CONTACTS PART MS 401-113
MS 7173 10 Req.



WIPER (SINGLE)

QTY. REQ.	ITEM	PART NO.	DESCRIPTION	SYMBOL
1	1	PX1281	WAFER, BAND SW	

FINAL APPROVAL	DATE
MECH. DES.	DATE
ELECT. DES.	DATE
CHECKED	DATE
DRAWN	DATE

THE TECHNICAL MATERIEL CORP.
MAMARONECK, NEW YORK

WAFER, SWITCH, ROTARY
ASSY

1	MFTA-10KJ5	AS166-1
QTY / UNIT	MODEL USED ON	ASS'Y NO.
APPLICATION		
CODE		

NOTICE TO PERSONS RECEIVING THIS DRAWING
THE TECHNICAL MATERIEL CORPORATION claims proprietary right in the material disclosed herein. This drawing is issued in confidence for engineering information only and may not be reproduced or used to manufacture anything shown hereon without permission from THE TECHNICAL MATERIEL CORPORATION to the user. This drawing is loaned for mutual assistance and is subject to recall at any time.

UNLESS OTHERWISE SPECIFIED
DIMENSIONS ARE IN INCHES
AND INCLUDE CHEMICALLY APPLIED
OR PLATED FINISHES

TOLERANCES ON

DECIMALS	FRACTIONS
.X ± .05	± 1/64
.XX ± .01	ANGLES
.XXX ± .005	± 0° - 30'

MATERIAL

FINISH

SIZE	CODE IDENT.NO.	DWG NO.	ISSUE
C	82679	WS157	A
SCALE	1:1		SHEET OF

D
C
B
A

D
C
B
A