

★

TECHNICAL MANUAL
for
PERFORATOR-READER
MODEL RTKY-1
(TT-477/FRR-72)



THE TECHNICAL MATERIEL CORPORATION
MAMARONECK, N.Y. OTTAWA, ONTARIO

★

FOREWORD

When using the Royal McBee Corporation Reader and Punch service manual and parts catalog, refer to **READER AND PUNCH, MODEL 590.**

PERFORATOR-READER, Model RTKY-1 is a semi-automatic feed tape or card perforator and reader unit.

The PERFORATOR-READER, Model RTKY-1 (hereafter referred to as the RTKY-1) provides synchronous operation to 50 characters per second. Both reader and perforator include reverse feed, accommodating 1 inch, 7/8 inch or 11/16 inch standard tape with 5, 6, 7 or 8 level code structure. A manual index control is provided on perforate and a tape feed control, permitting blank or delete feeding between messages is also provided. Provisions for punched-card feeding is also provided.

The RTKY-1 is housed in a metal case measuring 12 inches long by 10-1/2 inches wide by 6-1/2 inches high. A tape reader deck and a tape perforator deck, each with independent tape tension switches, are located on the front portion of the case for greater accessibility. A tape feed switch is also provided for the punch deck.

PERFORATOR-READER RTKY-1, OPERATING CONTROLS

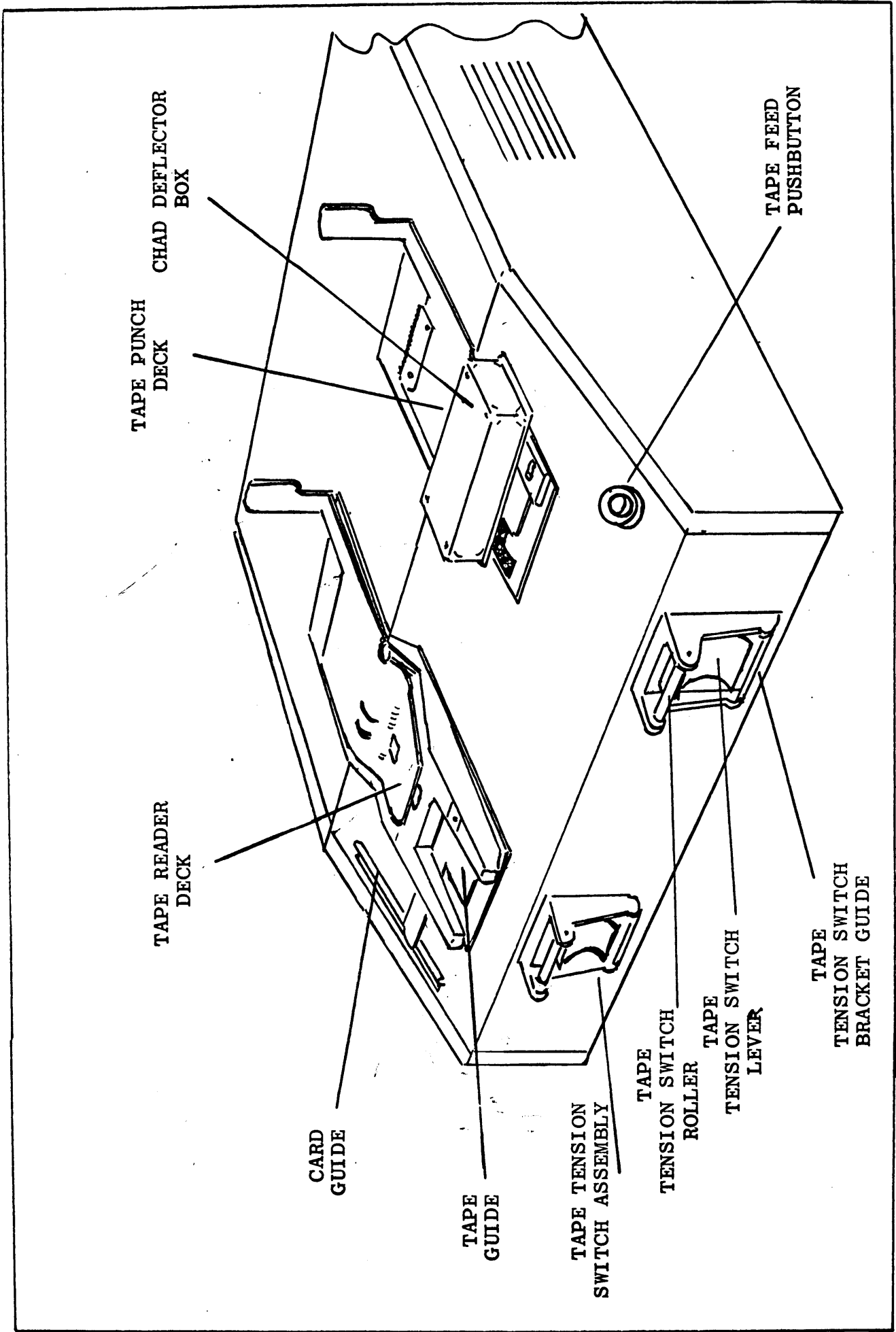
<p align="center">CONTROL (See figure 1)</p>	<p align="center">FUNCTION</p>
<p>Tape Reader Deck</p>	<p>Accepts a pre-punched, 5, 6, 7 or 8 level code structure, 1 inch, 7/8 inch or 11/16 inch standard tape or pre-punched card. See figure A and B.</p>
<p>Tape Punch Deck</p>	<p>Punches any 1 inch, 7/8 inch or 11/16 inch standard tape to 5, 6, 7 or 8 level code structure. Cards may also be punched. See figures C and D.</p>
<p>Card Guide</p>	<p>Used to guide a punched-card through the tape reader deck. See figure B.</p>
<p>Tape Guide</p>	<p>Used to guide a tape into the reader or tape punch deck. Tape is to be placed over the tape guide. A card is placed over the tape guide. A card is placed under the tape guide.</p>
<p>Tape Tension Switch Assembly</p>	<p>Used to guide the tape from the tape supply to the tape reader or tape punch deck.</p> <p>Tape is threaded through the tape tension switch which starts and stops threading when tape tension switch lever is pulled out or pushed in. See figure A.</p>
<p>Tape Tension Switch Roller</p>	<p>Tape is threaded over the tape tension switch roller for smooth and straight tape feeding to the tape reader or tape punch deck. See figure A.</p>
<p>Tape Tension Switch Lever</p>	<p>This lever acts as an ON/OFF switch, acting under tape pressure or manually activated. Tape is to be threaded behind the tape tension switch lever for proper operation.</p>

PERFORATOR-READER RTKY-1, OPERATING CONTROLS (CONT)

CONTROL (See figure 1)	FUNCTION
Tape Tension Switch Lever (cont)	Pull tape tension switch lever out to deenergize tape reader or tape punch deck. Push in for activation. See figure A.
Tape Tension Switch Bracket Guide	Tape is threaded from the tape supply equipment, under and behind the tape tension switch bracket guide. See figure A.
Tape Feed Pushbutton	When pressed, allows card or tape to be drawn through the tape punch deck. Also used to advance tape or card through tape punch deck during punch process, to permit blank or delete feeding between messages. See figure C and D.
Chad Deflector Box	Used to deflect chad is deflected down through unit, emptying through a port at the bottom of the RTKY-1.

Tape Release

*PRESS Down for
Release of TAPE*



PERFORATOR-READER, MODEL RTKY-1.

TAPE READER OPERATING PROCEDURES

PUNCHED-TAPE READ - See figure A.

1. Pull tape tension switch lever (1) out.
2. Slide tape under the tape tension switch bracket guide (2) .
3. Slide tape behind the tape tension switch lever (1) up and over the tape tension switch roller (3) .
4. Place leading edge of tape over the metal tape guide (4) of the tape reader deck.
5. Push tape tension switch lever (1) in.
6. Push tape into tape reader deck until tape reader energizes, drawing tape through reading process.

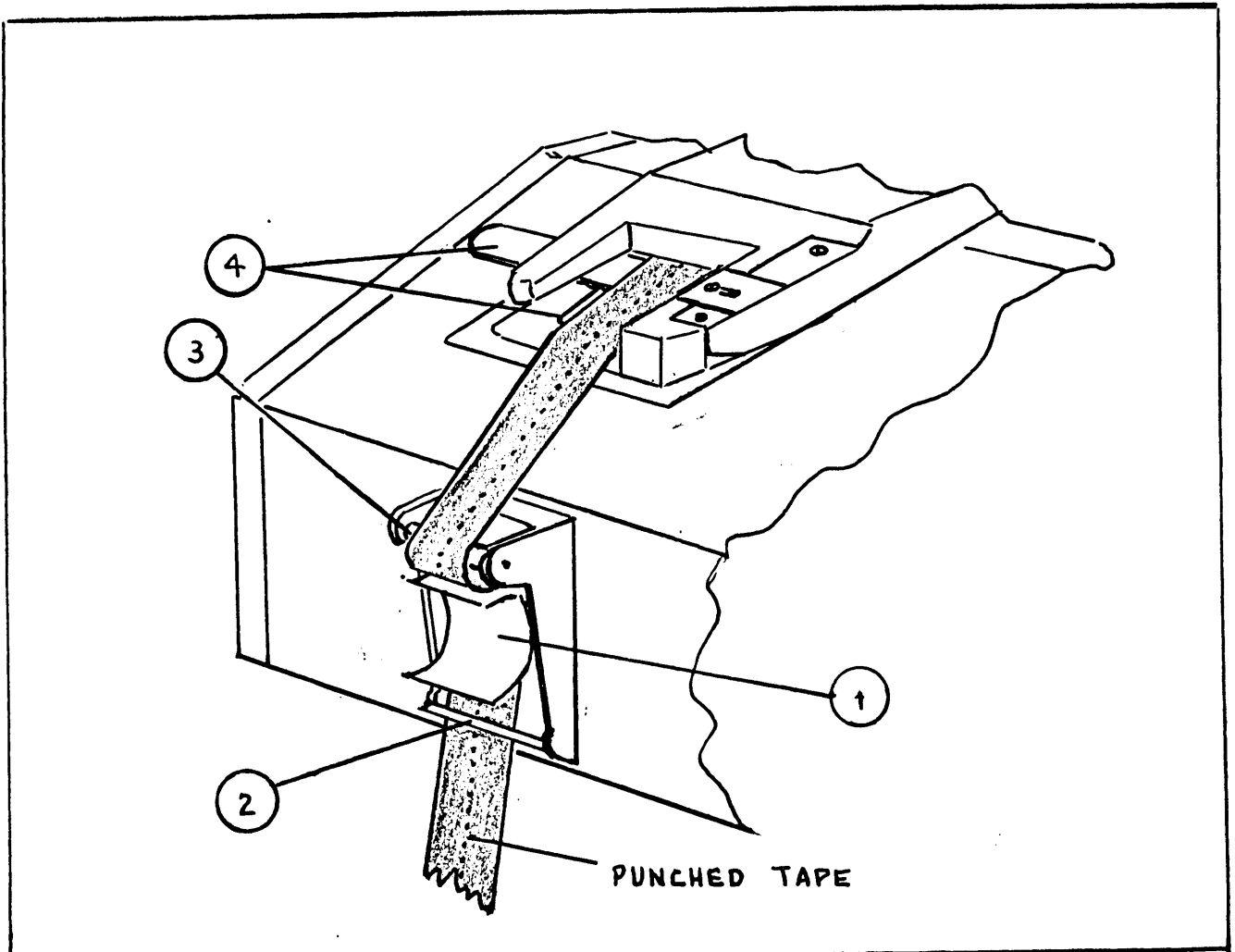


Figure A

PUNCHED-CARD READ - See figure B.

1. Pull tape tension switch lever (1) out.
2. Position punched-card so that the left edge is guided by the card guide (5) .
3. Slide punched-card under the metal tape guide (4) .
4. Push tape tension switch lever (1) in.
5. Push card into tape reader deck until tape reader energizes, drawing card through reading process.

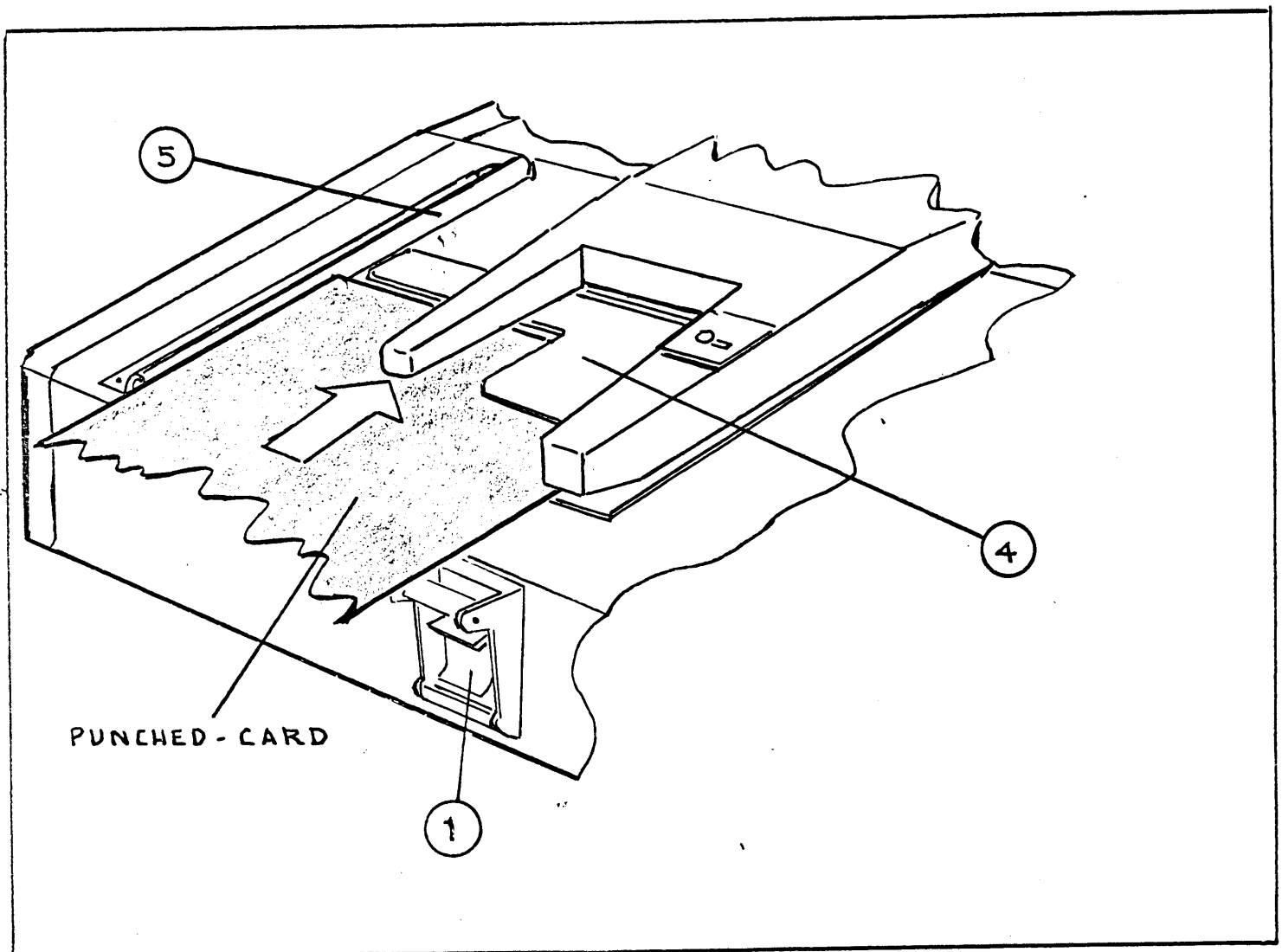


Figure B

TAPE PUNCH OPERATING PROCEDURE

TAPE PUNCH - See figure C.

1. Pull tape tension switch lever ① out.
2. Slide tape under tape tension switch bracket guide ② .
3. Slide tape behind the tape tension switch lever ① up and over the tape tension switch roller ③ .
4. Place leading edge of tape over the metal tape guide ④ of the tape punch deck.
5. Push tape tension switch lever ① in.
6. Push tape into tape punch deck and press tape feed pushbutton ⑤ to start punching process.

NOTE

When using tape feed pushbutton ⑤ to advance tape through punch deck, hold tape tension switch lever ① in, to prevent the rapid tape advance from tripping tape tension switch lever.

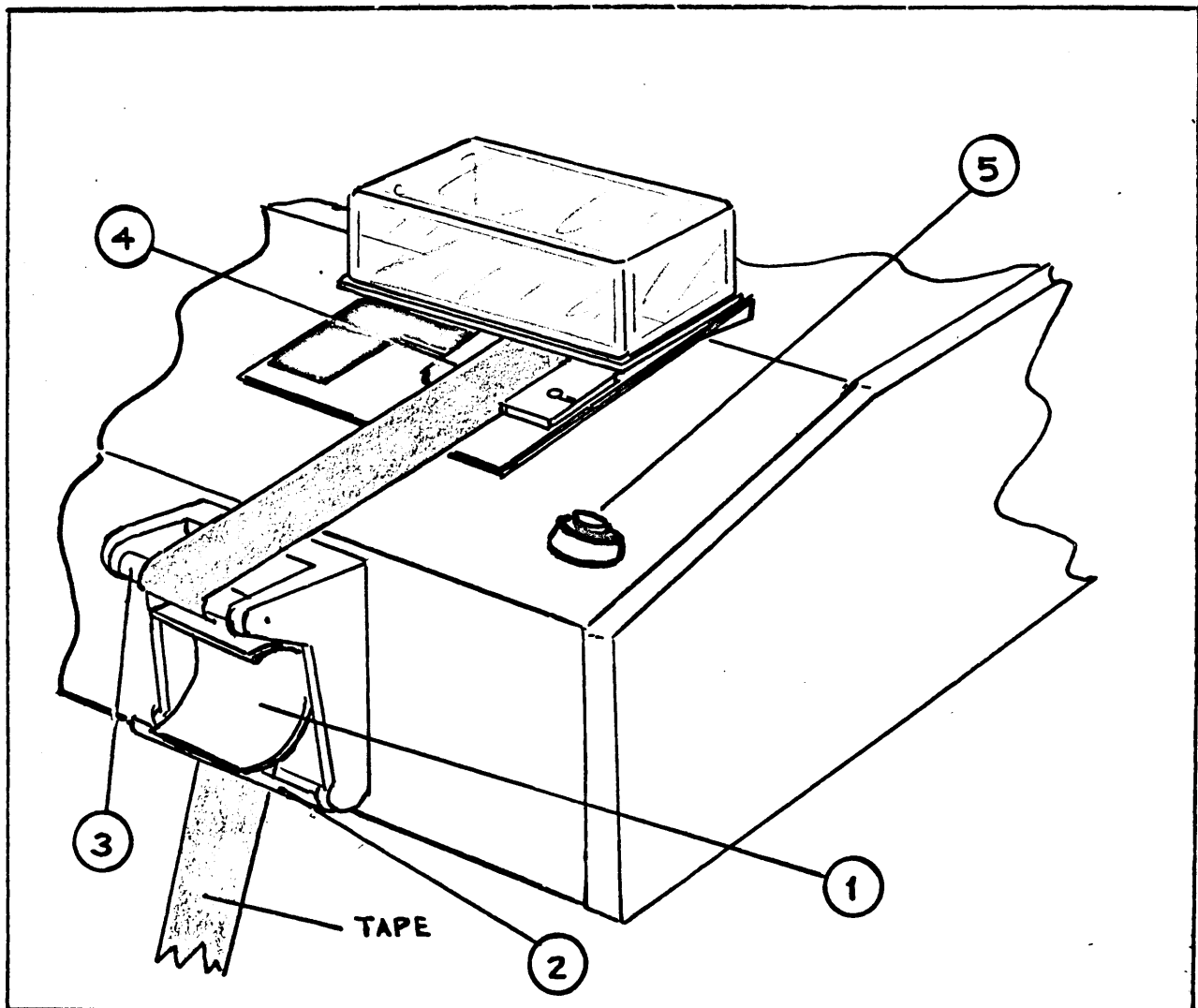


Figure C

TAPE PUNCH OPERATING PROCEDURE

CARD PUNCH - See figure D.

1. Pull tape tension switch lever (1) out.
2. Position card so that the left edge is guided by the tape reader deck as shown in figure D.
3. Slide card under the metal tape guide (2) .
4. Push tape tension switch lever (1) in.
5. Push card forward and press tape feed pushbutton (3) for tape punch activation.

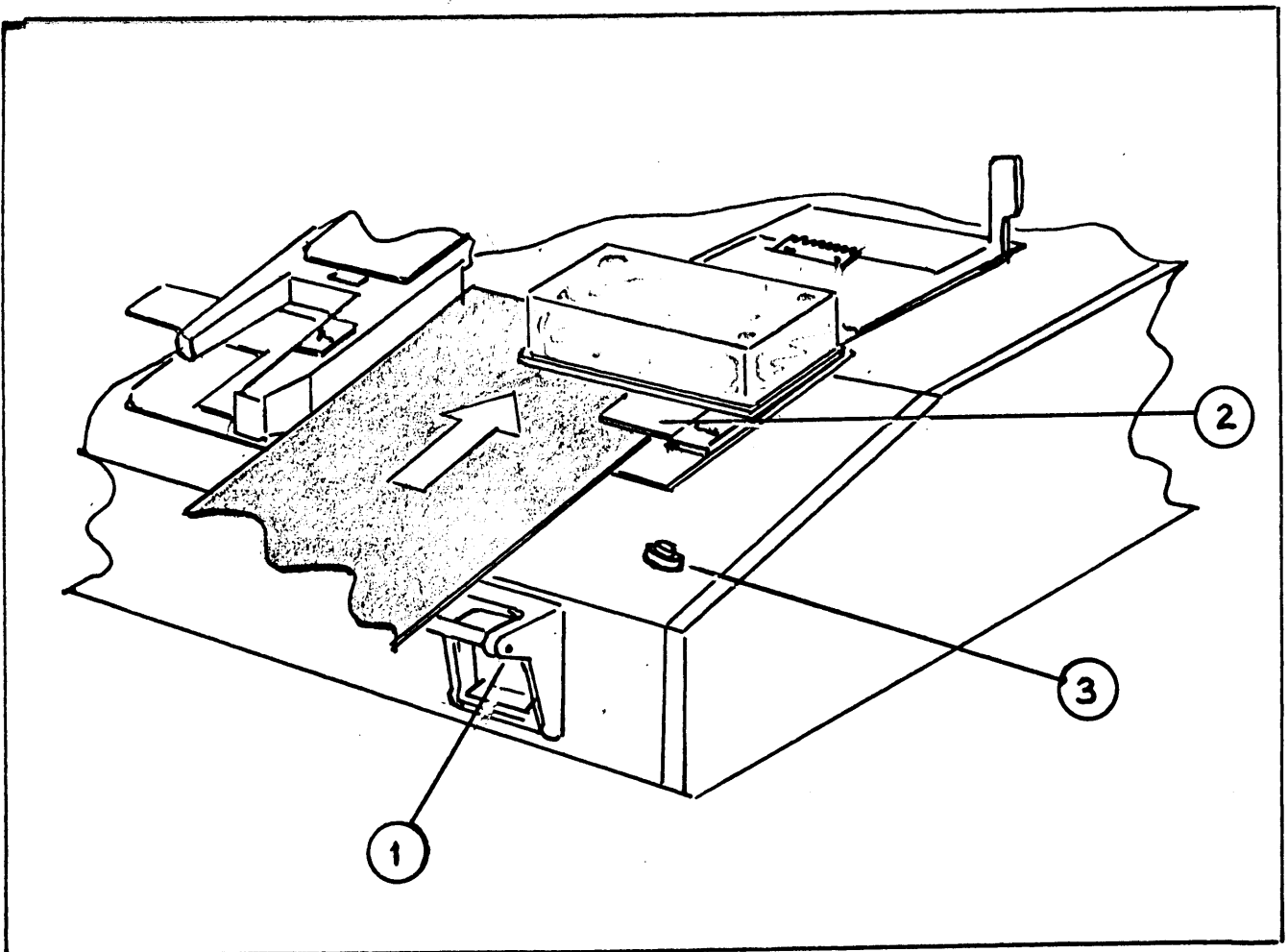


Figure D