

M A T E R I A L   L I S T

MODEL

SW-210

1. ELECTRICAL COMPONENTS AND MECHANICAL PARTS
2. HARDWARE
3. SPECIFICATIONS
4. SUPPORTING DRAWINGS
5. MATING PARTS
6. LOOSE ITEMS

CHECKED \_\_\_\_\_

APPROVED \_\_\_\_\_

TYPED JULY 7, 1959

R.F. SWITCH

PURCHASED ITEM	MATERIAL LIST		MODEL SW-210		PROJ. NO.										LIST NO. ML-SW-210	
	QUANTITY REQ.	PART NO.	REV	DWG SIZE	DESCRIPTION	REF	SYMBOLS									
					<u>ELECTRICAL COMPONENTS AND MECHANICAL PARTS</u>											
P	1	BX-			Can and Cover											
P	1	JJ-162	A	1	Connector, Receptacle, Switch Type											
P	1	MS-1769		1	Strap, Flexible Connector											
P	1	NP-224		1	Nameplate, TMC (Foil Cal)											
P	1	NP-225-		1	Nameplate, Schematic Diagram (Foil Cal)											
P	2	UG-560/U		1	Connector, Receptacle											
					<u>HARDWARE</u>											
	1	LWE75LRL		1	Lockwasher, External Tooth											
	1	NT-125			Nut, Knurled Mounting											
					<u>SPECIFICATIONS</u>											
		S-114			Zinc Chromate Primer											
		S-115			Smooth Grey Enamel, TMC											
					<u>SUPPORTING DRAWINGS</u>											
	1	SW-210			Final Assembly, Switch, R.F.											
	1	CK-			Schematic Diagram											

3 of 4

R.F. SWITCH

PURCHASED ITEM	MATERIAL LIST			MODEL	PROJ. NO.										LIST NO.							
	QUANTITY REQ.	PART NO.	REV	DWG SIZE	DESCRIPTION	REF	SYMBOLS	ISSUE											SHEET	OF	SHEETS	
P	1	PL-149		1	Connector, Plug														2	OF	2	SHEETS
					<u>MATING PARTS</u>																	
P	1	TG-100		1	Tag, Warning for QDS Type Jacks																	
					<u>LOOSE ITEMS</u>																	

4 of 4

DATE: 2/1/58

JOB NO. E 1021 D

ISSUED FOR THE PURPOSE OF:

RF Switching Jack SW-210

- 1. A switching jack assembly shall be designed and drawn which will permit the patching of one JJ-150 to two U-560/U's.
- 2. The transient form SW-210 calls for a U-560/U, however, the Amphinol 82-836 may more satisfactorily fit our physical and production requirements.
- 3. Bill of material shall include one PI-149. *Loose item*

SCHEDULE:

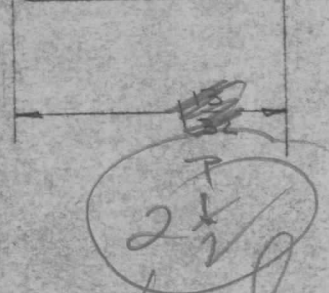
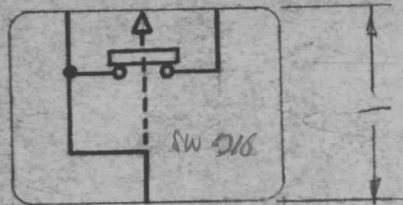
- 1. Sketches and rough bill of material should be submitted to production in less than one week.
- 2. ~~Drawings should be finalized by drafting within~~  
*one month.* ASS

DIST: R. H. deP  
 J. E. G.  
 A. J. J. (3)

*Completed 2/5*  
*Submitted 2/7/58*  
*Rjm*

REQ. PER UNIT	USED ON		
	MODEL	ASS'Y. NO.	DATE
1	SW-195	A-1433	6-24-57
1	SW-196	A-1498	1-24-58
1	SW-210	2-1209	
1	SW-211	2-1211	

LD-346



*Same as SW 206*  
*Create Decal*

Ref - CK-344

REQ. ITEM							PART NO.		DESCRIPTION		SYMBOL		
									THE TECHNICAL MATERIEL CORP.				
									MAMARONECK. NEW YORK				
							STOCK SIZE		STAMP, SCHEMATIC,				
							RUBBER		RUBBER				
							STAMP						
							MATERIAL						
ISSUE	ITEM	CHANGED FROM	DATE	CH. NO.	DRAFTS	CHECKER	ENG. APP.						
TOLERANCES			SCALE:				TYPE & TEMPER		HEAT TREAT. SPEC.	DRAWN	CHECKED	FINAL APPROVAL	
DEC. DIM. ±			MAXIMUM ALLOWABLE TOLERANCES HAVE BEEN DETERMINED AND ANY DEVIATIONS WILL BE CAUSE FOR REJECTION. REMOVE ALL BURRS AND SHARP EDGES									LD-346	
FRAC. DIM. ±							FINISH & SPEC. NO.		ELEC. DES. APP.	MECH. DES. APP.			
ANGULAR DIM. ±													